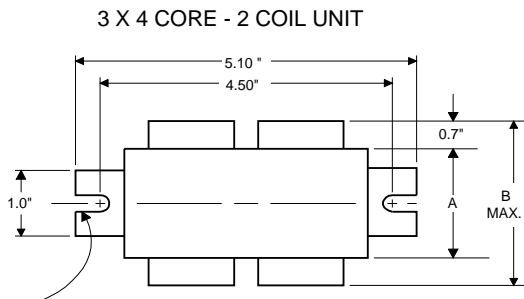


**PHILIPS  
ADVANCE**

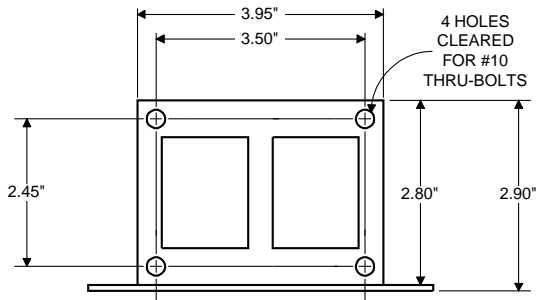
**Metal  
Halide  
Lamp Ballast**

**Catalog Number 71A5390  
For 100W M90/M140  
60 Hz HX-HPF  
Status: Active**

**DIMENSIONS AND DATA**

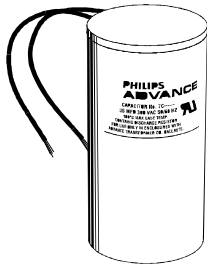


0.25" WIDE  
2 SLOTS



	120	208	240	277
INPUT VOLTS				
CIRCUIT TYPE	HX-HPF			
POWER FACTOR (min)	90%			
REGULATION				
Line Volts	±5%			
Lamp Watts	±12%			
LINE CURRENT (Amps)				
Operating.....	1.15	0.66	0.58	0.50
Open Circuit.....	2.30	1.40	1.15	1.00
Starting.....	1.20	0.80	0.65	0.60
UL TEMPERATURE RATINGS	H(180°C)			
Insulation Class	1029			
Coil Temperature Code	B	C	A	A
MIN. AMBIENT STARTING TEMP.	-20°F or -30°C			
NOM. OPEN CIRCUIT VOLTAGE	265			
INPUT VOLTAGE AT LAMP DROPOUT.....	90	156	180	208
INPUT WATTS	129			
RECOMMENDED FUSE (Amps).....	6	4	3	3
CORE and COIL				
Dimension (A)	1.50			
Dimension (B)	2.80			
Weight (lbs.)	5.5			
Lead Lengths	12"			
CAPACITOR REQUIREMENT				
Microfarads	12.0			
Volts (min.)	280			
Fault Current Withstand (amps)				
60 Hz TEST PROCEDURES (Refer to Philips Lighting Electronics N.A. TEST Procedure for HID Ballasts - Form 127 High Potential Test (Volts)				
1 minute	2000			
2 seconds	2500			
Open Circuit Voltage Test (Volts)	240-300			
Short-Circuit Current Test (Amps)	1.35-1.70			
Secondary Current				
Input Current.....	1.00-1.50	0.60-0.90	0.50-0.75	0.40-0.65

Capacitor: 7C120M30RA



Capacitance: 12  
Dia/Oval Dim: 1.65  
Height: 2.75  
Temp Rating: 105°C



Wiring Diagram:

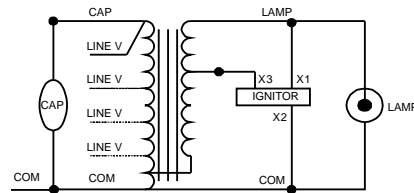


Fig. K

Ignitor: LI533-H4



Red (X1)  
White (X2)  
Blue (X3)

Ballast to Lamp Distance  
(BTL) = 20 feet  
Temp Rating: 105°C

**Typical Ordering Information**

(please call Philips Lighting Electronics N.A. for suffix availability)

Order Suffix	Description
--------------	-------------

Data is based upon tests performed by Philips Lighting Electronics N.A. in a controlled environment and is representative of relative performance. Actual performance can vary depending on operating conditions. Specifications are subject to change without notice.

**PHILIPS LIGHTING ELECTRONICS N.A.**

10275 WEST HIGGINS ROAD · ROSEMONT, IL 60018

Tel: 800-322-2086 · Fax: 888-423-1882 · www.philips.com/advance

Customer Support/Technical Service: 800-372-3331 · OEM Support: 866-915-5886

Revised: 10/10/07