

# appeal

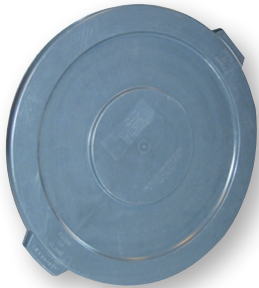
## Appeal Plastics



### Round Waste Containers

The Appeal round waste containers feature all plastic, heavy duty construction that will not chip, peel, or rust. Open grab handles provide secure mobility in lifting, moving, and handling receptacles. Containers nest together for minimal space requirements during storage. Optional snap-down lids provide security while helping to lock out air, rain and moisture. Made of FDA approved material.

Item #	USN #	Description	Size	Color	Case Pack
APP15503	100971	20 gal. Round Waste Container	20 gal.	Gray	6/CS
APP15504	100972	32 gal. Round Waste Container	32 gal.	Gray	4/CS
APP15505	100973	44 gal. Round Waste Container	44 gal.	Gray	3/CS
APP15506	100974	55 gal. Round Waste Container	55 gal.	Gray	2/CS



### Round Lids

Appeal snap-down lids provide security while helping to lock out air, rain and moisture from Appeal round waste containers. Made of FDA approved material.

Item #	USN #	Description	Size	Color	Case Pack
APP15507	100975	20 gal. Round Waste Container Lid	20 gal.	Gray	6/CS
APP15508	100976	32 gal. Round Waste Container Lid	32 gal.	Gray	4/CS
APP15509	100977	44 gal. Round Waste Container Lid	44 gal.	Gray	3/CS
APP15510	100978	55 gal. Round Waste Container Lid	55 gal.	Gray	2/CS



### Round Container Dolly

The Appeal round container dolly provides great mobility for heavy waste containers. Non-marking 3" swivel casters provide excellent maneuverability. Dolly attaches to Appeal round waste containers from 20 to 55 gallons. Fits most other similar round waste receptacles on the market.

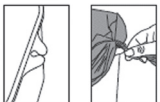
Item #	USN #	Description	Color	Case Pack
APP15502	100970	Round Container Dolly	Black	2/CS



### Wastebaskets

Appeal soft-sided plastic rectangular wastebaskets are molded of high quality polyethylene for strength and durability. The seamless construction will not dent, leak or rust. The new design features a Pinch'm<sup>®</sup> poly bag clip to securely hold poly liners in place, preventing liners from falling inside the receptacle. Rolled outer rim makes handling the receptacles safe and easy.

Item #	USN #	Description	Size	Height	Color	Case Pack
APP15511	100979	14 qt. Small Wastebasket	14 qt.	12"	Gray	12/CS
APP15512	100980	14 qt. Small Wastebasket	14 qt.	12"	Black	12/CS
APP15513	100981	28 qt. Medium Wastebasket	28 qt.	15"	Gray	12/CS
APP15514	100982	28 qt. Medium Wastebasket	28 qt.	15"	Black	12/CS
APP15515	100983	41 qt. Large Wastebasket	41 qt.	20"	Gray	12/CS
APP15516	100984	41 qt. Large Wastebasket	41 qt.	20"	Black	12/CS



NEW! Pinch'm<sup>™</sup> bag pinches keep your liner where you want!



## Trimline™ Receptacles

The Appeal Trimline™ receptacle features heavy duty plastic construction with smooth surfaces for ease of cleaning. This container fits neatly beside work tables or in narrow spaces. Exterior corner tabs help keep trash liners secure and in place. Helper handles on the sides makes lifting and dumping easier. Made of FDA approved material.

Item #	USN #	Description	Size	Color	Case Pack
APP15517	100985	23 gal. Trimline™ Can	23 gal.	Gray	4/CS
APP15518	100986	23 gal. Trimline™ Can	23 gal.	Beige	4/CS



## Upright Lobby Dust Pans

The Appeal upright lobby dust pan features a pivoting bucket that locks open for easy, touch-free disposal of contents. Rubber edge on front of bucket assures good contact with floor for picking up fine particles and larger debris. Durable PVC handle is lightweight for reduced worker fatigue. For use on hard or carpeted floor surfaces. Self opening and closing lid model conceals unpleasant dirt and debris.

Item #	USN #	Description	Type	Color	Case Pack
APP18108	881749	Upright Lobby Dust Pan	With Lid	Black	10/CS
APP18109	881750	Upright Lobby Dust Pan	Without Lid	Black	10/CS



## Heavy Duty Plastic Dust Pan

The Appeal heavy duty plastic dust pan features a large 12" wide opening for holding large quantities of dirt and debris. Molded ridges in the back of the pan facilitate broom and brush cleaning, leaving the dust in the pan instead of next to it. Fine front edge for maximum contact with the floor surface. Slot in handle for easy storage hang-up.

Item #	USN #	Description	Size	Color	Case Pack
APP18110	881751	Heavy Duty Plastic Dust Pan	12"	Black	24/CS



## Sanitary Napkin Receptacle

The Appeal sanitary napkin receptacle is a durable, wall-mounted white receptacle with a removable rigid liner for quick and easy clean-ups. Optional disposable waxed bags are also available. Tight fitting lid helps keep odors contained.

Item #	USN #	Description	Color	Case Pack
APP18107	881748	Sanitary Napkin Receptacle	White	12/CS



## Mop Bucket/Wringer Combos

The Appeal 35 qt. capacity bucket provides a large target area for less mess when wringing mops. Both the bucket and wringer have smooth surfaces for ease of cleaning. Large capacity wringers accommodate 12-32 oz. The down-press wringer model provides increased wringing strength for dryer mops.

Item #	USN #	Description	Type	Color	Case Pack
APP15500	881017	Side Press Mop Bucket & Wringer Combo	Side Press	Yellow	1/CS
APP15501	881018	Down Press Mop Bucket & Wringer Combo	Down Press	Yellow	1/CS

For a complete listing of Appeal products go to:

[AppealProducts.com](http://AppealProducts.com)