

.....*HUBBARD ENTERPRISES*.....

HOLDRITE[®]

“Converting Makeshift Methods into Engineered Solutions”SM

GENERAL PRODUCT CATALOG



TABLE OF CONTENTS

CONTENT	PAGE
Company Overview.....	2
“Converting Makeshift Methods into Engineered Solutions” SM	3
“VIP Value-Added Services”.....	4
PEX Tubing Solutions.....	5-10
CPVC Tubing Solutions.....	11-13
Copper Tubing Solutions - Residential/Commercial.....	14-16
Pre-Fab/Specialty Solutions.....	17-19
Overhead Support Solutions.....	20-23
Telescoping Support Solutions.....	24-26
Acoustical Solutions.....	27-30
Inserts, Isolators, Clamps.....	31-34
Water Heater and Equipment Supports.....	35-37
“Quick Search by Application”.....	38-44
Material Take-Off Sheet & Product Index.....	45-47
Distribution and Shipping.....	48

Hubbard Enterprises/HOLDRITE®
2560 Progress Street
Vista, CA 92081
(800) 321-0316

© 2009 Hubbard Enterprises/HOLDRITE. All rights reserved.
Products shown may be protected by U.S. Patent or have Patents Pending.



COMPANY OVERVIEW

Since the introduction of the first HOLDRITE® Copper-bonded™ bracket over 27 years ago, Hubbard Enterprises/HOLDRITE® has become a leading manufacturer known for innovative products and services that help Mechanical and Plumbing Contractors reduce their installation costs, while ensuring consistent craftsmanship. By understanding both the large project perspective and specific application requirements, HOLDRITE has developed solutions that assist in establishing a “shop standard” for both residential and commercial Contractors. Over the years, Contractors have made HOLDRITE the plumbing industry standard for “Converting Makeshift Methods into Engineered Solutions”™. HOLDRITE products have been installed into a wide variety of projects from single-family and multi-family housing to hotels/motels, healthcare, institutions, and many other market sectors.

The construction industry has seen fluctuating material costs and challenging market conditions, resulting in Contractors looking to reduce their overall installation costs to stay competitive and grow their market share. This has significantly influenced changes in material type preferences and installation methodologies. Hubbard Enterprises/HOLDRITE continues to listen to the Contractor, Wholesaler, and Engineer to develop innovative products that support Copper, PEX, CPVC tubing, and other material types. Additionally, HOLDRITE is an industry leader in such categories as noise and vibration isolation and water heater support.

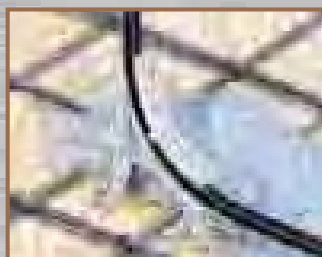
HOLDRITE also offers value-added, No Cost Services to the Contractor, Wholesaler, and Engineer to assist with multiple stages in the project. VIP Services include specification and submittal assistance, 3-D product drawings, custom detail application pages, and material “take-off” assistance to help a Contractor or Wholesaler plan for product inventory levels.

As the plumbing industry continues to evolve, Hubbard Enterprises/HOLDRITE will also stay at the forefront of new trends that will make a significant impact to the Mechanical and Plumbing Contractor.

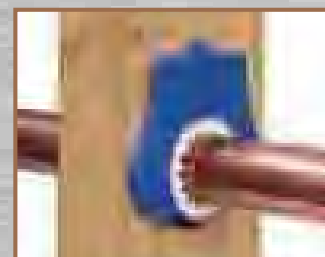
Innovative and proven products named as “Top Products” by Contractors and leading industry trade publications. Examples include:



QUICK STAND™
Wall Mount Platform (pg. 36)



PEXRITE® System (pg. 5)



HOLDRITE® Silencer™
System (pg. 27)

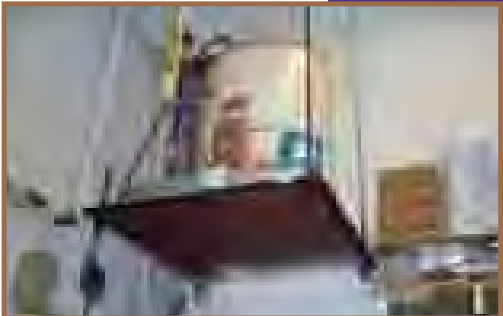
MAKESHIFT METHODS

ENGINEERED SOLUTIONS

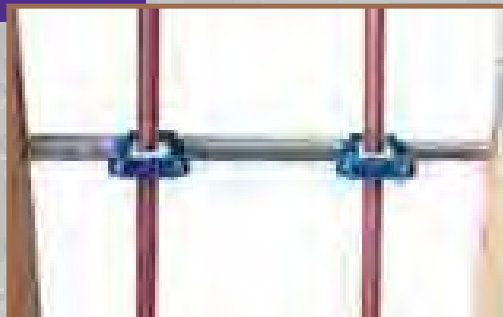
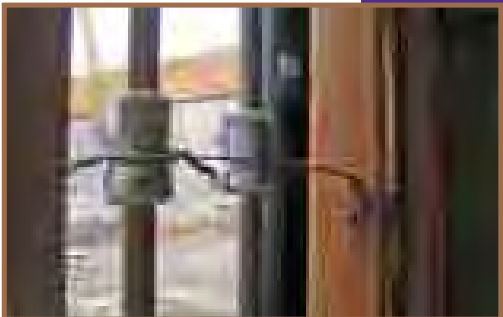
LAVATORY / SINK



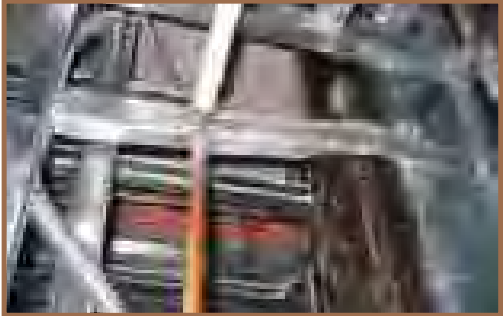
WATER HEATER SUPPORT



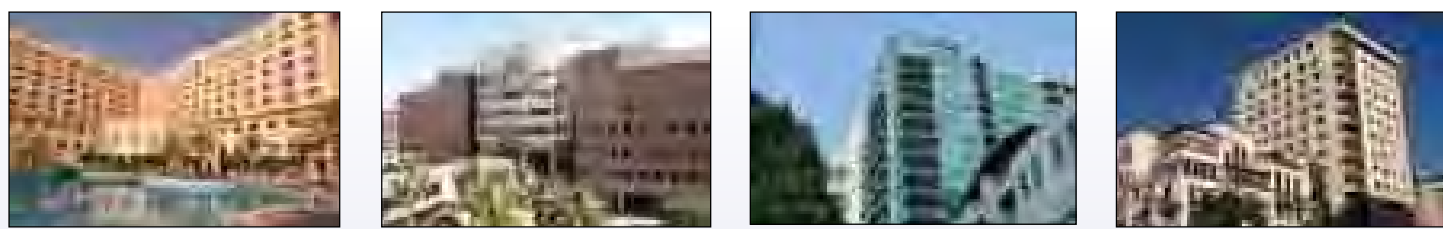
VERTICAL



SHOWER HEAD



VIP Estimating Cost Savings Analysis



- No Cost material "Take-Off" for your next job
- Performed by Estimators with over 20 years of plumbing experience
- Savings analysis based on material and installation costs resulting from using HOLDRITE® products
- Custom "Detailed Drawing" pages for each application in PDF or DWG CAD formats
- 3-D Product drawings available in 5 formats!
- Ideal for establishing "Shop Standards"
- Specification and Submittal assistance

HOLDRITE APPLICATION SAVINGS EXAMPLES

Application	Holdrite Product(s)	"Installed Cost" Savings <small>Examples Shown @ \$40.00/Hr. Labor Rate</small>
Overhead Cast-In-Place Hanger	125-D	\$7.40 (Double Pipe Run)
Suspended Equipment Platform	40-SWHP-A	\$8.33
Lavatory Sink (PEX-to-Copper Stub Out)	103-18/701	\$1.86
Flush Valve Support	114-CO	\$1.18
Overhead Med-Gas Trapeze	EZ-1/250	\$16.90

LABOR COST CALCULATOR

		Time Spent									
		1	2	3	4	5	6	7	8	9	10
		Min.	Min.	Min.	Min.	Min.	Min.	Min.	Min.	Min.	Min.
TOTAL COST PER HOUR (\$) <small>(Wage + Over + Benefits + Taxes)</small>	\$10.00	\$0.17	\$0.33	\$0.50	\$0.67	\$0.83	\$1.00	\$1.17	\$1.33	\$1.50	\$1.67
	\$15.00	\$0.25	\$0.50	\$0.75	\$1.00	\$1.25	\$1.50	\$1.75	\$2.00	\$2.25	\$2.50
	\$20.00	\$0.33	\$0.67	\$1.00	\$1.33	\$1.67	\$2.00	\$2.33	\$2.67	\$3.00	\$3.33
	\$25.00	\$0.42	\$0.83	\$1.25	\$1.67	\$2.08	\$2.50	\$2.92	\$3.33	\$3.75	\$4.17
	\$30.00	\$0.50	\$1.00	\$1.50	\$2.00	\$2.50	\$3.00	\$3.50	\$4.00	\$4.50	\$5.00
	\$35.00	\$0.58	\$1.17	\$1.75	\$2.33	\$2.92	\$3.50	\$4.08	\$4.66	\$5.25	\$5.83
	\$40.00	\$0.67	\$1.33	\$2.00	\$2.67	\$3.33	\$4.00	\$4.66	\$5.33	\$6.00	\$6.66
	\$45.00	\$0.75	\$1.50	\$2.25	\$3.00	\$3.75	\$4.50	\$5.25	\$6.00	\$6.75	\$7.50
	\$50.00	\$0.83	\$1.67	\$2.50	\$3.33	\$4.17	\$5.00	\$5.83	\$6.66	\$7.50	\$8.33
	\$55.00	\$0.92	\$1.83	\$2.75	\$3.67	\$4.58	\$5.50	\$6.41	\$7.33	\$8.25	\$9.16
	\$60.00	\$1.00	\$2.00	\$3.00	\$4.00	\$5.00	\$6.00	\$7.00	\$8.00	\$9.00	\$10.00
\$65.00	\$1.08	\$2.17	\$3.25	\$4.33	\$5.41	\$6.50	\$7.58	\$8.66	\$9.75	\$10.83	
\$70.00	\$1.17	\$2.33	\$3.50	\$4.66	\$5.83	\$7.00	\$8.16	\$9.33	\$10.50	\$11.66	
\$75.00	\$1.25	\$2.50	\$3.75	\$5.00	\$6.25	\$7.50	\$8.75	\$10.00	\$11.25	\$12.50	
\$80.00	\$1.33	\$2.67	\$4.00	\$5.33	\$6.66	\$8.00	\$9.33	\$10.66	\$12.00	\$13.33	
\$85.00	\$1.42	\$2.83	\$4.25	\$5.66	\$7.08	\$8.50	\$9.91	\$11.33	\$12.74	\$14.16	
\$90.00	\$1.50	\$3.00	\$4.50	\$6.00	\$7.50	\$9.00	\$10.50	\$12.00	\$13.49	\$14.99	
\$95.00	\$1.58	\$3.17	\$4.75	\$6.33	\$7.91	\$9.50	\$11.08	\$12.66	\$14.24	\$15.83	
\$100.00	\$1.67	\$3.33	\$5.00	\$6.66	\$8.33	\$10.00	\$11.66	\$13.33	\$14.99	\$16.66	

PEX

Support and Alignment Solutions

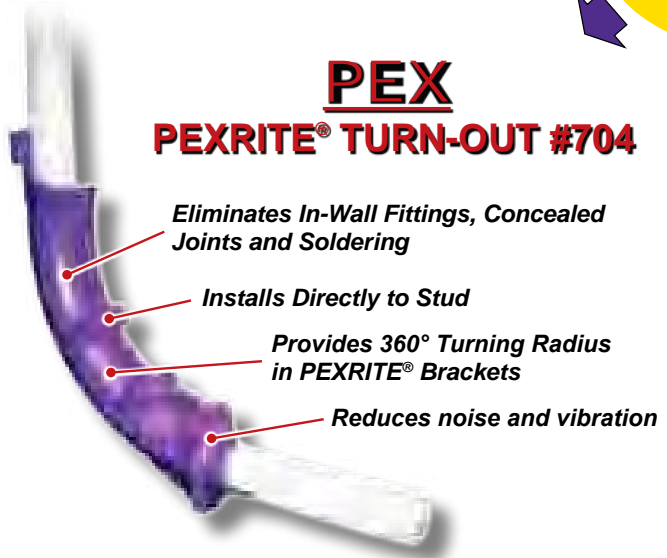


- **Minimizes Concealed Joints**
- **Reduces In-Wall Fittings**
- **Flame-Free Environment at Stub-Out Location**
- **Compatible with All PEX Manufacturers**

PEXRITE®

**Pick Your
Stub-Out
Method**

PEX **PEXRITE® TURN-OUT #704**



- Eliminates In-Wall Fittings, Concealed Joints and Soldering*
- Installs Directly to Stud*
- Provides 360° Turning Radius in PEXRITE® Brackets*
- Reduces noise and vibration*

COPPER **PEXRITE® LOCK-N-LOAD™ #701**



- Designed for PEX, Copper and CPVC*
- Tightens by Hand - No tools or hardware required*
- Eliminates Soldering*
- Secure fit prevents forward and backward movement*

#103-18

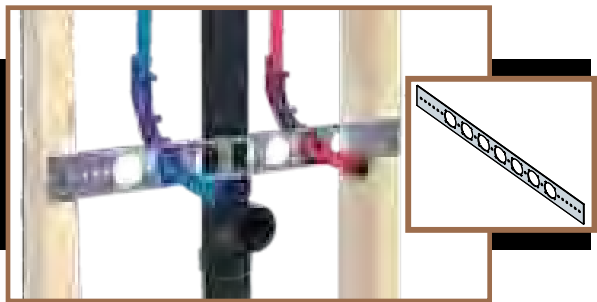


PEXRITE TURN-OUT #704 INSTALLATION INSTRUCTIONS

1 Install PEXRITE® bracket to studs	2 Insert 704 into bracket from the front
3 Position 704 until bracket fits into groove, then rotate into place	4 Insert PEX tube at 45° angle and set stub-out length
5 Bend tube forward and snap into 704	6 No concealed joint in the wall

PEXRITE LOCK-N-LOAD #701 INSTALLATION INSTRUCTIONS

1 Install PEXRITE® bracket to studs	2 Insert 701 into bracket from front
3 Lock 701 into bracket with thumbs	4 Load tubing through 701 from back
5 Push and twist back nut by hand until tight	6 Secures stub-out with no solder



HOLDRITE – #103-18, #103-26

- Versatile bracket ideal for sink, lavatory & water closet plumbing solutions
- Galvanized steel bracket with 1-3/8" keyed holes on 2" centers
- Integrates with PEXRITE #701 & #704 with patented connection and other HOLDRITE inserts

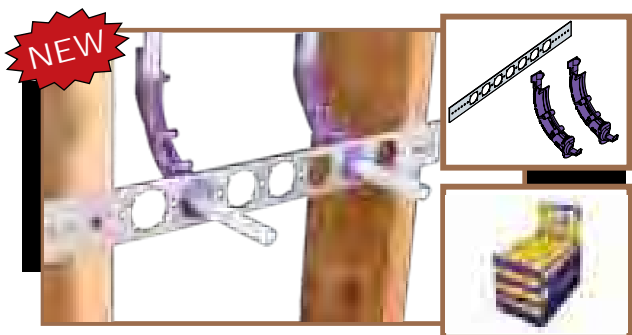
Model#	Bracket Size	For Pipe Size(s)	Box Qty
103-18	20"	1/2", 3/4", 1" CTS	50
103-26	26"	1/2", 3/4", 1" CTS	50



PEXRITE – #704

- PEX turnout integrates with #103, #110-R, and #709 series brackets
- Install directly to stud
- Reduces in-wall fittings and concealed joints
- Provides 360-degree turning radius
- Torch-free environment at stub-out location
- Eliminates the need for costly copper bullets
- Compatible with all PEX tubing manufacturers

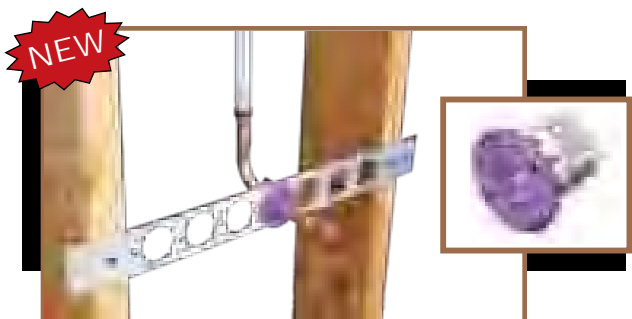
Model#	Size	For Pipe Size(s)	Box Qty
704	3-1/4" X 5-1/2"	3/8" - 1/2" CTS	100



PEXRITE – #704-PR KIT

- PEX stub-out kit for lavatory/sink or toilet
- Includes (1) #103-18 galvanized bracket and (2) #704 turn-outs
- Installation photos on packaging. Great for Counter Sales.
- Available in Contractor kit, 6PAK, and Wholesaler point-of-purchase (POP) display

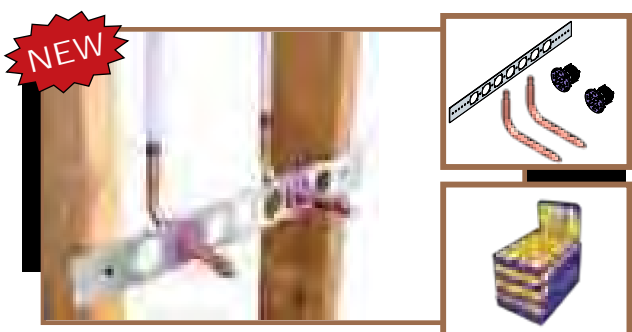
Model#	For Pipe Size(s)	Kit Qty	6PAK Qty	Case Qty
704-PR	3/8" - 1/2" CTS	1	6	36



HOLDRITE LOCK-N-LOAD™ – #701

- Stub-out clamp ideal for 1/2" CTS PEX-to-Copper transition at lavatory/sink or toilet
- Integrates with #103, #110-R, and #709 series brackets
- Compatible with PEX, Copper, and CPVC
- Tightens by hand - No tools required
- Eliminates soldering
- Secure fit prevents forward and backward movement

Model#	Size	For Pipe Size(s)	Box Qty
701	2" x 1-3/4"	1/2" CTS	50

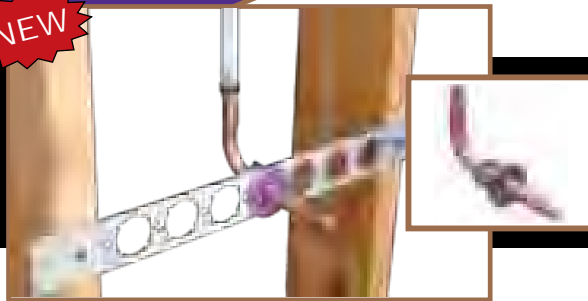


PEXRITE – #701-PR KIT

- PEX stub-out kit for lavatory/sink or toilet
- Includes (1) #103-18 galvanized bracket, (2) #701 stub-out clamps, and (2) 1/2" CTS 3.5" x 8" Copper Ells
- Installation photos on packaging. Great for Counter Sales.
- Available in Contractor kit, 6PAK, and Wholesaler point-of-purchase display
- Confirm compatibility of Copper Ells with PEX tubing manufacturer

Model#	For Pipe Size(s)	Kit Qty	6PAK Qty	Case Qty
701-PR	1/2" CTS	1	6	36

NEW



PEXRITE – #701-0536P, #701-0538P

- Stub-out clamp and Copper Ell in bulk packaging
- #701-0536P includes 1/2" CTS #701 stub-out clamp and 1/2" CTS 3.5" x 6" Copper Ell
- #701-0538P includes 1/2" CTS #701 stub-out clamp and 1/2" CTS 3.5" x 8" Copper Ell

Model#	Copper Ell Size	For Pipe Size(s)	Box Qty
701-0536P	1/2" CTS 3.5" x 6"	1/2" CTS PEX tubing	25 Clamps/ 25 Copper Ells
701-0538P	1/2" CTS 3.5" x 8"	1/2" CTS PEX tubing	25 Clamps/ 25 Copper Ells

NEW



HOLDRITE – #103-18-701, #103-26-701

- Ideal for lavatory/sink and toilet
- Sold in bulk packaging
- #103-18-701 includes 20" brackets and 1/2" CTS #701 stub-out clamps
- #103-26-701 includes 26" brackets and 1/2" CTS #701 stub-out clamps

Model#	Size	For Pipe Size(s)	Box Qty
103-18-701	20" Bracket	1/2" CTS	50 Brackets/100 Clamps
103-26-701	26" Bracket	1/2" CTS	50 Brackets/100 Clamps



HOLDRITE – #110-R

- Ideal for lavatory/island sink
- Galvanized steel bracket with "key design" allows integration with various HOLDRITE inserts, #701, and #704
- Allows for easy Pre-fabrication at the shop or in the field
- Install directly to the waste/vent pipe prior to studs being erected
- Supports 4" and 8" centers
- Self-locking stainless steel band & isolating felt included

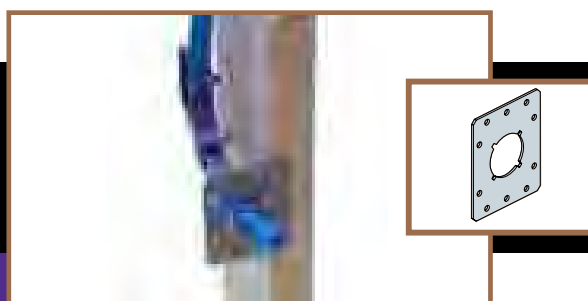
Model#	Bracket Size	For Pipe Size(s)	Box Qty
110-R	2-1/8" X 1-7/8"	1/2", 3/4", 1" CTS	50



HOLDRITE – #709, #709-L, #709-EXT

- Ideal for water closets and hose bibs
- Galvanized steel brackets with 1-3/8" keyed holes
- Allows for 360-degree orientation when used with #701/#704
- #709 provides 4-1/4" and 6-1/4" center line heights
- #709-L provides 1-3/8" and 3-3/8" center line off stud/plate (3" & 5" off floor)
- #709-EXT provides 2", 4", 6", and 8" center line off plate or floor

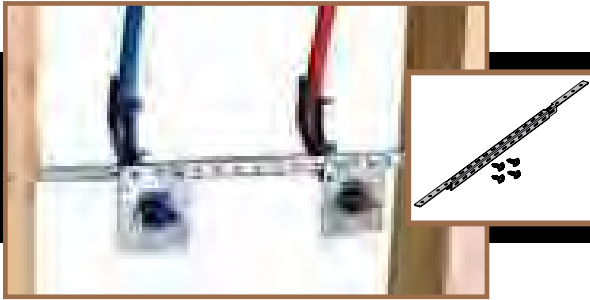
Model#	Bracket Size	For Pipe Size(s)	Box Qty
709	7-1/2" X 2"	3/8" - 1" CTS	50
709-L	4-1/4" X 3-1/4" X 2"	3/8" - 1" CTS	50
709-EXT	9" X 2-1/8" X 2"	3/8" - 1" CTS	50



HOLDRITE – #721

- Attaches to framing or directly to HOLDRITE Stout Bracket®
- Ideal for lavatory or water closet support
- Galvanized steel bracket with 1-3/8" keyed hole
- Allows for 360-degree orientation when used with #701/#704

Model#	Bracket Size	For Pipe Size(s)	Box Qty
721	2-3/4" X 3-3/8"	3/8" - 1" CTS	50



HOLDRITE STOUT BRACKET® – #SB1S, #SB2S

- Multi-purpose galvanized bracket supports various application solutions
- Ideal for lavatory, shower, water closet, vertical, horizontal and much more
- Telescoping design supports PEX, Copper, CPVC, and other types of piping
- Numerous components integrate into multiple sides of the Stout Bracket
- Provides superior strength and versatility
- Includes four screws

Model#	Bracket Size	For Pipe Size(s)	Box Qty
SB1S	10" to 18"	Various	50
SB2S	13" to 25"	Various	50



HOLDRITE – #101-18-R, #101-26-R

- Ideal for lavatory, water closet, and tub spout support
- Extruded holes provide additional soldering surface
- Ideal for PEX-to-Copper bullets
- Copper-bonded steel bracket
- #101-18-R provides 5/8" holes on 2" centers
- #101-26-R provides 5/8" holes on 2" centers and two 7/8" holes on 8" centers

Model#	Bracket Size	For Pipe Size(s)	Box Qty
101-18-R	20"	1/2" CTS	25
101-26-R	26"	1/2" CTS	25

NEW

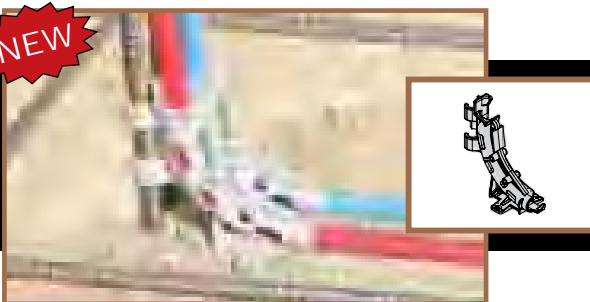


PEXRITE – #705

- Turn-out support for 3/8" and 1/2" CTS PEX tubing
- Ideal for lavatory/sink & toilet stub-out and overhead 90° turn
- Mount to block of wood or other flat surface
- Unique design allows for side-entry of tubing

Model#	Size	For Pipe Size(s)	Box Qty
705	5-1/3" x 4-1/8" x 2-1/2"	3/8" & 1/2" CTS	50

NEW



PEXRITE POP-UP™ – #706

- Single run PEXRITE POP-UP for RADIANT HEATING or other in-slab PEX tubing support (1-1/2" - 3-1/2" thick slab)
- Unique design allows for side-entry of tubing
- Mounts to form decking or slab-on-grade with rebar
- Manifold capability with interlocking feet

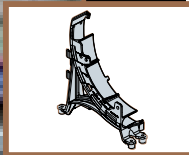
Model#	Size	For Pipe Size(s)	Box Qty
706	5-1/3" x 5" x 2-1/2"	3/8" & 1/2" CTS	50



PEXRITE POP-UP™ – #707, #707-E

- Single run PEXRITE POP-UP for in-slab flexible tubing support
- Manifold capability with interlocking feet
- Compatible with PEX, soft Copper, flexible conduit
- #707 design allows for side-entry of tubing
- #707-E design allows for easy zip tie installation
- Mounts to form decking or slab-on-grade with rebar

Model#	Size	For Pipe Size(s)	Box Qty
707	8-1/2" X 8-5/8" X 1-1/4"	3/8" thru 7/8" O.D.	25
707-E	8-1/2" X 8-5/8" X 1-1/4"	3/8" thru 1-1/2" O.D.	25



PEXRITE POP-UP™ – #708

- Double run PEXRITE POP-UP for in-slab flexible tubing support
- Manifold capability with interlocking feet
- Compatible with PEX, soft Copper, flexible conduit
- Unique design allows for side-entry of tubing
- Mounts to form decking or slab-on-grade with rebar



Model#	Size	For Pipe Size(s)	Box Qty
708	10-1/2" X 11-1/8" X 2-1/2"	3/8" thru 1-1/8" O.D.	15

NEW

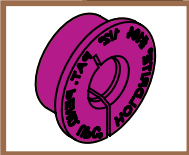


PEXRITE POP-UP™ – #708-E

- Double run PEXRITE POP-UP for in-slab PEX tubing, flexible conduit, & rigid conduit 90s.
- Unique design allows for easy zip tie installation
- Mounts to form decking or slab-on-grade with rebar
- Manifold capability with interlocking feet



Model#	Size	For Pipe Size(s)	Box Qty
708-E	10-1/2" x 11-1/6" x 3-1/4"	3/8" thru 2-1/2" IPS	15

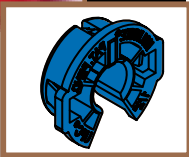


HOLDRITE INSERTS – #104 - #106

- Ideal for pipe support with HOLDRITE #121 & #103 series brackets
- Compatible with PEX, Copper, and CPVC tubing



Model#	Hole Needed	For Pipe Size(s)	Box Qty
104	1-3/8" Diameter	1/2" CTS	100
105	1-3/8" Diameter	3/4" CTS	100
106	1-3/8" Diameter	1" CTS	100



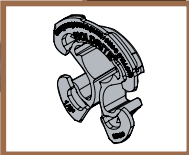
HOLDRITE INSERTS – #404-R - #406-R

- Ideal for metal studs with PEX, Copper, and CPVC tubing
- Integrates with most HOLDRITE galvanized brackets
- Flame-rated per UL 94 V-2 standards
- Fits in 1-3/8" or 1-11/32" holes



Model#	Hole Needed	For Pipe Size(s)	Box Qty
404-R	1-3/8" Diameter	1/2" CTS	100
405-R	1-3/8" Diameter	3/4" CTS	100
406-R	1-3/8" Diameter	1" CTS	100

NEW



HOLDRITE ISOLATORS – #424 - #426

- Ideal for metal thru-stud applications and integrates with HOLDRITE #121 and #125 series brackets
- Positioning and dissimilar metal isolation for Copper, CPVC, and PEX tubing
- Meets UL 94 HB requirements



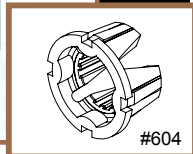
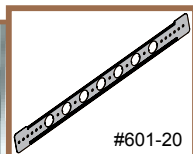
Model#	Hole Size	Pipe Size	Bag Qty	Master Carton Qty
424	1-11/32" & 1-3/8"	1/2" CTS	50	250
425	1-11/32" & 1-3/8"	3/4" CTS	50	250
426	1-11/32" & 1-3/8"	1" CTS	50	250

CPVC

Support and Alignment Solutions



- **LOCKRITE™ & HOLDRITE® Systems for CPVC Pipe Support**
- **Inserts are Lockable and Glueable**
- **Grooved Inserts Create Stronger Glue Joint**
- **Compatible with CPVC Tubing and Cements**
- **Some Application Solutions Require No Glue**

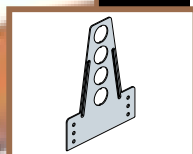


LOCKRITE – #601-20, #601-26, #604, #605

- Ideal for lavatory, sink, and water closet stub-out support
- Galvanized steel bracket provides proper pipe positioning and alignment
- Inserts are lockable and glueable
- Inserts are grooved, creating a stronger glue joint



Model#	Size	For Pipe Size(s)	Box Qty
601-20	20"	1/2", 3/4" CTS	50
601-26	26"	1/2", 3/4" CTS	50
604	1" Diameter	1/2" CTS	100
605	1" Diameter	3/4" CTS	100

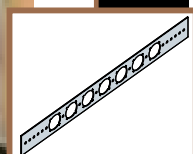


LOCKRITE – #609-N-6

- Ideal for water closet or hose bib stub-outs & functions as a nail plate
- Use in conjunction with #604 and #605 glueable inserts
- 16-gage galvanized steel bracket supports various heights from 2-1/4" – 6"



Model#	Bracket Size	For Pipe Size(s)	Box Qty
609-N-6	6-3/4" X 5"	1/2", 3/4" CTS	50



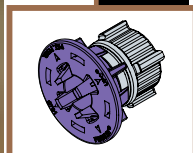
HOLDRITE – #103-18, #103-26

- Versatile bracket ideal for sink, lavatory & water closet plumbing solutions
- Galvanized steel bracket with 1-3/8" keyed holes on 2" centers
- Integrates with HOLDRITE #701 and other HOLDRITE inserts



Model#	Bracket Size	For Pipe Size(s)	Box Qty
103-18	20"	1/2", 3/4", 1" CTS	50
103-26	26"	1/2", 3/4", 1" CTS	50

NEW

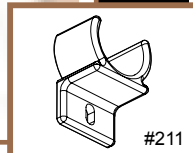
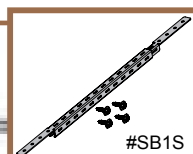


HOLDRITE LOCK-N-LOAD™ – #701

- Stub-out clamp ideal for lavatory/sink and toilet applications
- Integrates with #103, #110-R, and #709 series brackets
- Compatible with CPVC, PEX, and Copper
- Tightens by hand - No tools required
- Eliminates glue at the stub-out application
- Secure fit prevents forward and backward movement



Model#	Size	For Pipe Size(s)	Box Qty
701	2" x 1-3/4"	1/2" CTS	50



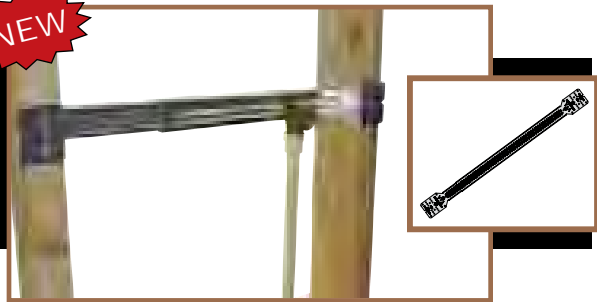
HOLDRITE STOUT BRACKET® – #SB1S, #SB2S, #211, #212

- Multi-purpose galvanized bracket supports various application solutions
- Ideal for lavatory, shower, water closet, vertical, horizontal and much more
- Telescoping design supports CPVC, PEX, Copper and other types of piping
- Numerous components integrate into multiple sides of the Stout Bracket
- Includes four screws
- CPVC tubing glues directly to clamp
- Meets UL 94 V-0 requirements



Model#	Size	For Pipe Size(s)	Box Qty
SB1S	10" to 18"	Various	50
SB2S	13" to 25"	Various	50
211	1" X 1-1/4"	1/2" CTS	100
212	1" X 1-3/8"	3/4" CTS	100

NEW



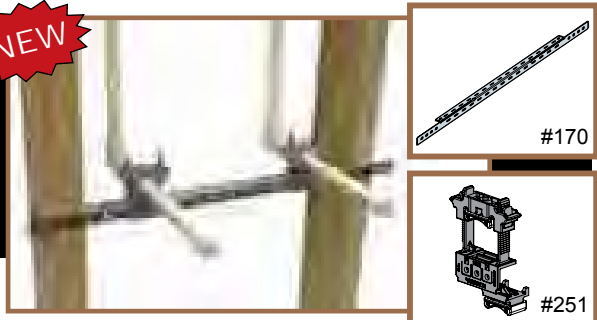
HOLDRITE STOUT BRACKET® –

#SB3, #SB4

- Ideal for shower head, tub spout, vertical mid-span, and much more
- Supports both 2-eared and 3-eared 90s
- Telescoping design supports CPVC, PEX, and Copper tubing
- Integrates with several HOLDRITE clamps and other industry standard components

Model#	Bracket Size	For Pipe Size(s)	Box Qty
SB3	10-1/4" to 17-1/2"	Various	50
SB4	15-1/4" to 25-1/2"	Various	50

NEW



HOLDRITE Rapid System™ –

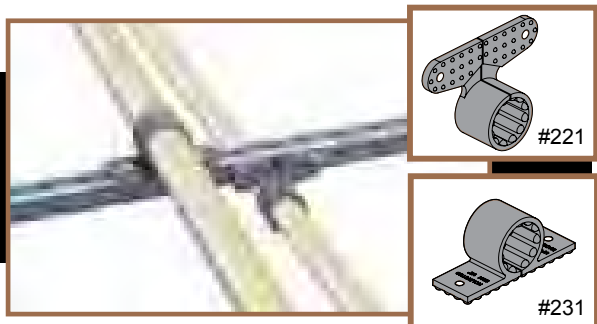
#170, #170-26, #251, #170-251, #170-26-251

- Low cost pipe support solution
- No tools or hardware required for clamp
- #170-251, #170-26-251 sold in bulk packaging

Model#	Size	For Pipe Size(s)	Box Qty
170	18" Bracket	Various	50
170-26	26" Bracket	Various	50
251	2-3/8" x 2-3/4"	1/2", 3/4", 1" CTS	50
170-251	18" Bracket	1/2", 3/4", 1" CTS	50 Brackets/100 Clamps
170-26-251	26" Bracket	1/2", 3/4", 1" CTS	50 Brackets/100 Clamps

HOLDRITE CLAMPS – #221 - #226, #231 - #236

- Ideal for CPVC, PEX, and Copper tubing
- #221 - #226 are suspension clamps
- #231 - #236 are standard clamps



Model#	Clamp Size	For Pipe Size(s)	Bag Qty
221	1-7/8" X 1-1/2"	1/2" CTS	100
222	1-7/8" X 1-3/4"	3/4" CTS	100
223	2-3/8" X 2-1/8"	1" CTS	50
224	2-7/8" X 2-3/8"	1-1/4" CTS	25
225	2-7/8" X 2-3/4"	1-1/2" CTS	25
226	3-3/8" X 3-1/8"	2" CTS	25
231	2" X 7/8"	1/2" CTS	100
232	2-3/8" X 2-1/8"	3/4" CTS	100
233	2-3/4" X 2-1/2"	1" CTS	50
234	2-3/4" X 1-3/4"	1-1/4" CTS	25
235	3-1/8" X 2"	1-1/2" CTS	25
236	3-1/2" X 2-1/2"	2" CTS	25

NEW



HOLDRITE ISOLATORS – #424 - #426, #424-C - #426-C

- Metal thru-stud applications & integrates with HOLDRITE #121/#125 brackets
- Positioning and dissimilar metal isolation for CPVC, PEX, and Copper tubing
- #424-#426 meets UL 94 HB requirements
- #424-C - #426-C are glueable with CPVC tubing

Model#	Hole Size	Pipe Size	Bag Qty	Master Carton Qty
424	1-11/32" & 1-3/8"	1/2" CTS	50	250
425	1-11/32" & 1-3/8"	3/4" CTS	50	250
426	1-11/32" & 1-3/8"	1" CTS	50	250
424-C	1-11/32" & 1-3/8"	1/2" CTS	50	250
425-C	1-11/32" & 1-3/8"	3/4" CTS	50	250
426-C	1-11/32" & 1-3/8"	1" CTS	50	250

COPPER-BONDED™ RESIDENTIAL/COMMERCIAL Support and Alignment Solutions



- Unique Copper Bonding Process
- Heat the Pipe Not the Bracket
- Solutions for Various Applications
- Support 1/2" to 1-1/4" CTS
- Designed for Stud Bays up to 24"

NEW



HOLDRITE – #100-18

- Ideal for lavatory/sink or water closet
- Unique design and manufacturing process for low cost bracket
- Copper-bonded, steel bracket
- 5/8" holes on 2" centers

Model#	Size	For Pipe Size(s)	Box Qty
100-18	20"	1/2" CTS	100



HOLDRITE – #101-18, #101-26, #101-18-R, #101-26-R

- Ideal for lavatory and water closet
- Ideal for copper bullets requiring a more rigid installation
- Copper-bonded, steel bracket
- #101-18-R & #101-26-R extruded holes provide additional soldering surface
- 5/8" holes on 2" centers (#101-26-R also has two 7/8" holes on 8" centers)

Model#	Size	For Pipe Size(s)	Box Qty
101-18	20"	1/2" CTS	50
101-26	26"	1/2" CTS	50
101-18-R	20"	1/2" CTS	25
101-26-R	26"	1/2", 3/4" CTS	25



HOLDRITE – #102-18, #102-26

- Ideal for water heater and relief line applications
- Copper-bonded, heavy-gage steel bracket
- Alternating 7/8" and 1-1/8" holes on 4" centers

Model#	Size	For Pipe Size(s)	Box Qty
102-18	20"	3/4", 1" CTS	50
102-26	26"	3/4", 1" CTS	50

NEW



HOLDRITE – #107-18, #107-26

- Ideal for multiple applications such as lavatory, water closet and water heater
- Copper-bonded, heavy-gage steel bracket
- Holes on 2" centers for 1/2" tubing and holes on 4" centers for 3/4" & 1" tubing
- #107-26 also has two holes for 1-1/4" tubing on 8" centers

Model#	Size	For Pipe Size(s)	Box Qty
107-18	20"	1/2", 3/4", 1" CTS	50
107-26	26"	1/2", 3/4", 1", 1-1/4" CTS	50



HOLDRITE – #108-20, #108-26

- Ideal for multiple applications such as lavatory, water closet and water heater
- Rolled edges for extra strength and extruded holes for additional soldering surface
- Copper-bonded steel bracket
- Holes on 2" centers for 1/2" tubing and holes on 4" centers for 3/4" & 1" tubing

Model#	Size	For Pipe Size(s)	Box Qty
108-20	20"	1/2", 3/4", 1" CTS	50
108-26	26"	1/2", 3/4", 1", CTS	50



HOLDRITE – #150-20, #150-26

- Ideal for multiple applications such as lavatory, water closet, & water heater
- 5/8" and 7/8" holes on 4" centers
- Copper-bonded, heavy-gage steel bracket

Model#	Size	For Pipe Size(s)	Box Qty
150-20	20"	1/2", 3/4" CTS	50
150-26	26"	1/2", 3/4" CTS	50



HOLDRITE – #140, #141

- #140 is ideal for lavatory, water closet and water heater applications
- Ideal for tubing that is capped prior to soldering onto bracket
- #141 is ideal for tub spout and shower diverter installations with split ends for horizontal and vertical mounting adding extra versatility
- Extruded notches for 1/2" tubing on 1" centers and 3/4" tubing on 4" centers

Model#	Size	For Pipe Size(s)	Box Qty
140	20"	1/2", 3/4" CTS	50
141	20"	1/2", 3/4" CTS	50



HOLDRITE – #170-C, #170, #170-S

- Ideal for multiple applications
- Supports tubing in vertical and horizontal positions
- #170-C is a Copper-bonded, steel bracket
- #170-S is galvanized steel bracket with (2) screws

Model#	Size	For Pipe Size(s)	Box Qty
170-C	18" X 5/8"	Various	50
170	18" X 5/8"	Various	50
170-S	18" X 5/8"	Various	50



HOLDRITE – #109-N-6

- Ideal for water closet applications and also functions as a nail plate
- Copper-bonded, heavy-gage steel bracket
- Supports 1/2" stub-outs at various heights from 2-1/4" – 6" and 3/4" at 3-1/2" height

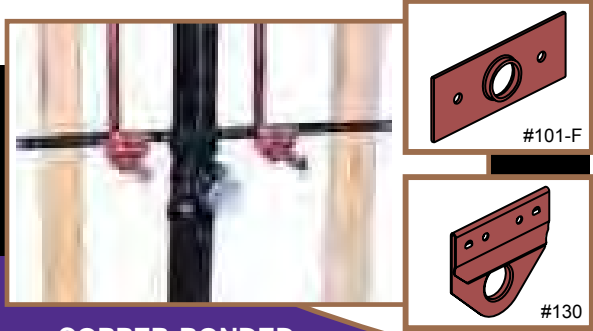
Model#	Size	For Pipe Size(s)	Box Qty
109-N-6	6-1/2"	1/2", 3/4" CTS	50



HOLDRITE – #109-A-9

- Ideal for water closet applications
- Copper-bonded, heavy-gage steel L-bracket
- Six 5/8" holes at 2-3/4", 4-1/2", 6", 7", 8" and 9"
- Most holes are extruded for additional strength

Model#	Size	For Pipe Size(s)	Box Qty
109-A-9	9-1/2"	1/2" CTS	50



HOLDRITE – #101-F, #130 - #132

- #101-F is ideal for Copper tubing penetrating through the floor; 5/8" extruded hole
- #130-#132 is ideal for lavatory/sink, water closet, water heater, & others; Solid Copper clip for support of 1/2", 3/4", and 1" tubing

Model#	Size	For Pipe Size(s)	Box Qty
101-F	3" X 1-1/4"	1/2" CTS	50
130	2-1/4" X 2"	1/2" CTS	100
131	2-1/4" X 2-3/8"	3/4" CTS	100
132	2-1/4" X 2-5/8"	1" CTS	100

PRE-FAB/SPECIALTY

Support and Alignment Solutions



- Unique Copper Bonding Process
- Heat the Pipe not the Bracket
- Allows Installation of Rough-In Prior to Studs Being Erected
- Horizontal and Vertical Solutions
- Ideal System for the Pre-fabrication Shop
- Rigid, Quality and Professional Installation

HOLDRITE – #110-S-1/2

- Ideal for lavatory and sink
- Easy pre-fabrication at the shop or on the job site
- Install directly to the waste/vent pipe prior to studs being erected
- Copper-bonded, heavy-gage steel bracket
- Self-locking stainless steel band and self-adhesive isolating felt included
- For 1/2" Copper tubing on 4", 6" and 8" centers

Model#	Size	For Pipe Size(s)	Box Qty
110-S-1/2	9-1/4" X 2-1/2"	1/2" CTS	50

HOLDRITE – #111-S

- Ideal for vertical or horizontal installations and fits in 3-1/2" or wider wall
- Copper-bonded, steel bracket mounts directly to waste/vent pipe
- Self-locking stainless steel band and self-adhesive isolating felt included
- Supports 1/2" tubing on 4", 6", 8" centers and 3/4" tubing on 4" and 8" centers

Model#	Size	For Pipe Size(s)	Box Qty
111-S	9-1/2" X 1-1/2"	1/2", 3/4" CTS	50

HOLDRITE – #115, #115-C

- Multiple horizontal/vertical mounting applications
- Easy pre-fabrication at the shop or on the job site
- Galvanized steel bracket mounts directly to the waste/vent pipe prior to studs being erected
- Supports 1/2" to 2" tubing and comes with self-locking stainless steel band, metal straps, screws and self-adhesive isolating felt strip

Model#	Size	For Pipe Size(s)	Box Qty
115	7-1/2" X 2"	1/2"-2" CTS/IPS	25
115-C	7-1/2" X 2"	1/2"-2" CTS/IPS	25

HOLDRITE – #117-3 - 117-8, #117-3D - #117-8D

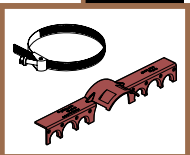
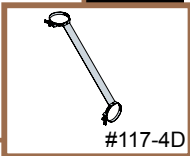
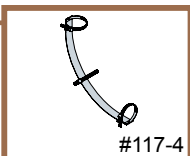
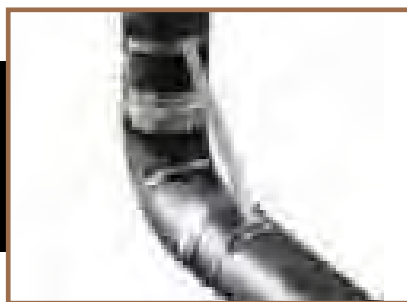
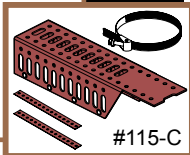
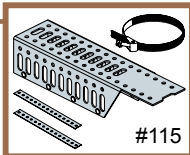
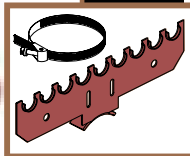
- Ideal for No Hub DWV joints in excessive pressure situations
- Prevents separation of No Hub pipe and fittings at change of direction
- Steel band with stainless steel clamps
- #117-3D - #117-8D (Supplemental Kits) for added diagonal support

Model#	Size	For Pipe Size(s)	Box Qty
117-3	Outside Bend Support Kit	2" - 3" IPS	6
117-4	Outside Bend Support Kit	4" IPS	6
117-6	Outside Bend Support Kit	6" IPS	6
117-8	Outside Bend Support Kit	8" IPS	6
117-3D	Diagonal Support Kit	2" - 3" IPS	6
117-4D	Diagonal Support Kit	4" IPS	6
117-6D	Diagonal Support Kit	6" IPS	6
117-8D	Diagonal Support Kit	8" IPS	6

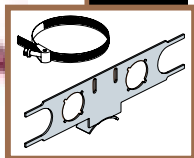
HOLDRITE – #118-T-6, #118-T-8

- Ideal for lavatory/sink stub outs or vertical mid-span support
- Easy pre-fabrication at the shop or on the job site
- Install directly to the waste/vent pipe prior to studs being erected
- Copper-bonded, heavy-gage steel bracket
- #118-T-6 Supports 1/2" tubing on 4" and 8" centers and 3/4" tubing on 6" centers
- #118-T-8 Supports 1/2" tubing on 4" and 6" centers and 3/4" tubing on 8" centers
- Fits within a 2-1/2" stud wall
- Self-locking stainless steel band and self-adhesive isolating felt included

Model#	Size	For Pipe Size(s)	Box Qty
118-T-6	9-1/8" X 1-3/4" X 1-1/2"	1/2", 3/4" CTS	50
118-T-8	9-1/8" X 1-3/4" X 1-1/2"	1/2", 3/4" CTS	50



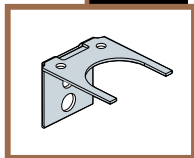
HOLDRITE – #110-R



- Ideal for lavatory and sink
- Easy pre-fabrication at the shop or on the job site
- Install directly to the waste/vent pipe prior to studs being erected
- Galvanized steel bracket with key design allows easy integration for #100 series, #400 series and #260 series inserts
- Supports on 4" and 8" centers
- Self-locking stainless steel band & self-adhesive isolating felt included

Model#	Size	For Pipe Size(s)	Box Qty
110-R	10" X 2-3/4"	1/2", 3/4", 1" CTS	50

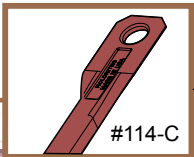
HOLDRITE – #121



- Ideal for vertical single runs
- Install directly to the waste/vent pipe or building structure prior to studs being erected
- Galvanized steel bracket
- Use in conjunction with #100 series inserts & #1004/#1005 steel bands
- Unique "U" shape support for 1/2", 3/4", and 1" tubing

Model#	Size	For Pipe Size(s)	Box Qty
121	2" X 1-1/2"	1/2", 3/4", 1" CTS	25

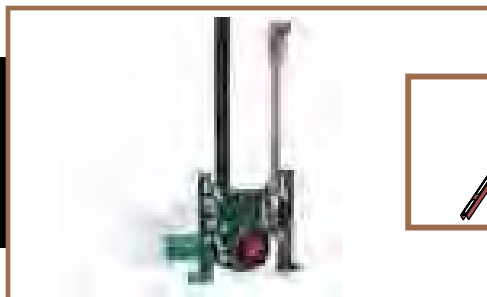
HOLDRITE – #114-C, #114-CO, #114-CR



- For 1" flush valve support on wall hung toilet carriers
- Copper-bonded, heavy-gage steel brackets mount directly to 4-bolt toilet carrier and position flush valve at height of 11-1/2" above toilet
- Allows for rough-in prior to framing being erected
- 4-1/2" offset center line rough-in with #114-C and #114-CR
- #114-CO provides 4-3/4" off set rough-in (right or left hand)
- #114-CR allows for support of pre-capped stub out

Model#	Size	For Pipe Size(s)	Box Qty
114-C	23-1/4" X 2-1/2"	1" CTS	6
114-CO	23-1/4" X 2-1/2"	1" CTS	6
114-CR	23-1/4" X 2-1/2"	1" CTS	6

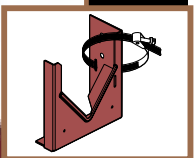
HOLDRITE – #114-C-EXT



- Ideal for water closet carriers where extended rough-in height is needed
- Copper-bonded, heavy-gage steel brackets mount directly to 4-bolt closet carrier
- Adds an additional 8-1/2" to 24-1/2" height to carrier bracket (includes hardware)
- Compatible with HOLDRITE #114 series brackets

Model#	Size	For Pipe Size(s)	Box Qty
114-C-EXT	27" X 1"	N/A	6

HOLDRITE – #V-2

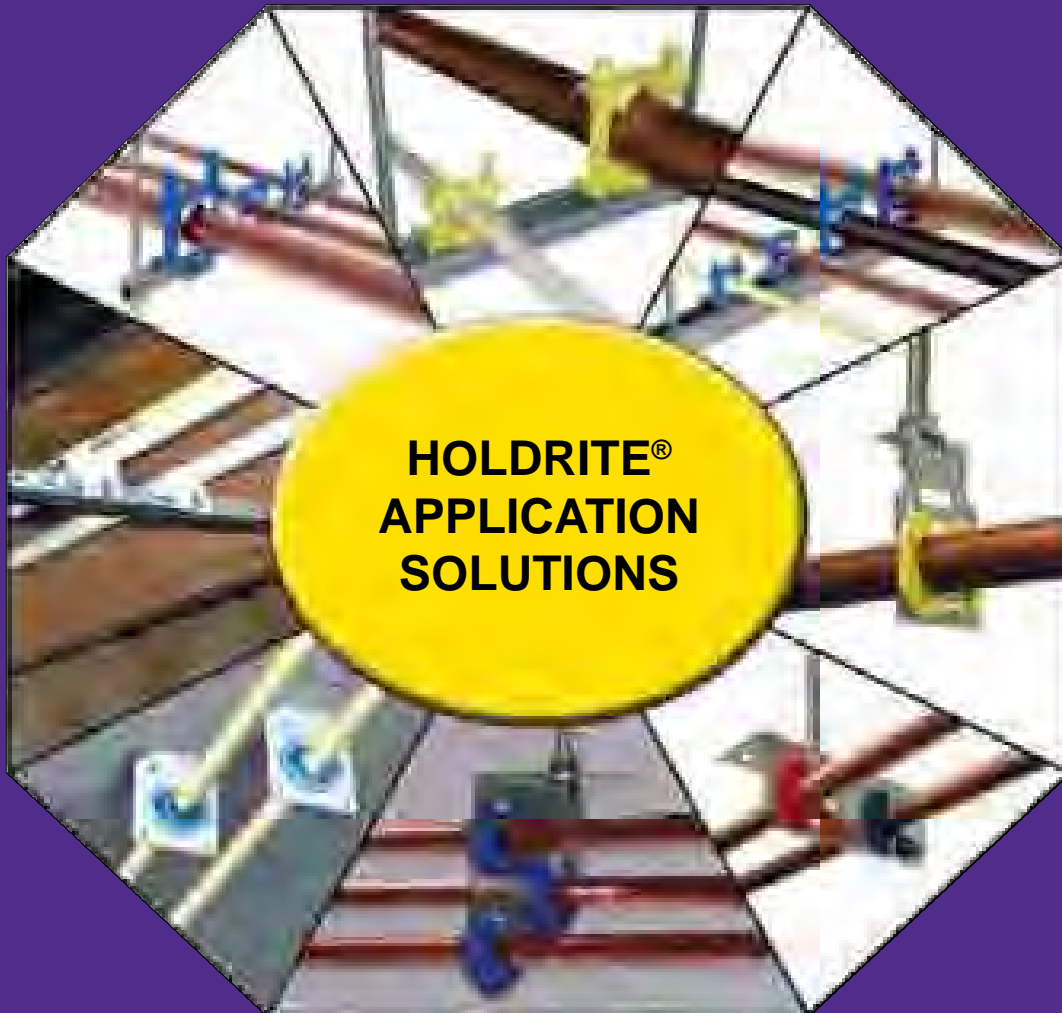


- Ideal for horizontal applications such as plumbing chase walls
- Easy pre-fabrication at the shop or on the job site
- Mounts to waste/vent pipe or building structure prior to studs being erected
- Copper-bonded, heavy-gage steel bracket
- Supports 1/2" to 3" tubing with a 250-pound load capacity
- Comes with self-locking stainless steel band and isolating felt pad

Model#	Size	For Pipe Size(s)	Box Qty
V-2	4-1/2" X 4-1/2"	1/2" - 3" CTS	25

OVERHEAD

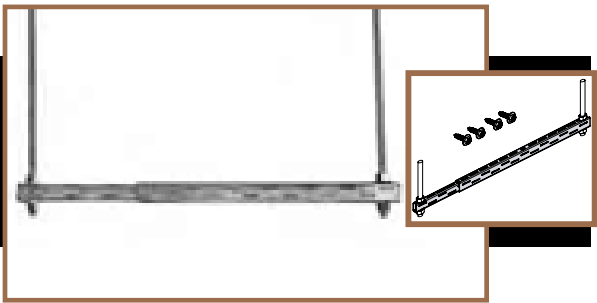
Support and Alignment Solutions



- Overhead Pipe Support for Copper, PEX, CPVC, and others
- High & Tight Runs, Single & Multiple Runs
- Versatility with Cast-In-Place Concrete Slabs, All-Thread Rod, and Direct to Ceiling

Flame Rated = UL 94 V-2

Smoke & Flame Rated = ASTM E84 25/50 & UL 94 V-0



HOLDRITE EZ-STRUT™ – #EZ-1, #EZ-2

- Ideal for multiple pipe run applications including Gas, Copper, CPVC, & PEX
- Galvanized steel trapeze platform with telescoping design
- Works best with HOLDRITE #250 and #280 Clamps
- Attaches to standard all-thread rod with load rating up to 1,000 pounds
- Includes four screws

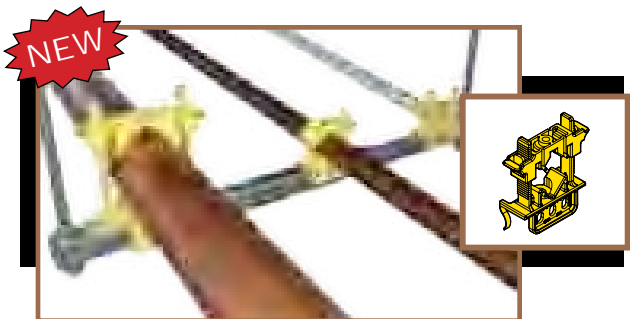
Model#	Size	For Pipe Size(s)	Box Qty
EZ-1	12" to 21"	Various	25
EZ-2	23" to 40"	Various	25



HOLDRITE VARIABLE CLAMPS – #250, #280

- Ideal for securing tubing to EZ-Strut trapeze platform
- Sound-rated/isolation variable closure clamps
- Fire retardant framework meets requirements of UL 94 V-2 rating
- Supports 3/8" to 2" tubing/piping with load rating of up to 300 pounds

Model#	Size	For Pipe Size(s)	Box Qty
250	2-3/8" X 2-5/8"	3/8" to 1" CTS	50
280	4-3/8" X 5-1/8"	1" to 2" CTS/IPS	50



HOLDRITE CLAMPS – #250-S, #280-S

- Ideal for securing tubing to EZ-Strut trapeze platform
- Meets requirements of UL 94 V-0 and ASTM E84 25/50 ratings
- Supports 3/8" to 2" tubing/piping with load rating of up to 300 pounds

Model#	Size	For Pipe Size(s)	Box Qty
250-S	2-3/8" X 2-5/8"	3/8" to 1" CTS	50
280-S	4-3/8" X 5-1/8"	1" to 2" CTS/IPS	50



HOLDRITE STRUT CLAMP – #257-S, #287-S

- Ideal for securing Copper, PEX, CPVC, and gas tubing directly to strut/channel
- No tools required and eliminates need for over 20 strut clamp SKUs
- Supports 3/8" to 2" tubing/piping with load rating of up to 300 pounds
- Provides dissimilar metal isolation
- Meets requirements of UL 94 V-0 and ASTM E84 25/50 ratings

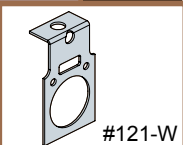
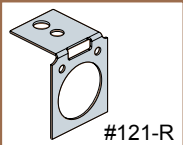
Model#	Size	For Pipe Size(s)	Box Qty
257-S	2-1/2" x 2-7/8"	3/8" - 1" CTS	50
287-S	3-1/2" x 4-7/8"	1" - 2" CTS/IPS	50



HOLDRITE STRUT CLAMP – #257, #287 #257-P, #287-P

- Ideal for securing Copper, PEX, CPVC, and gas tubing directly to strut/channel
- #257-P, #287-P include sound-rated/isolation pads to reduce noise & vibration
- No tools required and eliminates need for over 20 strut clamp SKUs
- Supports 3/8" to 2" tubing/piping with load rating of up to 300 pounds
- Fire retardant framework meets requirements of UL 94 V-2 rating

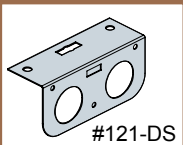
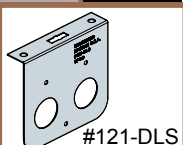
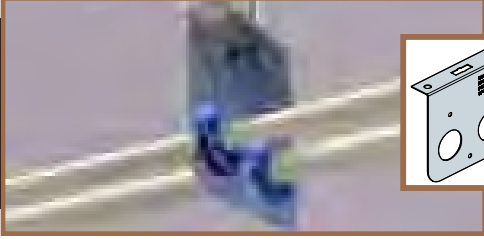
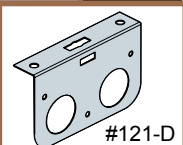
Model#	Size	For Pipe Size(s)	Box Qty
257	2-1/2" x 2-7/8"	3/8" - 1" CTS	50
257-P	2-1/2" x 2-7/8"	3/8" - 1" CTS	50
287	3-1/2" x 4-7/8"	1" - 2" CTS/IPS	50
287-P	3-1/2" x 4-7/8"	1" - 2" CTS/IPS	50



HOLDRITE – #121-R, #121-W, #121-RLS

- Ideal for single pipe run applications including Copper, CPVC, and PEX
- #121-R provides 1-1/4" center line height from structure
- #121-W provides a 2" center line height from structure
- #121-RLS provides 3" center line height from structure
- Galvanized steel bracket attaches directly to flat surface or suspends from 3/8" all-thread rod, providing any desired height
- Bracket can be cast into concrete slab, then bent into position
- Compatible with HOLDRITE #400 and #261/#262 inserts

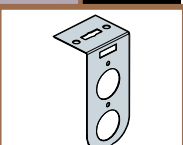
Model#	Size	For Pipe Size(s)	Box Qty
121-R	2" X 1-3/4" X 1-1/2"	1/2", 3/4", 1" CTS	25
121-W	3" X 1-3/4" X 3/4"	1/2", 3/4", 1" CTS	25
121-RLS	4-1/2" x 2-5/8" x 1"	1/2", 3/4", 1" CTS	50



HOLDRITE – #121-D, #121-DS, #121-DLS

- Ideal for dual pipe run applications including Copper, CPVC, and PEX
- #121-D provides 2" center line height from structure
- #121-DS provides 1-1/4" center line height from structure
- #121-DLS provides 3" center line height from structure
- Galvanized steel bracket attaches directly to flat surface or suspends from 3/8" all-thread rod, providing any desired height
- Bracket can be cast into concrete slab, then bent into position
- Compatible with HOLDRITE #400 and #261/#262 inserts

Model#	Size	For Pipe Size(s)	Box Qty
121-D	5" X 3" X 1"	1/2", 3/4", 1" CTS	25
121-DS	5" x 2-1/4" x 1-3/4"	1/2", 3/4", 1" CTS	25
121-DLS	5" x 4-1/2" x 1"	1/2", 3/4", 1" CTS	25



HOLDRITE – #121-L

- Ideal for dual pipe run applications including Copper, CPVC, and PEX
- Provides 2" and 4" center line height from structure
- Galvanized steel bracket attaches directly to flat surface or suspends from 3/8" all-thread rod
- Bracket can be cast into concrete slab, then bent into position
- Compatible with HOLDRITE #400 and #261/#262 inserts

Model#	Size	For Pipe Size(s)	Box Qty
121-L	5" X 2-1/2" X 2"	1/2", 3/4", 1" CTS	25

HOLDRITE – #121-O

- Ideal for three pipe run applications including Copper, CPVC, and PEX
- Provides 1-1/4", 2-3/8", 3-1/2" centerline height from structure
- Galvanized steel bracket attaches directly to flat surface or suspends from 3/8" all-thread rod, providing any desired height
- Bracket can be cast into concrete slab, then bent into position
- Compatible with HOLDRITE #400 and #261/#262 inserts



Model#	Size	For Pipe Size(s)	Box Qty
121-O	4-1/2" X 4" X 1-1/2"	1/2", 3/4", 1" CTS	25

HOLDRITE HANGOVER – #125, #125-D

- Cast-in-place concrete hanger bracket for horizontal support
- Galvanized steel bracket with 1-1/4", 2", 4" center line heights from structure
- Meets MSS-SP-58 load requirements
- Compatible with HOLDRITE #400 and #261/#262 inserts



Model#	Size	For Pipe Size(s)	Box Qty
125	8-7/8" x 2-1/2"	1/2", 3/4", 1" CTS	50
125-D	9-5/8" x 5"	1/2", 3/4", 1" CTS	50

HOLDRITE SWIVEL LOOP HANGERS – #300 - #310

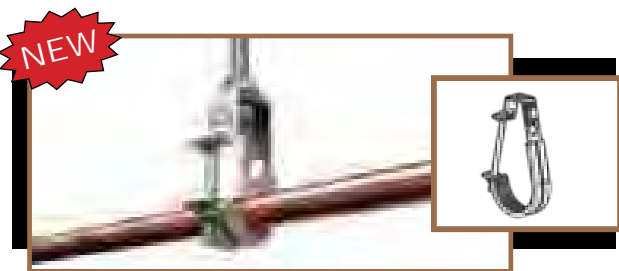
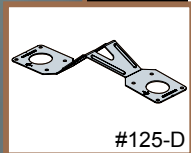
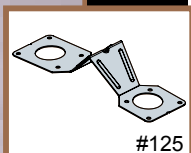
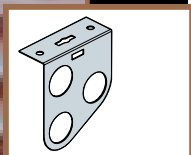
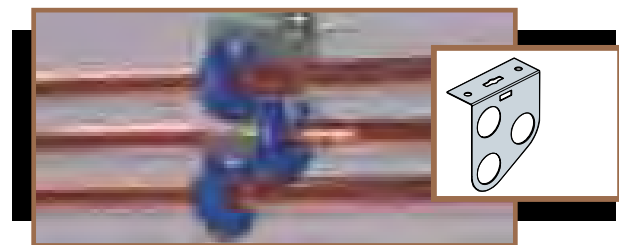
- Ideal for dissimilar metal isolation and noise & vibration isolation
- Galvanized steel loop hanger with 3/8" swivel nut and rubber liner
- Conforms with Federal Specification WW-H-171 (Type 10), Manufacturers Standardization Society (MSS) SP-58 and SP-69 (Type 10)

Model#	For Pipe Size(s)		Box Qty
	IPS Size	CTS Size	
300	n/a	1/2"	100
301	1/2"	3/4"	100
302	3/4"	1"	100
303	1"	1-1/4"	100
304	1-1/4" - 1-1/2"	1-1/2"	100
306	2"	2"	100
307	2-1/2"	2-1/2"	50
308	3"	3"	50
310	4"	4"	25

HOLDRITE J-HANGERS – #320 - #330

- Ideal for dissimilar metal isolation and noise & vibration isolation
- Galvanized steel J-hanger with rubber liner
- Conforms with Manufacturers Standardization Society (MSS) SP-58 and SP-69 (Type 5)

Model#	For Pipe Size(s)		Box Qty
	IPS Size	CTS Size	
320	n/a	1/2"	50
321	1/2"	3/4"	50
322	3/4"	1"	50
323	1"	1-1/4"	50
324	1-1/4"	1-1/2"	50
325	1-1/2"	2"	50
326	2"	2-1/2"	50
327	2-1/2"	3"	25
328	3"	n/a	25
330	4"	4"	25



TELESCOPING

Support and Alignment Solutions

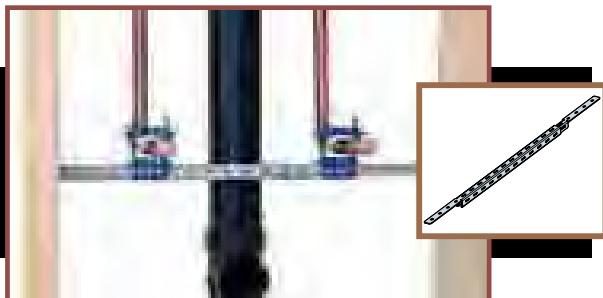


- Superior Strength and Telescoping Design
- Supports Copper, PEX, CPVC and Others
- Numerous Components Integrate Directly into Multiple Sides of Brackets
- Ideal for Vertical or Horizontal Installations

HOLDRITE STOUT BRACKET® and HOLDRITE® EZ-STRUT™ Load Ratings on page 43

HOLDRITE STOUT BRACKET® – #SB1, #SB2 #SB1S, #SB2S

- Multi-purpose galvanized steel bracket supports various application solutions
- Ideal for lavatory, shower, water closet, vertical, horizontal and much more
- Telescoping design supports Copper, PEX, CPVC, and many other types of piping
- Numerous clamps and fittings integrate onto multiple sides of the Stout Bracket for superior strength and versatility
- SB1S and SB2S includes four screws



Model#	Size	For Pipe Size(s)	Box Qty
SB1	10" to 18"	Various	50
SB1S	10" to 18"	Various	50
SB2	13" to 25"	Various	50
SB2S	13" to 25"	Various	50

HOLDRITE STOUT BRACKET® – #SB3, #SB4

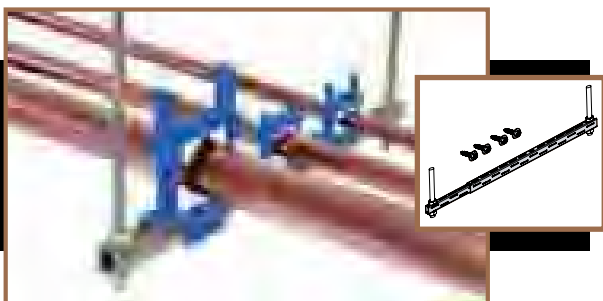
- Ideal for shower head, tub spout, vertical mid-span, and much more
- Supports both 2-eared and 3-eared 90s
- Telescoping design supports CPVC, Copper, and PEX tubing
- Integrates with several HOLDRITE clamps and other industry standard components



Model#	Bracket Size	For Pipe Size(s)	Box Qty
SB3	10-1/4" to 17-1/2"	Various	50
SB4	15-1/4" to 25-1/2"	Various	50

HOLDRITE EZ-STRUT™ – #EZ-1, #EZ-2

- Galvanized steel trapeze platform with telescoping design
- Ideal for multiple pipe run application including gas, Copper, CPVC, PEX
- Sizing from 12" to 40" with load rating of up to 1000 pounds
- Compatible with HOLDRITE #250 & #280 clamps & other industry clamps
- Attaches to standard all-thread rod
- Includes four screws



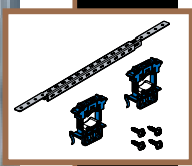
Model#	Size	For Pipe Size(s)	Box Qty
EZ-1	12" to 21"	Various	25
EZ-2	23" to 40"	Various	25

HOLDRITE VARIABLE CLAMPS – #250, #280

- Ideal for noise and vibration isolation and dissimilar metal isolation
- Compatible with Copper, PEX, CPVC, CSST, PVC, Steel, & other materials
- Variable closure clamp mounts directly to Stout Bracket & EZ-Strut Bracket
- Supports up to 2" pipe sizes with sound rating



Model#	Size	For Pipe Size(s)	Box Qty
250	2-3/8" X 2-5/8"	3/8" to 1" CTS	50
280	4-3/8" X 5-1/8"	1" to 2" CTS/IPS	50

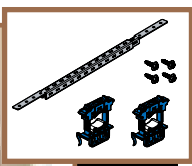
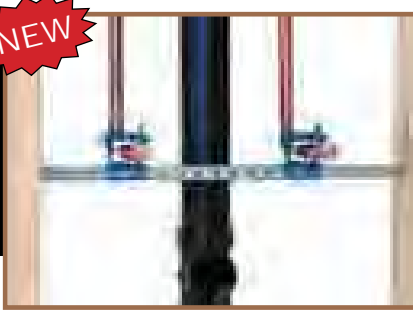


HOLDRITE STOUT BRACKET – #SB1-2502, #SB2-2502

- Multi-purpose galvanized steel bracket, (2) two HOLDRITE® #250 clamps, 4 screws
- Ideal for lavatory, shower, water closet, vertical, horizontal and much more
- Telescoping design supports Copper, PEX, CPVC, and many other types of piping
- Numerous clamps and fittings integrate into multiple sides of the Stout Bracket for superior strength and versatility

Model#	Size	For Pipe Size(s)	Box Qty
SB1-2502	10" to 18"	1/2"-1" CTS	25
SB2-2502	13" to 25"	1/2"-1" CTS	25

NEW

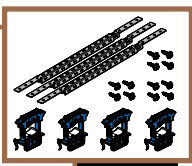


HOLDRITE REMODEL & REPAIR KIT – #HR-RR-1

- Ideal for Remodel & Repair or new construction for Sink/Toilet applications
- Telescoping bracket and variable closure clamps support Copper, PEX, and CPVC
- Reduces noise and vibration isolation and dissimilar metal isolation
- Installation photos on packaging
- Ideal for Counter Sales
- Includes (1) Stout Bracket, (2) clamps, and (4) screws

Model#	Size	For Pipe Size(s)	Kit Qty	6 PAK Qty	Case Qty
HR-RR-1	10" to 18"	1/2" to 1" CTS	1	6	36

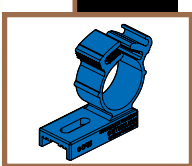
NEW



HOLDRITE REMODEL & REPAIR KIT – #HR-RR-2

- Ideal for Remodel & Repair or new construction for Tub/Shower applications
- Telescoping bracket and variable closure clamps support Copper, PEX, and CPVC
- Reduces noise and vibration isolation and dissimilar metal isolation
- Installation photos on packaging
- Ideal for Counter Sales
- Includes (3) Stout Brackets, (4) clamps, and (12) screws

Model#	Size	For Pipe Size(s)	Kit Qty	6 PAK Qty	Case Qty
HR-RR-2	10" to 18"	1/2" to 1" CTS	1	6	36



HOLDRITE PRO CLAMP – #201, #202

- Ideal for securing single Copper, PEX, CPVC tubing to Stout Bracket
- Nylon clamps attach with a single fastener
- Flame rated per UL 94 V-2 standards

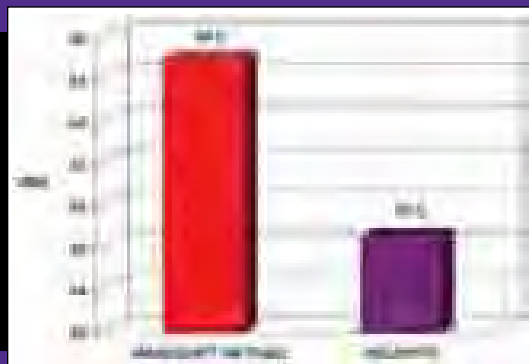
Model#	Size	For Pipe Size(s)	Box Qty
201	2-1/8" X 1-7/8"	1/2" CTS	50
202	2-1/8" X 2-1/8"	3/4" CTS	50

ACOUSTICAL

Noise and Vibration Isolation Solutions



**Reduces
Plumbing Noise
by 87% on Average**



- Integrates with HOLDRITE® Pipe Support Systems
- Reduces Plumbing Noise and Vibration
- Compatible with Copper, PEX, CPVC, Cast Iron, and Other Materials
- ISO-3822 Certified Lab Tested
- Field Tested and Proven

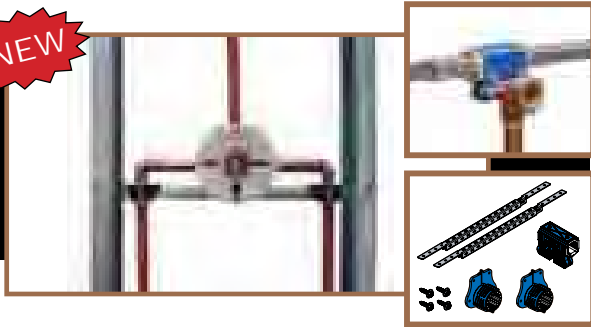


HOLDRITE SILENCER – #265

- Shower head/tub spout acoustical anchor point clamp, lab tested
- Ideal for minimizing noise transfer to the building system
- Mounts directly to the HOLDRITE Stout Bracket (SB1 + SB2)
- Two screws included

Model#	Clamp Size	Box Qty
265	2-1/4" X 1-5/8" X 1-1/8"	50

NEW

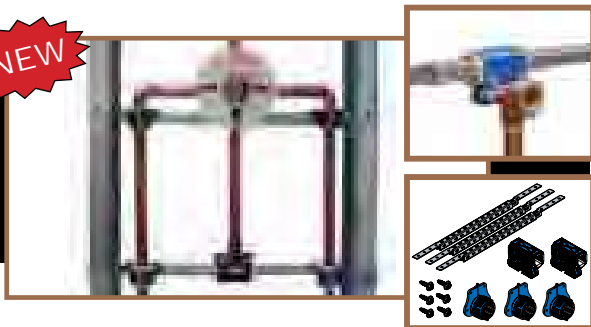


HOLDRITE SILENCER – #HSS

- Ideal for noise & vibration isolation at Shower Head and Diverter
- Components are ISO-3822 certified lab tested
- Includes (2) #SB2S, (2) #261, and (1) #265

Model#	Bracket Size	Tube / Pipe Size	Box Qty
HSS	13" to 25"	1/2" CTS	10

NEW



HOLDRITE SILENCER – #HSTS

- Ideal for noise and vibration isolation at Shower Head and Tub/Shower Diverter
- Components are ISO-3822 certified lab tested
- Includes (3) #SB2S, (3) #261, and (2) #265

Model#	Bracket Size	Tube / Pipe Size	Box Qty
HSTS	13" X 25"	1/2" CTS	10



HOLDRITE STOUT BRACKET® – #SB1S, #SB2S

- Multi-purpose galvanized bracket supports various application solutions
- Ideal for lavatory, shower, water closet, vertical, horizontal and much more
- Telescoping design supports Copper, PEX, CPVC, and other types of piping
- Numerous acoustically-rated components integrate into multiple sides of the Stout Bracket for superior strength and versatility
- Includes four screws

Model#	Bracket Size	For Pipe Size(s)	Box Qty
SB1S	10" to 18"	Various	50
SB2S	13" to 25"	Various	50



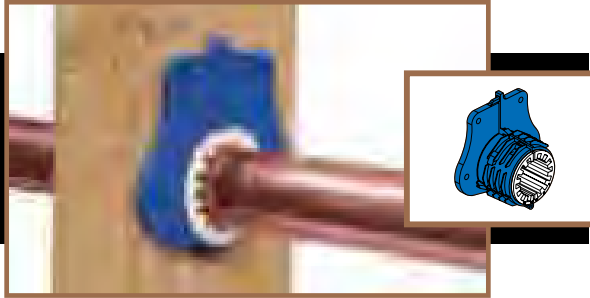
HOLDRITE SILENCER – #250, #280

- Ideal for sound-rated and isolation applications, lab tested
- Compatible with Copper, PEX, CPVC, iron pipe and other system materials
- Variable closure clamp mounts directly to Stout Bracket and EZ-Strut Bracket
- Supports up to 2" pipe sizes, with load ratings up to 300 lbs.

Model#	Clamp Size	For Pipe Size(s)	Box Qty
250	2-3/8" X 2-5/8"	3/8" - 1" CTS	50
280	4-3/8" X 5-1/8"	1" - 2" CTS/IPS	50

HOLDRITE SILENCER – #261 - #264

- Ideal for sound-rated and isolation applications, lab tested
- Compatible with Copper, PEX, and CPVC tubing
- Thru-stud insert/suspension clamp, dual purpose design
- Integrates directly with Stout Bracket or EZ-Strut Bracket
- Supports up to 1-1/4" tubing



Model#	Hole Needed	For Pipe Size(s)	Box Qty
261	1-3/8" Diameter	1/2" CTS	50
262	1-3/8" Diameter	3/4" CTS	50
263	2" Diameter	1" CTS	50
264	2" Diameter	1-1/4" CTS	50

HOLDRITE SILENCER – #255, #285

- Ideal for sound-rated and isolation applications, lab tested
- Compatible with Copper, PEX, CPVC, iron pipe and other system materials
- Flat base, variable closure clamp mounts directly to #SB3 & #SB4, wood, metal, or other surfaces
- Supports up to 2" pipe sizes, with load ratings up to 300 lbs.



Model#	Clamp Size	For Pipe Size(s)	Box Qty
255	2-7/8" X 2"	3/8" - 1" CTS	50
285	4-3/8" X 4"	1" - 2" CTS/IPS	50

HOLDRITE VARIABLE STRUT CLAMP – #257-P, #287-P

- Ideal for securing Copper, PEX, CPVC, and gas tubing directly to strut/channel
- No tools required and eliminates need for over 20 strut clamp SKUs
- Supports 3/8" to 2" tubing/piping with load rating of up to 300 pounds
- Includes isolation pads to minimize noise and vibration, lab tested
- Provides dissimilar metal isolation



Model#	Size	For Pipe Size(s)	Box Qty
257-P	2-1/2" x 2-7/8"	3/8" - 1" CTS	50
287-P	3-1/2" x 4-7/8"	1" - 2" CTS / IPS	50

HOLDRITE SILENCER – #270

- Lab-tested rubber isolation liner
- Ideal for sound-rated and isolation applications for Copper, PEX, CPVC, PVC, Iron pipe, ABS, and Cast Iron
- Attaches to loop hangers and HOLDRITE Stout Bracket



Model#	Size	Hanger Size	Box Qty
270	3/4" Wide	Various	50' Roll

HOLDRITE SILENCER – #271

- Lab-tested, self-adhesive rubber isolation liner
- Ideal for sound-rated and isolation applications for Copper, PEX, CPVC, PVC, Iron pipe, ABS, and Cast Iron
- Attaches to clevis hangers or as a pipe wrap



Model#	Size	Hanger Size	Box Qty
271	2" Wide	Various	25' Roll

NEW



HOLDRITE SWIVEL LOOP HANGERS – #300 - #310

- Ideal for noise & vibration isolation and dissimilar metal isolation
- Galvanized steel loop hanger with 3/8" swivel nut and rubber liner
- Conforms with Federal Specification WW-H-171 (Type 10), Manufacturers Standardization Society (MSS) SP-58 and SP-69 (Type 10)

Model#	For Pipe Size(s)		Box Qty
	IPS Size	CTS Size	
300	n/a	1/2"	100
301	1/2"	3/4"	100
302	3/4"	1"	100
303	1"	1-1/4"	100
304	1-1/4" - 1-1/2"	1-1/2"	100
306	2"	2"	100
307	2-1/2"	2-1/2"	50
308	3"	3"	50
310	4"	4"	25

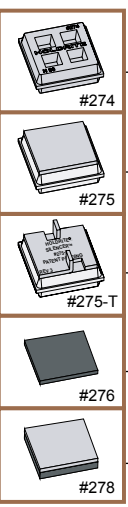
NEW



HOLDRITE J-HANGERS – #320 - #330

- Ideal for noise & vibration isolation and dissimilar metal isolation
- Galvanized steel J-hanger with rubber liner
- Conforms with Manufacturers Standardization Society (MSS) SP-58 and SP-69 (Type 5)

Model#	For Pipe Size(s)		Box Qty
	IPS Size	CTS Size	
320	n/a	1/2"	50
321	1/2"	3/4"	50
322	3/4"	1"	50
323	1"	1-1/4"	50
324	1-1/4"	1-1/2"	50
325	1-1/2"	2"	50
326	2"	2-1/2"	50
327	2-1/2"	3"	25
328	3"	n/a	25
330	4"	4"	25



HOLDRITE SILENCER – #274, #275, #275-T, #276, #278

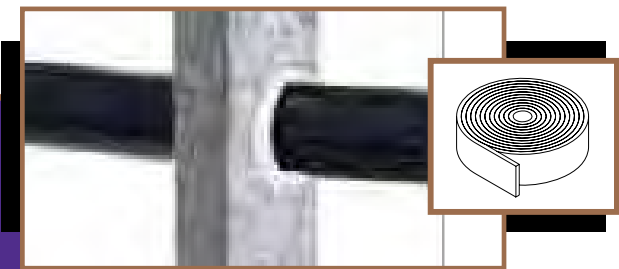
- #274, #275, #275-T have lab-tested, Neoprene white vibration isolation pad
- Rubber vibration isolation pad ideal for riser clamps or equipment support
- Minimizes noise and vibration transfer at piping stacks and risers
- #275, #275-T, & #278 includes additional 10-gage, galvanized steel bearing plate
- #275-T includes vertical tabs for keeping riser clamp in place

Model#	Size	Pipe Size	Box Qty
274	2" X 2" X 3/4"	Various	180
275	2" X 2" X 7/8"	Various	144
275-T	2" X 2" X 7/8"	Various	144
276	2" X 2" X 1/4"	Various	50
278	2" X 2" X 1/4"	Various	50

HOLDRITE SILENCER – #272-2, #Felt 100

- Lab-tested, self-adhesive white felt
- Ideal for sound-rated and isolation applications for Copper, PEX, CPVC, PVC, Iron pipe, ABS, and Cast Iron
- Eliminates dissimilar metal contact and minimizes noise/vibration transfer
- #272-2 is 1/4" thick






Model#	Size	Tube / Pipe Size	Box Qty
272-2	2" X 1/4" X 25'	Various	25' Roll
Felt 100	2-1/4" X 1/8" X 100'	Various	100' Roll



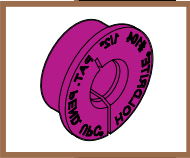
ISOLATORS & CLAMPS

Support and Alignment Solutions



Color	Rating Description
	Standard Polyethylene
	Standard Polypropylene
	Standard Polypropylene
	Flame Rated: Meets UL 94 V-2
	Smoke and Flame Rated: Meets UL 94 V-0 & ASTM E84 25/50

Isolators and Clamps

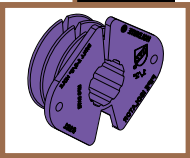


HOLDRITE ISOLATORS – #104 - #106

- Ideal for Copper, PEX, and CPVC tubing in stub-out locations with #103 series, #121 series, and #110-R brackets
- Compatible with #121 series brackets for other applications
- Tubing size up to 1"



Model#	Hole Needed	For Pipe Size(s)	Box Qty
104	1-3/8" Diameter	1/2" CTS	100
105	1-3/8" Diameter	3/4" CTS	100
106	1-3/8" Diameter	1" CTS	100

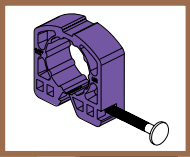
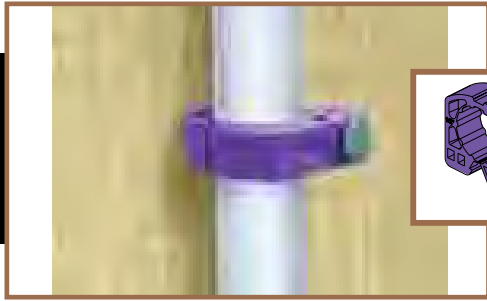


HOLDRITE THRU-STUD ISOLATORS – #161 - #163

- Ideal for thru-stud applications in wood or metal framing (1-3/8" or 1-11/32" holes)
- Ideal for isolation of Copper, PEX, and CPVC tubing
- Tubing size up to 1"



Model#	For Pipe Size(s)	Bag Qty	Master Carton Qty
161	1/2" CTS	50	500
162	3/4" CTS	50	500
163	1" CTS	25	250

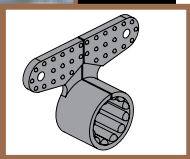


HOLDRITE SINGLE-NAIL CLAMPS – #181 - #183

- Ideal for clamp installation for Copper, PEX, and CPVC tubing
- Pre-installed nail for quick installation
- Tubing size up to 1"



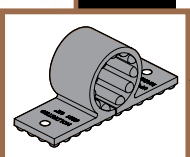
Model#	For Pipe Size(s)	Bag Qty	Master Carton Qty
181	1/2" CTS	100	1000
182	3/4" CTS	50	500
183	1" CTS	25	250



HOLDRITE SUSPENSION CLAMPS – #221 - #226

- Ideal for Copper, PEX, and CPVC tubing
- Mounts directly on HOLDRITE STOUT BRACKET or other surfaces
- Tubing size up to 2"

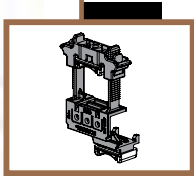
Model#	Clamp Size	For Pipe Size(s)	Box Qty
221	1-7/8" X 1-1/2"	1/2" CTS	100
222	1-7/8" X 1-3/4"	3/4" CTS	100
223	2-3/8" X 2-1/8"	1" CTS	50
224	2-7/8" X 2-3/8"	1-1/4" CTS	25
225	2-7/8" X 2-3/4"	1-1/2" CTS	25
226	3-3/8" X 3-1/8"	2" CTS	25



HOLDRITE STANDARD CLAMPS – #231 - #236

- Ideal for Copper, PEX, and CPVC tubing
- Mounts directly on HOLDRITE STOUT BRACKET or other surfaces

Model#	Clamp Size	For Pipe Size(s)	Box Qty
231	2" X 7/8"	1/2" CTS	100
232	2-3/8" X 2-1/8"	3/4" CTS	100
233	2-3/4" X 2-1/2"	1" CTS	50
234	2-3/4" X 1-3/4"	1-1/4" CTS	25
235	3-1/8" X 2"	1-1/2" CTS	25
236	3-1/2" X 2-1/2"	2" CTS	25



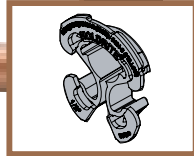
HOLDRITE RAPID – #251

- Mounts directly to #170 Bracket
- No tools required to install clamp
- Variable closure clamp supports up to 1" CTS



Model#	Clamp Size	For Pipe Size(s)	Bag Qty
#251	2-3/8" x 2-3/4"	1/2", 3/4", 1" CTS	50

NEW



HOLDRITE ISOLATORS – #424 - #426

- Ideal for metal thru-stud applications and integrates with HOLDRITE #121 and #125 series brackets
- Positioning and dissimilar metal isolation for Copper, CPVC, and PEX tubing
- Meets UL 94 HB requirements
- #424-C - #426-C are ABS and glueable with CPVC tubing



Model#	Hole Size	Pipe Size	Bag Qty	Master Carton Qty
424	1-11/32" & 1-3/8"	1/2" CTS	50	250
425	1-11/32" & 1-3/8"	3/4" CTS	50	250
426	1-11/32" & 1-3/8"	1" CTS	50	250
424-C	1-11/32" & 1-3/8"	1/2" CTS	50	250
425-C	1-11/32" & 1-3/8"	3/4" CTS	50	250
426-C	1-11/32" & 1-3/8"	1" CTS	50	250

Flame-Rated Isolators

HOLDRITE ISOLATORS –

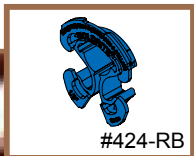
#424-RB - #426-RB, #424-RR - #426-RR

- Ideal for metal thru-stud applications and integrates with HOLDRITE #121 and #125 series brackets
- Positioning and dissimilar metal isolation for Copper, CPVC, and PEX tubing
- Meets UL 94 V-2 requirements

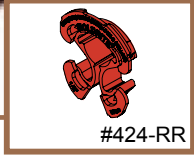


Model#	Hole Size	Pipe Size	Bag Qty	Master Carton Qty
424-RB	1-11/32" & 1-3/8"	1/2" CTS	50	250
425-RB	1-11/32" & 1-3/8"	3/4" CTS	50	250
426-RB	1-11/32" & 1-3/8"	1" CTS	50	250
424-RR	1-11/32" & 1-3/8"	1/2" CTS	50	250
425-RR	1-11/32" & 1-3/8"	3/4" CTS	50	250
426-RR	1-11/32" & 1-3/8"	1" CTS	50	250

NEW



#424-RB



#424-RR

Blue – Cold lines

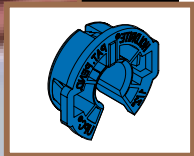
Red – Hot lines

HOLDRITE ISOLATORS – #404-R - #406-R

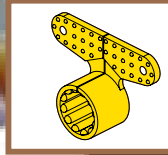
- Ideal for metal studs with Copper, PEX, and CPVC tubing
- Meets UL 94 V-2 requirements
- Compatible with #103, #121, #125, and #110-R series brackets
- Tubing size up to 1" (1-3/8" or 1-11/32" holes)



Model#	Hole Needed	For Pipe Size(s)	Box Qty
404-R	1-3/8" Diameter	1/2" CTS	100
405-R	1-3/8" Diameter	3/4" CTS	100
406-R	1-3/8" Diameter	1" CTS	100



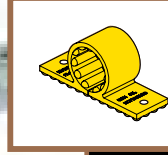
Smoke & Flame-Rated Isolators & Clamps
Meets ASTM E84 25/50 and UL 94 V-0 requirements



HOLDRITE SUSPENSION CLAMPS – #221-S - #222-S

- Ideal for CPVC, Copper, and PEX tubing
- Meets ASTM E84 25/50 and UL 94 V-0 requirements (Plenum-rated)

Model#	Clamp Size	For Pipe Size(s)	Bag Qty
221-S	1-7/8" X 1-1/2"	1/2" CTS	100
222-S	1-7/8" X 1-3/4"	3/4" CTS	100

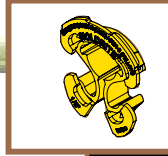
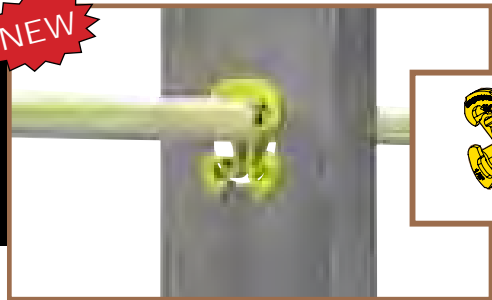


HOLDRITE STANDARD CLAMPS – #231-S - #232-S

- Ideal for CPVC, Copper, and PEX tubing
- Meets ASTM E84 25/50 and UL 94 V-0 requirements (Plenum-rated)

Model#	Clamp Size	For Pipe Size(s)	Bag Qty
231-S	2" X 7/8"	1/2" CTS	100
232-S	2-3/8" X 2-1/8"	3/4" CTS	100

NEW

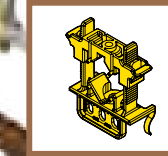
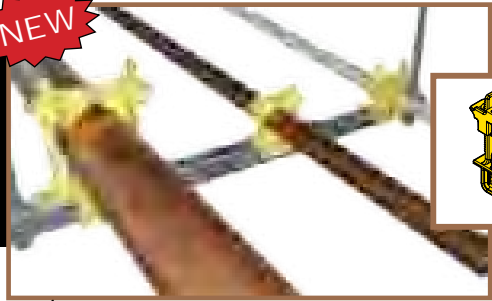


HOLDRITE ISOLATORS – #424-S - #426-S

- Ideal for metal thru-stud applications
- Integrates with HOLDRITE #121 and #125 series brackets
- Positioning and dissimilar metal isolation for Copper, CPVC, and PEX tubing
- Meets ASTM E84 25/50 and UL 94 V-0 requirements (Plenum-rated)

Model#	Hole Size	Pipe Size	Bag Qty	Master Carton Qty
424-S	1-11/32" & 1-3/8"	1/2" CTS	25	250
425-S	1-11/32" & 1-3/8"	3/4" CTS	25	250
426-S	1-11/32" & 1-3/8"	1" CTS	25	250

NEW

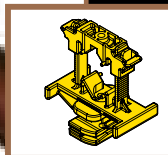


HOLDRITE CLAMPS – #250-S, #280-S

- Ideal for securing tubing to EZ-Strut trapeze/Stout platform
- Meets ASTM E84 25/50 and UL 94 V-0 requirements (Plenum-rated)
- Supports 3/8" to 2" tubing/piping with load rating of up to 300 pounds

Model#	Size	For Pipe Size(s)	Box Qty
250-S	2-3/8" X 2-5/8"	3/8" to 1" CTS	50
280-S	4-3/8" X 5-1/8"	1" to 2" CTS/IPS	50

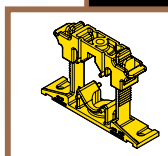
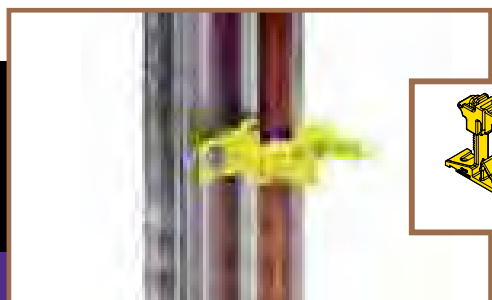
NEW



HOLDRITE STRUT CLAMPS – #257-S, 287-S

- Ideal for securing Copper, PEX, CPVC, and gas tubing directly to strut/channel
- No tools required and eliminates need for over 20 strut clamp SKUs
- Supports 3/8" to 2" tubing/piping with load rating of up to 300 pounds
- Meets ASTM E84 25/50 and UL 94 V-0 requirements (Plenum-rated)

Model#	Size	For Pipe Size(s)	Box Qty
257-S	2-1/2" x 2-7/8"	3/8" - 1" CTS	50
287-S	3-1/2" x 4-7/8"	1" - 2" CTS/IPS	50







HOLDRITE CLAMPS – #255-S, #285-S

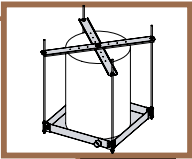
- Compatible with Copper, PEX, CPVC, iron pipe and other system materials
- Flat base, mounts directly to wood, metal, or other surfaces
- Meets ASTM E84 25/50 and UL 94 V-0 requirements (Plenum-rated)
- Variable closure clamp supports up to 2" pipe sizes, with load ratings up to 300 lbs.

Model#	Clamp Size	For Pipe Size(s)	Box Qty
255-S	2-7/8" X 2"	3/8" - 1" CTS	50
285-S	4-3/8" X 4"	1" - 2" CTS/IPS	50

WATER HEATER & EQUIPMENT Support Solutions



			
MODEL	IAPMO LISTED	CITY OF L.A. APPROVED	CALIFORNIA ACCEPTED
QUICK STRAP-50	✓	✓	✓
QUICK STRAP-50-D	✓	✓	✓
QUICK BELT-50-F	✓	✓	✓
QUICK STRAP-50-P	✓	✓	✓
QUICK STRAP-120	✓	✓	✓



QUICK STAND – #40-SWHP, #50-SWHP

- CEILING MOUNT
- **Cross Braces** for seismic requirements
- **1" PVC drain fitting (MIP/Socket)**
- #40-SWHP supports up to 20 gallons or 375 lbs.
- #50-SWHP supports up to 50 gallons or 600 lbs.

Model#	Drain Pan Size	Box Qty	Pallet Qty
40-SWHP	21-1/4" x 21-1/4"	1	10
50-SWHP	26-1/2" x 26-1/2"	1	10

NEW



QUICK STAND – #40-SWHP-A, #50-SWHP-A

- CEILING MOUNT
- **No Cross Braces**
- **1" PVC drain fitting (MIP/Socket)**
- #40-SWHP-A supports up to 20 gallons or 375 lbs.
- #50-SWHP-A support up to 50 gallons or 600 lbs.

Model#	Drain Pan Size	Box Qty	Pallet Qty
40-SWHP-A	21-1/4" x 21-1/4"	1	10
50-SWHP-A	26-1/2" x 26-1/2"	1	10

NEW



QUICK STAND – #40-SWHP-M, #50-SWHP-M

- CEILING MOUNT
- **No Cross Braces**
- **1" Metal drain fitting**
- #40-SWHP-M supports up to 20 gallons or 375 lbs.
- #50-SWHP-M support up to 50 gallons or 600 lbs.

Model#	Drain Pan Size	Box Qty	Pallet Qty
40-SWHP-M	21-1/4" x 21-1/4"	1	10
50-SWHP-M	26-1/2" x 26-1/2"	1	10

NEW



QUICK STAND – #40-SWHP-W, #50-SWHP-W

- WALL MOUNT
- **1" PVC drain fitting (MIP/Socket)**
- #40-SWHP-W supports up to 20 gallons or 375 lbs.
- #50-SWHP-W support up to 50 gallons or 600 lbs.

Model#	Drain Pan Size	Box Qty	Pallet Qty
40-SWHP-W	21-1/4" x 21-1/4"	1	10
50-SWHP-W	26-1/2" x 26-1/2"	1	10

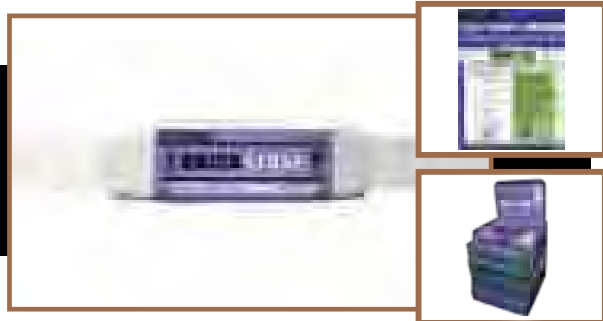
NEW



QUICK STAND – #40-SWHP-WM, #50-SWHP-WM

- WALL MOUNT
- **1" Metal drain fitting**
- #40-SWHP-WM supports up to 20 gallons or 375 lbs.
- #50-SWHP-WM supports up to 50 gallons or 600 lbs.

Model#	Drain Pan Size	Box Qty	Pallet Qty
40-SWHP-WM	21-1/4" x 21-1/4"	1	10
50-SWHP-WM	26-1/2" x 26-1/2"	1	10



QUICK STRAP® DELUXE – #QS-50-D

- The most tested and recognized water heater restraint
- Powder-coated steel water heater strap with (2) safety caps
- Supports up to 80 gallon water heaters
- Customized label available with your company name

Model#	Size	Box Qty	Pallet Qty
QS-50-D	Up to 80 gal.	15	120

Model#	Size	Kit Qty	6 Pak Qty	Case Qty
QS-50-D6	Up to 80 gal.	1	6	24



QUICK STRAP® – #QS-50, #QS-50-P

- The most tested and recognized water heater restraint
- Galvanized water heater strap in box
- Supports up to 80 gallon water heaters

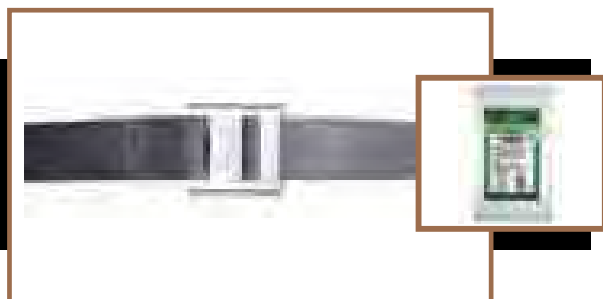
Model#	Size	Qty	Pallet Qty
QS-50	Up to 80 gal.	15/Box	120
QS-50-P	Up to 80 gal.	15/Bag	180



QUICK STRAP® – #QS-120

- The most tested and recognized water heater restraint
- Galvanized water heater strap in box
- Supports up to 120 gallon water heaters

Model#	Size	Box Qty	Pallet Qty
QS-120	Up to 120 gal.	12	60



QUICK BELT® – #QB-50-F

- The most tested and recognized water heater restraint
- Soft-belt style water heater strap
- #QB-50-F supports up to 80 gallon water heaters

Model#	Size	Box Qty	Pallet Qty
QB-50-F	Up to 80 gal.	20	120



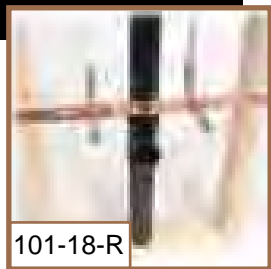
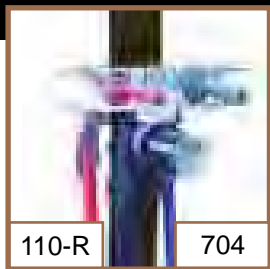
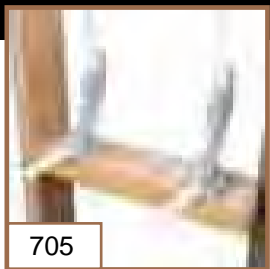
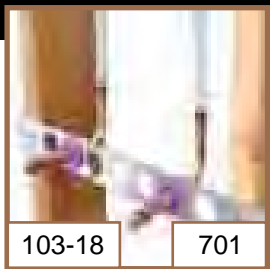
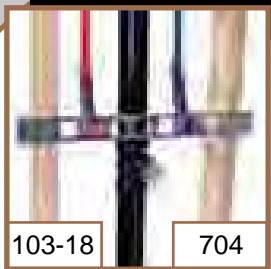
QUICK STAND –

#40-S-22-U, #40-S-22-A, #40-S-24-U, #40-S-24-A

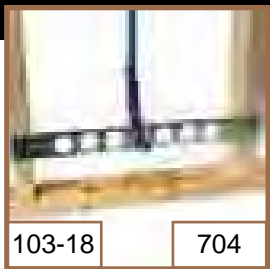
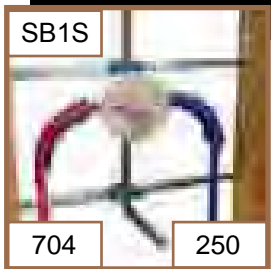
- Water heater stand, both assembled and unassembled
- Galvanized steel construction
- “-U” models are unassembled, “-A” models are pre-assembled

Model#	Size	Box Qty	Pallet Qty
40-S-22-U	Up to 52 gal. / 650 lbs.	1	24
40-S-22-A	Up to 52 gal. / 650 lbs.	1	24
40-S-24-U	Up to 100 gal. / 1,200 lbs.	1	18
40-S-24-A	Up to 100 gal. / 1,200 lbs.	1	18

SINK / LAVATORY

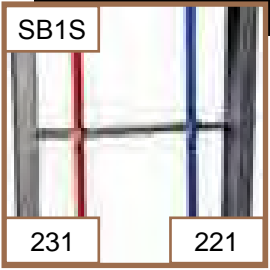
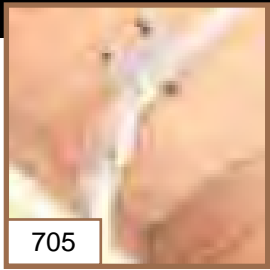
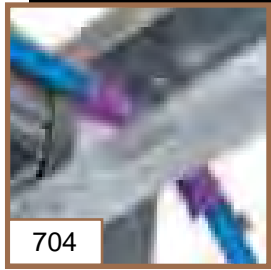


TUB / SHOWER



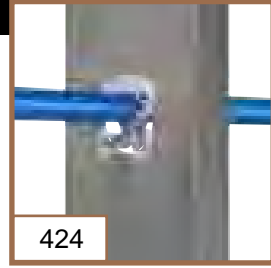
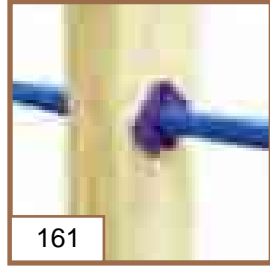
WATER CLOSET

OVERHEAD

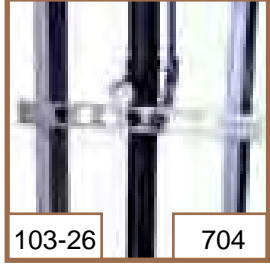


VERTICAL

THRU-STUD



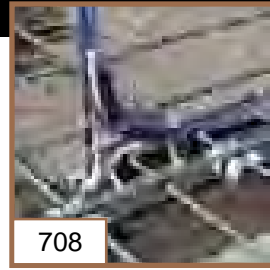
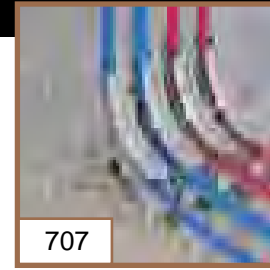
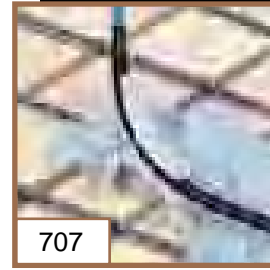
DRINKING FOUNTAIN



RADIANT HEATING



IN-SLAB / GROUND WORK



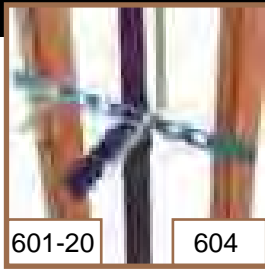
CPVC

Quick Search by Application

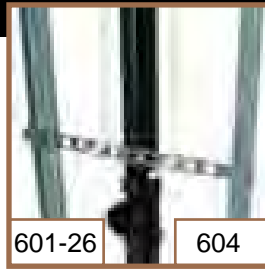
SINK / LAVATORY



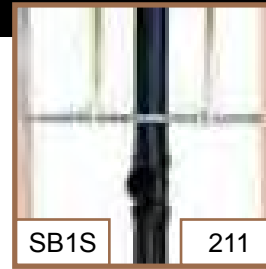
701



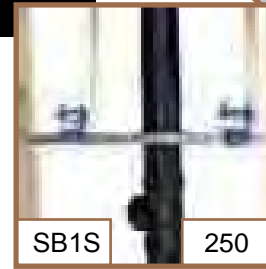
604



604

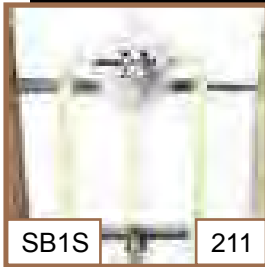


211

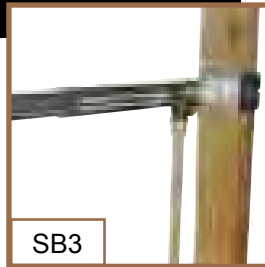


250

TUB / SHOWER



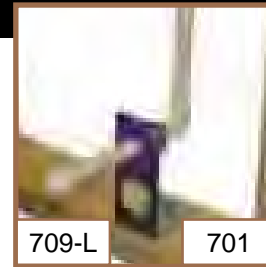
211



WATER CLOSET



604



701



424-C

OVERHEAD



211



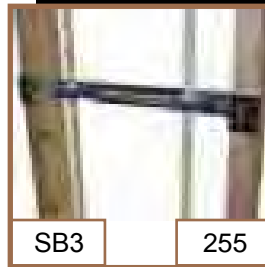
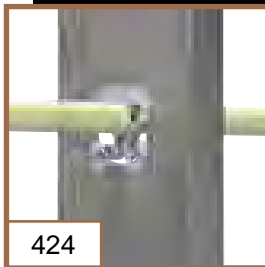
424-RB

424-RR

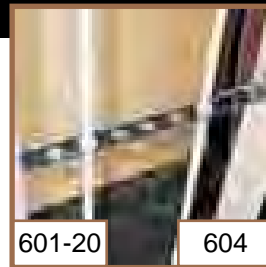


404-R

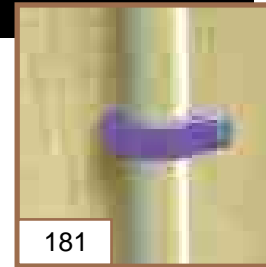
THRU-STUD / JOIST



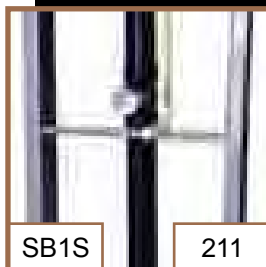
255



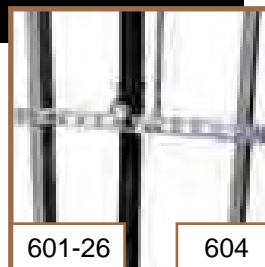
604



DRINKING FOUNTAIN

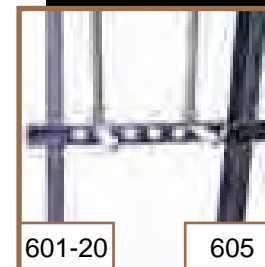


211

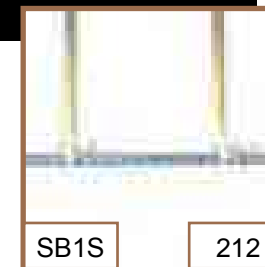


604

WATER HEATER



605

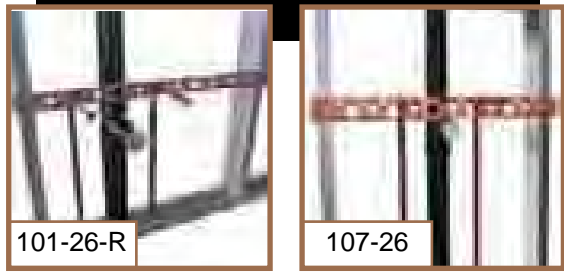


212

SINK / LAVATORY



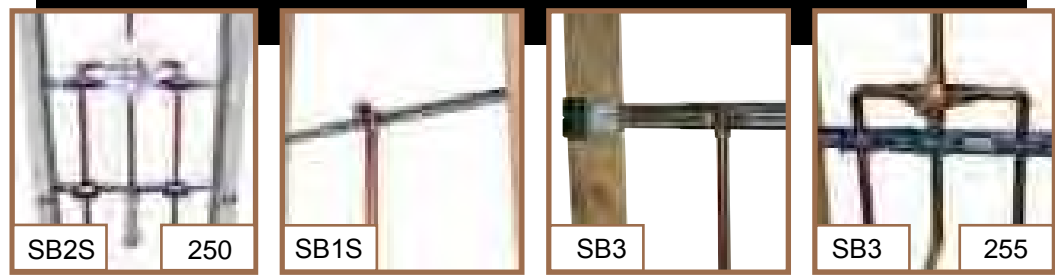
SINK / LAVATORY



WATER CLOSET



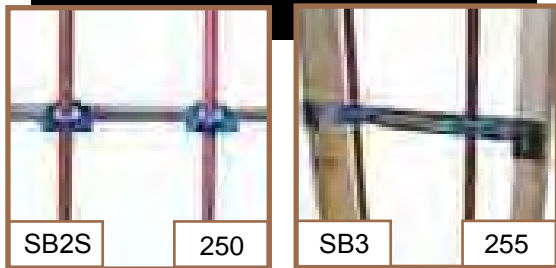
TUB / SHOWER



URINAL



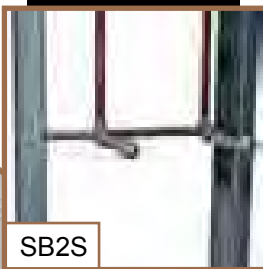
VERTICAL



WATER HEATERS



MOP SINK



DRINKING FOUNTAIN



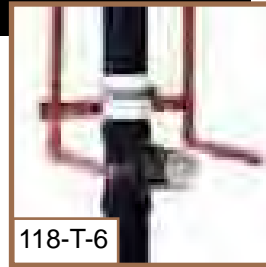
THRU-STUD



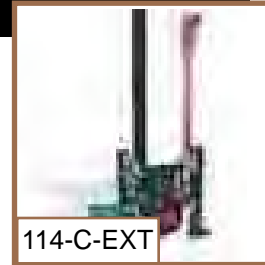
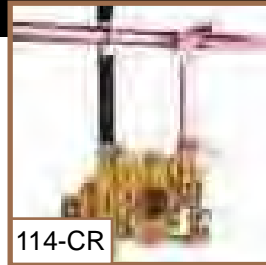
PRE-FAB & SPECIALITY BRACKETS

Quick Search by Application

SINK / LAVATORY

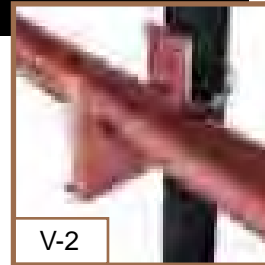
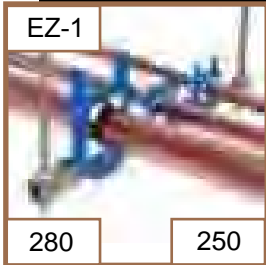


WATER CLOSET / CARRIER

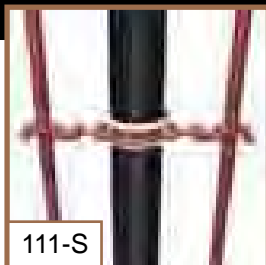


OVERHEAD

HORIZONTAL



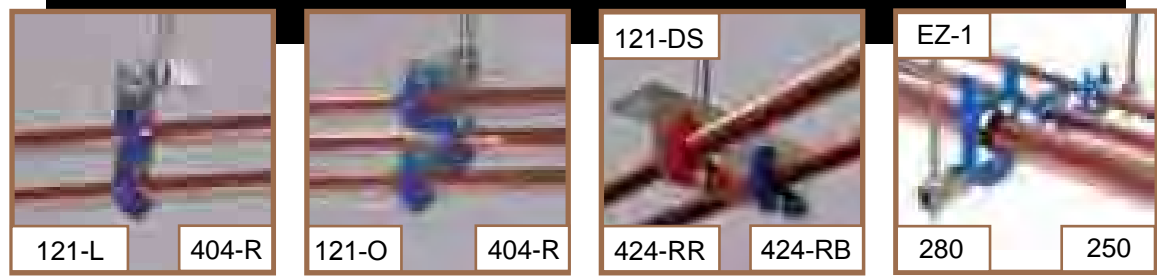
VERTICAL



VERTICAL / HORIZONTAL RESTRAINT



MULTIPLE RUN



MULTIPLE RUN



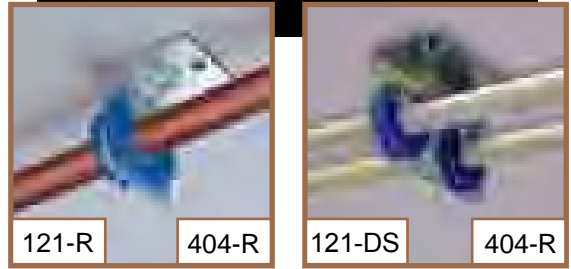
CAST-IN-PLACE



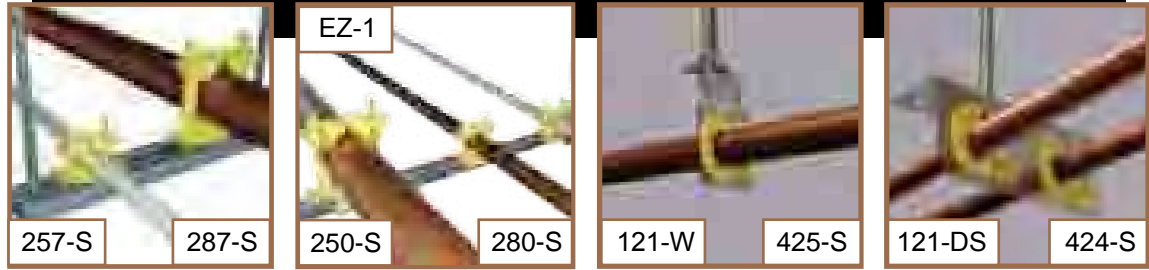
LOW and GO RUNS



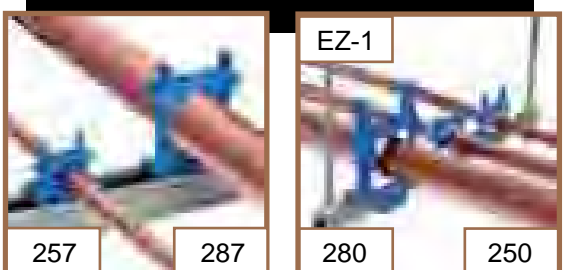
HIGH & TIGHT RUNS



PLENUM



MEDICAL GASES



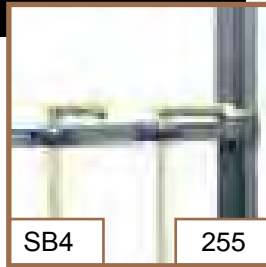
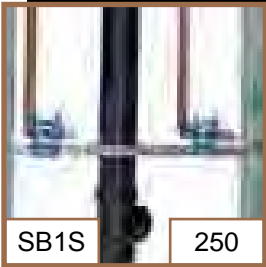
FUEL GASES



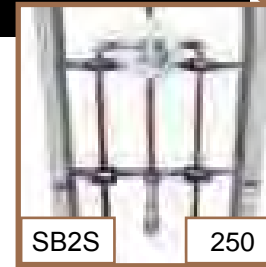
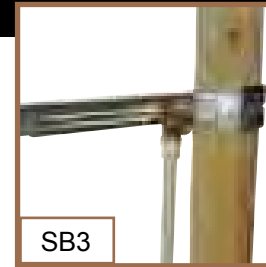
TELESCOPING

Quick Search by Application

SINK / LAVATORY



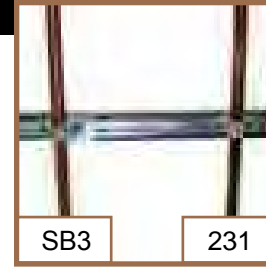
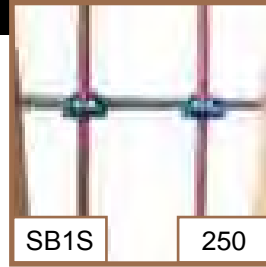
TUB / SHOWER



WATER CLOSET



VERTICAL / HORIZONTAL



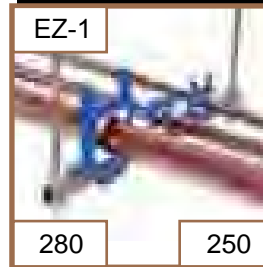
OVERHEAD



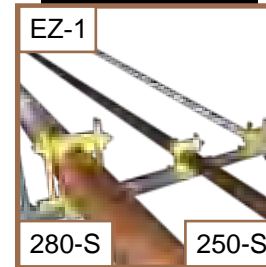
FUEL GAS



MEDICAL GASES



PLENUM



TELESCOPING LOADING DATA (max load)

HOLDRITE® EZ-STRUT™

Beam Span	Model#	Uniform Load	Center Pt. Load
12"	EZ-1	1100	1000
18"	EZ-1	510	500
21"	EZ-1	360	360
23"	EZ-2	600	400
30"	EZ-2	534	400
36"	EZ-2	175	160
40"	EZ-2	153	120

Based on single beam condition

HOLDRITE STOUT BRACKET®

Beam Span	Model#	Center Pt. Load
10"	SB1	400
10-1/4"	SB3	863
14-1/2"	SB1	164
	SB3	480
16"	SB3	322
	SB4	550
18"	SB1	104
	SB2	158
22-1/2"	SB2	124
	SB4	271
24"	SB2	68
	SB4	228

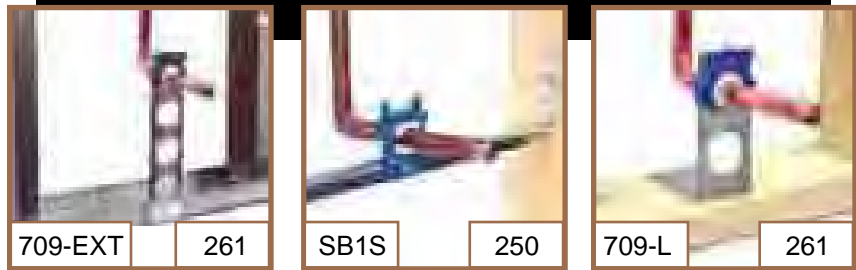
SINK / LAVATORY



TUB / SHOWER



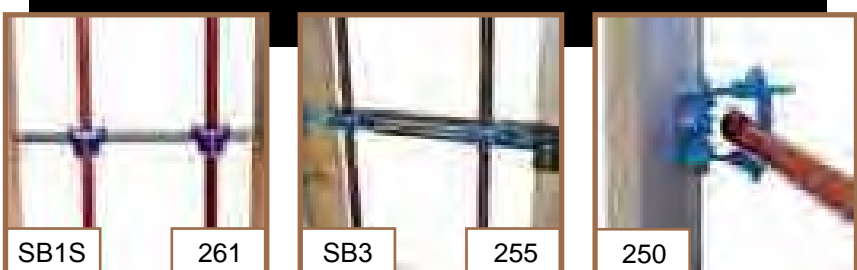
WATER CLOSET



THRU-STUD / JOIST



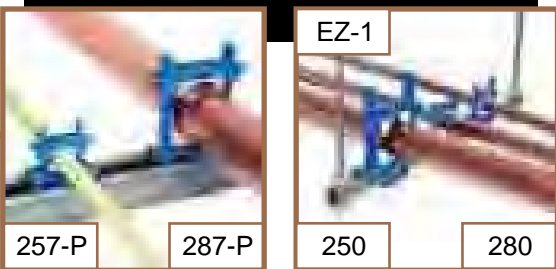
HORIZONTAL / VERTICAL



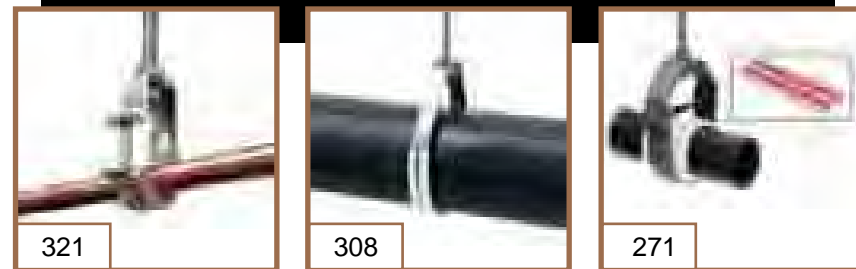
RISER CLAMPS



OVERHEAD



J / LOOP / CLEVIS HANGERS



Hubbard Enterprises/HOLDRITE Material "Take-off" Sheet and 2009 Catalog Page # Locator

Job Name _____	Date _____	P.O. # _____
Co. Name _____	Estimate# _____	
Address _____	Phone _____	
Contact _____		

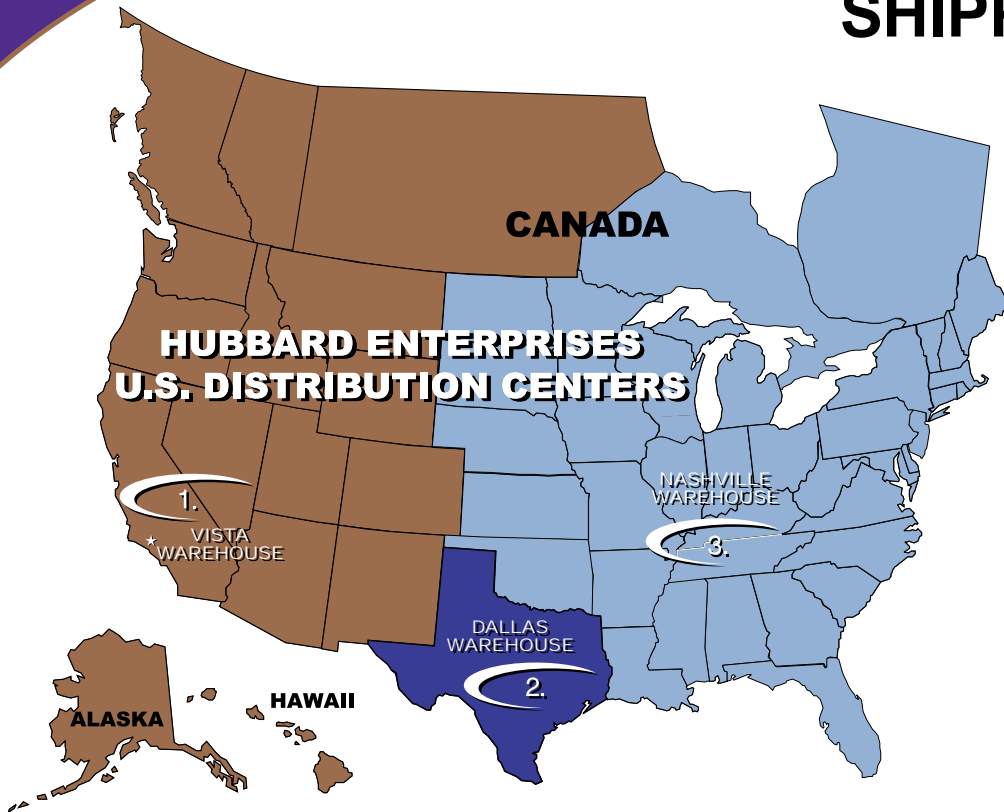
MODEL #	QTY	DESCRIPTION	BOX QTY	CATALOG PAGE #
100-18		20" flat, Copper-Bonded bracket positions 1/2" tubing with unique mfg. process and design	100	15
101-18		20" flat, Copper-Bonded bracket positions 1/2" tubing	50	15, 40
101-18R		20" extruded holes, Copper-Bonded bracket positions 1/2" tubing	25	9, 15, 38
101-26		26" flat, Copper-Bonded bracket positions 1/2" tubing	50	15
101-26R		26" extruded holes, Copper-Bonded bracket positions 1/2" or 3/4" tubing	25	9, 15, 40
101-F		3" Copper-Bonded floor plate, supports one 1/2" tube	50	16
102-18		20" flat, Copper-Bonded bracket positions 3/4" or 1" tubing	50	15, 40
102-26		26" flat, Copper-Bonded bracket positions 1/2", 3/4" or 1" tubing	50	15, 40
103-18		20" flat, galvanized bracket with 1-3/8" keyed holes, positions 1/2" - 1" tubing	50	7, 8, 12, 38, 39, 44
103-26		26" flat, galvanized bracket with 1-3/8" keyed holes, positions 1/2" - 1" tubing	50	7, 8, 12, 38
104		1/2" plastic insert for use with #103 brackets	100	10, 19, 32, 41
105		3/4" plastic insert for use with #103 brackets	100	10, 32
106		1" plastic insert for use with #103 brackets	100	10, 32
107-18		20" flat, Copper-Bonded bracket positions 1/2", 3/4" or 1" tubing	50	15, 40
107-26		26" flat, Copper-Bonded bracket positions 1/2", 3/4", 1" or 1-1/4" tubing	50	15, 40
108-20		20" extruded holes, Copper-bonded bracket positions 1/2", 3/4" or 1" tubing	50	15
108-26		26" extruded holes, Copper-bonded bracket positions 1/2", 3/4" or 1" tubing	50	15
109-A-9		"L" bracket with six 1/2" extruded holes at 2-3/4", 4-1/2", 6", 7", 8" or 9"	50	16, 40
109-N-6		Copper-bonded steel bracket made to position 1/2" and 3/4" copper tubing	50	16, 40
110-R		Galvanized steel bracket for pipe-on-pipe support for 1/2", 3/4" or 1" tubing	50	8, 19, 38, 44
110-S-1/2		Copper-bonded bracket with 1/2" notches on 1" centers	50	18, 41
111-S		Copper-bonded bracket for 1/2" and 3/4" tubing	50	18, 41
114-C		Copper-bonded carrier bracket secures 1" flush valve stub out	6	19, 41
114-CEXT		Provides additional height of 8-1/2" to 25-1/2" for carrier brackets	6	19, 41
114-CO		Copper-bonded offset carrier bracket secures 1" flush valve stub out	6	19, 41
114-CR		Copper-bonded carrier bracket with 1-1/8" notch at the top	6	19, 41
115		Galvanized steel bracket secures 1/2" through 2" pipe	25	18, 41
115-C		Copper-bonded steel bracket secures 1/2" through 2" pipe	25	18, 41
117-3		Steel band with stainless steel clamps. 1-1/2" - 3" IPS. Ideal for cast iron DWV piping	5	18
117-6		Steel band with stainless steel clamps. 4" - 6" IPS. Ideal for cast iron DWV piping	5	18
117-8		Steel band with stainless steel clamps. 8" IPS. Ideal for cast iron DWV piping	5	18
117-3D		Steel band w/ stainless steel clamps. 1-1/2" - 3" IPS. Diagnol support-cast iron DWV piping	5	18
117-6D		Steel band w/ stainless steel clamps. 4" - 6" IPS. Diagnol support-cast iron DWV piping	5	18
117-8D		Steel band w/ stainless steel clamps. 8" IPS. Diagnol support-cast iron DWV piping	5	18
118-T6		Copper-bonded pipe on pipe support bracket- 1/2" & 3/4" (3/4" on 6" centers)	50	18, 41
118-T8		Copper-bonded pipe on pipe support bracket- 1/2" & 3/4" (3/4" on 8" centers)	50	18, 41
121		Galvanized steel bracket that supports one copper, PEX or CPVC tube	25	19, 41
121-D		Galvanized steel bracket that supports two lines of copper, PEX or CPVC tubing	25	22
121-DLS		Galvanized steel bracket that supports two lines of copper, PEX or CPVC tubing	25	22, 42
121-DS		Galvanized steel bracket that supports two lines of copper, PEX or CPVC tubing	25	22, 38, 39, 42
121-L		Galvanized steel bracket that supports two lines of copper, PEX or CPVC tubing	25	22, 42
121-O		Galvanized steel bracket that supports three lines of copper, PEX or CPVC tubing	25	23, 42
121-R		Galvanized steel bracket that supports one copper, PEX or CPVC tube	25	22, 42
121-RLS		Galvanized steel bracket that supports one copper, PEX or CPVC tube	50	22
121-W		Galvanized steel bracket that supports one copper, PEX or CPVC tube	25	22, 42
125		Concrete Insert Bracket with 121-R and 121-W Centerlines	50	23, 42
125-D		Concrete Insert Bracket with 121-D Centerlines	50	23, 42
130		Single solid copper clip for 1/2" tube	100	16
131		Single solid copper clip for 3/4" tube	100	16
132		Single solid copper clip for 1" tube	100	16
140		20" Copper-bonded bracket with extruded notches for 1/2" or 3/4" tubing	50	16, 40
141		20" Copper-bonded 90° bracket with extruded notches for 1/2" or 3/4" tubing	50	16
150-20		20" flat, Copper-bonded bracket positions 1/2" or 3/4" tubing	50	16, 40
150-26		26" flat, Copper-bonded bracket positions 1/2" or 3/4" tubing	50	16, 40
161		Plastic thru-stud isolator (1/2" CTS)	50	32, 38, 39, 40
162		Plastic thru-stud isolator (3/4" CTS)	50	32
163		Plastic thru-stud isolator (1" CTS)	25	32
170		18" 90° galvanized steel bracket	50	16
170-251		18" galvanized brackets and #251 variable closure clamps (BULK PACKAGING)	25/50	13
170-C		18" 90° Copper-bonded bracket	50	16
170-S		18" 90° galvanized steel bracket with two screws	50	16
181		Plastic single nail clamp (1/2" CTS)	100	32, 38, 39
182		Plastic single nail clamp (3/4" CTS)	50	32
183		Plastic single nail clamp (1" CTS)	25	32
201		Strong quick-closing plastic clamp for single 1/2" tube	50	26
202		Strong quick-closing plastic clamp for single 3/4" tube	50	26

Model#	QTY	DESCRIPTION	BOX QTY	CATALOG PAGE #
211		Half moon, fire retardant PVC Clamp for 1/2" tube, UL94V0	100	13, 39, 42, 43
212		Half moon, fire retardant PVC Clamp for 3/4" tube, UL94V0	100	13, 39
221		1/2" Suspension tube clamp	100	13, 33, 38, 39, 43
222		3/4" Suspension tube clamp	100	13, 33
221-S		1/2" Suspension tube clamp; meets ASTM E-84 25/50	100	34
222-S		3/4" Suspension tube clamp; meets ASTM E-84 25/50	100	34
223		1" Suspension tube clamp	50	13, 33
224		1-1/4" Suspension tube clamp	25	13, 33
225		1-1/2" Suspension tube clamp	25	13, 33
226		2" Suspension tube clamp	25	13, 33
231		1/2" Standard tube clamp	100	13, 33, 38, 43
232		3/4" Standard tube clamp	100	13, 33, 43
231-S		1/2" Standard tube clamp; meets ASTM E-84 25/50	100	34
232-S		3/4" Standard tube clamp; meets ASTM E-84 25/50	100	34
233		1" Standard tube clamp	50	13, 33
234		1-1/4" Standard tube clamp	25	13, 33
235		1-1/2" Standard tube clamp	25	13, 33
236		2" Standard tube clamp	25	13, 33
250		Sound rated variable closure clamp. Supports up to 1" CTS sizes.	50	21, 25, 28, 39, 40, 41, 42, 43, 44
250-S		Variable closure clamp-supports up to 1" CTS sizes; meets ASTM E-84 25/50	50	21, 34, 41, 42, 43
251		Variable closure clamp support up to 1" CTS. Mounts to #170 bracket with no tools/hardware	50	32
255		Acoustical standard clamp - supports up to 1" CTS sizes	50	29, 39, 40, 43, 44
255-S		Standard clamp - supports up to 1" CTS sizes; meets ASTM E-84 25/50	50	34
257		Variable size strut clamp. Supports up to 1" CTS	50	21, 42
257-P		Sound rated variable size strut clamp. Supports up to 1" CTS	50	21, 29, 44
257-S		Variable size strut clamp. Supports up to 1" CTS. ASTM E84 25/50 & UL 94 V-0 rated	50	34, 42
261		1/2" Acoustical thru stud isolator/suspension clamp	50	29, 44
262		3/4" Acoustical thru stud isolator/suspension clamp	50	29
263		1" Acoustical thru stud isolator/suspension clamp	50	29, 44
264		1-1/4" Acoustical thru stud isolator/suspension clamp	50	29
265		Shower head acoustic anchor, mounts on Holdrite Stout Bracket to minimize noise & vibration	50	28, 44
270		3/4" Wide acoustical sound insulation lining	50' roll	30
271		2" wide neoprene acoustical noise insulation liner with adhesive backing	25' roll	30, 44
272-2		2" X 1/4" polyester felt. Acoustical noise insulation w/adhesive backing (12 rolls per case)	25' roll	30, 44
274		2" X 2" X 3/4" acoustical riser clamp pad (36 pads/sheet and 5 sheets/box = 180 pads)	180	30, 44
275		2" X 2" X 3/4" acoustical riser clamp pad w/ 10-gage galv steel bearing plate	144	30, 44
275-T		2" X 2" X 3/4" acoustical riser clamp pad w/ 10-gage galv steel bearing plate & vertical tabs	144	30, 44
276		2" X 2" X 1/4" acoustical riser clamp pad	50	30, 44
278		2" X 2" X 1/4" acoustical riser clamp pad w/ 10 gage galv steel bearing plate	50	30, 44
280		Sound rated variable closure clamp. Supports up to 2" CTS/IPS pipe sizes	50	21, 25, 28, 41, 42, 43, 44
280-S		Variable closure clamp. Supports pipe up to 2" CTS/IPS. ASTM E84 25/50 & UL 94 V-0 rated	50	21, 34, 41, 42, 43
285		Sound rated variable closure clamp. Supports up to 2" CTS/IPS pipe sizes	50	29,
285-S		Variable clamp mounts to flat surface. 1" to 2" CTS/IPS. ASTM E84 25/50 & UL 94 V-0 rated	50	34
287		Variable size strut clamp. Supports up to 1"-2" CTS/IPS. ASTM E84 25/50 & UL 94 V-0 rated	50	21, 42
287-S		Variable size strut clamp. Supports up to 1"-2" CTS/IPS. ASTM E84 25/50 & UL 94 V-0 rated	50	21, 34, 42
287-P		Sound rated variable size strut clamp. Supports up to 1"-2" CTS/IPS pipe sizes	50	21, 29, 44
300		Galvanized steel loop hanger with swivel nut and acoustical rubber liner. 1/2" CTS.	100	23, 30
301		Galvanized steel loop hanger with swivel nut and acoustical rubber liner. 1/2" IPS & 3/4" CTS.	100	23, 30
302		Galvanized steel loop hanger with swivel nut and acoustical rubber liner. 3/4" IPS & 1" CTS.	100	23, 30
303		Galvanized steel loop hanger with swivel nut and acoustical rubber liner. 1" IPS & 1-1/4" CTS.	100	23, 30
304		Galvanized steel loop hanger with swivel nut and acoustical rubber liner. 1-1/4"-1-1/2" IPS & 1-1/2" CTS.	100	23, 30
306		Galvanized steel loop hanger with swivel nut and acoustical rubber liner. 2" IPS & 2" CTS.	100	23, 30
307		Galvanized steel loop hanger with swivel nut and acoustical rubber liner. 2-1/2" IPS & 2-1/2" CTS.	50	23, 30
308		Galvanized steel loop hanger with swivel nut and acoustical rubber liner. 3" IPS & 3" CTS.	50	23, 30, 44
310		Galvanized steel loop hanger with swivel nut and acoustical rubber liner. 4" IPS & 4" CTS.	25	23, 30
320		Galvanized steel J-hanger with acoustical rubber liner. 1/2" CTS.	50	23, 30
321		Galvanized steel J-hanger with acoustical rubber liner. 1/2" IPS & 3/4" CTS.	50	23, 30, 44
322		Galvanized steel J-hanger with acoustical rubber liner. 3/4" IPS & 1" CTS.	50	23, 30
323		Galvanized steel J-hanger with acoustical rubber liner. 1" IPS & 1-1/4" CTS.	50	23, 30
324		Galvanized steel J-hanger with acoustical rubber liner. 1-1/4" IPS & 1-1/2" CTS.	50	23, 30
325		Galvanized steel J-hanger with acoustical rubber liner. 1-1/2" IPS & 2" CTS.	50	23, 30
326		Galvanized steel J-hanger with acoustical rubber liner. 2" IPS & 2-1/2" CTS.	50	23, 30
327		Galvanized steel J-hanger with acoustical rubber liner. 2-1/2" IPS & 3" CTS.	25	23, 30
328		Galvanized steel J-hanger with acoustical rubber liner. 3" IPS.	25	23, 30
330		Galvanized steel J-hanger with acoustical rubber liner. 4" IPS & 4" CTS.	25	23, 30
40-S-22-A		22" Water heater stand, assembled, supports up to 52 gallons/650 lbs.	1	37
40-S-22-U		22" Water heater stand, unassembled, supports up to 52 gallons/650 lbs.	1	37
40-S-24-A		24" Water heater stand, assembled, supports up to 100 gallons/1,200 lbs.	1	37
40-S-24-U		24" Water heater stand, unassembled, supports up to 100 gallons/1,200 lbs.	1	37

Hubbard Enterprises/HOLDRITE Material "Take-off" Sheet and 2009 Catalog Page # Locator (Cont.)

Model#	QTY	DESCRIPTION	BOX QTY	CATALOG PAGE #
40-SWHP		Ceiling Mount. Cross Braces. 1" PVC fitting. Suspended Platform (21-1/4" diameter)	1	36
40-SWHP-A		Ceiling Mount. No Cross Braces. 1" PVC fitting. Suspended Platform (21-1/4" diameter)	1	36
40-SWHP-M		Ceiling Mount. No Cross Braces. 1" Metal fitting. Suspended Platform (21-1/4" diameter)	1	36
40-SWHP-W		Wall Mount. No Cross Braces. 1" PVC fitting. Suspended Platform (21-1/4" diameter)	1	36
40-SWHP-WM		Wall Mount. No Cross Braces. 1" Metal fitting. Suspended Platform (21-1/4" diameter)	1	36
50-SWHP		Ceiling Mount. Cross Braces. 1" PVC fitting. Suspended Platform (26-1/2" diameter)	1	36
50-SWHP-A		Ceiling Mount. No Cross Braces. 1" PVC fitting. Suspended Platform (26-1/2" diameter)	1	36
50-SWHP-M		Ceiling Mount. No Cross Braces. 1" Metal fitting. Suspended Platform (26-1/2" diameter)	1	36
50-SWHP-W		Wall Mount. No Cross Braces. 1" PVC fitting. Suspended Platform (26-1/2" diameter)	1	36
50-SWHP-WM		Wall Mount. No Cross Braces. 1" Metal fitting. Suspended Platform (26-1/2" diameter)	1	36
404-R		1/2" Fire retardant inserts that can be used as Metal Stud isolators, UL94V2	100	10, 33, 42
405-R		3/4" Fire retardant inserts that can be used as Metal Stud isolators, UL94V2	100	10, 33
406-R		1" Fire retardant inserts that can be used as Metal Stud isolators, UL94V2	100	10, 33
424		GREY 1/2" Isolator for metal thru-stud and #121/#125 series brackets. UL 94 HB rated	50	10, 13, 32, 38, 39, 40
424-RB		BLUE 1/2" Fire retardant isolators for metal thru-stud, #121/#125 brackets. UL 94 V-2 rated	50	33, 38, 39, 42
424-RR		RED 1/2" Fire retardant isolators for metal thru-stud, #121/#125 brackets. UL 94 V-2 rated	50	33, 38, 39, 42
424-S		YELLOW 1/2" Smoke/Fire rated isolator for #121/#125 brackets. ASTM E84 25/50 & UL 94 V-0	25	34, 42
425		GREY 3/4" Isolator for metal thru-stud and #121/#125 series brackets. UL 94 HB rated	50	10, 13, 32
425-RB		BLUE 3/4" Fire retardant isolators for metal thru-stud, #121/#125 brackets. UL 94 V-2 rated	50	33
425-RR		RED 3/4" Fire retardant isolators for metal thru-stud, #121/#125 brackets. UL 94 V-2 rated	50	33
425-S		YELLOW 3/4" Smoke/Fire rated isolator for #121/#125 brackets. ASTM E84 25/50 & UL 94 V-0	25	34, 42
426		GREY 1" Isolator for metal thru-stud and #121/#125 series brackets. UL 94 HB rated	50	10, 13, 32
426-RB		BLUE 1" Fire retardant isolators for metal thru-stud, #121/#125 brackets. UL 94 V-2 rated	50	33
426-RR		RED 1" Fire retardant isolators for metal thru-stud, #121/#125 brackets. UL 94 V-2 rated	50	33
426-S		YELLOW 1" Smoke/Fire rated isolator for #121/#125 brackets. ASTM E84 25/50 & UL 94 V-0	25	34
601-20		20" Galvanized steel bracket to support 1/2" & 3/4" CPVC tubing	50	12, 39
601-26		26" Galvanized steel bracket to support 1/2" & 3/4" CPVC tubing	50	12, 39
604		1/2" Grooved insert, CPVC compatible, 1" OD	100	12, 39
605		3/4" Grooved insert CPVC compatible, 1" OD	100	12, 39
609-N-6		18-gage galvanized steel bracket with 1" holes on 2" centers	50	12, 39
701		1/2" CTS stub out clamp for PEXRITE™ #103, #709, & #110 brackets. No Tools Required.	50	7, 12, 38, 39
701-0536P		(1) #701 and (1) 1/2" CTS 3-1/2" x 6" Copper Ell (preloaded)	25	8
701-0538P		(1) #701 and (1) 1/2" CTS 3-1/2" x 8" Copper Ell (preloaded)	25	8
701-PR		PEX-to-Copper Stub-out kit. (1) 103-18, (2) 701, (2) 1/2" CTS 3-1/2" x 6" Copper Ell	36	7
704		Turn out support for use with 1/2" or 3/8" PEX tubing	100	7, 38
704-PR		PEX Stub-out kit. (1) 103-18 and (2) 704 turn outs. 3/8" or 1/2" CTS PEX tubing.	36	7
705		Turn-out support for use with 1/2" or 3/8" PEX tubing. Mount directly to flat surface.	50	9, 38
706		Pop-up support for use w/ 1/2" or 3/8" PEX tubing. Ideal for Radiant Heating.	50	9, 38
707		In-slab, flexible tube support. Holds one tube up to 7/8" O.D.	25	9, 38
707-E		Single run POP-UP for flexible/rigid conduit or pipe. Tube sizes up to 1" O.D.	25	9
708		In-slab, flexible tube support. Holds up to two tubes, up to 1-1/8" O.D.	15	10, 38
708-E		Single/double run POP-UP for flexible/rigid conduit or pipe. Tube sizes 1/2" thru 2" O.D.	15	10, 38
709		Galvanized bracket with 1-3/8" keyed holes, 7-1/5" long for 1/2", 3/4", & 1" tubing	50	8, 38
709-EXT		Galvanized "L" bracket with 1-3/8" keyed holes at 2", 4", 6" and 8" for 1/2", 3/4", & 1" tubing	50	8, 38
709-L		Galvanized "L" bracket with 1-3/8" keyed holes for 1/2", 3/4", & 1" tubing	50	8, 38
721		Galvanized bracket 3.38" x 2.75" with keyed hole for 1/2", 3/4", & 1" tubing	50	8
EZ-1		EZ-Strut, Adjustable length trapeze from 12"-21"	25	21, 41, 42, 43, 44
EZ-2		EZ-Strut, Adjustable length trapeze from 23"-40"	25	21
Felt 100		2-1/4" X 1/8" polyester felt. Acoustical noise isolation lining with adhesive backing	100' roll	30
HR-RR-1		Sink/Toilet stub-out support kit. (1) SB1S bracket and (2) 250 clamps	36	26
HR-RR-2		Tub/Shower stub-out support kit. (3) SB1S brackets and (4) 250 clamps	36	26
HSS		Acoustical Shower head & diverter Kit. Includes (2) SB1S, (2) 261s, & (1) 265.	10	28
HSTS		Acoustical Shower Head & Tub/Shower Diverter Kit. Includes (3) SB1S, (3) 261s, & (2) 265.	10	28
QB-50-F		Seat belt style water heater straps, supports up to 80 gallons	20	37
QS-120		Galvanized water heater straps, supports up to 120 gallons	12	37
QS-50		Galvanized water heater straps, supports up to 80 gallons	15	37
QS-50-D		Powder coated water heater straps w/ 2 safety caps, supports up to 80 gal	15	37
QS-50-D6		Water Heater Support kit. Powder-coated water heater straps supports up to 80 gallons	24	37
QS-50-P		Galvanized water heater straps (in a bag), supports up to 80 gallons	15	37
SB1		Telescoping Stout bracket; 10" to 18" Span - no screws	50	25
SB1S		Telescoping Stout bracket; 10" to 18" Span - four screws	50	9, 13, 25, 28, 38, 39, 40, 42, 43, 44
SB1-2502		One telescoping Stout Bracket 10" to 18" - Two Stout Clamps - four screws	25	26
SB2		Telescoping Stout bracket; 13" to 25" Span - no screws	50	25
SB2S		Telescoping Stout bracket; 13" to 25" Span - four screws	50	9, 13, 25, 28, 40, 43, 44
SB2-2502		One Stout Bracket 13" to 25" - Two Stout Clamps - four screws	25	26
SB3		Wide telescoping Stout Bracket; 10-1/4" to 17-1/2" Span - no screws	50	12, 25, 39, 40, 43
SB4		Wide telescoping Stout Bracket; 13-1/4" to 25-1/2" Span - no screws	50	12, 25
SC-200		Box of 200 #8 X 1/2" self tapping, 1/4" hex head, Phillips screws	200	n/a
V-2		Copper-Bonded steel bracket designed to hold 1/2" to 3" pipes horizontally	25	19, 41

DISTRIBUTION & SHIPPING POLICY



1. 

West Coast Distribution Center
2560 Progress Street
Vista, CA 92081
Toll Free: (800) 321.0316
Fax: (760) 744.0507

2. 

Texas Distribution Center
Dallas, Texas
Toll Free: (800) 321.0316
Fax: (760) 744.0507

3. 

East Coast Distribution Center
Nashville, Tennessee
Toll Free: (800) 321.0316
Fax: (760) 744.0507

ADDITIONS AND CHANGES:

Orders normally ship within 24 hours. We make every effort to comply with your instructions. We will accept changes to orders; however, additional freight charges may be incurred.

PRODUCT RETURNS:

All returns must comply with the established guidelines below:

- (a) A Return Goods Authorization number is required. Any product received without our RGA number will be refused. **THE RGA IS VALID FOR 30 DAYS FROM ISSUE DATE.** Returns not received within 30 days will be refused.
- (b) Returns must be shipped freight prepaid back to distribution center.
- (c) All returned products must be (1) in full box quantities, (2) of current design and material, and (3) in saleable condition.
- (d) A credit memo will be issued against the Distributor's Net Price at the time of return, and will only be issued once quantities have been verified. Credit memos are only issued for full box quantities. Broken boxes, unsaleable material, specials or non-cataloged products will not be considered for credit.
- (e) **A 25% RESTOCKING FEE WILL BE CHARGED FOR ALL RETURNS.**
- (f) All product returns are subject to the above terms and conditions.

ERRORS & SHORTAGES:

Shipping errors (e.g. wrong sizes or shortages) must be reported within 15 days.

DAMAGE TO FREIGHT:

Any shipment that appears to be damaged in shipping must be noted when signing for receipt of delivery.

LIABILITY OF MISUSE:

HUBBARD ENTERPRISES will not be liable for damages to property or persons due to improper installation of material or through attempts to utilize the material under conditions which exceed the designed capabilities. Purchaser agrees to indemnify and hold us harmless for any and all claims, liabilities, damages, costs, and expenses asserted against us or incurred by us because of injuries to person or damages to property resulting from the improper installation or misuse of the material.