

SUBMITTAL SHEET

CPVC Fittings

CPVC pipe and fittings are used in corrosive resistant applications. CPVC resists mineral buildup and corrosion. Solvent weld joints provide easy installation.

Features:

- Solvent weld installation to CPVC pipe.
- Resistant to mineral buildup and corrosion.
- CPVC systems are accepted by all major building codes.
- Easy installation with solvent cement.

Specifications:

- 180 psi @ 73° F
- Made from chlorinated polyvinyl chloride.
- For use with CPVC pipe.
- For use with hot and cold water applications.

Approvals:

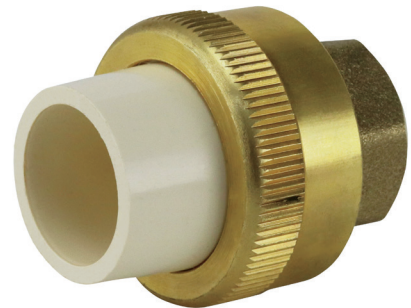
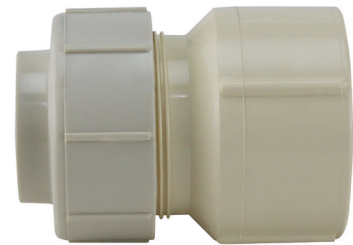
- ASTM D-2846
- ANSI/NSF 61

Installation:

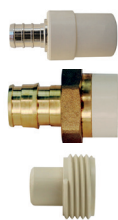
Squarely cut CPVC pipe to desired length. Remove rough edges and sand a slight bevel around the pipe edge. Make sure the pipe fits at least 2/3 of the way into the fitting before applying the solvent cement. Apply a primer per the manufacturer's instructions. Then, apply a heavy coat of solvent cement to the outside of the pipe. Next, apply a thin coat of solvent cement to the inside of the fitting. Make sure there are no drips. Immediately insert the pipe into the fitting. Verify the pipe goes all the way to the end of the fitting. Check the solvent cement manufacturer's instructions on cure times. After the solvent is gone, the joint is finished and ready for testing.

DO NOT overtighten threaded fittings.

Job Name:	
Job Location:	
Engineer:	
Contractor:	
Tag:	
PO Number:	
Representative:	



Adapters



Part Number	Description	H	W	D	Wt (lbs)	Carton Qty	UPC
APXCPVC12	1/2" PEX-B x 1/2" CPVC CTS Slip	2.31	1.19	1.19	0.09	10	670750570773
APXCPVC34	3/4" PEX-B x 3/4" CPVC CTS Slip	2.31	1.19	1.19	0.11	10	670750570780
EPXCPVC12	1/2" PEX-A x 1/2" CPVC CTS Slip	1.43	1.00	1.00	0.07	10	191988003784
EPXCPVC34	3/4" PEX-A x 3/4" CPVC CTS Slip	1.82	1.38	1.38	0.14	10	191988004064
CPVCBSP	1/2" CPVC CTS Slip x 3/4" GHT	1.02	1.05	1.05	0.02	10	850003465821

Drop Ears



Part Number	Description	H	W	D	Wt (lbs)	Carton Qty	UPC
CPVCDEE12	Drop Ear Elbow 1/2" CPVC CTS Slip x 1/2" Stainless Steel FNPT	2.50	2.38	1.50	0.14	25	850003465470
CPVCDEE12W	Drop Ear Elbow 1/2" CPVC CTS Slip x 1/2" FNPT	1.46	2.30	1.56	0.06	20	850003465838
CPVCDET12	Drop Ear Tee 1/2" CPVC CTS Slip	1.36	2.23	1.84	0.04	10	850003465845

Female Adapters



Part Number	Description	H	W	D	Wt (lbs)	Carton Qty	UPC
CPVCFA12	1/2" CPVC CTS Slip x 1/2" Stainless Steel FNPT	1.75	1.25	1.00	0.09	25	850003465418
CPVCFA34	3/4" CPVC CTS Slip x 3/4" Stainless Steel FNPT	1.88	1.38	1.25	0.14	25	850003465425
CPVCFA1	1" CPVC CTS Slip x 1" Stainless Steel FNPT	2.25	1.63	1.63	0.26	25	850003465432
CPVCFA12W	1/2" CPVC CTS Slip x 1/2" FNPT	1.36	1.15	1.15	0.03	75	850003465852
CPVCFA12W10PK	1/2" CPVC CTS Slip x 1/2" FNPT - 10 Pack	1.36	1.15	1.15	0.03	5	850003465814
CPVCFA34W	3/4" CPVC CTS Slip x 3/4" FNPT	1.54	1.35	1.35	0.04	50	850003465425
CPVCFA34W10PK	3/4" CPVC CTS Slip x 3/4" FNPT - 10 Pack	1.54	1.35	1.35	0.04	5	850003465890
CPVCFA1W	1" CPVC CTS Slip x 1" FNPT	1.88	1.64	1.64	0.07	10	850003465876
CPVCFA1U34	3/4" CPVC CTS Slip x 1" FNPT	2.21	1.68	1.68	0.11	6	850003465869

Male Adapters



Part Number	Description	H	W	D	Wt (lbs)	Carton Qty	UPC
CPVCMA12	1/2" CPVC CTS Slip x 1/2" Stainless Steel MNPT	1.75	1.25	1.00	0.09	25	850003465449
CPVCMA34	3/4" CPVC CTS Slip x 3/4" Stainless Steel MNPT	1.88	1.38	1.25	0.14	25	850003465456
CPVCMA1	1" CPVC CTS Slip x 1" Stainless Steel MNPT	2.50	1.63	1.63	0.26	25	850003465463
CPVCMU1234	1/2" CPVC CTS Slip x 3/4" Brass MNPT	2.05	1.20	1.20	0.18	6	850003465906

Unions



Part Number	Description	H	W	D	Wt (lbs)	Carton Qty	UPC
CPVCSWTU12	1/2" CPVC CTS Brass Slip x 1/2" Solder	1.44	1.21	1.21	0.11	10	850003465937
CPVCUC12	1/2" CPVC CTS Slip x 1/2" Brass Solder	2.31	1.20	1.20	0.21	6	850003465968
CPVCU12	1/2" CPVC CTS Slip	1.87	1.66	1.66	0.12	10	850003465944
CPVCU34	3/4" CPVC CTS Slip	2.23	1.95	1.95	0.17	10	850003465951

Valve



Part Number	Description	H	W	D	Wt (lbs)	Carton Qty	UPC
CPVCWMV	Washing Machine Angle Valve 1/2" CPVC CTS Slip x 3/4" GHT	2.53	1.12	2.21	0.09	8	850003465975

Pipe Straps



Part Number	Description	H	W	D	Wt (lbs)	Carton Qty	UPC
CPVCSTRAP12	1/2" - 5 Pack	1.60	0.82	0.82	0.003	25	850003465913
CPVCSTRAP34	3/4" - 5 Pack	1.75	1.07	1.07	0.006	20	850003465920