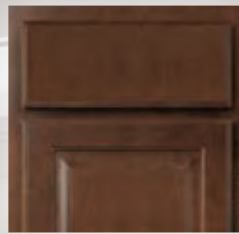


HAMPTON BAY®

Kitchen Cabinetry Program Notebook



Shown in Shaker Brindle



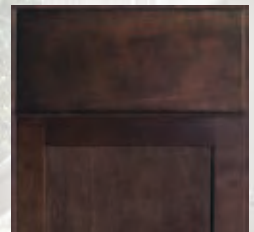
HAMPTON
Cognac



SHAKER
Brindle



HAMPTON
Natural Hickory



SHAKER
Java



HAMPTON
Medium Oak



SHAKER
Satin White (RTF)



HAMPTON
Satin White (RTF)



SHAKER
Dove Gray (RTF)



UNFINISHED

Table of Contents

Vendor Information	2
Product Specifications	3 - 4
Door Styles and Finishes	5
Model Number Guide	6
Wall Cabinets	7 - 9
Base Cabinets	10 - 12
Pantry Cabinets and Oven Cabinets	13 - 14
Accessories	14 - 18
Design and Layout Ideas	19 - 21
Care and Cleaning, Wood Characteristics	22
Order Processing and RTV Procedures	22 - 23
Warranty Details	23

Hampton Bay® Kitchen Programs

1. In-Stock – Take cabinets home today

- Essential cabinet selection for most kitchens
- Buy 10 cabinets, save 10%
- Finish availability varies by store

2. Special Order – Ships to the store in 2 weeks

- Expanded cabinet selection, ships free to store with 5 cabinet minimum
- Buy 10 cabinets, save 10%
- All door styles and finishes available

3. HomeDepot.com

- Expanded cabinet selection, ships next day, free delivery to the store, home or jobsite
- Buy 10 cabinets, save 10%
- All styles and finishes available

4. PRO Program – Ships direct to the home or jobsite within 2-3 weeks

- Includes all stock and Special Order cabinets and accessories
- Volume discounts available at 75+ cabinet and 150+ cabinets
- All door styles and finishes available

2020 Catalogs

When designing with the Hampton Bay offering, use the below listed 2020 catalogs:

HBK_SK: In-Stock Pick List for all Finished and Unfinished Cabinetry

HBK_SO: Special Order for all Finished and Unfinished Cabinetry

SKU Numbers

- SKU numbers listed per model number in the Program Notebook refer to the 2020 Special Order catalog (HBK_SO) SKU numbers.
- Stock SKU numbers are not listed in the Program Notebook. Items that are available only in the 2020 Stock catalog (HBK_SK) are noted as “In-Stock ONLY”.
- Online SKU numbers are not listed in the Program Notebook and should be searched for by using the model number.

Vendor Information

Manufacturer: American Woodmark Corporation	Customer Care Service Hours: Monday through Friday 8:00 am - 7:00 pm EST
In-Stock Vendor #: 71203	
Special Order Vendor #: 60071203	Home Depot Customer Support #: (877) 527-0313
Pro Program Vendor #: 60081766	Hampton Bay Customer Care #: (888) 578-4009
Delivery Fee Applicable: NONE	Order Processing Fax #: (714) 449-2222
Visit us at: www.hamptonbaykitchens.com	Customer Care Email: homeproducts_CC@woodmark.com



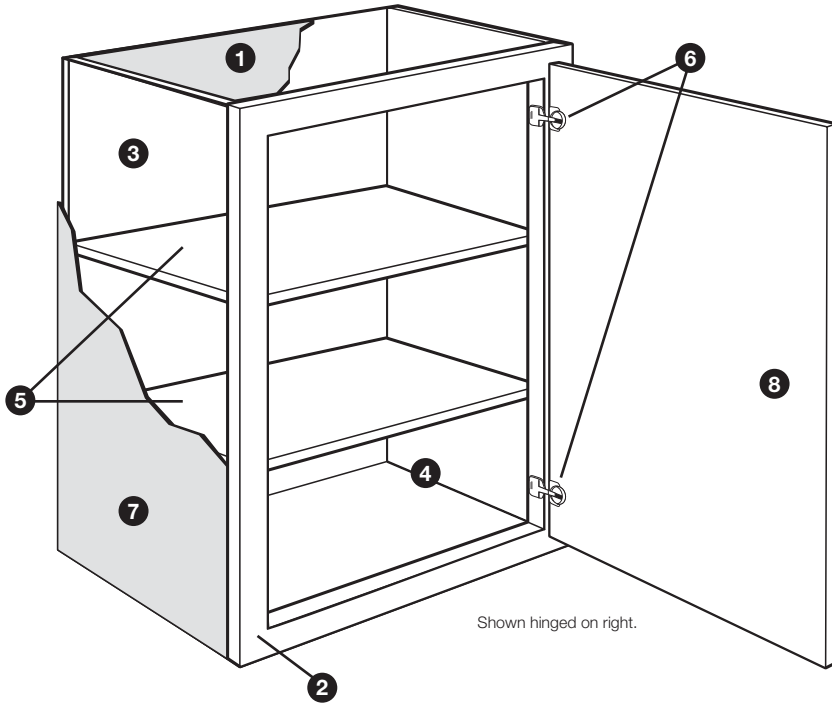
75+ cabinet sizes
available in all finishes

SHIPS NEXT DAY

on homedepot.com orders

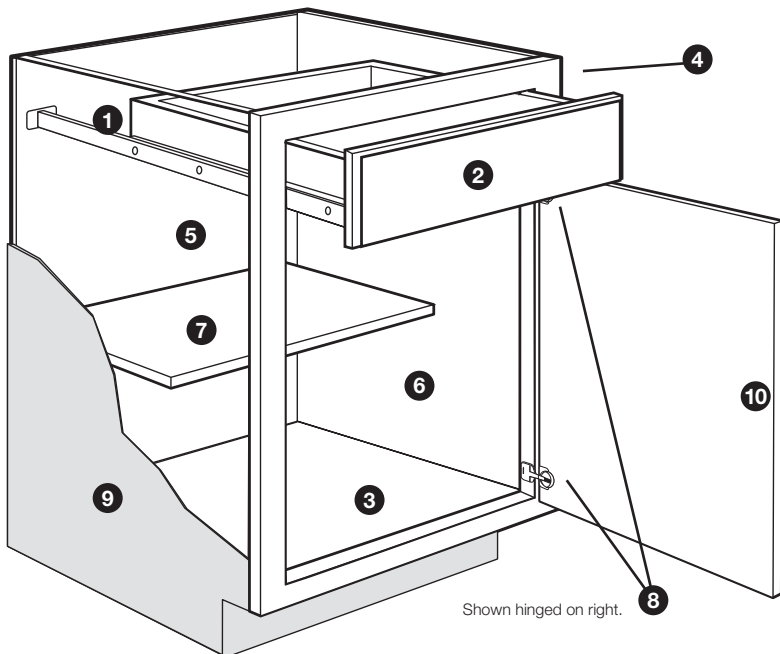
Hampton Bay is a division of the American Woodmark Corporation.

Wall Cabinets



- 1 Top/Bottom Panels:** 3/8" thick engineered wood fully encapsulated in the face frame, back and side panels.
- 2 Face Frame:** Pocket screw construction with 3/4" thick, 1 1/2" wide material.
- 3 Back Panel:** 3/8" thick engineered wood fully encapsulated into top and bottom panels for strength.
- 4 Interior:** Natural maple laminate finish.
- 5 Full-Depth Shelf:** 3/4" thick engineered wood with metal shelf pins.
- 6 Hinges:** Fully concealed and adjustable.
- 7 End Panels:**
Finished Cabinetry – 1/2" thick engineered wood with laminated exterior to match cabinet finish.
Unfinished Cabinetry – 1/2" thick engineered wood with raw exterior.
- 8 Door:** Single-door cabinets are hinged left and can be reversed in the field. No center stiles on double-door cabinets to allow full access.

Base Cabinets



- 1 Drawer Glides:**
Finished Cabinetry – Ball-Bearing
Unfinished Cabinetry – Epoxy
- 2 Drawer Box:** Hardwood 4-sided drawer box with fully encapsulated bottom panel.
- 3 Bottom Panel:** 3/8" engineered wood fully encapsulated in the face frame, back and side panels.
- 4 Face Frame:** Pocket screw construction with 3/4" thick, 1 1/2" wide material.
- 5 Back Panel:** 3/8" thick engineered wood. Backs of sink base cabinets must be cut for plumbing access.
- 6 Interior:** Natural maple laminate finish.
- 7 Half-Depth Shelf:** 3/4" thick engineered wood.
- 8 Hinges:** Fully concealed and adjustable.
- 9 End Panels:**
Finished Cabinetry – 1/2" thick engineered wood with laminated exterior to match cabinet finish.
Unfinished Cabinetry – 1/2" thick engineered wood with raw exterior.
- 10 Door:** Single-door cabinets are hinged left and can be reversed in the field. No center stiles on double-door cabinets to allow full access.

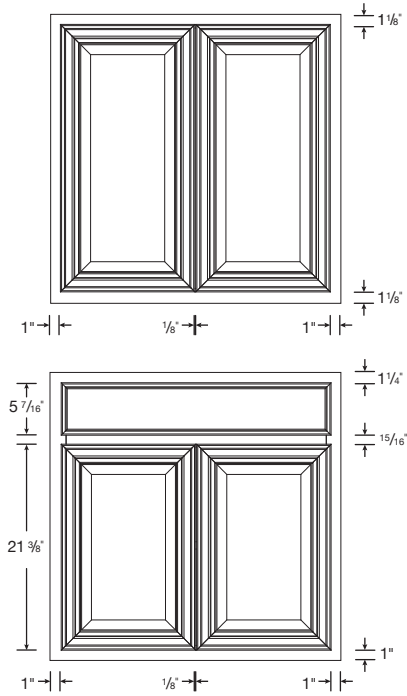
Finished Cabinetry

Unfinished Cabinetry

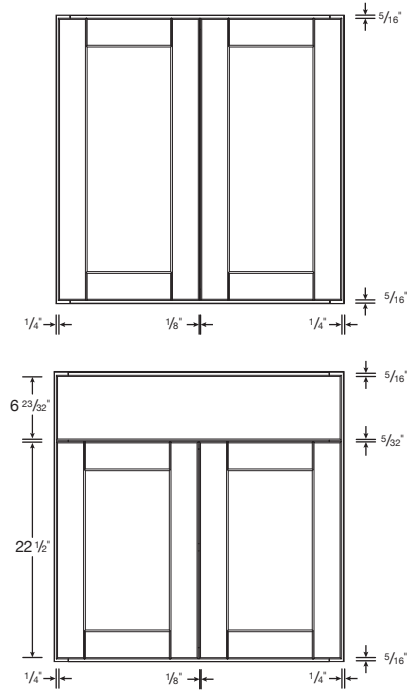


Product Specifications

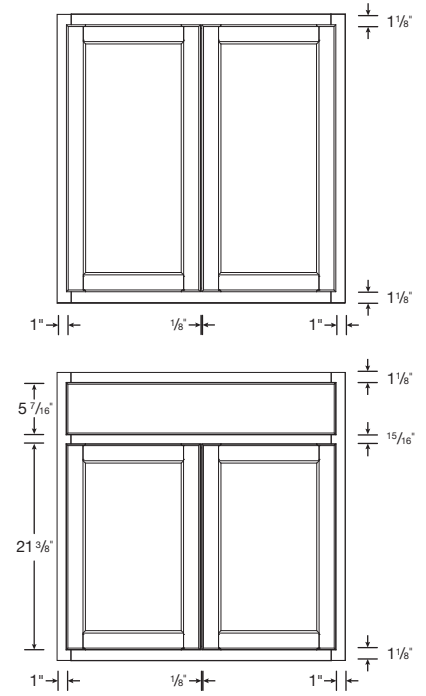
Traditional Overlay



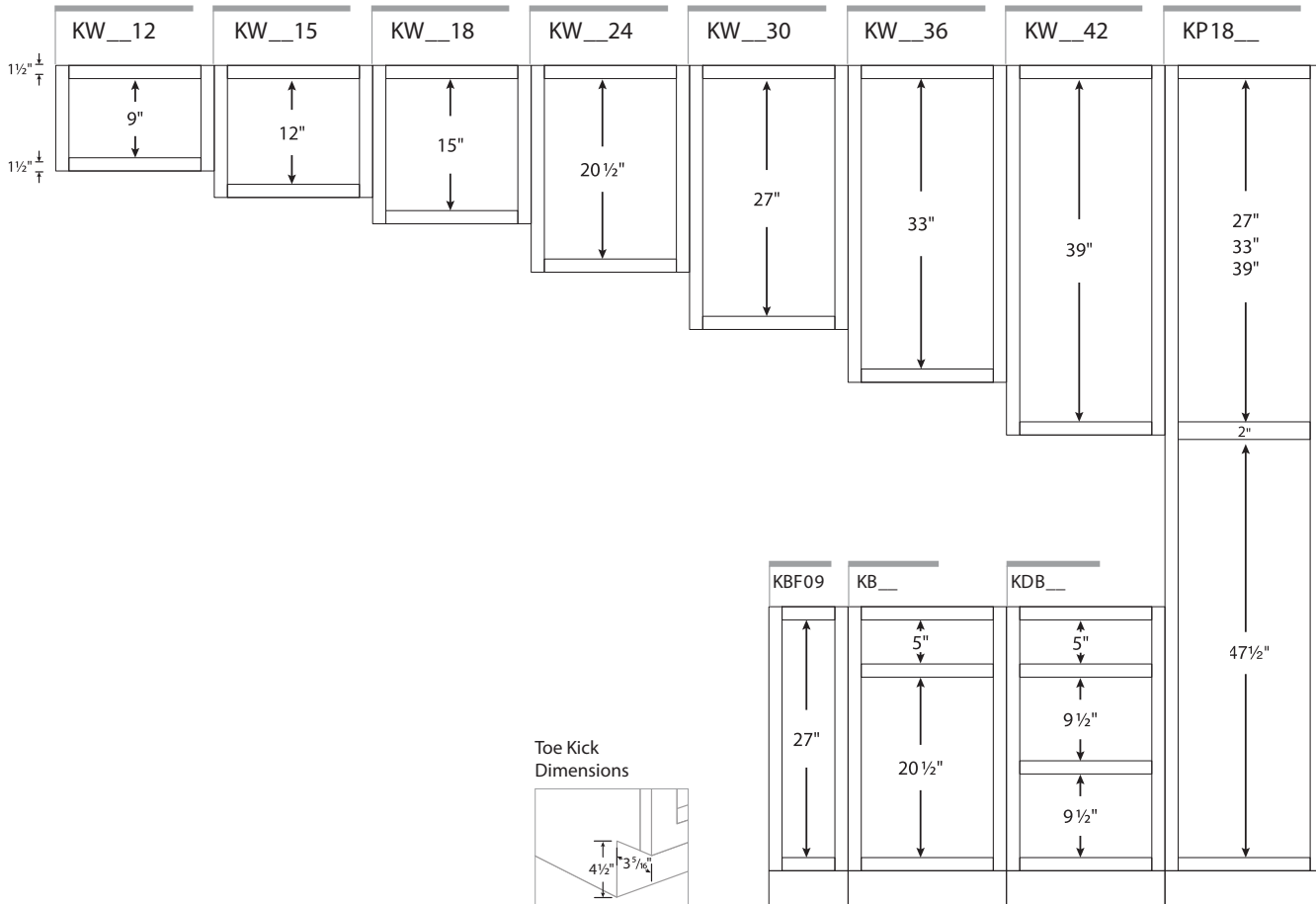
Full Overlay



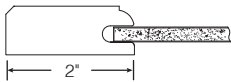
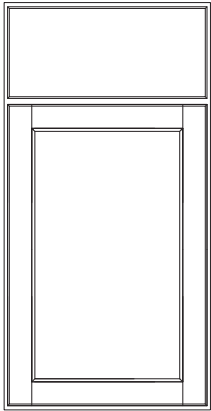
Unfinished



Frame Opening Dimensions



Shaker



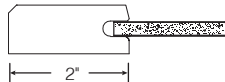
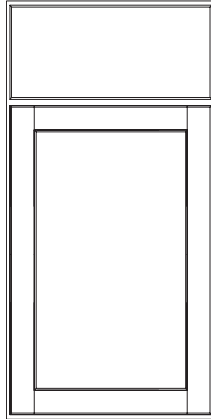
Finishes

Brindle (BDL)

Details

Mortise and Tenon Construction
Full Overlay
Recessed Panel

Shaker



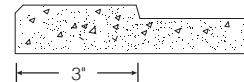
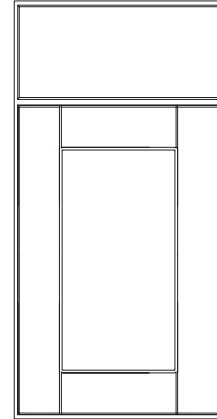
Finishes

Java (SJM)

Details

Mortise and Tenon Construction
Full Overlay
Recessed Panel

Shaker (RTF)



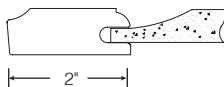
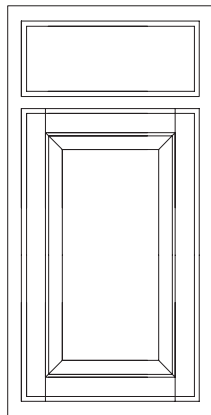
Finishes

Satin White RTF (SSW)
Dove Gray (SDV)

Details

Routed MDF
Full Overlay
Recessed Panel

Hampton



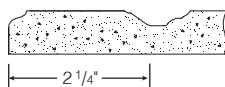
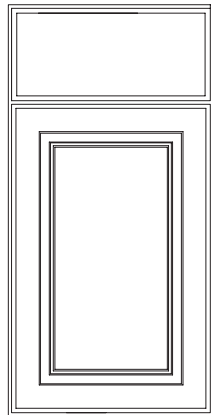
Finishes

Cognac (COG)
Natural Hickory (NHK)
Medium Oak (MO)

Details

Mortise and Tenon Construction
Traditional Overlay
Raised Panel

Hampton (RTF)



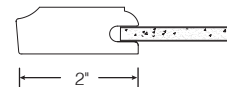
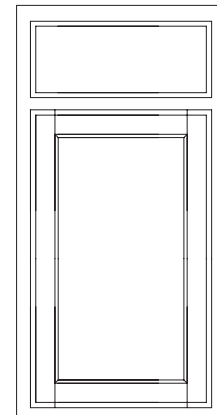
Finish

Satin White RTF (SW)

Details

Routed MDF
Full Overlay
Raised Panel

Unfinished



Finish

Unfinished (UF)

Details

Mortise and Tenon Construction
Traditional Overlay
Recessed Panel
Ready to Stain or Paint

Finished and Unfinished Cabinetry

KW1230-COG

Kitchen	Types of Cabinet / Accessory	Width (inches)	Height (inches)	Door Style and Finish
---------	------------------------------	----------------	-----------------	-----------------------

TYPES OF CABINETS

W	Wall/Wall Bridge Cabinet
WD	Corner Wall Cabinet
WFC	Wall Flex Cabinet
BF	Base Cabinet with Full Height Door
B	Base Cabinet
DB	Drawer Base Cabinet
SB	Sink/Cooktop Base Cabinet
CSB	Corner Sink Base Cabinet
SBA	Accessible Sink Base Cabinet
BBC	Blind Base Corner Cabinet
BLS	Lazy Susan Corner Base Cabinet
P	Pantry Cabinet
BW	Waste Bin Base Cabinet
WMS	Wall Flex Shelving
KAREP	Refrigerator End Panel
SBD	Apron Front Sink Base Cabinet
DV	Double Oven Cabinet
VSB	Vanity Sink Base Cabinet
VDB	Vanity Drawer Base

TYPES OF ACCESSORIES

AS	Wall/Base Veneer End Panel
AIE	Island/Peninsula Veneer End Panel
AEP	Decorative Wall/Base End Panel
ADEP	Dishwasher End Panel
AUP	Universal Panel
ADPK	Decorative Island Panel Kit
ADCP	Decorative Corner Post
AFS	Filler
ADRTA	Base/Pantry Pull-Out Drawer
ATKX	Toe Kick Molding
AMTX	Shoe Trim Molding
AMSX	Scribe Molding
AMC5X	Crown Molding - Traditional
AMC4X	Crown Molding - Shaker
AOCMX	Outside Corner Molding
AMBSX	Base Molding
AMSQX	Square Edge Molding
AMDEX	Decorative Edge Molding

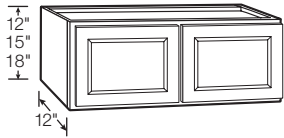
NOTE: X at end denotes single pack through Special Order.

DOOR STYLE AND FINISH

COG	Hampton Cognac
NHK	Hampton Natural Hickory
MO	Hampton Medium Oak
SW	Hampton Satin White RTF
SJM	Shaker Java
SDV	Shaker Dove Gray RTF
SSW	Shaker Satin White RTF
BDL	Shaker Brindle
UF	Unfinished

Wall Cabinets

12", 15" & 18" High Wall Bridge Cabinet

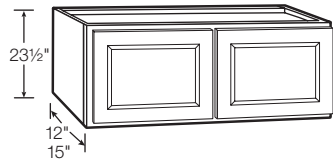


Model	HAMPTON				SHAKER				UF
	Cognac (COG)	Hickory (NHK)	Oak (MO)	White (SW)	Gray (SDV)	Java (SJM)	White (SSW)	Brindle (BDL)	Unfinished (UF)
KW3012	505886	536805	495192	489762	1002405396	329339	542087	1004302497	1002754238
KW3612	505999	537564	496670	490568	1002405388	338350	546684	1004302509	1002754239
KW3015	506116	537106	495725	489787	1002405395	331309	542149	1004302499	1002754266
KW3615	508378	537596	496776	490610	1002405387	338421	603646	1004302511	1002754267
KW3018	487348	537137	495827	489886	1002405394	332102	542159	1004302501	1002754268
KW3618	441023	476980	460551	511384	1002405386	592492	645490	1004302512	1002754269

ALL DOOR STYLES:

- No shelf

24" High Wall Bridge Cabinet



MODEL	HAMPTON				SHAKER				UF
	Cognac (COG)	Hickory (NHK)	Oak (MO)	White (SW)	Gray (SDV)	Java (SJM)	White (SSW)	Brindle (BDL)	Unfinished (UF)
KW3024	487439	490487	495880	492430	1002405393	333392	543987	1004302503	1002754270
KW3624	487446	492293	496941	539785	1002405385	339863	603679	1004302515	1002754272
KW302415	506347	537175	487915	489949	1002405392	332637	542542	1004302504	1002754271

ALL DOOR STYLES:

- KW302415 is 15" deep

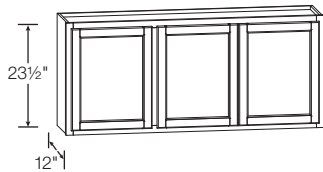
FINISHED DOOR STYLES:

- Includes one full-depth adjustable shelf

UNFINISHED DOOR STYLE:

- No shelf

24" High Wall Bridge Cabinet

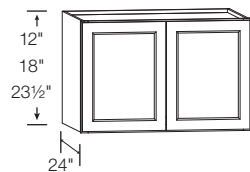


MODEL	HAMPTON				SHAKER				UF
	Cognac (COG)	Hickory (NHK)	Oak (MO)	White (SW)	Gray (SDV)	Java (SJM)	White (SSW)	Brindle (BDL)	Unfinished (UF)
KW5424-UF	N/A								In-stock

UNFINISHED DOOR STYLE:

- Includes one full-depth shelf

12", 18" & 24" High Wall Bridge Cabinet - 24" Deep



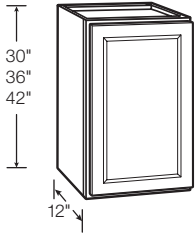
MODEL	HAMPTON				SHAKER				UF
	Cognac (COG)	Hickory (NHK)	Oak (MO)	White (SW)	Gray (SDV)	Java (SJM)	White (SSW)	Brindle (BDL)	Unfinished (UF)
KW361224	1002405294	1002405301	1002405298	1002405310	1002405462	1002405304	1002405307	1004302510	N/A
KW361824	1002405295	1002405302	1002405299	1002405311	1002405463	1002405305	1002405308	1004302514	
KW362424	1002405296	1002405303	1002405300	1002405312	1002405464	1002405306	1002405309	1004302517	

FINISHED DOOR STYLES:

- Designed for use with Refrigerator End Panel
- Each side of cabinet must be attached to a cabinet, wall or Refrigerator End Panel
- KW361224 and KW361824 have no shelf
- KW362424 includes one full-depth adjustable shelf

Wall Cabinets

30", 36" & 42" High Wall Cabinet (Single Door)



MODEL	HAMPTON				SHAKER				UF
	Cognac (COG)	Hickory (NHK)	Oak (MO)	White (SW)	Gray (SDV)	Java (SJM)	White (SSW)	Brindle (BDL)	Unfinished (UF)
KW930	509460	537636	497629	490701	1002405381	343553	742694	1004302522	1002759047
KW1230	503267	521078	493074	487842	1002405413	317083	524636	1004302480	1002754231
KW1530	503800	522318	493541	487939	1002405409	318644	535864	1004302483	1002754232
KW1830	504102	524562	493678	488073	1002405406	321108	536443	1004302486	1002754233
KW2130	504905	525715	494923	488997	1002405403	325991	536867	1004302489	1002754253
KW2430	503134	490471	494993	489129	1002405401	327794	537729	1004302491	1002754234
KW936	506743	537764	497699	490710	1002405380	344333	745548	1004302523	1002754255
KW1236	502869	538297	493458	487871	1002405411	317370	533373	1004302481	1002754256
KW1536	503812	490339	493616	487974	1002405408	319438	536190	1004302484	1002754257
KW1836	504730	525568	493713	488265	1002405405	323732	536605	1004302487	1002754258
KW2136	487197	531705	498657	539607	1002405402	326099	537354	1004302490	1002754259
KW2436	505252	531796	495010	539642	1002405400	327953	539638	1004302492	1002754260
KW1242	503745	538404	493516	487908	1002405410	317460	535122	1004302482	N/A
KW1542	504044	522848	498607	488040	1002405407	320815	536254	1004302485	
KW1842	502987	538702	494887	488524	1002405404	324747	536769	1004302488	
KW2442	505556	490483	495035	489392	1002405399	328842	539803	1004302494	

ALL DOOR STYLES:

- Reversible door for left or right hinging

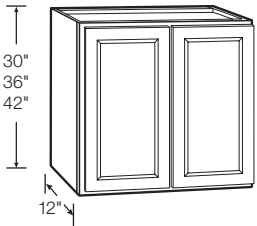
FINISHED DOOR STYLES:

- Includes two full-depth adjustable shelves

UNFINISHED DOOR STYLE:

- Includes one full-depth adjustable shelf

30", 36" & 42" High Wall Cabinet (Double Door)



MODEL	HAMPTON				SHAKER				UF
	Cognac (COG)	Hickory (NHK)	Oak (MO)	White (SW)	Gray (SDV)	Java (SJM)	White (SSW)	Brindle (BDL)	Unfinished (UF)
KW2730	505689	532142	495043	489487	1002405398	328880	540739	1004302495	1002754254
KW3030	503169	490508	496544	490134	1002405391	336925	545230	1004302505	1002754235
KW3630	506320	538960	497072	490639	1002405384	340759	603696	1004302518	1002754236
KW2736	505852	538747	495067	489722	1002405397	328938	541988	1004302496	1002754262
KW3036	507109	537226	498782	492561	1002405390	337698	545956	1004302506	1002754263
KW3636	508869	492330	497599	490691	1002405383	342971	603729	1004302520	1002754264
KW3042	503221	491508	496609	490449	1002405389	337771	546024	1004302507	N/A
KW3642	487542	539255	487941	539876	1002405382	343243	742589	1004302521	

FINISHED DOOR STYLES:

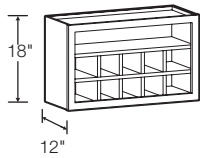
- Include two full-depth adjustable shelves

UNFINISHED DOOR STYLE:

- Includes one full-depth adjustable shelf

Wall Cabinets

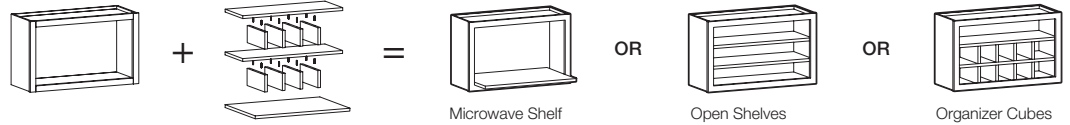
18" High Wall Flex Cabinet



MODEL	Cognac (COG)	Hickory (NHK)	Oak (MO)	White (SW)	Gray (DV)	Java (JM)	Brindle (BDL)	Unfinished (UF)
KWFC3018	447737	482107	469623	579015	1002405349	603365	1004302529	N/A

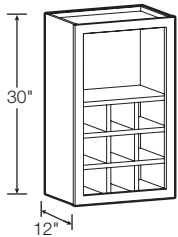
FINISHED DOOR STYLES:

- Includes open cabinet, two full-depth shelves, one 18" deep microwave shelf, eight dividers and dowels for multiple interior configurations
- Shelves and dividers are pre-drilled for dowel placement
- Features a matching interior



For more design ideas see page 20.

30" High Wall Flex Cabinet



MODEL	Cognac (COG)	Hickory (NHK)	Oak (MO)	White (SW)	Gray (DV)	Java (JM)	Brindle (BDL)	Unfinished (UF)
KWFC1830	452951	482657	471071	582133	1002405350	603394	1004302528	N/A

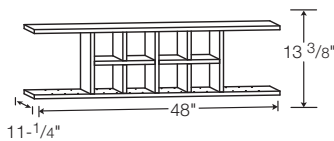
FINISHED DOOR STYLES:

- Includes open cabinet, three full-depth shelves, six dividers and dowels for multiple interior configurations
- Shelves and dividers are pre-drilled for dowel placement
- Features a matching interior



For more design ideas see page 20.

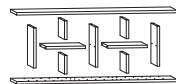
Wall Flex Shelving



MODEL	Cognac (COG)	Hickory (NHK)	Oak (MO)	White (SW)	Gray (DV)	Java (JM)	Brindle (BDL)	Unfinished (UF)
KWMS4813	1002405219	1002405222	1002405221	1002405223	1002405452	1002405220	1004302531	N/A

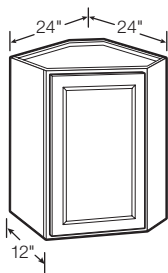
FINISHED DOOR STYLES:

- Includes top shelf, bottom shelf, five large shelf dividers, four small shelf dividers and dowels for multiple interior configurations
- Shelves and dividers are pre-drilled for dowel placement
- Can be trimmed to most widths under 48"
- Ready to Assemble
- Features a matching interior

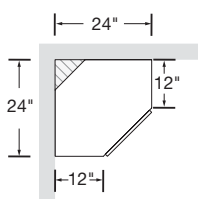


For more design ideas see page 20.

24" Corner Wall Cabinet



Overhead View



MODEL	HAMPTON					SHAKER			UF
	Cognac (COG)	Hickory (NHK)	Oak (MO)	White (SW)	Gray (SDV)	Java (SJM)	White (SSW)	Brindle (BDL)	Unfinished (UF)
KWD2430	487606	492395	498145	491140	1002405379	344803	745582	1004302524	1002754237
KWD2436	509707	539260	498787	491302	1002405378	346332	786359	1004302526	1002754265
KWD2442	507507	539266	498325	491957	1002405377	345188	786995	1004302527	N/A

ALL DOOR STYLES:

- Installs in a 24" x 24" wall area
- Reversible door for left or right hinging

FINISHED DOOR STYLES:

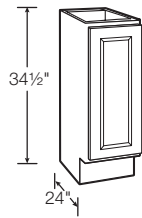
- 30" height includes one full-depth adjustable shelf
- 36" and 42" heights includes two full-depth adjustable shelves

UNFINISHED DOOR STYLE:

- Includes one full-depth adjustable shelf

Base Cabinets

Base Cabinet (Full Height Door)

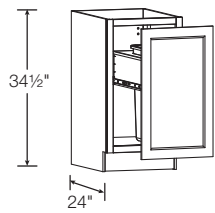


MODEL	HAMPTON				SHAKER				UF
	Cognac (COG)	Hickory (NHK)	Oak (MO)	White (SW)	Gray (SDV)	Java (SJM)	White (SSW)	Brindle (BDL)	Unfinished (UF)
KBFO9	501457	507340	492355	487457	1002405437	314331	428740	1004302457	1002754273

ALL DOOR STYLES:

- Includes one half-depth adjustable shelf
- Reversible door for left or right hinging

Waste Bin Base Cabinet

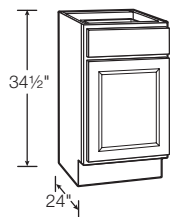


MODEL	HAMPTON				SHAKER				UF
	Cognac (COG)	Hickory (NHK)	Oak (MO)	White (SW)	Gray (SDV)	Java (SJM)	White (SSW)	Brindle (BDL)	Unfinished (UF)
KBW18	1002405263	1002405264	1002405261	1002405267	1002405458	1002405265	1002405266	1004302459	N/A

FINISHED DOOR STYLES:

- Heavy-duty ball-bearing drawer glides
- Includes one 12 gallon trash can

Base Cabinet (Single Door)



MODEL	HAMPTON				SHAKER				UF
	Cognac (COG)	Hickory (NHK)	Oak (MO)	White (SW)	Gray (SDV)	Java (SJM)	White (SSW)	Brindle (BDL)	Unfinished (UF)
KB12	487003	505693	491271	536480	1002405446	303299	412495	1004302445	1002754241
KB15	518431	506124	491873	536557	1002405445	304334	412640	1004302446	1002754242
KB18	487071	487039	487804	540412	1002405444	304418	414002	1004302448	1002754243
KB21	487081	537839	492167	540536	1002405443	304896	414496	1004302449	1002754274
KB24	500089	487078	487833	492190	1002405442	310097	416602	1004302450	1002754244

ALL DOOR STYLES:

- Includes one half-depth adjustable shelf
- Reversible door for left or right hinging

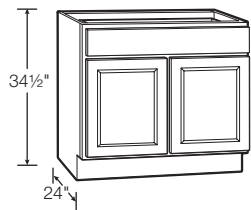
FINISHED DOOR STYLES:

- Ball-bearing drawer glides

UNFINISHED DOOR STYLE:

- Epoxy drawer glides

Base Cabinet (Double Door)



MODEL	HAMPTON				SHAKER				UF
	Cognac (COG)	Hickory (NHK)	Oak (MO)	White (SW)	Gray (SDV)	Java (SJM)	White (SSW)	Brindle (BDL)	Unfinished (UF)
KB27	502126	487343	492295	492298	1002405441	312141	416917	1004302451	1002754276
KB30	502163	487999	487861	487243	1002405440	312330	421408	1004302453	1002754245
KB36	501214	538042	492323	487342	1002405439	313351	423587	1004302454	1002754246

ALL DOOR STYLES:

- Includes one half-depth adjustable shelf

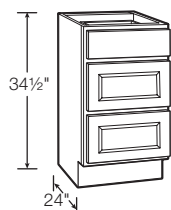
FINISHED DOOR STYLES:

- Ball-bearing drawer glides

UNFINISHED DOOR STYLE:

- Epoxy drawer glides

Drawer Base



MODEL	HAMPTON				SHAKER				UF
	Cognac (COG)	Hickory (NHK)	Oak (MO)	White (SW)	Gray (SDV)	Java (SJM)	White (SSW)	Brindle (BDL)	Unfinished (UF)
KDB18	502217	509796	492392	492327	1002405434	315308	517572	1004302461	1002754247
KDB24	502263	511287	492422	492359	1002405433	315742	518875	1004302462	1002754249
KDB30	1002405239	1002405240	1002405246	1002405243	1002405455	1002405241	1002405242	1004302463	N/A
KDB36	1002405247	1002405248	1002405253	1002405251	1002405456	1002405249	1002405250	1004302464	

FINISHED DOOR STYLES:

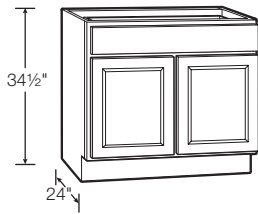
- 18" and 24" widths feature ball-bearing drawer glides
- 30" and 36" widths feature full extension heavy duty drawer glides on all three drawers
- 30" and 36" widths are ideal for pots and pans

UNFINISHED DOOR STYLE:

- Epoxy drawer glides

Base Cabinets

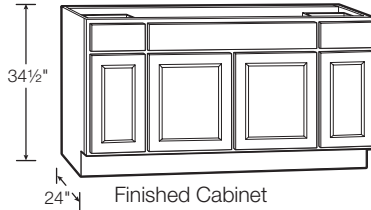
Sink/Cooktop Base Cabinet



MODEL	HAMPTON				SHAKER				UF
	Cognac (COG)	Hickory (NHK)	Oak (MO)	White (SW)	Gray (SDV)	Java (SJM)	White (SSW)	Brindle (BDL)	Unfinished (UF)
KSB30	501610	520059	492623	487829	1002405418	316944	523246	1004302471	1002754277
KSB36	487174	520173	492906	492382	1002405415	317060	523340	1004302473	1002754250

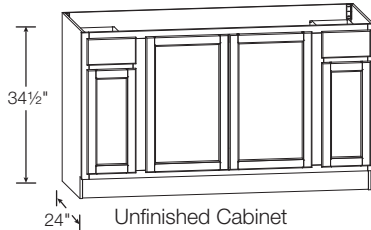
- ALL DOOR STYLES:**
- Full-height back panel
 - No shelf

60" Sink/Cooktop Base Cabinet



MODEL	HAMPTON				SHAKER				UF
	Cognac (COG)	Hickory (NHK)	Oak (MO)	White (SW)	Gray (SDV)	Java (SJM)	White (SSW)	Brindle (BDL)	Unfinished (UF)
KSB60	N/A		In-Stock	In-Stock	N/A				N/A

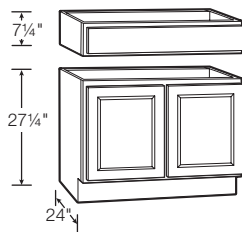
- FINISHED DOOR STYLES:**
- Features two top drawers
 - Ball-bearing drawer glides
 - Full-height back panel
 - No shelf



MODEL	HAMPTON				SHAKER				UF
	Cognac (COG)	Hickory (NHK)	Oak (MO)	White (SW)	Gray (SDV)	Java (SJM)	White (SSW)	Brindle (BDL)	Unfinished (UF)
KSBF60-UF	N/A								In-Stock

- UNFINISHED DOOR STYLE:**
- Features two top drawers
 - Epoxy drawer glides
 - Full-height back panel
 - No shelf

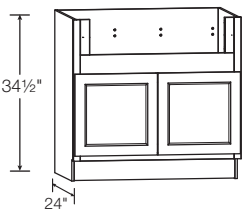
36" Accessible Sink Base Cabinet



MODEL	HAMPTON				SHAKER				UF
	Cognac (COG)	Hickory (NHK)	Oak (MO)	White (SW)	Gray (SDV)	Java (SJM)	White (SSW)	Brindle (BDL)	Unfinished (UF)
KSBA36	435695	474503	457846	505643	1002405414	587006	644882	1004302474	1002754278

- ALL DOOR STYLES:**
- Exterior side panels are natural maple laminate
 - No shelf

36" Apron Front Sink Base Cabinet



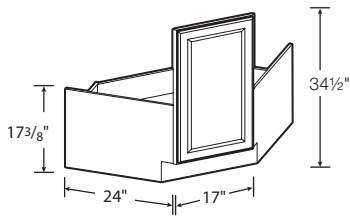
MODEL	HAMPTON				SHAKER				UF
	Cognac (COG)	Hickory (NHK)	Oak (MO)	White (SW)	Gray (SDV)	Java (SJM)	White (SSW)	Brindle (BDL)	Unfinished (UF)
KSBD36	1002405255	1002405260	1002405256	1002405259	1002405457	1002405257	1002405258	1004302475	N/A

- FINISHED DOOR STYLES:**
- 2" stiles and 4" rail are trimmable to accommodate various size sinks/cooktops
 - Smaller size sinks/cooktops can be accommodated with use of 3" or 6" filler
 - No shelf

APRON CUTOUT DIMENSIONS

Min. Width	Max. Width	Min. Height	Max. Height
29"	33"	7 1/2"	11"

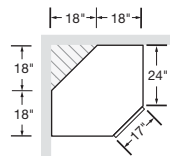
36" Corner Sink Base Cabinet



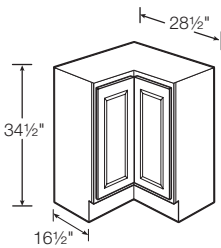
MODEL	HAMPTON				SHAKER				UF
	Cognac (COG)	Hickory (NHK)	Oak (MO)	White (SW)	Gray (SDV)	Java (SJM)	White (SSW)	Brindle (BDL)	Unfinished (UF)
KCSB36	439721	475068	459463	507706	1002405435	590533	645022	1004302460	1002754279

- ALL DOOR STYLES:**
- Ready to assemble
 - Installs in a 36" x 36" area
 - No shelf

Overhead View

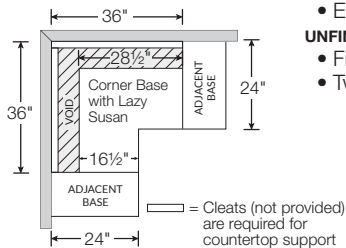


36" Corner Base Cabinet with Lazy Susan

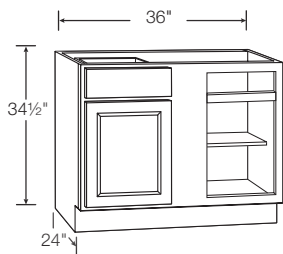


MODEL	HAMPTON				SHAKER				UF
	Cognac (COG)	Hickory (NHK)	Oak (MO)	White (SW)	Gray (SDV)	Java (SJM)	White (SSW)	Brindle (BDL)	Unfinished (UF)
KBLS36	502166	509093	492362	487590	1002405436	314486	514416	1004302458	N/A
KBLSN36-UF	N/A								1002754251

- ALL DOOR STYLES:**
- Installs in a 36" x 36" wall area
- FINISHED DOOR STYLES:**
- Two-piece overlay door hinged together in the middle
 - Two 360° independently rotating metal racks
 - Exterior side panels are natural maple laminate
- UNFINISHED DOOR STYLE:**
- Fixed traveling door rotates inside of cabinet
 - Two plastic trays

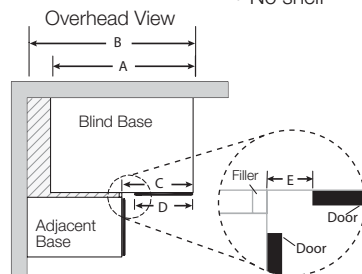


36" Blind Base Cabinet



MODEL	HAMPTON				SHAKER				UF
	Cognac (COG)	Hickory (NHK)	Oak (MO)	White (SW)	Gray (SDV)	Java (SJM)	White (SSW)	Brindle (BDL)	Unfinished (UF)
KBBC45	487089	488098	498392	487384	1002405438	313879	427881	1004302455	1002754280

- ALL DOOR STYLES:**
- Door and drawer are reversible to accommodate left or right blind
- FINISHED DOOR STYLES:**
- Ball-bearing drawer glides
 - Includes one half-depth adjustable shelf
- UNFINISHED DOOR STYLE:**
- Epoxy drawer glides
 - No shelf

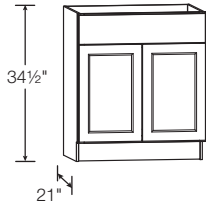


OVERLAY	A	B	C	D*	E*	MAX B	MIN B
Traditional Overlay	36"	42"	18"	13"	4"	46 1/2"	39 1/4"
Full Overlay	36"	42"	18"	14 3/4"	3 1/8"	46 1/2"	40 1/8"
Unfinished	36"	42"	18"	14"	3 1/2"	46 1/2"	39 3/4"

* Only applies when cabinet is pulled to 42"

Kitchen Vanities

Vanity Cabinet

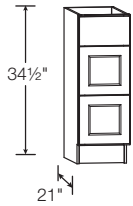


MODEL	HAMPTON				SHAKER				UF
	Cognac (COG)	Hickory (NHK)	Oak (MO)	White (SW)	Gray (SDV)	Java (SJM)	White (SSW)	Brindle (BDL)	Unfinished (UF)
KVSB24	1002405325	1002405322	1002405326	1002405324	1002405466	1002405328	1002405323	1004302477	N/A
KVSB30	1002405333	1002405330	1002405334	1002405332	1002405467	1002405335	1002405331	1004302478	
KVSB36	1002405342	1002405339	1002405343	1002405341	1002405468	1002405344	1002405340	1004302479	

FINISHED DOOR STYLES:

- No drawer
- Works with standard toe kick (KATKX) sold separately
- No shelf

Vanity Drawer Cabinet



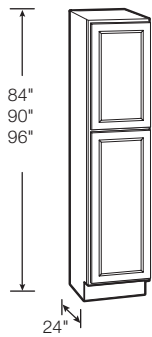
MODEL	HAMPTON				SHAKER				UF
	Cognac (COG)	Hickory (NHK)	Oak (MO)	White (SW)	Gray (SDV)	Java (SJM)	White (SSW)	Brindle (BDL)	Unfinished (UF)
KVDB12	1002405318	1002405315	1002405319	1002405317	1002405465	1002405320	1002405316	1004302476	N/A

FINISHED DOOR STYLES:

- Includes three drawers
- Works with standard toe kick (KATKX) sold separately
- Ball-bearing drawer glides

Pantry Cabinets

18" Pantry



MODEL	HAMPTON				SHAKER				UF
	Cognac (COG)	Hickory (NHK)	Oak (MO)	White (SW)	Gray (SDV)	Java (SJM)	White (SSW)	Brindle (BDL)	Unfinished (UF)
KP1884	502420	488359	498553	492360	1002405432	315966	521423	1004302468	1002754252
KP1890	487108	512244	487898	487769	1002405430	316353	521897	1004302469	1002754281
KP1896	502693	517690	492501	539479	1002405424	316396	522016	1004302470	N/A

ALL DOOR STYLES:

- Upper door lines up with 30", 36" and 42" high wall cabinets

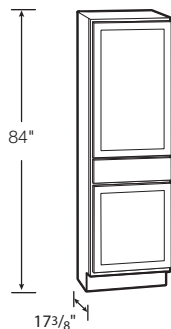
FINISHED DOOR STYLES:

- 84" and 90" includes three full-depth adjustable shelves and one full-depth fixed shelf
- 96" includes four full-depth adjustable shelves and one full-depth fixed shelf
- 96" has removable toe kick that is field installed

UNFINISHED DOOR STYLE:

- Includes two full-depth adjustable shelves and one full-depth fixed shelf

24" Drawer Pantry



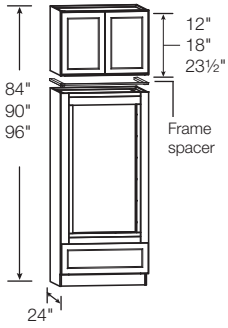
MODEL	HAMPTON				SHAKER				UF
	Cognac (COG)	Hickory (NHK)	Oak (MO)	White (SW)	Gray (SDV)	Java (SJM)	White (SSW)	Brindle (BDL)	Unfinished (UF)
KPDR2484-UF	N/A								In-Stock

UNFINISHED DOOR STYLE:

- Epoxy drawer glides
- Includes two full-depth adjustable shelves

Oven Cabinets

Double Oven Cabinet



MODEL	HAMPTON				SHAKER				UF
	Cognac (COG)	Hickory (NHK)	Oak (MO)	White (SW)	Gray (SDV)	Java (SJM)	White (SSW)	Brindle (BDL)	Unfinished (UF)
KDV3384	1002405272	1002405278	1002405275	1002405287	1002405459	1002405281	1002405284	1004302465	N/A
KDV3390	1002405273	1002405279	1002405276	1002405288	1002405460	1002405282	1002405285	1004302466	
KDV3396	1002405274	1002405280	1002405277	1002405290	1002405461	1002405283	1002405286	1004302467	

FINISHED DOOR STYLES:

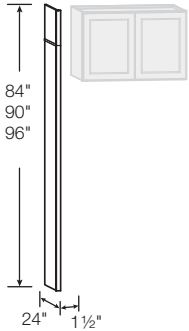
- Includes drawer with full extension heavy duty drawer glides
- Overhead 24" Deep Bridge Cabinet is not pre-installed to oven cabinet, comes as two pieces, boxed separately
- Frame spacer included in KDV3396 only
- Rails and stiles around oven opening are trimmable to accommodate various size ovens
- Can accommodate smaller size ovens with use of 3" and 6" filler
- KDV3384 and KDV3390 have no shelf
- KDV3396 includes one full-depth adjustable shelf for use in overhead bridge cabinet

DOUBLE OVEN CUTOUT DIMENSIONS

Min. Width	Max. Width	Min. Height	Max. Height
24"	30"	47 5/8"	52 1/8"

Accessories

24" Refrigerator End Panel Kit



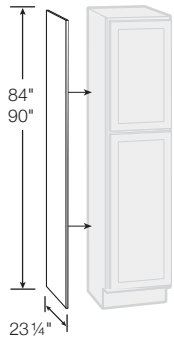
MODEL	Cognac (COG)	Hickory (NHK)	Oak (MO)	White (SW)	Gray (DV)	Java (JM)	Brindle (BDL)	Unfinished (UF)
KAREP	1002405212	1002405216	1002405214	1002405217	1002405451	1002405213	1004302436	N/A

FINISHED DOOR STYLES:

- Kit includes: one 84" high panel, one 12" high panel, one 6" high panel and one piece of scribe molding
- Panels combine to achieve 84", 90" or 96" overall height
- Features 1/2" panels finished on outside to match cabinet exterior
- For use with 24" Deep Wall Bridge cabinets, must be secured to cabinet/wall studs to be secure

For more design ideas see page 21.

Pantry End Panel

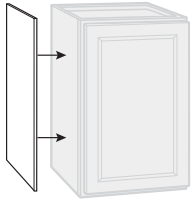


MODEL	Cognac (COG)	Hickory (NHK)	Oak (MO)	White (SW)	Gray (DV)	Java (SJM)	Brindle (BDL)	Unfinished (UF)
KASKP84-UF	N/A							1002759044
KASKP90-UF	N/A							1002759049

UNFINISHED DOOR STYLE:

- Features 1/8" thick veneer panel

Wall & Base Veneer End Panel



MODEL	Cognac (COG)	Hickory (NHK)	Oak (MO)	White (SW)	Gray (DV)	Java (JM)	Brindle (BDL)	Unfinished (UF)
KAS1230	515523	500659	490580	536194	1002405357	298909	1004302437	N/A
KAS1236	515584	501275	490615	536318	1002405356	299473	1004302438	
KAS1242	516472	502071	490670	536341	1002405355	299963	1004302439	
KAS2435	517309	502255	490702	536381	1002405354	299983	1004302440	
KAIE4835X	512483	497500	490376	535533	1002405366	298226	1004302425	
KASKW30-UF	N/A							
KASKW36-UF	N/A							1002759048
KASKB35-UF	N/A							1002759042

FINISHED DOOR STYLES:

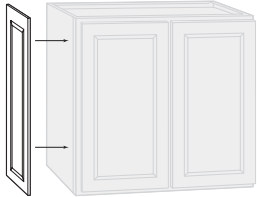
- Finished on one side to match cabinet exterior
- All finishes, excluding Satin White and Dove Gray, feature 3/16" thick veneer panels
- Satin White and Dove Gray finishes feature 3/16" thick laminate panels

UNFINISHED DOOR STYLE:

- Features 1/8" thick veneer panel

MODEL	Qty.	Width	Height
KAS1230	2	11 1/4"	30"
KAS1236	2	11 1/4"	36"
KAS1242	2	11 1/4"	42"
KAS2435	2	23 1/4"	34 1/2"
KAIE4835X	1	48"	34 1/2"
KASKW30-UF	1	11 1/4"	30"
KASKW36-UF	1	11 1/4"	36"
KASKB35-UF	1	23 1/4"	34 1/2"

Decorative End Panel

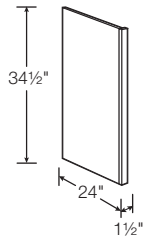


MODEL	HAMPTON				SHAKER				UF
	Cognac (COG)	Hickory (NHK)	Oak (MO)	White (SW)	Gray (SDV)	Java (SJM)	White (SSW)	Brindle (BDL)	Unfinished (UF)
KAEP1230	508987	492898	488008	540268	1002405450	296268	411910	1004302409	N/A
KAEP1530	1002405225	1002405227	1002405226	1002405228	1002405453	1002405235	1002405236	1004302413	
KAEP1830	1002405230	1002405232	1002405231	1002405233	1002405454	1002405237	1002405238	1004302414	
KAEP1236	509694	493090	488039	532711	1002405449	296316	411928	1004302411	
KAEP1242	509745	493315	488089	533241	1002405448	296480	412443	1004302412	
KAEP2430	509810	495135	488212	534004	1002405447	296887	412458	1004302416	

FINISHED DOOR STYLES:

- Matches style and finish of cabinet doors

Dishwasher End Panel

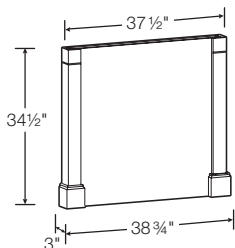


MODEL	Cognac (COG)	Hickory (NHK)	Oak (MO)	White (SW)	Gray (DV)	Java (JM)	Brindle (BDL)	Unfinished (UF)
KADEP	508783	492567	487992	540145	1002405375	295210	1004302405	1002759050

ALL DOOR STYLES:

- Features 1/2" panels finished on outside to match cabinet exterior

Decorative Island Panel Kit



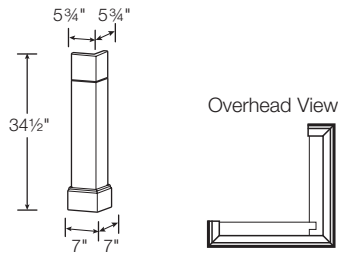
MODEL	Cognac (COG)	Hickory (NHK)	Oak (MO)	White (SW)	Gray (DV)	Java (JM)	Brindle (BDL)	Unfinished (UF)
KADPK337	454927	483362	471409	582839	1002405374	603463	1004302407	N/A

FINISHED DOOR STYLES:

- Panel kit can be field trimmed to accommodate different depths

For more design ideas see page 21.

Decorative Corner Post

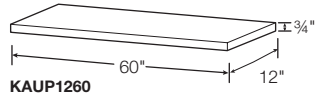
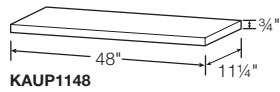


MODEL	Cognac (COG)	Hickory (NHK)	Oak (MO)	White (SW)	Gray (DV)	Java (JM)	Brindle (BDL)	Unfinished (UF)
KADCP6	457781	484202	472338	583021	1002405376	603498	1004302402	N/A

FINISHED DOOR STYLES:

- Features bottom molding on front and side surfaces

Universal Panels



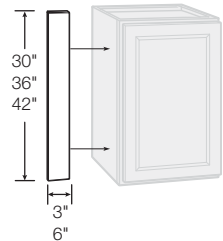
MODEL	Cognac (COG)	Hickory (NHK)	Oak (MO)	White (SW)	Gray (DV)	Java (JM)	Brindle (BDL)	Unfinished (UF)
KAUP1148	442115	479018	465235	572184	1002405352	594977	1004302442	N/A
KAUP1260	443840	479121	469154	574869	1002405351	598815	1004302444	

FINISHED DOOR STYLES:

- Laminated engineered wood finish on top, bottom, two short edges and one long edge

For more design ideas see page 20.

Wall & Base Fillers



MODEL	Cognac (COG)	Hickory (NHK)	Oak (MO)	White (SW)	Gray (DV)	White (SW)	Brindle (BDL)	Unfinished (UF)
KAFS330X	510182	496421	489506	534142	1002405373	534142	1004302417	1002759045
KAFS336X	510799	496738	489778	534799	1002405372	534799	1004302418	1002759052
KAFS342X	511599	496990	489790	535023	1002405371	535023	1004302419	N/A
KAFS630X	512012	497254	490078	535426	1002405369	535426	1004302421	1002759051
KAFS636X	512097	497353	490209	535449	1002405368	535449	1004302422	1002759053
KAFS642X	512226	497438	490215	535460	1002405367	535460	1004302424	N/A

91-1/2" Pantry Filler

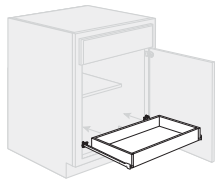


MODEL	Cognac (COG)	Hickory (NHK)	Oak (MO)	White (SW)	Gray (DV)	Java (JM)	Brindle (BDL)	Unfinished (UF)
KAFS396X	511728	497077	489940	535337	1002405370	297637	1004302420	1002759054

ALL DOOR STYLES:

- For use with 96" high cabinets, can be field trimmed for use with 90" or 84" high cabinets

Ready to Assemble Pull Out Drawer



Model	Pull Out Drawer Width	Base or Pantry Cabinet Width	Finished (JM, COG, NHK, MO, DV, SW, BDL)	Unfinished (UF)
KADRTA12	7"	12"	1004125538	N/A
KADRTA15	10"	15"	1004125539	
KADRTA18	13"	18"	1004125540	
KADRTA21	16"	21"	1004125541	
KADRTA24	19"	24"	1004125542	
KADRTA27	22"	27"	1004125544	
KADRTA30	25"	30"	1004125545	

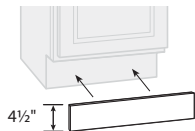
FINISHED DOOR STYLES:

- Kit includes pull out drawer and all installation hardware
- For use inside of 24" deep cabinets

UNFINISHED DOOR STYLE:

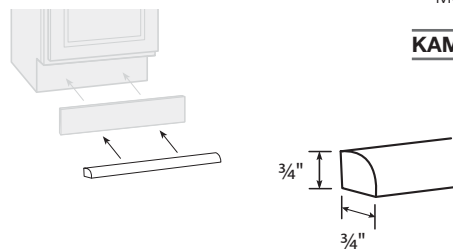
- Not designed for use inside Unfinished cabinets

91-1/2" Toe Kick Molding



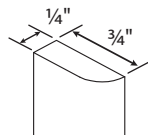
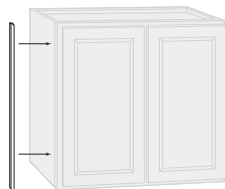
MODEL	Cognac (COG)	Hickory (NHK)	Oak (MO)	White (SW)	Gray (DV)	Java (JM)	Brindle (BDL)	Unfinished (UF)
KATKX	518111	502617	490750	536440	1002405353	299996	1004302441	1002759046

91-1/2" Shoe Trim Molding



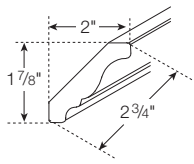
MODEL	Cognac (COG)	Hickory (NHK)	Oak (MO)	White (SW)	Gray (DV)	Java (JM)	Brindle (BDL)	Unfinished (UF)
KAMTX	514931	500341	490439	535945	1002405359	298545	1004302433	1002759055

91-1/2" Scribe Molding

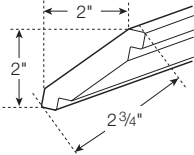


MODEL	Cognac (COG)	Hickory (NHK)	Oak (MO)	White (SW)	Gray (DV)	Java (JM)	Brindle (BDL)	Unfinished (UF)
KAMSX	514305	499763	490425	535628	1002405360	298283	1004302432	1002759056

91-1/2" Crown Molding



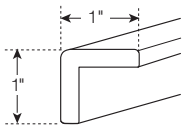
KAMC5X - Traditional



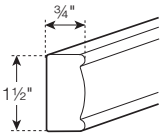
KAMC4X - Shaker

MODEL	Cognac (COG)	Hickory (NHK)	Oak (MO)	White (SW)	Gray (DV)	Java (JM)	Brindle (BDL)	Unfinished (UF)
KAMC5X	512570	497596	490412	535591		N/A		1002759057
KAMC4X		N/A		670461	1002405364	669807	1004302428	N/A

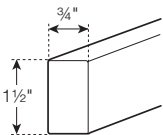
91-1/2" Molding



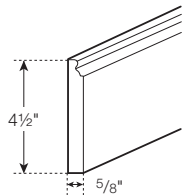
KAOCMX - Outside Corner



KAMDEX - Decorative Edge



KAMSQX - Square Edge

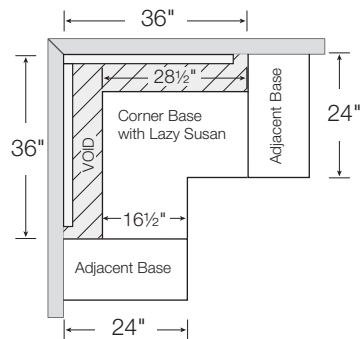


KAMBSX - Base

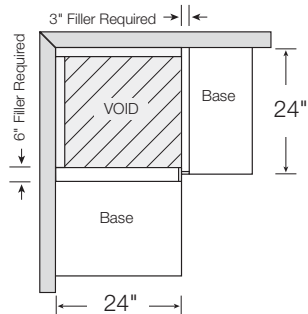
MODEL	Cognac (COG)	Hickory (NHK)	Oak (MO)	White (SW)	Gray (DV)	Java (JM)	Brindle (BDL)	Unfinished (UF)
KAOCMX	441041	477593	462111	512034	1002405358	592745	1004302434	1002759058
KAMDEX	446790	481578	469574	469574	1002405362	603074	1004302429	N/A
KAMSQX	446235	479590	469557	469557	1002405361	599182	1004302430	N/A
KAMBSX	441141	478060	464733	464733	1002405365	593021	1004302427	N/A

How to Turn the Corner

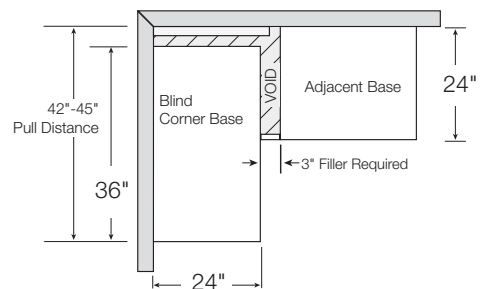
Lazy Susan Option



Block Out Option

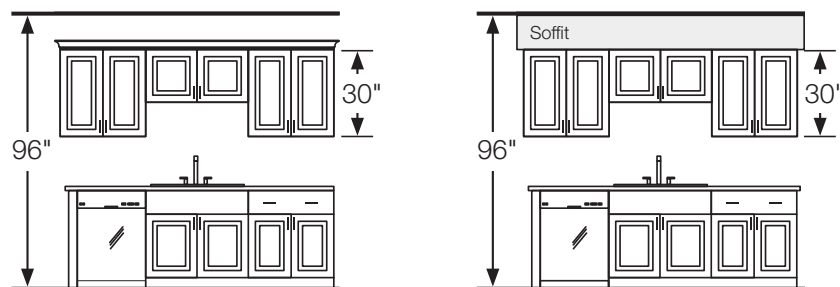


Blind Base Option

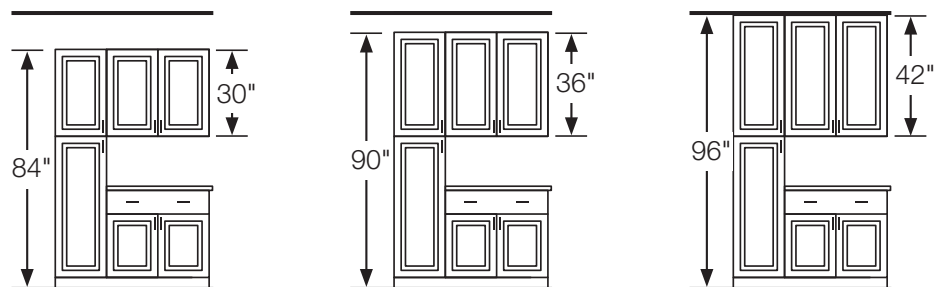


Designing with Different Wall Cabinet Heights

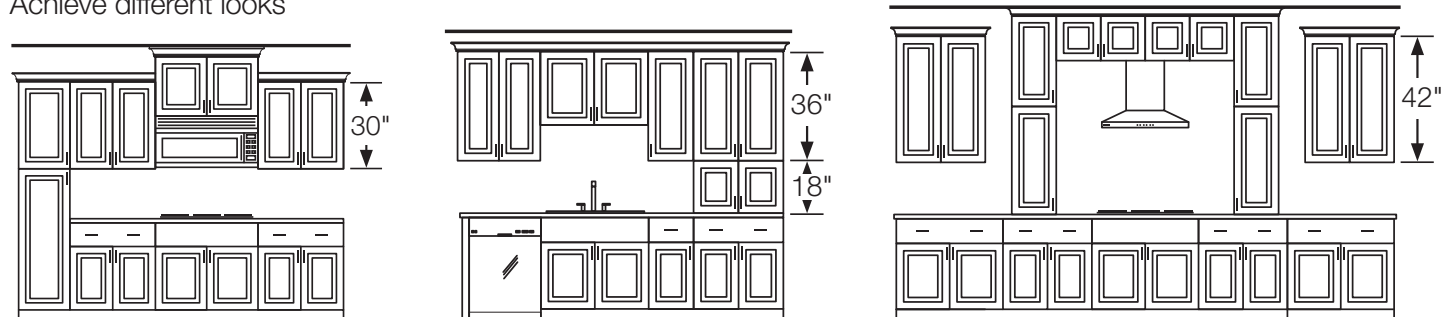
Typical layouts with 8-foot ceilings



Maximize storage with taller walls and pantries

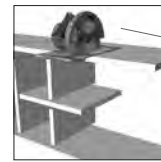


Achieve different looks

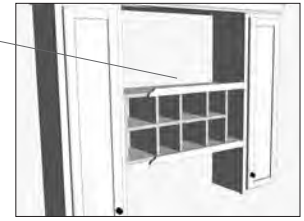


Design and Layout Ideas

Wall Flex Shelf



The Wall Flex Shelf can be configured and cut to size.



For a built-in look, finish the installation with KAMSQX molding on the front of the shelf kit.

Use it your way. Ideal for wine, cookbooks or to showcase special items. This kit must be installed between two cabinets.

Wall Flex Cabinets



30" X 18"



Microwave Shelf



18" X 30"



Organizer Cubes

Our flex cabinets come with shelves and dividers so you can configure it to meet your needs.

Universal Panels and Moldings



48" x 11-1/4" Universal Panel



60" x 12" Universal Panel



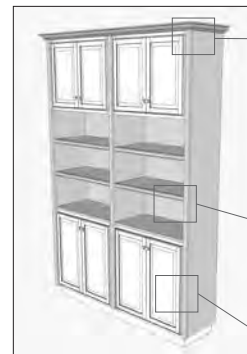
Decorative Edge Molding



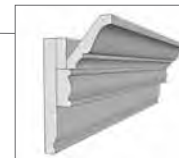
Square Edge Molding



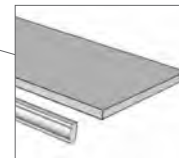
Span Open Spaces



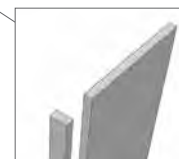
Build Custom Features



Stacked Crown



Universal Panel with Edge Molding



Universal Panel with Edge Molding

Use Universal Panels to add affordable shelf space and accent storage in any room. Available in two sizes, they can be used in vertical or horizontal applications and combined with edge molding for a decorative accent.

Decorative Island Panel Kits



A great way to maximize storage or work space, island panels are a fast and easy way to build an island or a peninsula.

One post is shipped loose to allow the panel to be trimmed.



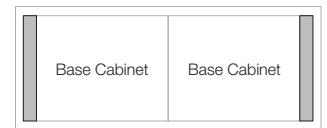
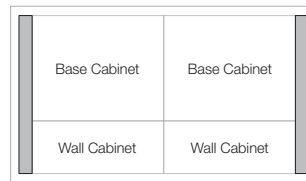
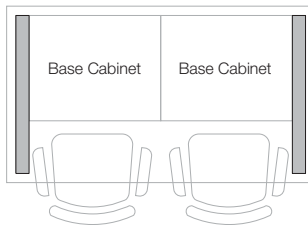
Island with Seating



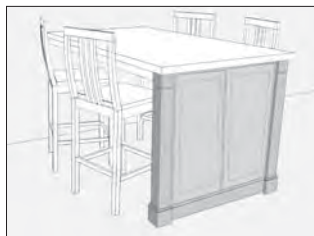
Island with Wall Cabinets



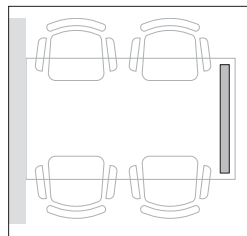
Base Depth Island



Panel kit can be cut to accommodate different depths



Seating area with Countertop Support and Decorative End Panels. Decorative End Panels sold separately.



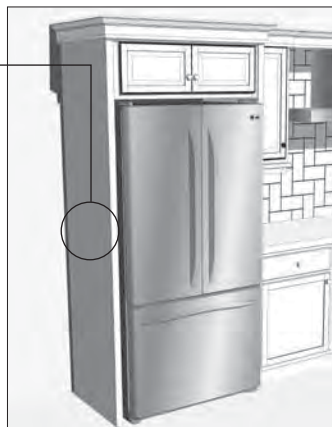
Use one decorative island panel to create a roomy peninsula for a convenient eating area in the kitchen.

Refrigerator End Panels Kits

Refrigerator End Panels must be attached to a deep bridge cabinet, and anchored to studs in wall. Bridge Cabinet sold separately. Bridge cabinets are KW361224, KW361824 and KW362424.



Refrigerator End Panel Kit includes 84", 12" and 6" panels, and scribe molding; Combine to meet your needs.



Refrigerator End Panel Kit combined with KW361224 bridge cabinet.



Refrigerator End Panel Kit combined with KW362424 bridge cabinet.

Care and Cleaning

- For normal spills, a damp cloth is sufficient. Remember to dry the surface immediately.
- Thermofoil (RTF) doors can be cleaned with most general purpose household cleaners.
- Wood doors can be cleaned with most general purpose household cleaners and polished with most furniture care products, not containing wax, petroleum solvents or silicones.
- Do not use caustic agents and/or abrasive scrubbers, or oven cleaners.
- Nicks and dings can be repaired with touch-up kits, available by calling Hampton Bay Customer Care at (888) 578-4009.
- For stains that persist, flakes of Ivory soap diluted in warm water may be used with a cloth or sponge. Remember to dry the surface immediately.
- Do not let liquids stay on the surface for a long period of time. The surface is water resistant, not waterproof.

Repairing Door or Drawer Edge Scrapes

Use touch-up sticks available by calling Hampton Bay Customer Care at (888) 578-4009 to fill in a scratch or nick. Remove excess residue leaving a smooth surface.

Wood Characteristics

- Wood:** Wood species in all finishes will exhibit color changes when exposed to different types of light and environments over time. Such color changes are expected in Hampton Bay brand cabinetry and are not defects. Graining differences, mineral streaks and color variations are expected in wood cabinetry. Hampton Bay cabinet door styles often exhibit these characteristics and such graining differences, mineral streaks and color variations are not defects.
- Maple:** Maple wood inherently has a characteristic known as “birdseye” or “fiddleback” pattern in the wood. When finished, it can have the appearance of a varied sheen, a splotchy appearance, or satiny look. This is the beauty of real maple and not a defect. In most cases it takes on a very pleasant look. Mineral streaks are also common and may appear darker when stained.
- Oak:** Oak is an open-grained hardwood with varying patterns ranging from straight grain to wide arcs. When stained, there will be a noticeable difference in the color shades between the open and closed grain areas of the wood. Wood can range from pink to a reddish brown.
- Hickory:** Hickory is a heavy hardwood which when finished has a warm, appealing appearance. Distinctive color streaks, combined with knots and other noticeable characteristics, make for a rustic appearance. While some parts may be clear and others extremely rustic, the characteristics of hickory are an inherent part of its charm and are considered to be a desirable part of the total look.
- Beech:** Beech wood is typically a pale cream color that turns into a pink to reddish tone due to a light steaming process that occurs during kiln drying. Small pin knots can be found in small clusters and is a normal occurrence in the Beech wood. Grain appears tightly closed and may have some slightly darker spots of redheart within the sapwood which gives depth and character to the Beech wood.

Special Order Processing

Special order Hampton Bay cabinet orders ship in 2 weeks. Some orders and store locations, including those outside the Continental U.S., may require more delivery time.

- Orders placed before 3:00 pm EST M-F will be recognized at the end of the same business day
- Orders placed after 3:00 pm EST M-F will be recognized the next business day
- Orders placed after 3:00 pm EST F-Sun will be recognized on Monday (if not a holiday)
- Holidays are NOT included in the 2 week lead-time
- A five cabinet minimum applies to all Hampton Bay Special Orders - accessories are not included in the five cabinet minimum.

RTV Procedures

Hampton Bay Special Order (Vendor # 60071203) and In-Stock (Vendor # 71203):

- Carrier Damage – If damage occurs during transit, the Receiving Department must file a freight claim with the Home Depot authorized carrier. Special Order product should be reordered for customer as needed (see “Replacement and Add-On Orders” bullet below).
 - ▶ The store determines whether the product can be sold with a markdown, donated or field destroyed.
- Manufacturer Defect – If a product contains a manufacturing or product defect, the Receiving Department should process the product using an RGA (see “Returns” bullet below). Product should be reordered for customer (see “Replacement and Add-On Orders” bullet below).
- Incorrect Product – If you believe that incorrect product was received, please contact Customer Care at (888) 578-4009.
- Replacement and Add-On Orders – When placing a replacement order or add-on order to complete an existing job, reference the original PO in the 2020 notes field otherwise orders will not be processed if the order falls under the (5) five cabinet order minimum.
- Returns – For all returns, regardless of reason, the Receiving Department should assign an RTV tag and utilize their department’s First Phone to gain an RGA.
 - ▶ All returned product should be destroyed in field regardless of RTV code.
- Cancellation – Hampton Bay Customer Care will not allow cancellations or changes to orders after 24 hours from receipt of the PO from the store. All cancellation requests must be submitted by email from the store to homeproducts_CC@woodmark.com in order to receive a cancellation number. A purchase order is not cancelled until a cancellation number has been issued.
- Additional Questions – Please contact Customer Care at (888) 578-4009 with any additional questions.

Warranty Details

- **Limited Lifetime Applies to All Finished Cabinetry**
- **1 Year Limited Applies to All Unfinished Cabinetry**

What This Warranty Covers: American Woodmark Corporation, the manufacturer of Hampton Bay, warrants its parts and products to be free of substantial defects in materials and workmanship from the original date of purchase under normal home use. This warranty is offered only to the original consumer purchaser and may not be transferred.

What Hampton Bay Will Do Under The Warranty: During the warranty period, the manufacturer of Hampton Bay will repair or replace any part or product that proves to have substantial defects in materials or workmanship, or the manufacturer of Hampton Bay will provide an equivalent replacement product. In keeping with our policy of continuous product improvement, the manufacturer of Hampton Bay reserves the right to change specifications in design and materials without notice and with no obligation to retrofit products we previously manufactured.

How State Law Applies: This warranty gives you specific legal rights, and you may also have other rights that vary from state to state.

Implied warranties: The manufacturer of Hampton Bay disclaims any implied warranty of merchantability, and there are no warranties that extend beyond the descriptions on the face hereof. To the extent that such disclaimer is not valid under applicable law, any implied warranty shall be coextensive in duration with this warranty.

Wood Characteristics, Aging and Printing Limitations: Because of the varying natural characteristics of wood and the effects of aging, product shown in displays and/or printed materials will not be an exact match to new cabinetry you will receive. Depending on the wood characteristics, the age of a sample and the environment of the showroom, samples will show some degree of variation from new product. In addition, you should not expect all doors, drawer fronts, trim or molding to match exactly in either finish or grain. Variation in wood is normal and unavoidable. In addition, it is not possible to exactly match our colors in printed materials. Therefore, you should view the actual samples when making your color selection.

What This Warranty Does Not Cover: This warranty does not cover any problems or damage which result from improper transportation, improper installation, mishandling, misuse, abuse, neglect, abnormal use, commercial use, improper maintenance, non-Hampton Bay repairs, accidents, or acts of God, such as hurricanes, fire, earthquakes or floods. This warranty

Important Information

and any applicable implied warranties do not cover incidental or consequential damages arising from any defects in the product, such as labor charges for installation or removal of the product or any associated products. This warranty does not cover defects or damage caused by normal wear & tear, alterations, environmental conditions, humidity absorption, or mold. In addition, variations in wood grain, finish color, aging or other natural wood and stain characteristics are not considered defects and are not covered by this warranty. Some states do not allow the exclusion or limitation of incidental or consequential damages, so the above limitation or exclusion may not apply to you.

How to Obtain Warranty Service: If you need replacement parts or would like to make a warranty claim, please contact Hampton Bay Customer Care at (888) 578-4009. All warranty claims must include the model number of the product, copy of the original receipt and the nature of the problem. In addition, the manufacturer of Hampton Bay may at its discretion require inspection of the installation site or authorize the prepaid return of the claimed defective part. Merchandise not pre-approved for return will not be accepted and the associated claim not accepted.

Products should be examined for defects prior to installation. This warranty also does not cover labor charges for installation or removal of the product or any associated products. If upon inspection you find our product has a damaged or missing part, it may not be necessary to return the unit to the store of purchase. Please contact Hampton Bay Customer Care to possibly obtain a replacement part.

Important Health Notice:

Some of the building materials used in this home (or these building materials) emit formaldehyde. Eye, nose, and throat irritation, headache, nausea and a variety of asthma-like symptoms, including shortness of breath, have been reported as a result of formaldehyde exposure. Elderly persons and young children, as well as anyone with a history of asthma, allergies, or lung problems, may be at greater risk. Research is continuing on the possible long-term effects of exposure to formaldehyde.

Reduced ventilation may allow formaldehyde and other contaminants to accumulate in the indoor air. High indoor temperatures and humidity raise formaldehyde levels. When a home is to be located in areas subject to extreme summer temperatures, an air-conditioning system can be used to control indoor temperature levels. Other means of controlled mechanical ventilation can be used to reduce levels of formaldehyde and other indoor air contaminants.

If you have any questions regarding the health effects of formaldehyde, consult your doctor or local health department.

WARNING: This product can expose you to chemicals including formaldehyde, which is known to the State of California to cause cancer, and methanol, which is known to the State of California to cause birth defects or other reproductive harm. For more information go to www.P65Warnings.ca.gov/products.

© Copyright 2021 American Woodmark Corporation. All rights reserved. THE HOME DEPOT® is a registered trademark of Home Depot Product Authority, LLC. HAMPTON BAY® is a registered trademark of Home Depot Product Authority, LLC.

All Hampton Bay® products meet or exceed the stringent performance requirements established by the Kitchen Manufacturers Association (KCMA). The KCMA Performance & Construction Standards ANSI/KCMA A161.1 is recognized and overseen by the American National Standards Institute. This standard also meets the HUD specification 4910.1 Paragraph 611-1.1, Minimum Property Standards for Housing.

Finished Cabinetry



Unfinished Cabinetry

