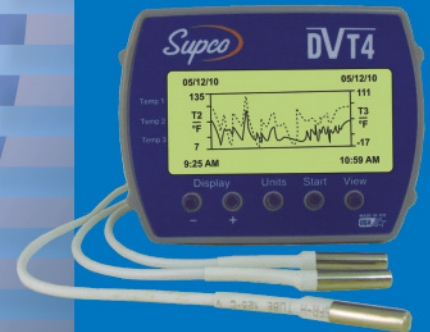


2012 Catalog Supplement

Edition 23 Volume 3



Supco



SEALED UNIT PARTS CO., INC.

Table of Contents

PRODUCTS	PAGE
AC Hard Starts	12
Air Pressure Switch Kits	20
Blow Out Valve	21
Camstat Controls	19
Capillary Tubing	21
Chemicals	20
Commercial Controls	16
Compressor Terminal Repair Kit	21
Contactors	20
CPP Series	13
Data Loggers	4, 5
Defrost Timers	22
Dryer Cleaning Kits	23
Enviro Meters	7, 8, 9
Icemaker Replacement Kits	22
Igniters	18
Infrared Thermometers	11
LED Flashlight	20
Motors/ Motor Bracket	22
Oven Range Igniter	23
Range Products	23
Refrigeration Condensate Pans	17
Refrigerator Door Gaskets	23
Refrigeration Hard Start Kits	15
Refrigerant Leak Detectors/Scale	10
Relays	16, 22
Sicom Condensate Pumps	17
Surge Protectors	14
Temperature Alarms	6
Tools	20
Universal Humidifier Solenoids	21
UV Drier	21
Vacuum Gauges	3
Water Guard	17



Send Orders to:

Sealed Unit Parts Co., Inc.

2230 Landmark Place

Allenwood, NJ 08720 USA

Or Call (800) 333-9125 Or Fax (800) 458-2818

VACUUM GAUGES

MADE IN THE
USA

VG640 Series Vacuum Sentry

Combining unmatched performance with ultimate productivity, The Vacuum Sentry (VG640 Series) guards system service activity and provides notification when pre-set alarm thresholds are reached. Choose from the VG640 with local audible and visual alarms or the VG640T which adds the remote alarm (R100) with audible, visual and vibration alarms.

Features / Benefits

- Unmatched Resolution (as low as 0.5 micron)
- 1/2 Second Response Time (update rate)
- Backlit LCD
- Local Audible and Visual Alarm
- Auto Shut off
- Built in Hanger
- User Addressable Remote Alarm(R100) available
- One Year Warranty

Applications

- While the technician is servicing another system, the Vacuum Sentry can send a signal to the remote alarm (R100) up to 400 feet away.



"Green" Backlight



Alarm Condition

Models

PART NO.	DESCRIPTION
VG640	Vacuum Sentry with Local Alarms. R100 compatible but not included.
VG640T	Vacuum Sentry with Local Alarms & Remote Alarm (R100 included)
R100	Remote Alarm (Audible, Visual & Vibration)

VG640/VG640T Specifications

Sensor Type	Thermistor
Connector Type	Standard 1/4 inch male flare fitting.
Vacuum Range	0 – 19,000 Micron (0 – 2,600 Pascal).
Resolution	0-140: 0.5 Micron 140-400: 1 Micron 400-800: 2 Micron 800-2000: 5 Micron 2000-6000: 20 Micron 6000-9000: 100 Micron 6000-16000: 200 Micron 16000-19000: 1000 Micron
Units	Micron, milliBar, Pascal, Torr, milliTorr
Accuracy	+/-10% or +/-10 Micron, whichever is larger (50 to 2000 Microns) at 75°F
Update Rate	0.5 sec.
Alarm	Audible and visual alarm for high and low vacuum
Remote Alarm	Up to 400ft* remote audible, visual and vibrating alarm for high and low vacuum
Alarm Volume	87 dB for both unit and remote
Operating Temperature Range	0°F to 150°F (-17°C to 65°C)
Overpressure	800 PSI max (55 Bar)
Power Source	3 AA Batteries
Battery Life	600 Hours continuous usage, with battery indicator.
Auto Shutoff	8 hours when alarms are active. When alarms are disabled: <ul style="list-style-type: none"> • 10 minutes when vacuum reading is above 19,000 Microns • 1 hour when vacuum reading is below 19,000 Microns
Weight	6 oz
Dimensions	5.5" H X 2.75" W X 1.5" D



Front (R100)



Integrated Belt Clip

R100 Remote Alarm Specifications

Distance from VG640/VG640T	Up to 400 ft*
Alarm	Audible, visual and vibrating alarm
Alarm Volume	87 dB
Operating Temperature Range	-20°F to 160°F (-28°C to 70°C)
Power Source	9 V Battery
Battery Life	45 Hours continuous usage, with low battery audible indicator.
Weight	3 oz
Dimensions	5.0" H X 2.5" W X 1.0" D

*Distance is measured when the remote is within a direct line of sight of the Vacuum Sentry. Obstructions between the remote and the Vacuum Sentry can reduce this distance.

MORE PRODUCT CHOICES

VG64S Single Port Digital Vacuum Gauge



VG64 Digital Vacuum Gauge



With resolution as low as 1 micron and 1/2 second response time, the VG64 provides accurate measurements, FAST. It makes evacuating a system EASY.

Features/Benefits

- Ultra Fine Resolution (as low as 1 Micron)
- 1/2 Second Response Time
- Auto Shut Off
- Built in Hanger
- Easy Access Cleaning Port
- Measures Vacuum in 7 International Units

Accessories

VG6	Vacuum Gauge Coupler
10475	120 Volt AC Adapter
10740	Vinyl Case

DATA LOGGERS

DVT4

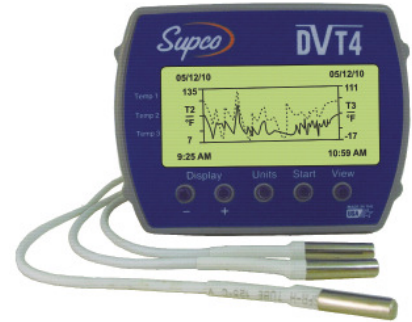
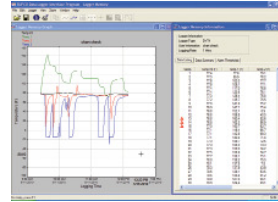
Data View Data Logger - Four (4) Channel Temperature Data Logger with Display



INSTANTLY record and view up to 4 temperatures using 1 internal and 3 external sensors. The large, clear display shows all channels simultaneously, as well as the temperature difference between channels. Up to 87,000 data points are available for download to your PC for further analysis.

Features / Benefits

- Text Display: Real time temperature, logging summary, sample rate, memory used and memory left.
- Graph Display: Shows measurement trends with scrolling feature.
- Visual over and under alarm indicators.
- Internal probe temperature range 15°F to 150°F (-10°C to 65°C).
- External probe temperature range -40°F to 160°F (-40 to 70°C).
- USB connection (cable included).
- Compatible with Windows™ 98SE/ME, 2000, XP, Vista and Windows™ 7. Compatible with 32 and 64 bit systems.
- Includes three (3) 15 ft. temperature probes (extendable to 300 ft.)



Applications:

- Refrigerators/Freezers
- Greenhouses
- Commercial Refrigeration Systems
- Florists
- Wine Storage
- Museums
- Medical Storage Facilities
- Laboratories

Software Specifications

PC Interface	USB port. USB cable is included
Sampling Interval	User selectable from 1 second to 18 hours, in 1 second increments.
Data Security	Unique factory set logger ID. Recording session counter. Password protected calibration.
Operating System Compatibility	Windows® 98SE, ME, 2000, XP, Vista and 7. Compatible with 32 and 64 bit systems. Not compatible with Windows NT or Windows 95.
Minimum System Requirements	5MB of free disk space, 800 x 600 screen resolution, 1 free USB port.
Recording Start	On button press, immediate after setup, or at a user specified date and time.
Recording Mode	Stop on memory full, or continuous recording with memory rollover
Real Time Status	Visual indication through the LCD. Software real time status.
User Calibration	Password protected calibration for each channel.
User Information	Up to 30 characters
Logger Channels	User selectable. Disabling channels increases the storage capacity of the other channels.
Units	US and Metric
Data Format	Exportable to text or Excel files.

Logger Specifications

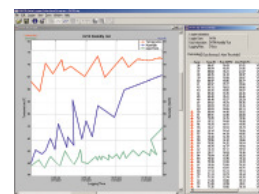
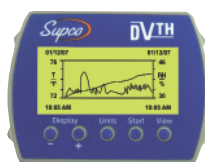
Sample Storage Capacity	21,760 points for 4 temperatures, 29,013 points for 3 temperatures, 43,520 points for 2 temperatures, 87,040 points for single temperature.
Sample Rate	User selectable 1 second to 18 hour
Alarms	Visual over and under alarm indicator for all 4 channels
Calibration	User single point offset calibration is available through software for all temperature channels. Calibration can be password protected.
Operating Temperature	15°F to 150°F (-10°C to 65°C)
Storage Temperature	-5°F to 160°F (-20°C to 70°C)
Time Accuracy	+/-100ppm@75°F
Internal Probe Temperature Range	15°F to 150°F (-10°C to 65°C)
External Probe Temperature Range	-40°F to 160°F (-40°C to 70°C)
Temperature Accuracy	+/-1°F (0.5°C)
Temperature Resolution	0.1°F or 0.1°C
Dimensions	4" x 3.05" x 1.5" (10.2cm x 7.7cm x 3.8cm)
Weight	7.0 oz (200g)
Power Source	Three AA batteries (included)
Battery Life	1 year continuous use, 2 years average use. The logger automatically turns itself OFF after 1 hour, when not logging. Turn ON by pressing any button

MORE PRODUCT CHOICES

DVTH

Data View Data Logger

Temperature & Humidity Logger with Display



DATA LOGGERS

SL400 SERIES MINI DATA LOGGERS w/DISPLAY



Choose from Temperature, Humidity and Dew Point, or Temperature only Data Logging in a miniature, self-contained device. The SL400 Series Data Loggers provide concise measurements for critical environmental conditions.

SL400TH

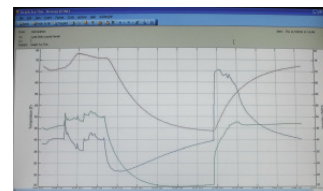
Measures Temperature, Humidity and Dew Point Simultaneously

Features / Benefits

- Windows™ 98SE, ME, 2000, XP, Vista and 7. Compatible with 32 and 64 bit systems.
- **Not compatible with Windows™ 95 or NT**
- PC, delayed start or push button recording control
- Visual alarm indication
- User selectable stop on memory full or memory rollover for continuous recording
- Real time monitoring on display
- User selectable language (English/French/Spanish) during installation.
- Selectable °F / °C display
- USB Interface standard (cable included)

For Temperature and/or Humidity Sensitive Applications:

- Refrigerators/Freezers
- Greenhouses
- Commercial Refrigeration Systems
- Florists
- Wine Storage
- Museums
- Medical Storage Facilities
- Laboratories



SL400T

Measures and Displays Temperature Only

SPECIFICATIONS

Sample Point Capacity	43,344 for temperature only. 21,672 for temperature, humidity and dew point.
Sample Rate	1 Second to 18 Hours
Alarms	Visual over and under alarm indicator for temperature and humidity
Temperature Range	-4°F to 140°F (-20°C to 60°C)
Temperature Accuracy	+/-1°F (0.5°C)
Temperature Resolution	0.1°F or 0.1°C
Relative Humidity Range	0% to 99%RH, non condensing. (SL400TH only)
Relative Humidity Accuracy	+/- 2%RH, from 10% to 90% RH (SL400TH only)
Relative Humidity Resolution	0.1% RH (SL400TH only)
Time Accuracy	+/- 100 ppm @ 75°F
Display	Displays real time temperature and relative humidity (SL400TH) Displays logging status and alarm status
Storage Temperature	-4°F to 160°F (-20°C to 70°C)
Power Source	3.0 V (CR2032) Lithium coin cell battery (Included)
Battery Life	3 Years (Typical)
Dimensions	3" x 1.6" x 0.6" (7.6cm x 4.0cm x 1.5cm)
Weight	1.0 oz (28g)
Calibration	Password protected single point offset calibration available through software.

MORE PRODUCT CHOICES

SL300 SERIES - MINI DATA LOGGERS

- For broader temperature applications
- Temperature Range: -40°F to 185°F (-40°C to 85°C)



CHARACTERISTICS	SL400TH	SL400T	SL300TH	SL300T
Temperature	X	X	X	X
Humidity (non-condensing)	X		X	
Displays Real-Time Temperature	X	X		
Displays Real-Time Humidity	X			

TEMPERATURE ALARM

TA33

Temperature Alarm with Display & Battery Backup



Set your temperature threshold and the TA33 provides reliable protection for your temperature sensitive areas. The battery backup allows continuous monitoring even during power outages. The easy to read display shows current Temperature, Alarm Status, Over/ Under mode indicator and Alarm Set Point and Temperature.

Features / Benefits

- Adjustable range from -40°F to 160°F (-40°C to 71°C)
- Back Lit Display
- 90 db audible alarm
- Adjustable alarm temperature ranges
- Built-in terminals for remote alarm or telephone dialer connection
- Switch for 'No delay' or '1 hour delay'

Applications

- Food Markets, Convenience Stores, Supermarkets
- Restaurants
- Florists, Greenhouses
- Laboratories, Pharmaceutical Storage Facilities
- Refrigerated Transport, Cold Storage Facilities
- Computer Rooms



Specifications

Alarm Adjustment Range	-40°F to 160°F (-40° to 71°C)
Temperature Accuracy	+/- 2°F (+/- 1°C)
Alarm Channels	1
Probe	Precision Thermistor with 6 ft. cable (21301)
Sensor Type	Thermistor
Maximum Probe Extension	200 ft
Unit Operating Temperature Range	-10°F to 130°F (-23°C to 54°C)
Remote Alarm Connections	Screw type, 120VAC, 10 Amps.
Power	12 V Adapter 120 VAC with 6 ft. cable included (220V available). 24 Hrs 9V Battery backup.
Case	Hi-impact thermoplastic
Mounting	Flat Surface, external holes provided
Dimensions	4.8" x 3.2" x 1.4" (12.2cm x 8.1cm x 3.6cm)
Warranty	1 year

Accessories

21301	Probe
21387	10' Probe Extension
21392	50' Probe Extension
ADTA	Phone Dialer

MORE PRODUCT CHOICES



TA22

Digital Display Temperature Alarm

- Temperature Range; -40°F to 160°F
- Audible and Visual Alarm
- Programmable Alarm Delay
- Programmable Setting for "Alarm on OVER" or "Alarm on UNDER"
- °F and °C Selectable
- Relay Contacts
- AC Adapter included



ADTA

Auto Dialer For Temperature Alarms

- Call up to 4 telephone numbers
- 16 second message
- LCD display

For use with THA2, TA6, TA2, TA22 & TA33



TA6

Dual Set Point, Single Zone Temperature Alarm

- Temp. Range -10°F to 80°F
- Alarm Limits for Rise & Fall
- Audible & Visual Alarms
- No Delay or 1 Hour Delay
- Relay Contacts



TA7

Battery Operated, Single Zone Temperature Alarm

- Temp. Range -10°F to 80°F
- Alarm Limits for Rise Only
- Audible & Visual Alarms
- No Delay or 1 Hour Delay



TA2

Single Zone Temperature Alarm

- Temp. Range -10°F to 80°F
- Alarm Limits for Rise OR Fall
- Audible & Visual Alarms
- No Delay or 1 Hour Delay
- Relay Contacts



THA2

Temperature & Humidity Alarm

- Temp. Range -40°F to 140°F
- Humidity Range 0% to 95%
- Displays Temp, Humidity & Dew Point

- Alarm Limits
- Audible & Visual Alarms
- Selectable 0 to 2 Hour Delay

- Relay Contacts
- Log up to 170 Days
- Software Included

ENVIRO METERS



EM5

Environmental Meter - Measures 5 Environmental Parameters

Features / Benefits

- Measures Air Velocity (fpm) and Air Volume (cfm)
- Measures Sound in dB
- Measures Temperature and Humidity (°F/°C)
- Measures Light (Lux)
- Standard and Metric units
- Backlit LCD Display
- Min/ Max/ Avg/ DIF modes
- Data Hold
- Auto-ranging
- Auto Power Off
- Low Battery Indicator
- One-Hand Operation
- Air Measurement Set up and Register
- CFM Chart included
- Carrying Case included
- Instrument Tripod included
- One Year Warranty

Measurement Specifications

RANGE	RESOLUTION	ACCURACY
Temperature		
14°F to 140°F (-10°C to 60°C)	0.1°F (0.1°C)	+/- 2.7°F (+/- 1.5°C)
Relative Humidity		
20% RH to 80% RH	0.1% RH	+/- 3% RH @ 75° F
< 20% RH and > 80% RH	0.1% RH	+/- 5% RH @ 75° F
Sound Level		
30 dB to 130 dB	0.1 dB	+/- 1.5 dB
Light Level		
0 to 2000 Lux	1 Lux	+/- 5% of Rdg plus 10
2001 LUX to 20,000 Lux	10 Lux	+/- 5% of Rdg plus 10
20,001 LUX to 50,000 Lux	100 Lux	+/- 5% of Rdg plus 10
Air Flow		
1.6 ft/s to 65.7 ft/s	0.1 ft/s	+/- 3% of Rdg plus 10
0.5 m/s to 20 m/s	0.1 m/s	+/- 3% of Rdg plus 10
0.9 knots to 38.9 knots	0.1 knots	+/- 3% of Rdg plus 10
1.8 km/h to 72 km/h	0.1 km/h	+/- 3% of Rdg plus 10
Air Volume		
0 to 999,900 CFM	0.1 to 100 CFM	+/- 3% of Rdg plus 10
0 to 999,900 CMM	0.1 to 1000 CMM	+/- 3% of Rdg plus 10



Applications

- Identify Air Flow Problems
- Air Balancing
- Air Quality
- Measure Light Levels
- Measure Damaging Sound Levels
- Ensure Acceptable Sound Levels For HVAC Systems

General Specifications

Display	4 1/2 Digit Backlit LCD
Response Time	2/second (app.)
Operating Temperature	14°F to 140°F (-10°C to 60°C)
Storage Temperature	14°F to 122°F (-10°C to 50°C)
Power Requirements	9 V Battery (included)
Weight	15.3 oz. (430 g)
Dimensions	11" x 3.5" x 2" (280mm x 89mm x 50mm)

M1000D

Digital Insulation Resistance Tester

The versatile M1000D provides user selectable test voltage ranges of 250V / 500V / 1000V to test insulation resistance and can also be used to measure AC voltage up to 750 VAC.

Features / Benefits

- User selectable resistance and voltage ranges
- Large backlit LCD [3.25" (83mm) x 2" (51mm)]
- Data hold button
- Auto power off after 15 minutes
- Low battery indicator
- 1-year warranty

Applications

- HVAC/R Compressors
- Appliances
- Motors
- Controls



ENVIRO METERS

EM Series

Enviro Meters measure critical HVAC/R parameters to maximize productivity and performance

EM10

Temperature & Humidity Meter

Diagnose and solve HVAC system problems

- Measures Temperature, Humidity & Dew Point
- Temperature Range: 14°F to 122°F
- Humidity Range: 0% to 99.9% RH
- Min/ Max/ Avg
- Data Hold
- Backlit LCD
- Auto power off
- Hard Carrying Case included

Specifications

Temperature range	14°F to 122°F (-10°C to 50°C)
Humidity range	0% to 99.9% RH
Temperature Resolution	0.1°F (0.1°C)
Humidity Resolution	0.1% RH
Temperature Accuracy	±1.8°F (± 1.0°C)
Humidity Accuracy	3% RH (5 to 95% RH)
Battery	1.5V AAA x 3 (included)
Dimensions	4.8" X 2.4" X 1.2" (121mm X 60mm X 30mm)
Weight	6.2 oz (180g)



EM20

Thermo-Anemometer

Diagnose and solve air flow problems

- Measures fpm, m/s, mph, km/h, kts, Beaufort Scale
- Measures °F / °C
- Velocity Range: 80 fpm to 4000 fpm
- Temperature Range: 14°F to 122°F
- Min/ Max
- Data Hold
- Backlit LCD
- Auto power off
- Hard Carrying Case included

Specifications

Velocity Range	80 fpm to 4000 fpm, 0.4 m/s to 20 m/s
Temperature Range	14°F to 122°F (-10°C to 50°C)
Velocity Resolution	1 fpm (0.1 m/s)
Temperature Resolution	0.1°F (0.1°C)
Battery	1.5V AAA x 3 (included)
Dimensions	6.2" X 2.4" X 1.2" (157mm X 60mm X 30mm)
Weight	6.3 oz. (180g)



EM30

Tachometer

Analyze and solve motor rotation problems

- Measures rpm & rps
- Range: 100 rpm to 30,000 rpm
- Min/ Max
- Data Hold
- Backlit LCD
- Auto power off
- Hard Carrying Case included

Specifications

Range	100 rpm to 30000 rpm / 1.7 rps to 500 rps
Resolution	0.1 rpm for 100 rpm to 999.9 rpm 1 rpm for 1000 rpm to 30000 rpm 0.1 rps for 1.7rps to 100rps 1 rps for 100 rps to 500 rps
Accuracy	±0.1% reading for 100.0 rpm to 9,999 rpm ±0.02% reading for 10,000 rpm to 30,000 rpm
Auto Power Off	2 min. (app.)
Battery	1.5V AAA x 3 (included)
Dimensions	4.7" X 2.4" X 1.2" (121mm X 60mm X 30mm)
Weight	6.3 oz (180g)



ENVIRO METERS

EM60

Dual Differential Thermometer

Make fast inlet / outlet temperature comparisons

- Dual Thermocouple (J, K) inputs
- Temperature Range (K): -328°F to 2372°F
- Measures T1, T2 & T1-T2
- High & Low Alarms
- Data Storage
- Min/ Max/ Avg for T1 & T2
- Data Hold
- Backlit LCD
- Auto power off
- Hard Carrying Case included
- Includes two (2) K-type thermocouples

Specifications

Range	K-Thermocouple: -328°F to 2372°F (-200°C to 1300°C) J- Thermocouple: -328°F to 2192°F (-200°C to 1200°C)
Resolution	0.1°F (0.1°C)
Best Accuracy	
K-Thermocouple	± 0.2% of Reading ± 2°F (± 0.1% of Reading ± 1.4°F)
J- Thermocouple	± 0.2% of Reading ± 2°F (± 0.1% of Reading ± 1.4°F)
Battery	1.5V AAA x 3 (included)
Dimensions	4.8" X 2.4" X 1.2" (121mm X 60mm X 30 mm)
Weight:	6.2 oz (180g)



EM80

Sound Level Meters

Analyze and solve excessive sound level problems

- Range: 30 dB to 120 dB
- Auto or Manual Range
- Analog Bar Indicator
- Field Calibratable
- Backlit LCD
- Auto power off
- Hard Carrying Case included

Specifications

Frequency Range	31.5Hz to 8KHz
Measuring Range	30dB to 120dB
Frequency Weighting	A
Resolution	0.1 dB
Accuracy	1.5 dB (under 94 dB)
Four Ranges	60dB / 80dB / 100dB / 120 dB
Time Response	Analog bar: 0.25 sec / Digital: 0.75 sec
Operating Temperature	-32°F to 104°F (0°C to 40°C)
Operating Humidity	10% to 80% RH
Battery	1.5V AAA x 3 (included)
Dimensions	6.1" X 2.4" X 1.2" (156mm X 60mm X 32 mm)
Weight:	5.2 oz (180g)



EM90

Dual Thermometer (Infrared & Thermocouple)

Choose the most convenient method for the application

- IR Range: -58°F to 518°F
- Thermocouple Range (K): -328°F to 2372°F
- Min / Max / Avg
- Data Hold
- Backlit LCD
- Auto power off
- Hard Carrying Case included
- Includes one (1) K-type thermocouple

Specifications

Temperature Range	
Infrared	-58°F to 572°F (-50°C to 300°C)
K-Thermocouple	-328°F to 2372°F (-200°C to 1300°C)
Resolution	0.1°F (0.1°C)
Best Accuracy	
Infrared	± 1.5% of reading ± 4°F F (± 1.5% of Reading ± 2°C)
K-Thermocouple	± 0.1% of Reading ± 1.4°F (± 0.2% of Reading ± 1°C)
Emissivity	0.95
Optical Ratio	2:1
Laser Power	less than 1 mw
Battery	1.5V AAA x 3 (included)
Dimensions	4.8" X 2.4" X 1.2" (121mm X 60mm X 30mm)
Weight	6.2 oz (180g)



REFRIGERANT LEAK DETECTORS

HLD200

Refrigerant Leak Detector

By pinpointing a system leak quickly, the HLD200 takes the time and frustration out of leak detection. Pump driven, and with five (5) sensitivity levels, large or small leaks can be found efficiently. Too loud for the audible tick? The seven segment LED scale identifies when the leak is found.



Features / Benefits

- Detects all halogen refrigerants and blends
- Auto zero when powered on
- High efficiency pump for fast response
- Audible Tick
- Seven segment LED indicators
- 12" Gooseneck
- Replaceable sensor tip
- Protective sheath included
- Hard carrying case included
- Extra sensor tip (p/n HLDTIP) included
- One year warranty

Specifications

Sensor Type	Negative Corona
Sensitivity	0.1 oz/ yr
Sensitivity Levels	5
Audio Indicator	Variable Tick
Visual Indicator	Flashing LED
Warm Up Time	6 sec
Response Time	< 1 sec
Duty Cycle	Continuous
Probe Length	12"
Operating Temp	32° to 125°F
Power Source	2 X AA (included)
Battery Life	30 hrs



UVL200

Ultraviolet Leak Detection Light & Glasses

Features / Benefits

- 9 LED Bulbs for high intensity
- Instant on
- Impact resistant Glasses
- 3 AAA batteries (included)



REFRIGERANT SCALE

PCS220

Programmable Refrigerant Charging Scale

Using the latest technology, the PCS220 Programmable Refrigerant Charging Scale makes charging a system fast and reliable. Just set the desired amount of refrigerant to charge the system and the PCS220's built in solenoid delivers the precise weight, then sounds the alarm signaling the completed job.

Features / Benefits

- Compatible with ALL refrigerants
- Range: 0 – 220 lbs (0 – 100 kg)
- Solenoid activated for real-time charging
- User Programmable
- Audible Alarm
- Built-in memory for all settings
- Measures weight in lbs, ozs and kgs
- Large LCD display w/ backlight
- Auto power off (15 mins)
- Field Calibration available
- Hard carrying case included
- 1 year warranty

Specifications

Capacity	220 lbs (100 kg)
Accuracy	0.5% of Reading
Best Resolution	0.005 lbs/ 0.1 oz/ 2 g
Auto Shut Off	15 min
Operating Temperature	50 - 122°F (10 – 50°C)
Weight	6.03 lbs (2.74 kg)
Dimensions	9.1 in x 9.1in x 2.4 in (23 cm x 23 cm x 6 cm)
Power Source	5 X AA (included)
Battery Life	60 hrs



Applications

- HVAC and Refrigeration service
- Precise measurement of refrigerant containers
- Automated charging of refrigerant systems



INFRARED THERMOMETERS

PIT6L

Dual Hand Held IR Thermometer (Infrared & Ambient)

Non-contact plus ambient measurements in the palm of your hand



Features / Benefits

- 6:1 Optical Ratio
- Single dot laser targeting
- Ambient temperature (Tamb)
- °F/°C selectable
- Data Hold
- Backlight
- Low battery indication
- Data hold
- Backlit LCD
- Auto power-off
- One year warranty

Specifications

Temperature Range	-4°F to 518°F (-20°C to 270°C)
Accuracy	± 9°F for -4°F to 32°F (± 5°C for -20°C to 0°C) ± 1.5% of Reading ± 6°F for 32°F to 518°F: (± 1.5% of Reading ± 3.0°C for 0°C to 270°C)
T_{amb} Range	32°F to 122°F (0°C to 50°C)
Resolution	1°F (1°C)
Optical Ratio	6:1
Emissivity	0.95
Over Range Indication	"OL" or "-OL"
Auto Power Off	after 20 sec.
Battery	3 X AAA (included)
Dimensions	3.9" X 2.3" X 0.9" (98mm X 58mm X 22 mm)
Weight	2.5 oz (72g)

LIT6P

Dual Laser IR Thermometer (Infrared & probe)

Non-contact plus probe temperature measurements



Features / Benefits

- 2 measurement modes:
Infrared & Probe Sensor
- 6:1 Optical Ratio
- Single dot laser targeting
- 4" Stainless Steel Probe
- °F/°C selectable
- Data Hold
- Low battery indication
- Carrying Case included
- One year warranty

Specifications

INFRARED	
Temperature Range	-4°F to 518°F (-20°C to 270°C)
Resolution	0.1°F (0.1°C)
Accuracy	± 9°F for -4°F to 32°F (± 5°C for -20°C to 0°C) ± 1.5% of Reading for 32°F to 518°F (0°C to 270°C)
Optical Ratio	6:1
Emissivity	0.97
PROBE SENSOR	
Temperature Range	-58°F to 518° F (-50°C~270°C)
Best Resolution	0.2°F (1°C)
Accuracy	1.5% of Reading for -58°F to -4°F (-50°C to -20°C) 1% of Reading for -4°F to 392°F (-20°C to 200°C) 2% of Reading for 392°F to 518°F (200°C to 270°C)
Over Range Indication	"OL" or "-OL"
Auto Power Off	After 30 seconds
Battery	3 X AAA (included)
Dimensions	7.1"x 1.9"x 1.7" (182mm x 49mm x 43mm)
Weight	4.2 oz (120g)

MORE PRODUCT CHOICES

LIT11TC

Laser Infrared Thermometer

- 11:1 Optical Ratio
- -76°F to 932°F
- K-Type Thermocouple
- Backlight
- Carrying Case Included



PIT1

Pocket Infrared Thermometer

- 1:1 Optical Ratio
- -27°F to 428°F



AC HARD STARTS



ULTRA Series 2-wire mechanical potential relay hard start

Incorporating OEM approved technology, the UltraStart hard start kits provide reliable starting ability for all single phase compressors. Maximum performance and productivity with an easy 2-wire installation.

Features / Benefits

- OEM Approved Technology
- Voltage Sensing
- Instant Re-start
- Easy 2-wire installation
- 2 Year Warranty

PART NO.	APPLICATION	CAPACITOR SIZE	REPLACES
MPR5	1 to 3 hp	189-277 μ F; 330V	Kickstart® TO-5
MPR1	3.5 to 5 hp	270-324 μ F; 330V	Kickstart® KS-1

Applications

For use on all Single Phase Reciprocating, Scroll and Rotary Compressors; 208V, 230V and 265V



3 Series 3-wire mechanical potential relay hard start

The 3 Series Hard Starts provide the service professional with an OEM option when the application calls for a hard start. Combining a potential relay and start capacitor the 3 Series provides a true 3-Wire solution.

Features / Benefits

- Voltage Sensing
- Instant Re-start
- 35 Amp Relay Contacts
- 208/ 240 Volts
- Includes EZ Snap Bracket for quick installation

PART NO.	APPLICATION	CAPACITOR SIZE	REPLACES
3W1	1 – 3 hp	88 – 108 μ F; 330V	CSRU1
3W2	3.5 – 4.5 hp	189 – 227 μ F; 330V	CSRU2
3W3	4 – 5 hp	270 – 324 μ F; 330V	CSRU3

Applications

- All 208/ 240 V Single Phase Compressors
- Scroll compressors
- Reciprocating compressors
- Can be used with Single or Dual Run Capacitors

MORE PRODUCT CHOICES



SPP Series for reliable, field proven, UL recognized PTC style Hard Start Kits

Features

- Economic
- Easy 2-wire Installation

PART NO.	VOLTAGE	APPLICATION	TORQUE INCREASE
SPP5	90 – 277 VAC	1/2 to 10 hp	300%
SPP6	90 – 277 VAC	1/2 to 10 hp	500%
SPP7S	90 – 277 VAC	1/2 to 10 hp	600%



“E” Class for Electronic Potential Relay (EPR) style Hard Start Kits

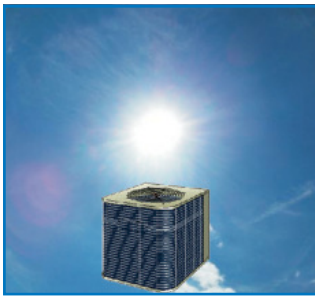
Features

- Voltage Sensing
- Instant Re-start
- Easy 2-wire Installation

PART NO.	VOLTAGE	APPLICATION	CAPACITOR SIZE (μ F)
SPP5E	170 – 277 VAC	1/3 to 2 hp	43 to 52
SPP6E	170 – 277 VAC	1/2 to 3 hp	88 to 106
SPP8E	170 – 277 VAC	1 to 10 hp	189 to 227

CPP SERIES Compressor Protection Package

Enhance the performance and extend the life of air conditioning systems. Coupling a Potential Relay Hard Start with a Surge Protector, SUPCO's CPP Series minimizes stress on the compressor and defends the system against voltage surges and rising energy costs.



A HARD START KIT

- Starts the air conditioning system in difficult times
- Protects it from potentially damaging start-up current
- Reduces energy costs

Start-up is the most difficult time in the life of any electrical equipment. An air conditioner consumes more power on start-up than any other device in the home. Current is 10 times higher during this time and can potentially damage the compressor's motor...and an air conditioning system may start-up over 6,000 times during a single cooling season.



A SURGE PROTECTOR

- Protects the air conditioning system from potentially damaging power surges.

Each year, the average home or business experiences more than 300 potentially damaging surges. Today's HVAC equipment is more sensitive to this unavoidable environmental condition. Next to the cost of a home and car, this equipment is a homeowner's most expensive possession...yet there is no protection for it! The SCM150 provides 100,000 Amps of Surge Protection and it comes with a "Connected Equipment Guarantee" up to \$10,000 if it does not properly protect the equipment; \$1,000 per occurrence.



CPPMPR5



CPP8E



CPP3W2

Choose from 6 different styles to match system needs.

PART NO.	DESCRIPTION	CONNECTION TYPE	POTENTIAL RELAY TYPE	COMPRESSOR SIZE
CPPMPR1	SCM150 & MPR1	2 - wire	Mechanical	3.5 - 5 hp
CPPMPR5	SCM150 & MPR5	2 - wire	Mechanical	1 - 3 hp
CPP8E	SCM150 & SPP8E	2 - wire	Electronic	1 - 10 hp
CPP3W1	SCM150 & 3W1	3 - wire	Mechanical	1 - 3 hp
CPP3W2	SCM150 & 3W2	3 - wire	Mechanical	3.5 - 4.5 hp
CPP3W3	SCM150 & 3W3	3 - wire	Mechanical	4 - 5 hp

SURGE PROTECTORS

SCM60 & SCM150 Surge Arrestors

Protect your equipment with SUPCO's Surge Arrestors. With multiple levels of protection, we can cover all your needs.

Features / Benefits

- Easy Installation at Disconnect or Panel
- Weatherproof Housing
- Green LED to indicate Surge Protection is present

Applications

SURGE PROTECTION FOR:

- Air Conditioning Compressors
- Heat Pump Compressors
- Refrigeration Compressors
- Pumps
- Motors
- Electro-Mechanical Devices



Specifications

	SCM60	SCM150
Service Voltage	120/ 240 Volt, Single Phase	120/ 240 Volt, Single Phase
Maximum Surge Current	60,000 Amps	100,000 Amps
AC Protection Modes	L-L, L-G	L-L, L-G
Voltage Protection	600V L-G	600V L-G
Rating (VPR)	1200 V L-L	1200 V L-L
Response Time	< 5 ns	< 5 ns
Operating Frequency	0 – 400 Hz.	0 – 400 Hz.
Nominal Discharge Current (In)	10,000 Amps	10,000 Amps
Short Circuit Current Rating (SCCR)	10,000 Amps	10,000 Amps
Max. Current Over Voltage (MCOV)	150V L-G 300V L-L	150V L-G 300V L-L
Diagnostics	Green LED lit - Indicates Surge Protection Present	Green LED lit – Indicates Surge Protection Present
Installation Point	Electrical Panel, Electrical Disconnect	Electrical Panel, Electrical Disconnect
Connection Method	Hardwired parallel	Hardwired parallel
Agency Approvals	UL, cUL, ANSI/ IEEE C62.11	UL, cUL, ANSI/ IEEE C62.11
Housing	High Impact Plastic	High Impact Plastic
Housing Size	2 7/8" x 3 3/4" x 2"	2 7/8" x 3 3/4" x 2"
Weight	1 lb.	1 lb.
Warranty	Limited Lifetime	Limited Lifetime

SYC2P27B

Low Voltage Circuit Surge Arrestors

Protection for low voltage control circuit

- 0-24V AC or DC
- 27V Clamping Voltage
- Single pair
- Bi-directional protection
- One Surge Arrestor per circuit



Specifications

Service Voltage	0-24 AC or DC
Clamping Voltage	38 VDC or 27 VAC
Response Time	< 5 ns
Installation	Parallel Hardwire
Housing Size	2"x2"x1"
Weight	1 oz.
Warranty	Limited Lifetime
Connected Equipment Gaurantee	N/A

PROFESSIONAL SURGE PROTECTORS FOR APPLIANCES

Protect ALL your appliances like a PRO

Protection from:

- Power Surges
- Voltage Flicker
- Power Interruptions
- Brownouts

Power Surges: When present the PRO-TECTOR will either clamp the voltage to ground or absorb the energy of the surge.

Power Interruptions, Flicker and Brownouts: When line voltage is interrupted or decreases below 90 Volts, the PRO-TECTOR will start a delay interval, approximately 3 – 5 minutes. After the interval, provided that line voltage is greater than 95 Volts, power will resume.



TECH

4 Models

PART NO.	DESCRIPTION
COOL	Protection for window air conditioner or refrigerator
TECH	Protection for computer, audio and video electronics
HOT	Protection for ovens, microwaves & food processors
WASH	Protection for washers & dryers

REFRIGERATION HARD START KITS



USR Universal Starting Relay with Capacitor for Commercial Refrigeration

Features / Benefits

- For Compressors from 1/2 hp thru 10 hp
- Pre-wired for easy installation
- Potential Relay Technology

Specifications

Operating Voltage	110 to 270 VAC
Application	1/2 to 10 hp
Start Capacitor	108 to 130 μ F; 330 VAC



URC Series 4'N 1 URCO Series offers the most complete solution!

Combines a URCO refrigeration hard start and a closely matched run capacitor.

Features / Benefits

- The Same Benefits as the Ultimate URCO Series
- Closely Matched System Run Capacitor included
- Provides High Torque Start
- 1/4" push-on terminals for run capacitor
- 90° Fusite connector for compressor
- Includes wiring diagram
- Includes wire nuts

PART NO.	DESCRIPTION
URC0810RC	Ultimate Relay, Start Capacitor, Overload and 12.5 μ F Run Capacitor; 1/12 - 1/5 hp
URC0410RC	Ultimate Relay, Start Capacitor, Overload and 15 μ F Run Capacitor; 1/4 - 1/3 hp
URC0210RC	Ultimate Relay, Start Capacitor, Overload and 20 μ F Run Capacitor; 1/3 - 1/2 hp

MORE PRODUCT CHOICES

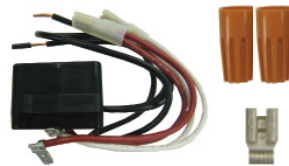


URCO Ultimate Relay Capacitor Overload

Features

- Replaces relay, capacitor and overload for one low price
- Available in popular sizes, ranging from 1/12 hp to 1/2 hp
- "Push-on" compressor terminals, and 1/4" capacitor terminals

PART NO	APPLICATION	VOLTS
URC0210	1/3 to 1/2 hp	120
URC0410	1/4 to 1/3 hp	120
URC0810	1/12 to 1/5 hp	120

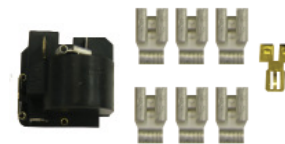


URO Ultimate Relay Overload

Features

- Locked rotor protection, eliminates start winding overheating
- Available in popular sizes, ranging from 1/12 hp to 1/2 hp
- "Snap -on" bracket for easy mounting

PART NO	APPLICATION	VOLTS
URO21	1/3 to 1/2 hp	120
URO41	1/4 to 1/3 hp	120
URO81	1/12 to 1/5 hp	120



UPRO Ultimate Push-on Relay

Features

- Replaces relay and overload for one low price
- Available in popular sizes, ranging from 1/12 hp to 1/2 hp
- "Push-on" relay overload

PART NO	APPLICATION	VOLTS
UPRO21	1/3 to 1/2 hp	120
UPRO41	1/4 to 1/3 hp	120
UPRO81	1/12 to 1/5 hp	120



URSC10 Ultimate Relay Start Capacitor

Features

- Replaces current-type relays
- Provides a boost for hard start and unbalanced systems
- No additional wires required

PART NO	APPLICATION	VOLTS
URSC10	1/20 to 1/2 hp	120

RELAYS



SEPR60 - Universal 2 - Wire Potential Relay

Features / Benefits

- Voltage Sensing Relay
- Instant Restart
- Safety time delay
- Use with any size suitable Start Capacitor



Specifications

Operating Voltage	208 – 277 VAC, Single Phase
Amperage	40 Amps
Motor Power Rating	1 hp - 10 hp
Mounting	Non Positional
Terminals	Qty 3, 1/4" Male Spade

COMMERCIAL CONTROLS

ST100 Series - General Purpose Timer Switches



Features / Benefits

- Economical
- Electro-mechanical Switching
- Switch Rating: 40 A, Resistive
- Single Pole or Double Pole
- Non-corrosive NEMA 1 case

PART NO.	VOLTS	SWITCH	CROSS REFERENCE
ST101	120	SPST	Paragon® 4001-00, Intermatic® T101, Precision® CD101
ST102	240	SPST	Paragon® 4002-71, Intermatic® T102, Precision® CD102
ST103	120	DPST	Paragon® 4003-00, Intermatic® T103, Precision® CD103
ST104	240	DPST	Paragon® 4004-71, Intermatic® T104, Precision® CD104

Note: 240V / 50Hz Available by Special Order



S8000 Series - Commercial Defrost Controls

Designed to meet a wide variety of customer requirements. These electro-mechanical controls are used on many different types of commercial refrigeration equipment, including walk in boxes, reach in boxes, refrigerated cases and condensing units.

Features / Benefits

- Heavy-duty synchronous motor.
- Adjustable Defrost Initiation Frequency: One to six times per day.
- Adjustable Defrost Cycle Duration: 4 to 110 minutes in two-minute increments.
- Contact Arrangements: Electric heat, hot gas, or off cycle defrost available.
- Heavy-duty steel case with electrical knockouts in the sides, back and bottom.



Specifications

- Operating Voltages: 120 or 208/240 VAC, 60 Hz
- Amperage: 40-amp non-inductive @ 120, 208 or 240 VAC
- Maximum hp: 2 hp @ 120, 208 or 240 VAC
- Pilot Duty: 690 VA @ 120, 208 or 240 VAC
- Operating Temperature Range: -35°F to 175°F
- Overall Case Dimensions: 7.697" H x 4.4" W x 3.8" D
- Shipping Weight: S8040 series 3.5 lbs & S8141 series 3.75 lbs.

PART NO.	VOLTAGE	SWITCHING		TIME INITIATED TIME TERMINATED	TIME INITIATED TEMPERATURE OR PRESSURE TERMINATED	PARAGON® MODEL NO.
		NO NORMALLY OPEN	NC NORMALLY CLOSED			
S804100	120	1 NO / 2 NC		YES	NO	8041-00
S804120	240	1 NO / 2 NC		YES	NO	8041-20
S804500	120	1 NO / 1 NC		YES	NO	8045-00
S804520	240	1 NO / 1 NC		YES	NO	8045-20
S814100	120	1 NO / 2 NC		NO	YES	8141-00
S814120	240	1 NO / 2 NC		NO	YES	8141-20
S814500	120	1 NO / 1 NC		NO	YES	8145-00
S814520	240	1 NO / 1 NC		NO	YES	8145-20

Note: 240V / 50Hz Available by Special Order

M814520

EXACT DROP-IN REPLACEMENT MECHANISM for SUPCO S814520 and Paragon® 8145-20

Sold in convenient 6-pack counter display!



SUPCO® is the North American Master Distributor for Siccom® Condensate Pumps

SICCOM®

Mini FLOWWATCH® 2

Mini-split Condensate Pump

- 4 GPH
- 24' Max. Lift
- Vertical Suction
- Lowest Noise Level <21dB
- Thermally protected
- Alarm level to prevent overflow
- Waterproof connections prevent water ingress
- Piston pump provides long life
- Optional Mounting Kit (GC1KFX2010)
- 2 year warranty



DE05LUA720

FLOWWATCH® Design

Mini-split Condensate Pump with plastic duct & installation kit

- Includes mini FLOWWATCH®2 Pump
- Includes over 2 ½ feet of plastic duct
- Includes all mounting hardware
- Pre-mounted and wired in plastic duct
- 2 year warranty



DE05LUA660

PART NO.	DESCRIPTION
DE05LUA520	Mini Flowwatch®2 Condensate Pump (120V)
DE05LUA720	Mini Flowwatch®2 Condensate Pump (240V)
GC1KFX2010	Mounting Kit for Mini Flowwatch®2 Cond. Pumps
DE05LUA660	Flowwatch® Design Pump & Installation Kit (120V)
DE05LUA770	Flowwatch® Design Pump & Installation Kit (240V)

REFRIGERATION CONDENSATE PANS

Designed for durability and long life, these high value pans are unmatched in quality.



Features / Benefits

- Corrosion resistant stainless steel construction
- Available In 120 volts, 208 volts and 240 volts
- Positive evaporation
- Space saving
- High limit safety and float switch operation
- Warranty One Year from date of installation

PART NO.	CAPACITY	WATTS	VOLTS	DISSIPATION RATE PER DAY	FISHER EVAPOWAY® PART NO.
CP801	1 3/4 QT	400	120	3 Gallon	DM04T-1S
CP802	2 1/2 QT	800	120	6 Gallon	DM08S-1S
CP802-240	2 1/2 QT	800	240	6 Gallon	DM08S-S3
CP804	4 1/2 QT	1000	120	10 Gallon	DM10M-S1
CP804-240	4 1/2 QT	1000	240	6 Gallon	DM10M-S3
CP804HD	7 1/2 QT	1000	120	6 Gallon	DM10W-1D
CP804HD-240	7 1/2 QT	1000	240	6 Gallon	DM10W-3D
CP807	7 1/2 QT	1000	120	10 Gallon	DM10W-1S
CP807-240	7 1/2 QT	1000	240	10 Gallon	DM15WW-1D
CP815	15 QT	1440	120	12 Gallon	DM10W-3
CP815-240	15 QT	1500	240	12 Gallon	DM15WW-3
CP816	7 QT	500	120	4.5 Gallon	DM05W-1D
CP817	7 QT	1000	208	8 GALLON	DM10W-2D
CP818	7 QT	1000	208	8 GALLON	DM10W-2S
CP819	7 QT	1500	120	12 GALLON	DM15W1D
CP820	7 QT	1500	208	12 GALLON	DM15W2D
CP821	15 QT	1500	208	12 GALLON	DM15WW-2D

Note: 240V / 50Hz Available by Special Order

MORE PRODUCT CHOICES



- PTC Controlled
- Self Regulating



- Designed for continuous use



PART NO.	CAPACITY	VOLTS	WATTS	EVAPORATION RATE	SIZE
70*	50 oz	117	300	4-5 oz/hr	12 1/4" x 4 3/4" x 3"
30-OS	38 oz	120	160	4-5 oz/hr	10" x 4" x 2 7/8"

* Indicates NSF Approved

WATER GUARD

WG1 - Economical Water Guard

Features / Benefits

- Electronic Alarm detects water to prevent damage, mold and unsafe conditions
- Measures Loud 90 dB Alarm
- 9V DC battery operated (battery not included)
- Low Battery Indicator



FLAT SILICON CARBIDE

SKIT03033

Replaces KIT03033

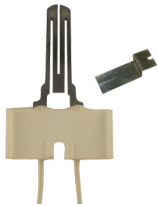
- Steady Current: 4.25 Amps @ 115 VAC
- Max. Current: 5 Amps @ 132 VAC
- Time to Temp: (1800°F): < 17 seconds



SPLT3400

Replaces PLT3400

- Steady Current: 4.25 Amps @ 115 VAC
- Max. Current: 5 Amps @ 132 VAC
- Time to Temp: (1800°F): < 17 seconds



IG404

Replaces: 41-404



IG407

Replaces: 41-407



IG408

Replaces: 41-408



IG409

Replaces: 41-409



IG410

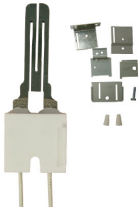
Replaces: 41-410



IG418

Replaces: Goodman® B14010-18S

MORE PRODUCT CHOICES



IG4000 Super Kit

5 Brackets & Hardware
Replaces: 41-402, 41-403, 41-404, 41-405, 41-407, 41-408, 41-409, 41-410, 41-412, 41-414, 41-1090, 41-238, 41-242



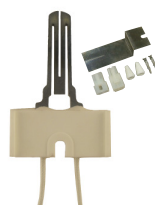
IG401

Replaces: 41-401



IG402K Kit

Replaces: 41-402, 41-408, 41-410, 41-411



IG403K Kit

Replaces: 41-403, 41-404, 41-407, 41-409



IG405

Replaces: 41-405



IG406

Replaces: 41-406



IG411

Replaces: 41-411



IG412

Replaces: 41-412



IG414

Replaces: 41-414

SILICON NITRIDE IGNITERS

S0230K00000S

Replaces 0230K00000S



- Steady Current: 4.25 Amps @ 115 VAC
- Max. Current: 5 Amps @ 132 VAC
- Time to Temp: (1800°F): < 17 seconds

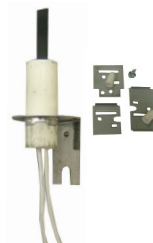
SSN3000

- Robust Design
- <17 sec Time to Temp
- Replaces over 150 OEM igniters
- >50,000 cycles
- 2 year warranty



SSN4000

- Miniature Design
- <10 sec Time to Temp
- Replaces over 150 OEM igniters
- >200,000 cycles
- Replaces Honeywell® Glowfly #Q3200U1004
- 3 year warranty



SSN3016

- Robust Design
- Stronger Physical Durability
- <17 sec Time to Temp
- >50,000 cycles



Satisfy your direct needs

SSN3016 Cross Reference

Goodman® B140105, B1401009, B1401185

Norton® 271NM

Robertshaw® 41-412, 41-414,

Surface Igniter® SN003KS

MORE PRODUCT CHOICES



SSN2000

Silicon Nitride Universal 120 Volt Hot Surface Igniter Kit

- <17 sec Time to Temp
- Replaces over 100 OEM igniters
- >50,000 cycles
- 1 year warranty



SSN24

Universal 24-Volt Silicon Nitride Igniter

- Replaces Honeywell® Q3400A1024
- Compatible with Honeywell® 1st and 2nd Generation Smart Valve
- Includes Igniter and Flame Rod



SIG100 Series

Exact Replacement Round Igniters

- Replaces Exact OEM Round Igniters



SIG1100

Universal Round Igniter Kit

- Replaces all igniters that the SIG1000 does, plus over 70 more (170+)
- Includes 3 Brackets

S106 Series Time Delay Relays

- SPST or SPDT
- Delay on/ off timing



PART NO.	A-1®		TIME DELAY ON	TIME DELAY OFF
	PART NO.	SWITCH ACTION	(seconds)	(seconds)
S1061A4575C	FF582	SPST	35 to 55	50 to 100
S1061A5040C	FF583	SPST	40 to 60	30 to 60
S1061A40100C	FF584	SPST	30 to 50	70 to 110
S1061A5560C	FF585	SPST	45 to 65	40 to 85
S1061B6545C	FF586	SPDT	55 to 70	45 to 80

F47 & F214 Series Fan Controls

- Adjustable Temperature Dial



PART NO.	A-1®		LENGTH (inches)	FAN OFF TEMP.	FAN DIFFERENTIAL
	PART NO.	WIDTH (inches)		(°F)	(°F)
F473TD12025C	FF564	7/16"	3"	90 to 120	25 to 50
F477TD12025C	FF565	7/16"	7"	90 to 120	25 to 50
F21412A14025C	FF562	1-1/16"	3"	60 to 140	25 to 50
F21413A14025C	FF563	1-1/16"	7"	60 to 140	25 to 50

L59 Series Limit Controls

- SPDT Switch
- User Temperature Adjustment



PART NO.	A-1®		FAN OFF TEMP.	FIXED DIFFERENTIAL
	PART NO.	LENGTH (inches)		(°F)
L593BA	FF568	3"	120 to 250	30
L597BA	FF569	7"	120 to 250	30

FA47TS Series Fan Controls w/ Time Start Fan Control

- Built in "Heat Assist" Time Delay
- Adjustable Fan OFF Temperature



PART NO.	A-1®		FAN OFF TEMP. (°F)	FAN DIFFERENTIAL (°F)	TIME DELAY @
	PART NO.	LENGTH (inches)			24 VAC (s)
FA47TS3110	FF566	3"	80 to 110	60 (Fixed)	25 to 60
FA47TS7110	FF567	7"	80 to 110	60 (Fixed)	25 to 60

FAL Series Universal Fan and Limit Controls

- Adjustable fan "OFF" setting
- Adjustable fan differential setting
- Adjustable Limit Temperature



PART NO.	A-1®		FAN OFF TEMP. (°F)	FAN DIFFERENTIAL (°F)	LIMIT TEMP. (°F)	LIMIT DIFFERENTIAL (°F)
	PART NO.	LENGTH (inches)				
FAL3C05TD120A	FF558	3"	90 to 120	25 to 50	150 to 250	30
FAL7C05TD120A	FF559	7"	90 to 120	25 to 50	150 to 250	30
FAL7C20BT120AB	FF594	7"	90 to 120	25 to 50	150 to 250	30

BC7070 (F7070) Blower Control

- Increase Heating Efficiency By Delaying The ON and OFF Cycle Of The Blower Fan.
- Control Voltage: 24 VAC.
- Relay Contacts: SPST.
- Blower On Time: 0 – 240 Seconds Adjustable.
- Blower Off Time: 0 – 240 Seconds Adjustable



FALTS Series Fan and Limit Controls w/ Time Delay

- SPST Switch
- Adjustable Limit Temperature
- Pilot Duty: 40 VA @ 30 VAC & 120 VAC



PART NO.	A-1®		FAN OFF TEMP. (°F)	LIMIT TEMP. (°F)	LIMIT DIFFERENTIAL (°F)
	PART NO.	LENGTH (inches)			
FALTS57C05T120A	FF560	7"	90 to 120	150 to 250	30
FALTS57C65T120A	FF561	7" w/ shield	90 to 120	150 to 250	30
FALTS57C13BT120A	FF591	7" SPDT	90 to 120	150 to 250	30

CIVA5 (FF534) Brown Out Delay Timer

- Short Cycle & Brown Out Protection For Compressors.
- Interlock Time: 5 minutes.
- Under Voltage Protection: Adjustable 16 – 22 VAC.
- Reset Time: 30 Milliseconds.



PR Series Pilot Reigniters

- Prevents Pilot Flames From Extinguishing

PART NO	A1 PART NO	DESCRIPTION
PR24120	FF541	24/120 VAC Hardware Kit , Spark cable
PR2436W	FF543	24 VAC Hardware Kit, Spark Cable, & PR-24 Module
PR2412036W	FF536	24/120 VAC Hardware Kit, Spark Cable & Module



AFC01T110204 (FF535) Attic Fan Control

- Adjustable Fan OFF Temperature: 60°F to 110°F
- Firestat circuit for safety shut off
- SPST



AIR PRESSURE SWITCH KITS

Adjustable Air Pressure Sensing Switch Kits

Ideal for residential and light commercial furnace, electronic air cleaner and humidifier applications



Features / Benefits

- Adjustable Set Points
- Operating Temperature Range: -40°F to 190°F



PART NO.	PRESSURE RANGE (" W.C.)	REPLACES
RSS495011 (RSS49511)	0.25" to 1.0"	RSS-495-11
RSS498013 (RSS49813)	1.0" to 4.0"	RSS-498-13

AFS222121 - Adjustable Air Pressure Sensing Switch

General purpose proving switch designed for HVAC and Energy Management applications.

Features / Benefits

- Senses positive, negative or differential air pressure
- Set Point Range: 0.05" to 12.0" W.C.
- SPDT Switch
- Replaces White Rodgers® 770-1



NS2000031 (NS2000003)

Universal Small Footprint Air Pressure Sensing Switch

Features / Benefits

- Replaces Hundreds of small footprint air switches!
- Includes springs and orifice restrictors
 - Hardware kit included
 - Set Point Range: 0.01" to 10" W.C.

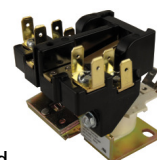


CONTACTORS

SMC11 - 2 Pole Magnetic Line Contactor

Features

- Non-positional
- Includes 4 terminals and 4 screws
- UL File Number E328772
- Replaces MARS® 18001 (exact) and Honeywell® R850B1146, Packard® C18001, GE® 3ARR8, 3ARR9, 3ARR27, 3ARR29 series contactors. 24 volt control 2 poles 240 volt 30 amp load

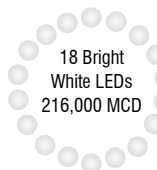


LED FLASHLIGHT

FL6N1 - 6 In 1 Flashlight

Features / Benefits / Operation

- 6 Distinct Functions
- 18 Powerful Ultra Bright White LEDs
- Red Laser Pointer
- 18 Bright White LEDs Emergency Flash
- 6 Powerful UV LEDs Reveal The Invisible
- 6 Powerful Green LEDs Maintain Night Vision.
- Directional Compass: Included in handle



TOOLS

PART NO.	KD NO.	DESCRIPTION
445	KD445	KD Internal Snap Ring Plier
446	KD446	KD External Snap Ring Plier
145	KD145	KD Hose Pinch Off Plier
3975	KD3975	KD Corbin Style Hose Clamp Plier
447	KD447	Replacement Tips for KD445 & KD446



CHEMICALS

HS13001 THREADLOCKER

Unsecured fasteners are one of the major causes of equipment failure causing warranty issues, lack of reliability and unexpected shutdown of equipment. Broad Spectrum THREADLOCKER is a multi-purpose locking agent providing heavy duty service with the ability to disassemble with standard hand tools.

Features / Benefits

- Prevents Fastener loosening
- Provides shock and vibration resistance
- Excellent performance with dissimilar metals and material
- Oil & Chemical Resistant
- Moisture Resistant
- Helps prevent rust and corrosion
- Non-toxic
- Temperature Range of -200°F to 425°F



BLOW OUT VALVE

LD10 - Line Drive Blow Out Valve

Features / Benefits

- Use with CO₂ or Nitrogen
- Two way blow out drive
- For Condensate Line maintenance

Specifications

- Condensate Line Size: 3/4" schedule 40 PVC material
- Hose Connection: 1/4" male flare (with Schrader)



CAPILLARY TUBING

Standard Service Packs

OLD PART NO.	NEW PART NO.	LENGTH	DESCRIPTION
	BC26X16	16 feet	.026 ID X .071 OD
BC5	BC28X10	10 feet	.028 ID X .071 OD
BC1	BC31X10	10 feet	.031 ID X .081 OD
	BC36X12	12 feet	.036 ID X .086 OD
BC2	BC40X12	12 feet	.040 ID X .093 OD
	BC42X12	12 feet	.042 ID X .093 OD
	BC44X12	12 feet	.044 ID X .093 OD
	BC46X12	12 feet	.046 ID X .093 OD
	BC49X11	12 feet	.049 ID X .093 OD
	BC50X11	11 feet	.050 ID X .093 OD
BC3	BC52X12	12 feet	.052 ID X .093 OD
	BC54X11	11 feet	.054 ID X .106 OD
	BC55X11	11 feet	.055 ID X .112 OD
	BC59X10	10 feet	.059 ID X .112 OD
BC4	BC64X12	12 feet	.064 ID X .125 OD
	BC70X12	12 feet	.070 ID X .125 OD
	BC75X9	9 feet	.075 ID X .125 OD
	BC80X10	10 feet	.080 ID X .145 OD
	BC85X9	9 feet	.085 ID X .145 OD
	BC90X7	7 feet	.090 ID X .145 OD

100 Foot Bulk Packs

OLD PART NO.	NEW PART NO.	LENGTH	DESCRIPTION
	BC26X100	100 Feet	.026 ID X .071 OD
BC5-100	BC28X100	100 Feet	.028 ID X .071 OD
BC1-100	BC31X100	100 Feet	.031 ID X .081 OD
	BC36X100	100 Feet	.036 ID X .086 OD
BC2-100	BC40X100	100 Feet	.040 ID X .093 OD
	BC42X100	100 Feet	.042 ID X .093 OD
	BC44X100	100 Feet	.044 ID X .093 OD
	BC46X100	100 feet	.046 ID X .093 OD
	BC49X100	100 Feet	.049 ID X .093 OD
	BC50X100	100 Feet	.050 ID X .093 OD
BC3-100	BC52X100	100 Feet	.052 ID X .093 OD
	BC54X100	100 Feet	.054 ID X .106 OD
	BC55X100	100 Feet	.055 ID X .112 OD
	BC59X100	100 Feet	.059 ID X .112 OD
BC4-100	BC64X100	100 Feet	.064 ID X .125 OD
	BC70X100	100 Feet	.070 ID X .125 OD
	BC75X100	100 Feet	.075 ID X .125 OD
	BC80X100	100 Feet	.080 ID X .145 OD
	BC85X100	100 Feet	.085 ID X .145 OD
	BC90X100	100 Feet	.090 ID X .145 OD
BC4-100	BC64X100	100 Feet	.064 ID X .125 OD

UNIVERSAL HUMIDIFIER SOLENOIDS

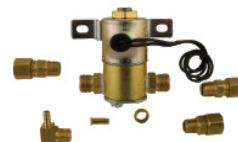
Replaces over 32 OEM Solenoids Replaces: Aprilaire®, General Honeywell®, Skuttle® and others. Easy "wrench-in" Installation.

UHS120

120 Volt Universal Humidifier Solenoid

UHS24

24 Volt Universal Humidifier Solenoid



UHS24

UV DRIER

SUD3759 - U.V. Drier

Direct replacement for: Whirlpool® W10143759 and Electrolux® 5303918358

Features / Benefits

- For leak detection
- 1" drier with U.V. dye
- Replaces hundreds of driers



COMPRESSOR TERMINAL REPAIR KIT

EC10 Easy Connect - Compressor Terminal Repair Kit

The EC10 Easy Connect Replacement Compressor Wires provide a fast, easy and safe option when compressor wires need to be replaced. For use in compressors up to 5 hp. No tools needed for installation.

Product Specifications

- There are three compressor wires in each package. (3 feet long, 10 AWG)
- Connector is made from delrin plastic: a high strength insulation material
- Each package includes three (3) spade connectors and sand paper



MOTORS

SM5109

Universal Condenser Fan Motor

- Direct replacement for the Whirlpool® 833697 condenser



MB55

Motor Mount Bracket

- Kit is used with 5" and 5.5" motors.



SM0740

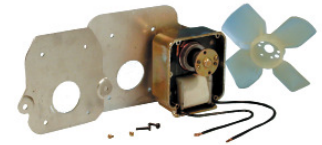
Sub-Zero® Condenser Fan Motor

- Direct replacement for 4200740

Exact Replacement Evaporator Motors

PART NO.	REPLACES
SM327	Whirlpool® 482468, Original Howard
SM329	Whirlpool® 4318001, Original Howard
SM335	Maytag® 56488-2
SM336	Electrolux® 5300158289
SM338	GE® WR60X162

PART NO.	REPLACES
SM343	Whirlpool® 482731
SM344	GE® WR60X190
SM345	Whirlpool® 4389142
SM399	Whirlpool® 4389144
SM8549	Electrolux® 5303918549



SM327

RELAYS

IC Series

IC100

- 120 volt PTC relay replaces current relays and solid state relays from 1/20 to 1/3 HP. Can be used in any position. Used on over 10,000's of models.



IC102

- 120 volt PTC relay replaces current relays and solid state relays from 1/20 to 1/3 HP. Can be used in any position. Used on over 10,000's of models. Can be used with or without a run capacitor.



OLK7913

- 1/4 to 1/3 HP relay and overload kit. Can replace 4387913 kit, 819099, 4387836, 4357207, 2154759 as a direct relay replacement on 2400 Whirlpool® models and as a universal replacement on over 10,000 models as a universal relay overload kit. Instructions included. Can be used with or without run capacitor. 120 volt applications.



ICEMAKER REPLACEMENT KITS

SUPCO Icemaker Replacement Kits are designed to meet or exceed OEM specifications. Choose from Universal Kits or Direct Replacement Kits.

RIM961 - Whirlpool® Icemaker

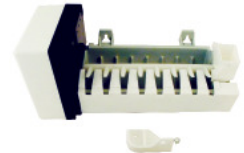
5 cube modular icemaker is designed to replace Whirlpool®, Kenmore®, Maytag®, in over 600 different models. The RIM961 replaces part numbers: W10190961, W10122503, 2212353, & 2212352. Instructions for use in LED models included.



SZ4200520

Sub-Zero® Icemaker

8 cube icemaker is designed to replace the Sub-Zero® 4200420 using the existing wiring harness. Instructions included.



SUB-ZERO® DEFROST TIMERS/RELAY

SZ3081180 Defrost Timer Sub-Zero®

Direct replacement defrost timer to replace the Sub-Zero® 3081180. Wiring instructions included.



SZ7014648 Defrost Timer Sub-Zero®

Direct replacement defrost timer to replace the Sub-Zero® 7014648. Wiring instructions included.

SZ4387766 Sub-Zero® Relay and Overload Kit

Replaces Sub-Zero® and Scotsman® 4387766 relay overload kit.



REFRIGERATOR DOOR GASKETS

PART NO.	SUB-ZERO® NO.	OLD SUB- ZERO® NO.	DIMENSION
SZ0573	7010573		67.5 X 27.5
SZ0574	7010574		67.25 X 17.625
SZ0575	7010575	3211100	47.75 X 33.75
SZ0578	7010578	3211140	58.5 X 33.75
SZ0583	7010583	3212100	59 X 34
SZ0584	7010584	3212110	67.75 X 27.75
SZ0592	7010592		33.75 X 18.25
SZ0609	7010609	3210180	29.625 X 23.25



RANGE PRODUCTS

Surface Receptacles

PART NO.	REPLACES	MIN/MULTI
RR105	GE® WB17X210	-
RR122	GE® SURFACE WB17X5051	-
RR109	ELECTROLUX® 5303912666	10 pcs
RR110	WHIRLPOOL® 330031	20 pcs
RR117	ELECTROLUX® 5303935058	10 pcs
RRUPR	UNIVERSAL RECEPTACLE REPLACES UPR	-
RRUPS	UNIVERSAL RECEPTACLE REPLACES UPS	-
RR123	CERAMIC BLOCK MAYTAG® 12001676	-



OVEN RANGE IGNITER

SGR4001

Direct Replacement Viking® PB040001

• The range igniter is used on all Viking Glow Bar Ignition Systems® both bake and broil



DRYER CLEANING KIT

RLE202

12 Ft Dryer Vent Cleaning Kit



RJR601

3 Ft Dryer Vent Cleaning Kit



R3203612

12 Ft Extension Kit for RLE202, or RJR601



LTK1

Washing Machine Lint Trap



DRYER RESTRING KITS

PART NO.	DESCRIPTION	REPLACES
DE315	Restring Kit	WE11X60
DE333	Restring Kit	WE11X203
DE334	Restring Kit	WE11M21C
DE1746C	Restring Kit	31001946C





**2012
Catalog
Supplement**

Edition 23 Volume 3

SEALED UNIT PARTS CO., INC.
PO Box 21, 2230 Landmark Place, Allenwood, NJ 08720 USA
Phone: 732-223-6644 • Fax: 732-223-1617
www.supco.com • info@supco.com