



SPECIFICATIONS FOR POP-UPS

Description

- Vessel sink pop-up without overflow
- Brushed nickel finish
- Brass construction
- Fits most standard vessel sink drains
- 1-1/4" tailpiece
- Simple push operation for opening and closing

Compliance

- Designed to comply with requirements of ASME A112.18.1
- Designed to comply with requirements of ASME A112.18.2

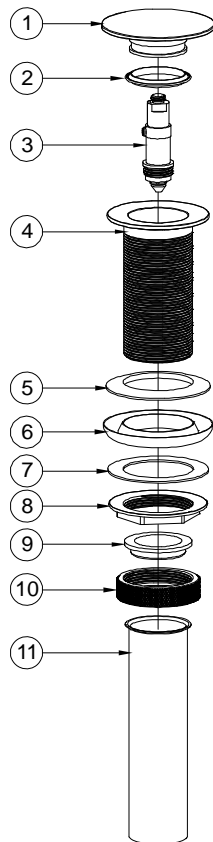
Warranty

- Three-Year Limited Warranty
Refer to Premier warranty program for further details and restrictions.



Model 124113

Vessel Pop-Up
Brushed Nickel Finish



All dimensions are nominal.

No.	Part	Material	Qty.
1	Push-On Cover	Brass	1
2	Washer	Silicone	1
3	Stem	Brass	1
4	Body	Brass	1
5	Washer	Silicone	1
6	Washer	Silicone	1
7	Washer	PE	1
8	Jam Nut	Brass	1
9	Top Hat Washer	NBR	1
10	Lock Nut	Brass	1
11	Tailpiece	Stainless Steel	1

