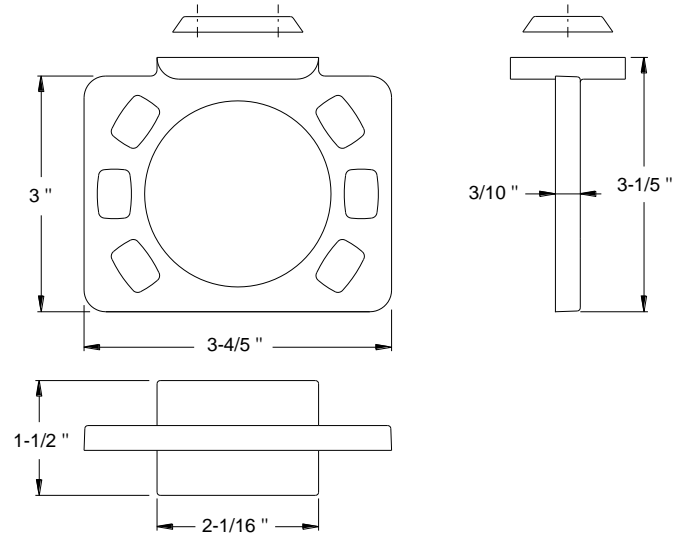
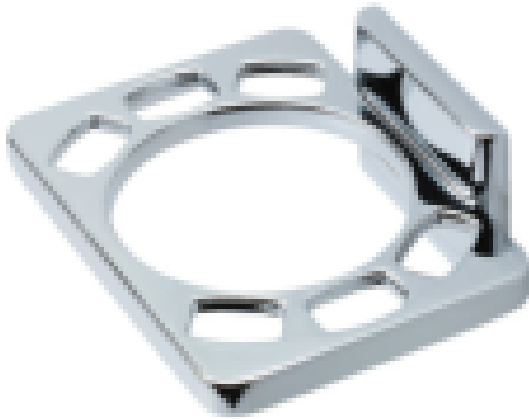


TECHNICAL DATA

SKU 818605

Toothbrush - Tumbler Holder



MATERIALS: Base - Zinc Die Cast
Wall Plate - Steel, Nickel Plated

INSTALLATION: Mount wall plate with supplied fasteners. Slip product over wall plate and tighten set screws until secure.

OPTIONAL FASTENER INFORMATION:
Wood blocking is preferable behind all wall surfaces. If wood blocking is not available, the following fasteners are suggested: Tile/Masonry - Plastic or Lead Anchors, Plaster/Drywall - Toggle Bolts.

SPECIFICATION: Surface mounted chrome toothbrush - tumbler holder shall be model 818605.