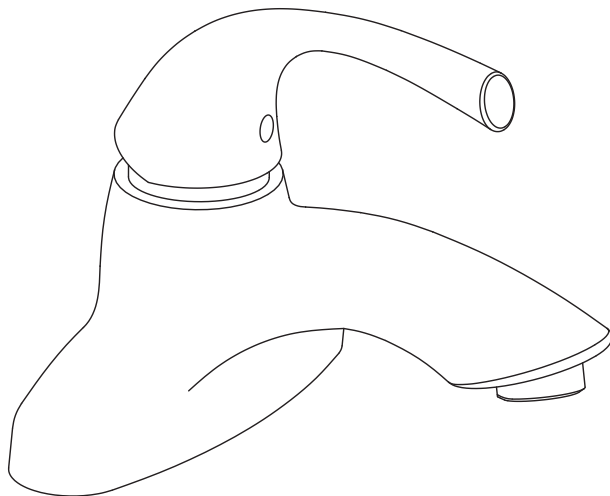


SPEAKMAN®

Rive™ Single Lever Faucet

SB-2111

SPECIFICATION



FEATURES:

- Lead-free brass construction
- Ceramic cartridge
- Transitional Styling
- Includes Pop-up Drain
- 1.5 gpm (5.7 L/min) flow rate

COMPLIANCE:

- Certified to ASME A112.18.1/CSA B125.1 & NSF 61 standards
- WaterSense Certified
- CA AB 1953 Compliant



AVAILABLE FINISHES:

ADD SUFFIX TO MODEL #

- Polished Chrome (standard) -PC
- Brushed Nickel -BN

WARRANTY:

- 1 year limited

SEE REVERSE FOR ROUGH-IN DIMENSIONS

THIS SPACE FOR ARCHITECT/ENGINEER APPROVAL.

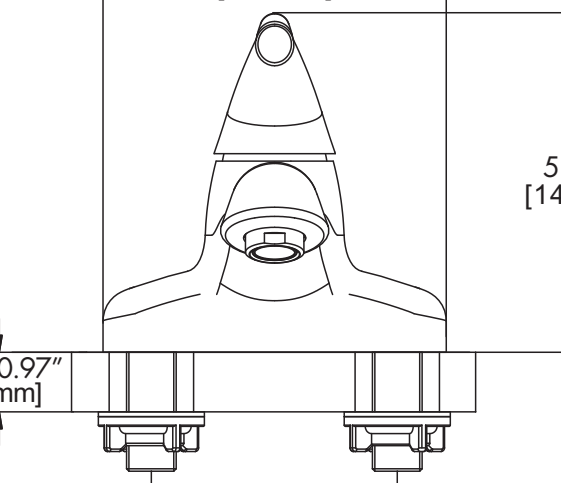
SPEAKMAN®

400 ANCHOR MILL ROAD | NEW CASTLE, DE 19720
P: 800-537-2107 | F: 800-977-2747
WWW.SPEAKMANCOMPANY.COM

REVISION DATE: JANUARY 2014

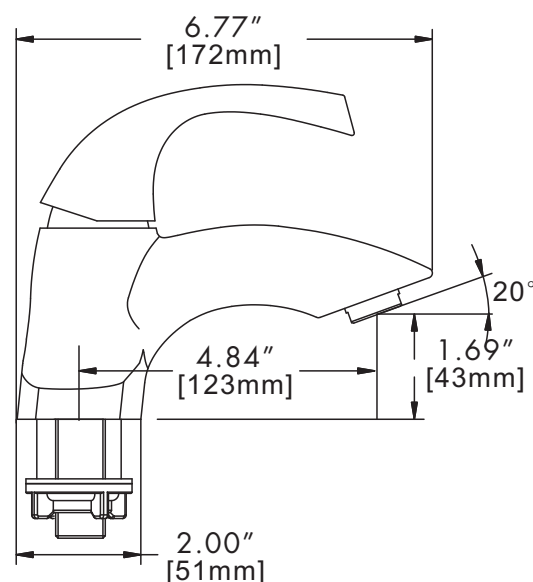
Management Systems
Registered to ISO 9001

Rive™ Single Lever Faucet SB-2111



Technical drawing showing the front view of the 1000 Series 1/2" component. The drawing includes the following dimensions:

- Overall width: 5.59" [142mm]
- Overall height: 5.51" [140mm]
- Maximum height of the base: MAX 0.97" [25mm]
- Distance between mounting feet: 4.02" [102mm]



244