



NRCR111DV (GQ-C3261WXQ-FF US) NRCR92DV (GQ-C2661WXQ-FF US) Residential Condensing Water Heater Specification Sheet

- **Standard Input** – 12,800-199,900 BTU/h / 0.4 - 11.1gpm (NRCR111)
12,800-165,000 BTU/h / 0.4 - 9.2gpm (NRCR92)
- **Uniform Energy Factor (UEF)** - 0.98 (NG) / 0.98 (LP)
- **Compact Design** - ANSI Z21.10.3/CSA 4.3 certified design that can be wall-mounted indoors or installed outdoors using the optional Vent Cap
- **Heat Exchanger** - manufactured with high quality stainless steel
- **Built-In Recirculation** – Equipped with a built-in pump for whole home recirculation. Automatically adjusts to hot water demand without any set up. Custom time available with Built-in digital display, Bluetooth® app or optional remote. Compatible with On-Demand Recirculation.
- **Crossover Compatible** – Available crossover valve kit enables recirculation without dedicated return line, supporting up to two valves.
- **Venting Options** - available in Direct Vent model that can use either 2", 3" or 4" Schedule 40/80 PVC/CPVC, 2" or 3" PP / Single vent convertible, flexible PP vent, or installed outdoors with Vent Cap..
- **Bluetooth® Connectivity**
- **Wifi Capable**
- **Built-In Display**
- **Field Convertible** – Default NG gas type. Field LP convertible (parts included).
- **Direct Electronic Ignition**
- **Compatible with 1/2" gas pipe** - see installation manual
- **Multi-System Capability** - units can be linked together by using the optional 2-unit Quick Connect for twice the hot water capacity
- **Fully Modulating** - BTU input range from 12,800 to 330,000/399,800 BTU/h (with Quick Connect) with stable combustion provided by gas venturi and pre-mix burner. Each individual unit 13/16:1 Turndown Ratio
- **Temperature Controls** - can be precisely adjusted from 100°F to 140°F using Built-in digital display or the Bluetooth® app.
- **Safety Devices** - Flame Sensor, Overheat Prevention Device, Lightning Protection Device, Freeze Protection, Fan Rotation Detector, Thermal Fuse, Condensate Overfill
- **15 Year* Limited Heat Exchanger Warranty for Residential Use**
- **5 Year Limited Parts Warranty & 1 Year Reasonable Labor**
- **Approvals** - CSA, UPC, LOW-LEAD**, NSF, Low NOx Approved By SCAQMD (Rule 1146.2)



Accessories

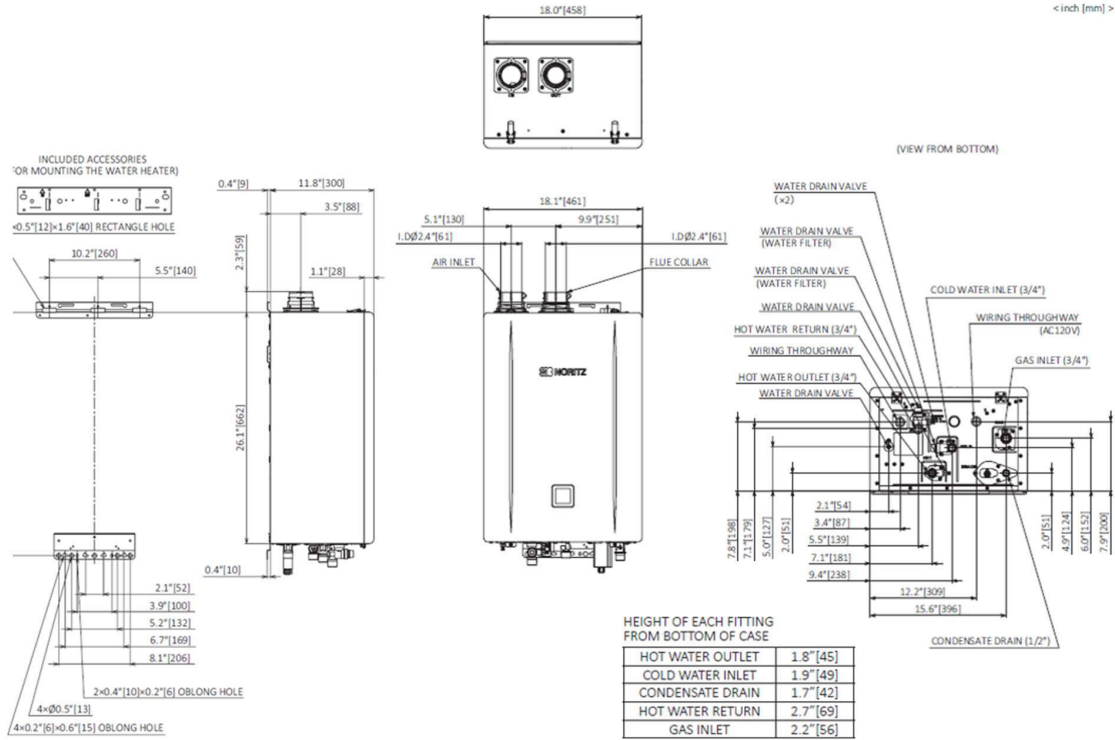
- ☐ Universal Concentric Vent Kit (#PVC-UCVK)
- ☐ Low Profile Termination Kit (#PVC-LPT)
- ☐ PVC Concentric Termination (#PVC-CT)
- ☐ 3" Horizontal Hood Termination (#PVT-HL)
- ☐ SV Conversion (#SV-CK-2-1)
- ☐ Bird screen (#VT-PVCS)
- ☐ Outdoor Vent Cap (#VC-6-)
- ☐ Plastic Rain Cap (#PRC-1)
- ☐ PP Flex Vent Kit (#EZ2FVK-)
- ☐ EZTR Conversion Kit (#EZ2-CK-1)
- ☐ No Roof Kit (#NRK-1)
- ☐ Scale Shield Water Treatment(#SS-HB-3)
- ☐ Isolator Valves (#IK-WV-200-)
- ☐ Wireless Monitor (#NAW-1 US)
- ☐ Quick Connect Cord (#QC-2)
- ☐ Neutralizer for 1-unit (#NC-1W)
- ☐ Descale Kit (#DSCL-KIT)
- ☐ Remote Controller (#RC-7651M-A)
- ☐ Remote Controller (#RC-9018M)
- ☐ Remote Controller Cord (#RC-CORD-)
- ☐ Cross Over Valve Kit (#cCS-V)
- ☐ Crossover Kit (#CSV-BPK)
- ☐ On Demand Switch - Rocker Type (#IHK-RS)
- ☐ On Demand Button (#IHK-GB)
- ☐ Wireless On-Demand Button Kit for NRCR (#WLB)
- ☐ Extra Transmitter for WLB for NRCR (#WLB-ET)
- ☐ Wireless Motion Sensor for NRCR (#WLB-MS)



* Refer to the Noritz Limited Warranty for complete coverage details, at Noritz.com

** This product complies with California AB 1953 Low Lead Law and section 1417(d) of the Safe Drinking Water Act
NORITZ AMERICA CORPORATION 11160 Grace Avenue, Fountain Valley, CA 92708

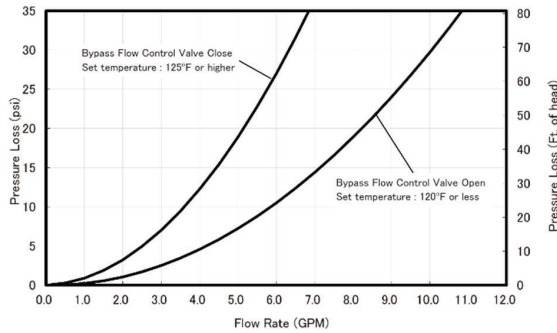
Dimensions



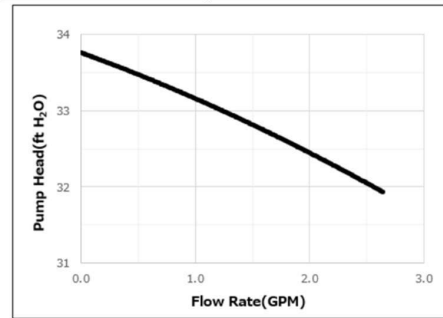
Flow Rates

Temperature Rise (°F)	30	40	45	50	60	70	80	90	100	110	120	130	140
NRCR111DV (GPM)	11.1	9.8	8.7	7.8	6.5	5.6	4.9	4.4	3.9	3.6	3.3	3.0	2.8
NRCR92DV (GPM)	9.2	8.0	7.1	6.4	5.3	4.6	4.0	3.6	3.2	2.9	2.7	2.5	2.3

Pressure Drop



Pump Performance



Specifications

Model Name		NRCR92DV / NRCR111DV (GQ-C2661 / 3261WXQ-FF US)	
Weight		62 pounds	
Operating Pressure		15 - 150 psi	
Gas Supply Pressure		NG: 3.5" - 10.5" LP: 8.0" - 13.0"	
Water Holding Capacity		0.74 Gallon (2.8L)	
Connection Sizes	Water Inlet	3/4" NPT	
	Hot Water Outlet	3/4" NPT	
	Recirculation Return	3/4" NPT	
	Gas Inlet	3/4" NPT	
	Condensate Drain	1/2" NPT	
Power	Supply	120VAC (60Hz), less than 4 amperes	
	Consumption	NG: 118W (NRCR92) 157W (NRCR111) LP: 121W (NRCR92) 160W (NRCR111) Freeze Protection: 114W	
Freeze Protection		Outdoor: -4°F Indoor: -30°F	
Temperature Settings	°F Mode	100-140°F (In 5°F intervals) (9 Options)	
	°C Mode	37-48°C (In 1°C intervals), 50-60°C (In 5°C intervals) (15 Options)	
Materials	Front Cover	Hot-dipped zinc-aluminum-magnesium-alloy-coated steel w/ Polyester Coating	
	Casing	Side/Top Plate: Hot-dipped zinc-aluminum-magnesium-alloy-coated steel w/ Polyester Coating Back, Bottom Plate: Hot-dipped zinc-aluminum-magnesium-alloy-coated steel w/o Coating	

Noritz America reserves the right to discontinue, or change at any time, the designs and/or specifications of its products without notice.

Rev02/2025