

QuickFitting® SurePress® is line of press fittings that visually confirms a pressed connection. Green indication fills windows once pressed, confirming a successful seal. This allows installers and inspectors to quickly identify if a fitting has been pressed prior to pressure testing.

Features and Benefits

- SurePress® Technology: PRESS-GREEN-GO
- Green indication in windows confirms a pressed connection
- Visible indication up to 5 ft. away
- Quickly identify if fittings are pressed prior to pressure testing
- Lead free materials - safe for potable water
- No heat, flame or Hot Work Permit needed to install
- Compatible with all leading brand hydraulic press tools and jaws
- Limited Lifetime Warranty

Materials

- Body Construction: Copper
- Sealing Element (O-ring): EPDM

Performance

- Operating Pressure (Max): 300 psi
- Test/Burst Pressure (Max): 600 psi
- Operating Temperature: 0°F - 250°F

Pipe Compatibility

- ASTM B88 compliant Type K, L, M copper tubing
 - Hard copper: Nominal sizes 1/2" to 2"
 - Soft copper: Nominal sizes 1/2" to 1-1/4"

Approved Applications (Services)

Approved for above and below ground applications but requires approval from local inspector prior to installation due to codes and soil conditions.

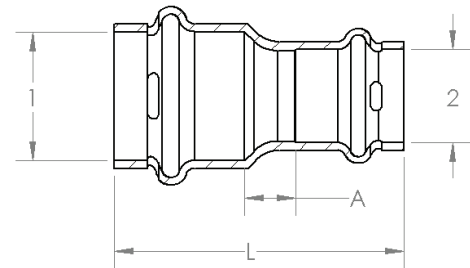
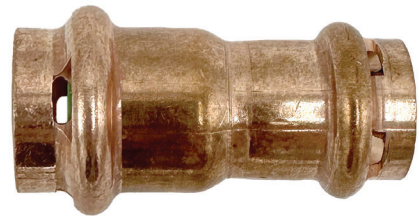
- Fluids/Water
 - Hot and cold potable water
 - Rainwater/Gray water
 - Chilled water
 - Residential steam (5 psi maximum)

Listings & Certificates

- IAPMO/ANSI Z1117
- NSF/ANSI 61
- NSF/ANSI 372
- IAPMO Listed

Compliant with:

- ASTM B88
- ASTM D2000



Dimensional Data

Part No.	Size (P x P)		A	L
	1	2		
SPWRC21R	3/4	1/2	0.35	2.01
SPWRC31R	1	1/2	0.46	2.17
SPWRC32R	1	3/4	0.25	2.01
SPWRC42R	1-1/4	3/4	0.49	2.42
SPWRC43R	1-1/4	1	0.35	2.28
SPWRC52R	1-1/2	3/4	0.59	2.80
SPWRC53R	1-1/2	1	0.47	2.68
SPWRC54R	1-1/2	1-1/4	0.39	2.72
SPWRC62R	2	3/4	0.91	3.39
SPWRC63R	2	1	0.79	3.27
SPWRC64R	2	1-1/4	0.67	3.27
SPWRC65R	2	1-1/2	0.51	3.39

Fitting Size	Pipe Insertion Depth
1/2"	3/4"
3/4"	1"
1"	1"
1-1/4"	1-1/16"
1-1/2"	1-3/8"
2"	1-1/2"

Item # Submitted	
Job Name	
Date	
Engineer	
Contractor	
PO #	
Tag	