

QuickFitting® SurePress® is line of press fittings that visually confirms a pressed connection. Green indication fills windows once pressed, confirming a successful seal. This allows installers and inspectors to quickly identify if a fitting has been pressed prior to pressure testing.

### Features and Benefits

- SurePress® Technology: PRESS-GREEN-GO
- Green indication in windows confirms a pressed connection
- Visible indication up to 5 ft. away
- Quickly identify if fittings are pressed prior to pressure testing
- Lead free materials - safe for potable water
- No heat, flame or Hot Work Permit needed to install
- Compatible with all leading brand hydraulic press tools and jaws
- Limited Lifetime Warranty

### Materials

- Body Construction: Copper
- Sealing Element (O-ring): EPDM

### Performance

- Operating Pressure (Max): 300 psi
- Test/Burst Pressure (Max): 600 psi
- Operating Temperature: 0°F - 250°F

### Pipe Compatibility

- ASTM B88 compliant Type K, L, M copper tubing
  - Hard copper: Nominal sizes 1/2" to 2"
  - Soft copper: Nominal sizes 1/2" to 1-1/4"

### Approved Applications (Services)

Approved for above and below ground applications but requires approval from local inspector prior to installation due to codes and soil conditions.

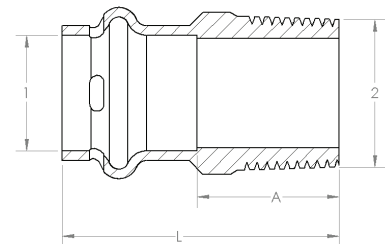
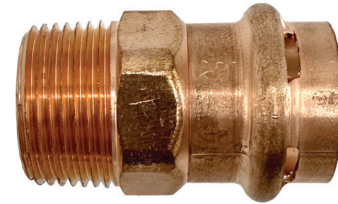
- Fluids/Water
  - Hot and cold potable water
  - Rainwater/Gray water
  - Chilled water
  - Residential steam (5 psi maximum)

### Listings & Certificates

- IAPMO/ANSI Z1117
- NSF/ANSI 61
- NSF/ANSI 372
- IAPMO Listed

### Compliant with:

- ASTM B88
- ASTM D2000
- ASME B1.20.1



### Dimensional Data

Part No.	Size (P x MNPT)		A	L
	1	2		
SPWM11R	1/2	1/2	0.79	1.54
SPWM12R	1/2	3/4	1.04	1.79
SPWM21R	3/4	1/2	0.94	1.85
SPWM22R	3/4	3/4	0.87	1.77
SPWM33R	1	1	1.18	2.09
SPWM44R	1-1/4	1-1/4	1.26	2.28
SPWM55R	1-1/2	1-1/2	1.38	2.68
SPWM66R	2	2	1.46	2.99

Fitting Size	Pipe Insertion Depth
1/2"	3/4"
3/4"	1"
1"	1"
1-1/4"	1-1/16"
1-1/2"	1-3/8"
2"	1-1/2"

Item # Submitted	
Job Name	
Date	
Engineer	
Contractor	
PO #	
Tag	