

# Fixed Flat Panel TV Mount for 24-55" Televisions

User's Guide for Model TM15-v2856-01

# ANCHOR

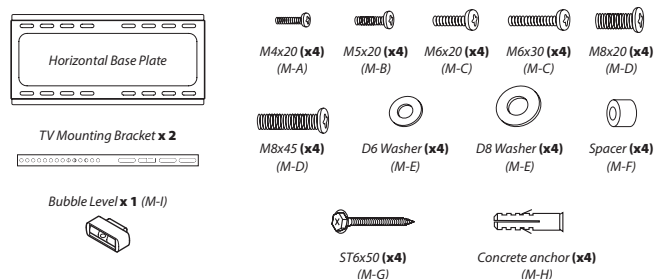
## Warnings

- The wall mounted parts of the TV mount must be firmly attached to a concrete/brick/solid wood wall, or wall studs behind drywall.
- Tighten screws so that the wall plate is firmly attached, but do not overtighten. Overtightening can damage the screws and increase the chances of failure.
- Do not remove or loosen any screws until they are no longer engaged with the mount. Doing so may cause the screen to fall.
- It is highly recommended to have this mount professionally installed.
- Supports VESA mounts up to 400 x 400mm (100 x 100mm for 24" TVs).
- This mount is designed to hold a maximum of 88 lbs (40 kg).



**WARNING:** This product can expose you to chemicals including lead, which is known to the State of California to cause cancer and birth defects or other reproductive harm. For more information go to [www.P65Warnings.ca.gov](http://www.P65Warnings.ca.gov). This product meets and complies with required Federal product guidelines.

## Parts List



## Tools

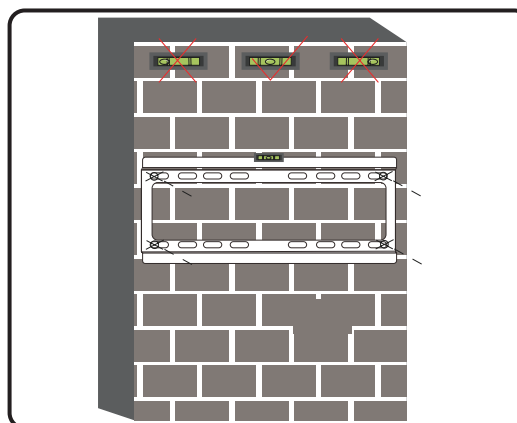
The following tools are recommended for this installation:

- Drill
- 3/16" drill bit for drywall
- 3/8" or 10mm drill bit for concrete
- Stud finder
- Phillips screwdriver

## Step 1

### Pre-drill Holes for Base Plate to Wall Attachment

Drill 4 holes for the Horizontal Base Plate to attach to the wall, using exact measurements based on where you want to mount the Horizontal Base Plate. Only drill into a solid wall, or studs (behind drywall). **DO NOT DRILL AND HANG THE BASE PLATE ON DRYWALL OR SHEETROCK.** It is not strong enough to support a TV and will cause damage.

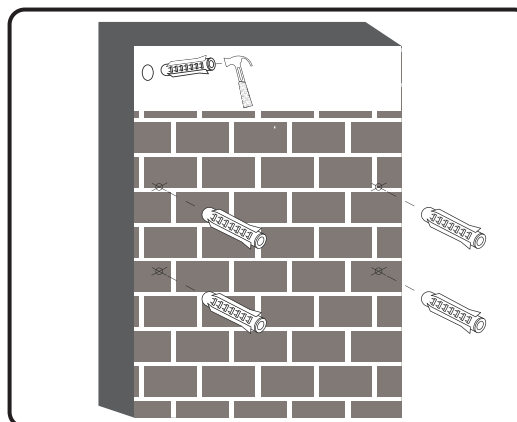


If drilling into drywall, use a stud finder to locate studs. **ONLY DRILL INTO STUDS!!**

Use a 3/16" drill bit

## Step 3

Insert concrete anchors into the 4 drilled holes (use a hammer to tap into place).



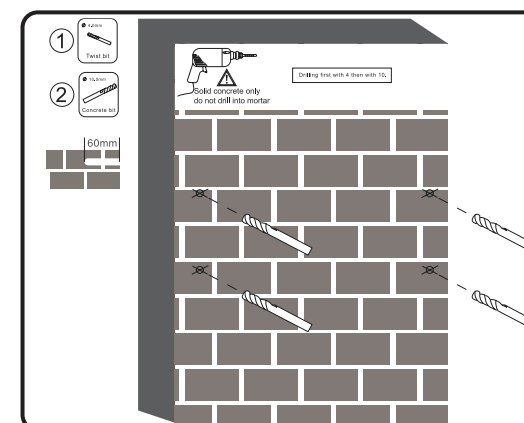
Concrete/Brick wall shown above.

Use a 3/8" or 10mm drill bit

## Step 2

### Attach Base Plate to Wall

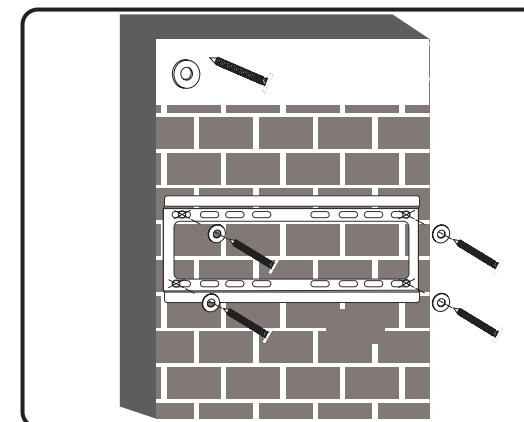
Drill holes: Using a 5mm or 3/16" drill bit.



Attach the Horizontal Base Plate to the wall using the holes drilled in Step 2. Use the included level to ensure the Horizontal Base Plate is correctly aligned and square.

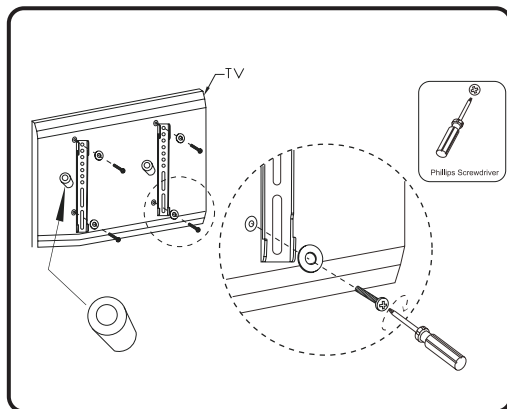
## Step 4

Secure the mount to the wall by screwing in the ST6 screws into the wall anchors using a screwdriver.



Insert wall anchors into the holes drilled in Step 1, then screw the base plate firmly to the wall with the supplied screws.

## Step 5

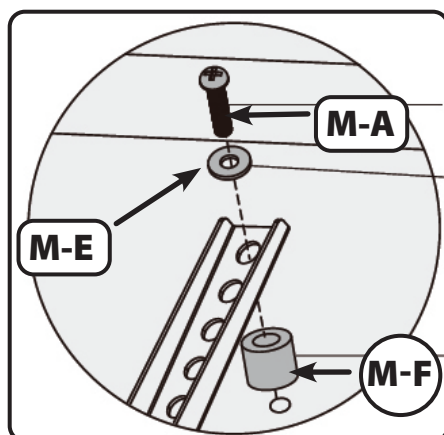


If mounting a Samsung TV with deeper holes, please use **M-D** screws, and Samsung spacers (these spacer are included with Samsung TV).

Attach the two brackets to the rear of your television, making sure the claw of the bracket is in the upper position.

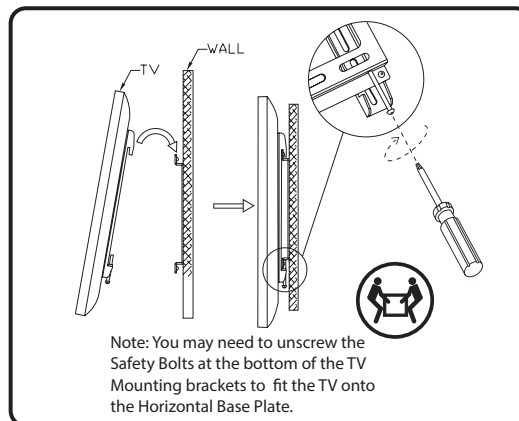
Use the included screws and washers (Parts M-A through M-E) to secure the bracket to your TV. Find the set that fits your TV and discard the rest.

The rubber washers (Part M-F) can be used as a spacer **between the TV body and the mounting brackets**, if the mounting holes on the TV are too shallow for the included screws.



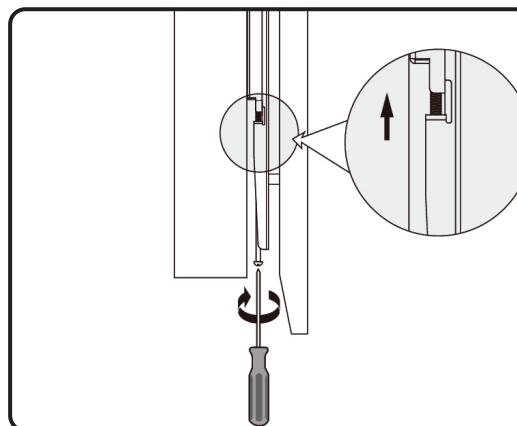
## Step 6

Hang TV on the mount and use a screwdriver to secure the safety screws at the bottom of the mount as seen below.



Attach the TV/brackets to the Horizontal Base Plate on the wall, making sure to catch the top claw of the bracket on the rim of the upper base plate. Use the two long safety screws at the bottom of the TV mounting Brackets to tighten the brackets to the base.

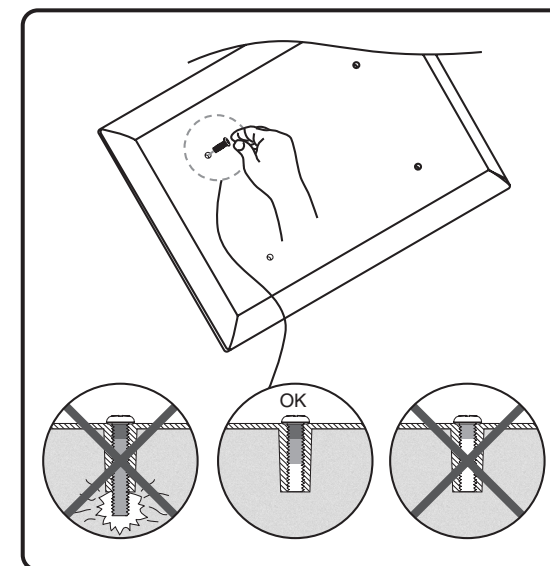
It is highly recommended to use at least two people to hang the TV.



Tighten the two safety screws on the bottom of the bracket until they are **FIRM** against base plate. These screws secure the TV to the base plate and ensure it will not move or shift after installation.

## Safety Warning

Your TV has threaded screw holes that assist in mounting your TV. When attempting to figure out which screw is the right size for your TV threaded screw holes, hand tighten each screw size (M-A through M-D) to see which screw will fit your TV's Specification. You may need to use the included spacers if you have a curved TV or your TV's threaded screw holes are deep.



## Customer Support

**Customer Service:** 1-888-999-4215 | **Email Support:** [prodinfo@dpiinc.com](mailto:prodinfo@dpiinc.com) | **Email Parts:** [partsinfo@dpiinc.com](mailto:partsinfo@dpiinc.com)

For Warranty Information and the most up-to-date version of this User's Guide, go to [www.gpx.com](http://www.gpx.com)

To download this User's Guide in English, Spanish, or French, or to get answers to frequently asked questions, visit the support section at: [www.gpx.com](http://www.gpx.com)

Para descargar este Manual del Usuario en inglés, español y francés, o para obtener respuestas a preguntas frecuentes, visite la sección de apoyo en: [www.gpx.com](http://www.gpx.com)

Pour télécharger ce guide de l'utilisateur en anglais, espagnol ou français, ou pour obtenir des réponses à des questions fréquemment posées, consultez la rubrique d'assistance sur: [www.gpx.com](http://www.gpx.com)

Copyright © 2021 Digital Products International (DPI, Inc.) All other trademarks appearing herein are the property of their respective owners. Specifications are subject to change without notice.