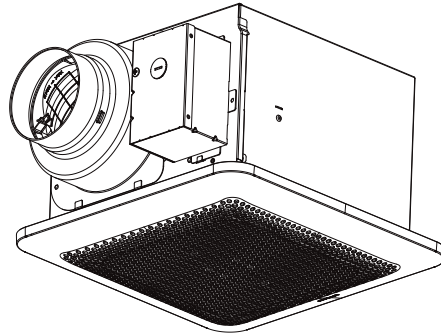


Service Manual

Ventilating Fan
(North America Market)



RG-C811HA

⚠ WARNING

This service information is designed for experienced repair technicians only and is not designed for use by the general public. It does not contain warnings or cautions to advise non-technical individuals of potential dangers in attempting to service a product. Products powered by electricity should be serviced or repaired only by experienced professional technicians. Any attempt to service or repair the product or products dealt with in this service information by anyone else could result in serious injury or death.

IMPORTANT SAFETY NOTICE

There are special components used in this equipment which are important for safety. These parts are marked by ⚠ in the Schematic Diagrams, Exploded Views and Replacement Parts List. It is essential that these critical parts should be replaced with manufacturer's specified parts to prevent shock, fire or other hazards. Do not modify the original design without the manufacturer's approval. Please have a static electricity depletion process in place before handling these components.. Please use gloves when handling PCB parts during the repair process..

CONTENTS	PAGE
1.Specification-----	1
2.Parts Identification-----	2 ~ 4
3.Wiring Diagram-----	5
4.Parts List-----	6 ~ 7

1. Specification

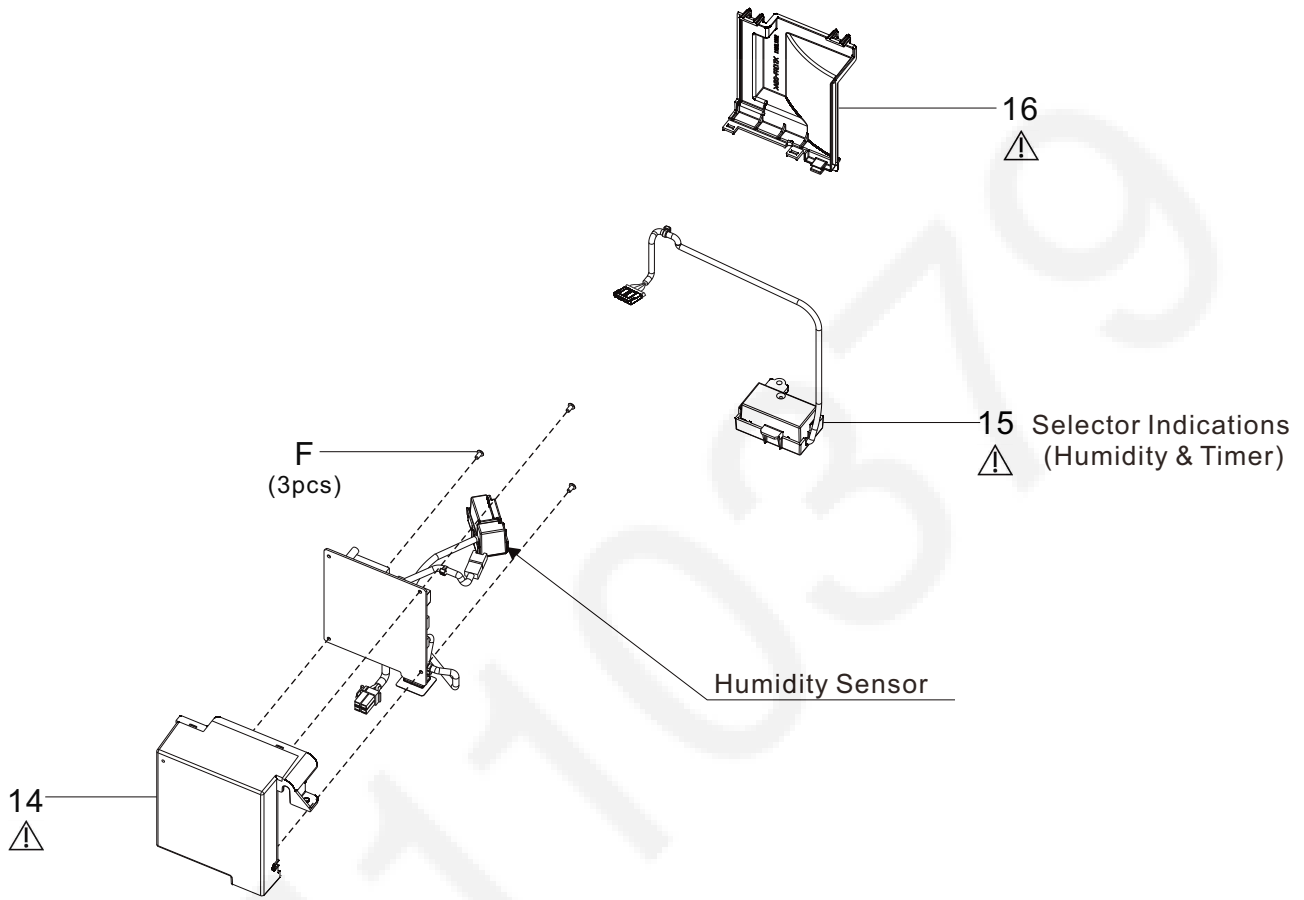
Model No.	Air direction	Voltage (V)	Frequency (Hz)	Duct diameter (Inches)	Air volume at 0.1"WG (CFM)	Noise (sones)	Speed (rpm)	Power (W)	Weight lb. (kg)
RG-C811HA	Exhaust	120	60	4 or 6	80	< 0.3	824	6.5	9.5 (4.3)
					110	< 0.5	984	11.1	

HVI Certified performance based on HVI Procedures 915, 916, and 920.

2. Parts Identification

RG-C811HA

Main PCB Section



Main Label

17

18

21

WARNING:
1. Before servicing or cleaning unit, switch power off at service panel and lock service panel to prevent power from being switched on accidentally.
2. Acceptable for use over a bathtub or shower when installed in a GFCI protected branch circuit.

CAUTION:
To reduce the risk of injury to persons, install fan at least 2.1m (7 feet) above the floor.

19

CFM		Sones	
0.1" SP	110	0.5	80

22

Secure screw tightly for ground continuity

23

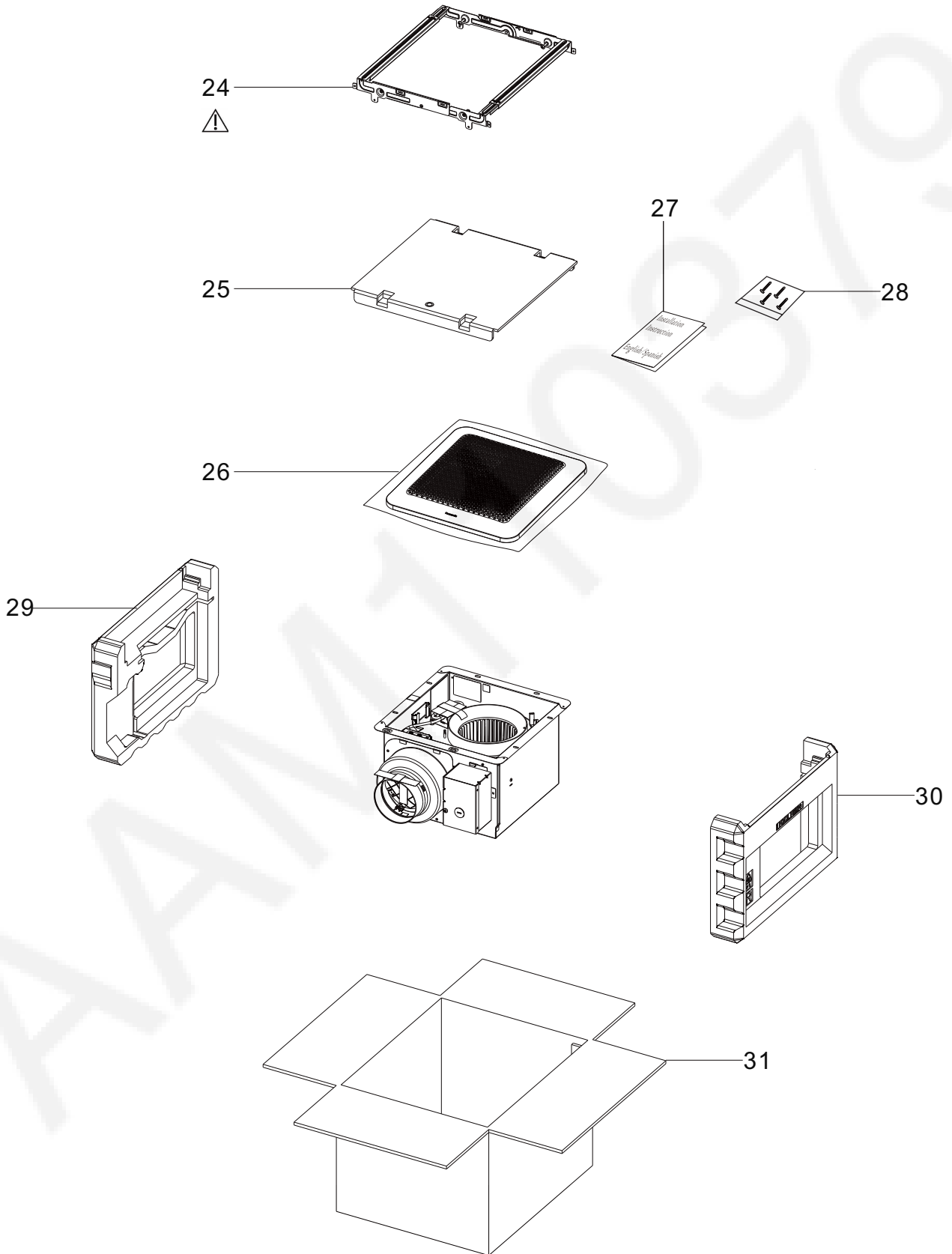
20

Not for use in cooking area-See installation instructions. Non destiné à la zone de cuisson-Voir instructions d'installation. No usar en áreas donde se cocine - Consulte las instrucciones de instalación.

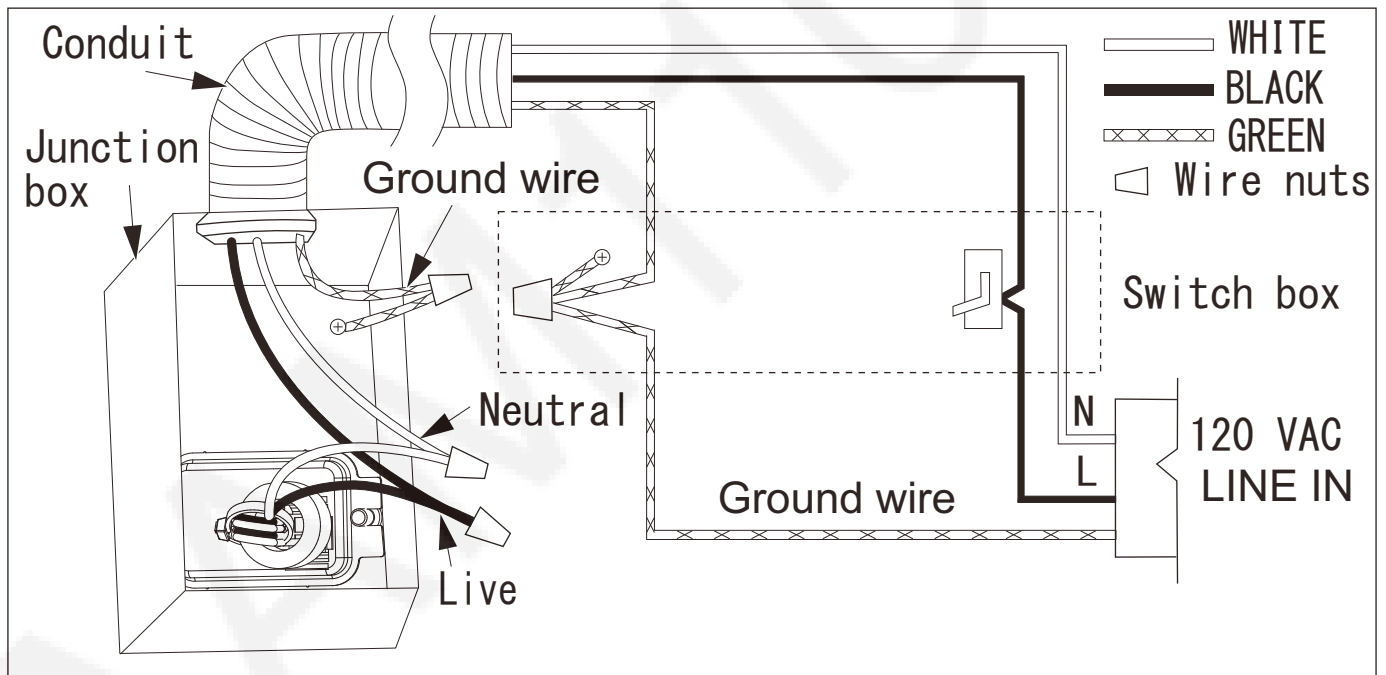
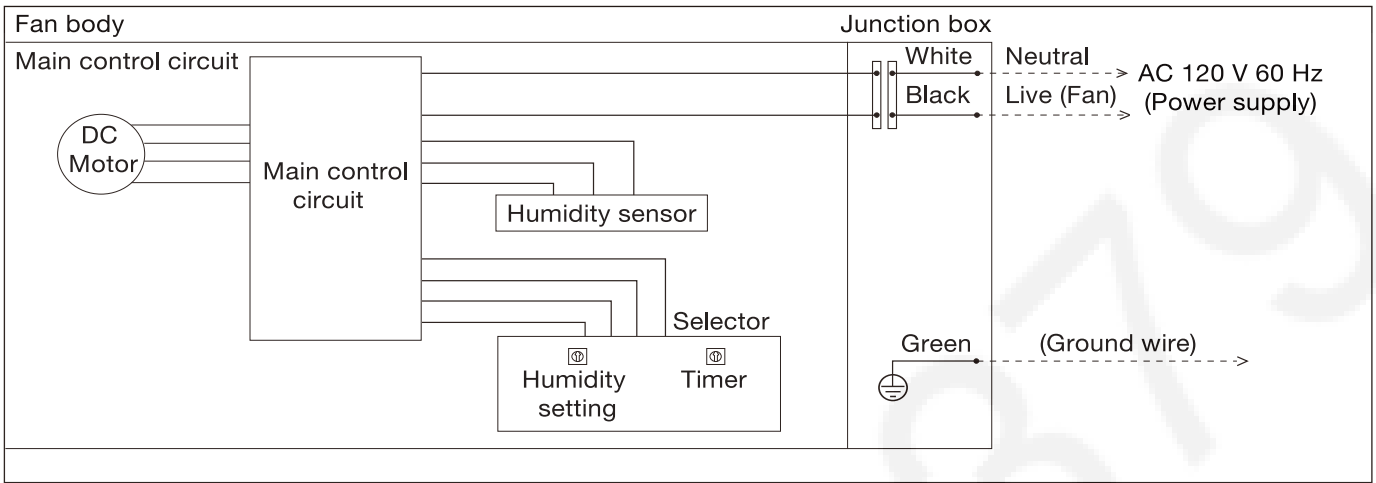
2. Parts Identification

RG-C811HA

Packing Section



3. Wiring Diagram



4. Parts List

RG-C811HA

Main Body Section

No.	Part No.	Part Name	Q'ty	Remark
1	FFVC811LH900	Frame Assembly	1	
2	FFV11VQC1910	Adapter Assembly	1	⚠
3	FFV08VKS3M915	Connector Plate	1	
4	FFV11QCL1331	Earth Lead Wire	1	⚠
5	FFV11QCL1301A	Connector Assy	1	⚠
6	FFV11QCL1912A	Junction Cover	1	
7	FFV11QCL1M21AX	Motor	1	⚠
8	FFV11QCL1904C	Motor Support	1	
9	FFV0400114S	Blade	1	
10	FFV7020021S	Nut	1	
11	FFV11QCL1906B	Casing	1	
12	FFV811HAPCB	Main PCB section	1	⚠
13	FFV1315A810	Grill Assembly	1	
A	FFVXYM4-E8FJ	Screw (M4-8)	1	⚠
B	FFVXTT4-8FFJ	Screw (ST4-8)	5	
C	FFV7000089S	Screw (ST4-12)	8	
D	FFVXYM4DC8BN	Screw (M4-8)w/washer	1	⚠
E	FFV7000065S	Screw (M4-12)	2	

Main PCB Section

No.	Part No.	Part Name	Q'ty	Remark
14	FFVC811LH991	Main PCB Box	1	⚠
15	FFV11QCL1560	Selector Indications (Humidity & Timer)	1	⚠
16	FFV11QCL1992C	Main PCB Cover	1	⚠
F	FFVXTN3-8GFJ	Screw (M3-8)	3	


4. Parts List

RG-C811HA

Main Label

No.	Part No.	Part Name	Q'ty	Remark
17	FFV11QCL1011A	Switch Label	1	
18	FFV811LH112	Speed Switch Label	1	
19	FFV811H1050A	Name Plate	1	
20	FFV0810011S	Caution Label 1	1	
21	FFV811LH183	Caution Label	1	
22	FFV811LH152	Instruction Label	1	
23	FFV2260003S	Holograph Label	1	

Packing Section

No.	Part No.	Part Name	Q'ty	Remark
24	FFV11QCL1920	Hanger Assy	1	
25	FFV4710381S	Grill Pad Assy	1	
26	FFV4650016S	Poly Cover	1	
27	FFV811A1420	Installation Inst	1	English / Spanish For USA Market
28	FFV11KSL1M031A	Accessory A	1	
29	FFV11QCL1891	Left Pad	1	
30	FFV11QCL1892	Right Pad	1	
31	FFV811H1400	Packing Case Assy	1	