

LOCATION		DATE
PREPARED BY		QUANTITY
COMMENTS		FIXTURE TYPE
CATALOG NUMBER		

**Industrial Grade Vaportite
326728**

Features

Designed for applications requiring an industrial grade fixture that can be used where dirt, dust, humidity, moisture and cold temperatures are present. The light gray polycarbonate housing is fully gasketed and snap fit polycarbonate latches provide a tight fit between the lens and housing. Typical applications are canopies, dock areas, food processing, refrigerated areas, and other non-hazardous environments.

Construction

Gear tray is die-formed of 22-gauge steel. Heavy-duty gray polycarbonate housing has a continuous pored gasket providing a tight seal. Standard mounting holes are included. Two stainless steel mounting brackets are provided, which allow for flush or chain mounting. Power supply connections can be made inside the fixture wire way.

Finish

Outer body is molded light gray plastic; ballast gear tray is finished in lighting grade white baked gloss enamel paint.

Diffuser

Polycarbonate diffuser is clear .080" thick with interior linear prisms and a smooth exterior. Diffuser is secured in position with snap latches.

Electrical

This unit is wired for 120-277V HPF operation.

Lamping

50,000 hour long life non-replaceable LED's produce 3500 source lumens. 4000K color temperature.

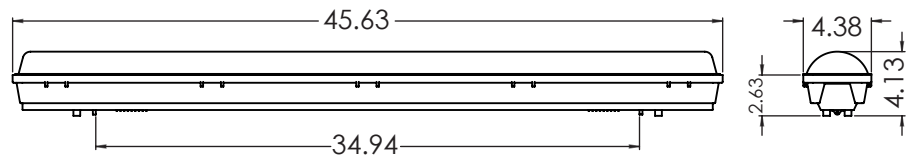
Certification

All fixtures are cETLus listed for damp locations.

Warranty

Limited warranty: This fixture is free from defects in materials and workmanship for a period of 5 years from date of purchase.

Specifications and dimensions subject to change without notice.



Ordering Information:

Model No.	Finish	LED	Source Lumens	L	W	H
326728	White	34W	3500	46"	4-3/4"	4-1/4"