



engineered for life™

## Professional Classic Plus® Ultra Low NOx water heaters exceed ANSI standards for flammable vapor ignition resistance

### Efficiency

- .58 - .64 UEF
- More hot water at a low operating cost

### Performance

- FHR: 51 - 99 gallons for natural gas
- Recovery: Up to 45 GPH at a 90° F rise, depending on model

### Guardian System™ & Sensor

- Exclusive fuel shut-off device
- Maintenance free – no filter to clean
- Protective control system that disables the heater in the presence of flammable vapor accumulation



Maintenance Free

### Low Emissions

- Ultra Low NOx radiant burner design
- Stainless steel burner construction
- SCAQMD Rule 1121 compliant
- Meets 10 ng/J NOx requirements

### High Altitude Compliant

- All models certified to 10,000 ft. above sea level

### Plus...

- EverKleen® patented system fights sediment build-up
- Premium grade anode rod provides long-lasting tank protection

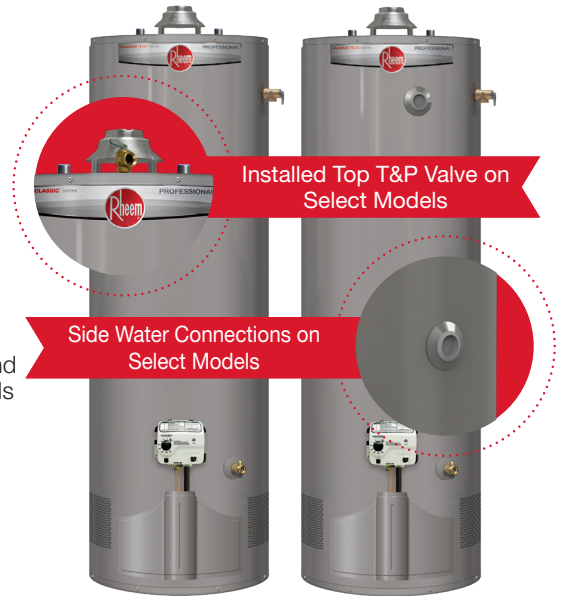
- Easy to light – no matches required
- Enhanced-flow brass drain valve
- Temperature and pressure relief valve included
- Factory installed top temperature and pressure relief valve on select models
- Side water connections for space heating applications **available on select models**
- Low lead compliant
- Exclusive Rheemglas® lining

### Warranty

- 8-Year limited tank and parts warranty\*
- With ProtectionPlus® the 8-year limited tank warranty becomes 12-year

\*See Residential Warranty Certificate for complete information

Units meet or exceed ANSI requirements and have been tested according to the AHRI Operations Manual and D.O.E. procedures. Units meet or exceed the energy efficiency requirements of NAECA, ASHRAE standard 90, ICC Code and all state energy efficiency performance criteria.

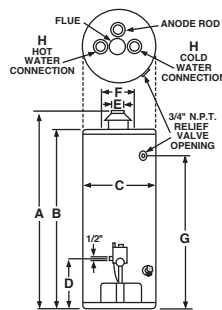


## Professional Classic Plus Ultra Low NOx

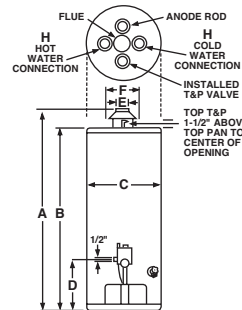
29, 40, 50 and 55-Gallon Capacities  
Up to 45,000 BTU/h  
Natural Gas



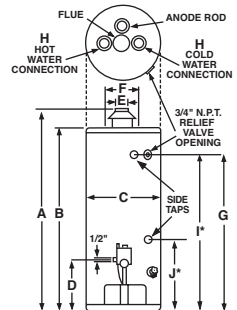
LEED Point = 1



Side T&P Models



Top T&P Models



Side Water Connection Models

DESCRIPTION				FEATURES		ROUGHING IN DIMENSIONS (SHOWN IN INCHES)										ENERGY INFO.
TYP	NOMINAL GALLON CAPACITY	RATED GALLON CAPACITY	MODEL NUMBER	GAS INPUT IN THOUS. BTU/H NAT.	RECOVERY IN G.P.H. 90° F RISE NAT.	FIRST HOUR RATING (GALLONS)	HEIGHT TO VENT A	TANK HEIGHT B	DIAM. C	HT. TO GAS CONN. D	VENT SIZE E	WATER CONN. CENTER F	HT. TO SIDE T&P VALVE G	WATER CONN. SIZE H	SHIP WT. (LBS)	UNIFORM ENERGY FACTOR (UEF)
Tall	29	28	PRO+G29-30U RH63 EC1-1	30	30	51	59-3/4	56-7/8	16-1/2	14	3 or 4	8	50-7/8	3/4	112	0.60
Tall	40	38	PRO+G40-38U RH62 EC1-1	38	38	71	61-1/2	58-1/2	19	14	3 or 4	8	52-1/4	3/4	135	0.58
Tall	50	48	PRO+G50-38U RH62 EC1-2	38	38	86	61-1/4	58-3/8	20-1/2	14	3 or 4	8	51-3/8	3/4	150	0.63
Tall	55	55	PRO+G55-45U RH59 EC1-1	45	45	99	59-1/4	59-1/4	23-3/4	14	4	8	48-3/4	3/4	188	0.62
<b>Models with Installed Top T&amp;P Valve</b>																
Tall	40	38	PRO+G40-38U RH62 EC1 TT-1	38	38	71	61-1/2	58-1/2	19	14	3 or 4	8	—	3/4	135	0.58
Tall	50	48	PRO+G50-38U RH62 EC1 TT-1	38	38	84	61-1/4	58-3/8	23	14	3 or 4	8	—	3/4	162	0.64
<b>High BTU Models with Installed Side Water Connections</b>																
Tall	50	48	PRO+G48-48U RH EC1	48	46	88	61-3/4	58-1/2	21-3/4	4	4	11	51-7/8	3/4	150	0.63

Uniform Energy Factor and rated gallon capacity based on Department of Energy (DOE) requirements.

In keeping with its policy of continuous progress and product improvement, Rheem reserves the right to make changes without notice.

Rheem Water Heating • 1115 Northmeadow Parkway, Suite 100  
Roswell, Georgia 30076 • www.Rheem.com

Rheem Canada Ltd./Ltée • 125 Edgeware Road, Unit 1  
Brampton, Ontario L6Y 0P5 • www.Rheem.ca