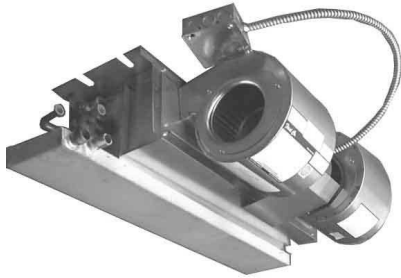
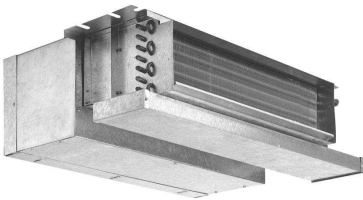




PRODUCT SPECIFICATIONS
*HBC(X) *PHBC(X) *RHBC(X) *CHBC(X)
Chilled Water/Hot Water 2-pipe/4-Pipe



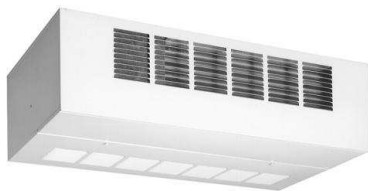
Ceiling Concealed



Ceiling Concealed with Plenum



Ceiling Recessed



Ceiling Exposed

HBC SERIES-PSC MOTOR HBCX SERIES-ECM MOTOR

Horizontal

300-1200 CFM

Ceiling Concealed
Ceiling Recessed
Ceiling Exposed

• HIGH EFFICIENCY • HIGH PERFORMANCE

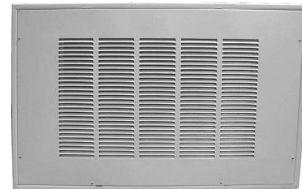
ECM Motor Options

The ECM motor option includes 24V controls, a constant torque, permanent magnet, brushless DC motor, with 4 discrete speed taps that allow for high static applications and precise air balancing

MERV 8

LOUVERED ACCESS PANELS

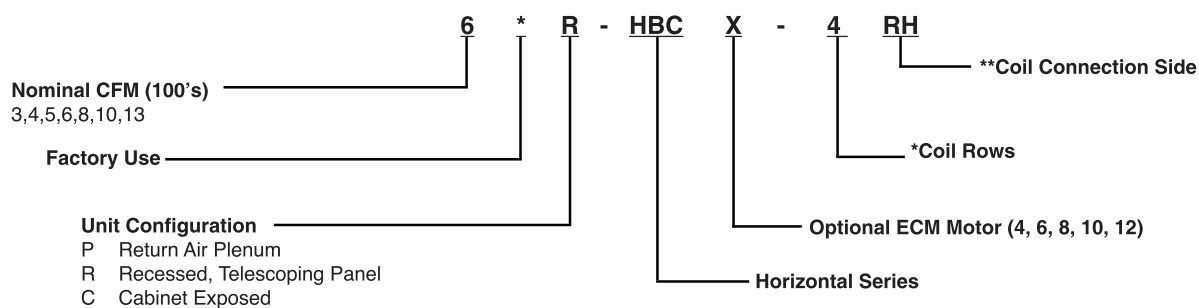
Page 29



First Company
P.O. Box 270969
Dallas, TX 75227
Ph. (214)-388-5751
www.firstco.com

Table of Contents	2	Blower Performance Tables (PSC Motor)	
Nomenclature	2	120/1/60	
Features	3	HBC	13
		PHBC (With Plenum)	14
		RHBC (Recessed with Panel)	15
Physical Data	4-7	277/1/60	
Cooling Performance	8-10	HBC	16
Heating Performance	11	PHBC (With Plenum)	17
		RHBC (Recessed with Panel)	18
Correction Factors	12	220/1/50	
Blower Performance PSC Motor	13-22	HBC	19
Blower Performance ECM Motor	23-26	PHBC (With Plenum)	20
		RHBC (Recessed with Panel)	21
Guide Specifications	27-28	CHBC (Cabinet Exposed)	All Voltages 22
Access/Filter Panels	29	Blower Performance Tables (ECM Motor)	
Accessories	30-31	(120/1/60)	
		HBCX	3-Row 23
		PHBCX	3-Row (With Plenum) 24
		RHBCX	3-Row (Recessed with Panel) 25
		CHBCX	3-Row (Cabinet Exposed) 26
		HBCX	4-Row 23
		PHBCX	4-Row (With Plenum) 24
		RHBCX	4-Row (Recessed with Panel) 25
		CHBCX	4-Row (Cabinet Exposed) 26
		HBCX	32-Row 25
		CHBCX	32-Row (Cabinet Exposed) 26
		HBCX -277	4-Row 27

MODEL NOMENCLATURE



**Coil Connection Side

RH Right Hand (default)
LH Left Hand

Hand connection is determined by
looking with airflow

*Coil Configurations

Rows	Description
3	2-Pipe 3 Row
4	2-Pipe 4 Row
31	4-Pipe 3 Row Cooling, 1-Row Hot Water
32	4-Pipe 3 Row Cooling, 2-Row Hot Water
41	4-Pipe 4 Row Cooling, 1-Row Hot Water

Available Voltage (PSC Motors)

120V/1/60
208-230V/1/60
220V/1/50
277V/1/60

Available Voltage (ECM Motors)

120V/1/60



NEW! ECM Motor Option

This new ECM motor option includes 24V controls, a constant torque, permanent magnet, brushless DC motor, with 4 discrete speed taps that allow for precise air balancing.

Standard Features

Basic Unit - All fan coils are manufactured with heavy gauge galvanized steel to resist corrosion. All models are approved for installation with "0" clearance to combustible material.

Insulation - Plenums and cabinets are insulated with Tuf-Skin dual density fiber glass blanket insulation with an anti-microbial agent.

Ceiling Panels - Hinged access/return panels are manufactured with heavy gauge galvanized steel with captive mounting screws and an attractive white baked powder finish.

Condensate Pans - Positive sloped drain pans are galvanized steel, coated on the inside surface with a U.L. Listed closed cell, fire retardant, foam insulation. Pan includes both primary and secondary drain connections.

Return Air Plenums - Return air plenums are manufactured from galvanized steel insulated with Tuf-Skin dual density fiber glass blanket insulation and a 1" TA fiber glass filter.

Coils - Constructed with seamless copper tubes and headers. The tubes are mechanically expanded into corrugated aluminum fin material for a permanent primary to secondary surface bond. Coils are tested under water at 350 PSI for operation at 300 PSI. Coils include manual air vents.

Fan Wheels-Housing - are double width, double inlet (DWDI) forward curved, centrifugal type. Wheels are statically and dynamically balanced for smooth, quiet operation. The housing is constructed from heavy gauge galvanized steel with die-formed inlet cones.

Motors - Standard motors are PSC, permanently lubricated type with internal thermal overload protection.

Options

Factory mounted options include ECM motors 120V only, stainless steel drain pans, foil faced cabinet insulation, Multi-24 3-speed 24V control, valve packages, thermostats, aqua stats, service switches. 120V, 208V/230V, 277V, 60hz and (220/50hz, PSC MOTORS ONLY)



*Factory use
(X) Denotes with ECM motor

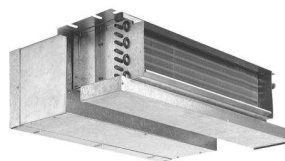
*HBC(X) Series - Ceiling Concealed

The * HBC series is designed for fully concealed applications. This 10" high space saving unit provides easy access for service and maintenance.

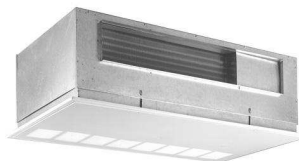


*PHBC(X) Series - Ceiling Concealed with Plenum

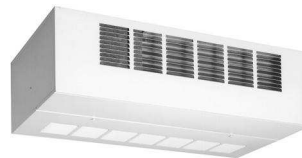
The * HBC series is designed for fully concealed applications. This 10" high space saving unit provides easy access for service and maintenance.



***RHBC(X) Series - Ceiling Recessed** includes adjustable hinged access/return panel with 1" TA fiber glass filter. The cabinet allows for a field mounted rear return duct connection by using a solid access panel.



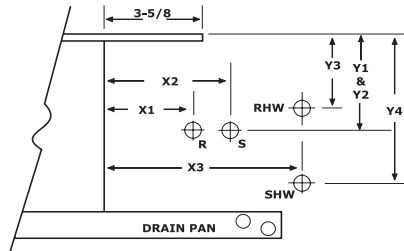
***CHBC(X) Series - Ceiling Exposed** cabinet with an attractive baked powder finish. Cabinet includes stamped discharge opening and hinged bottom panel with 1" TA fiber glass filter.



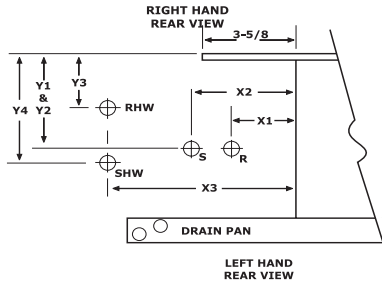
Product Specifications

Horizontal Fan Coils
2-Pipe/4-Pipe Hydronic

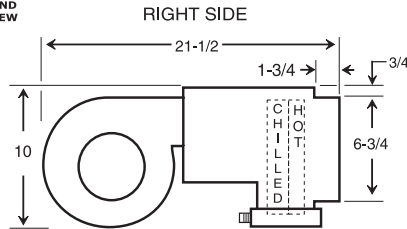
*HBC PHYSICAL DATA



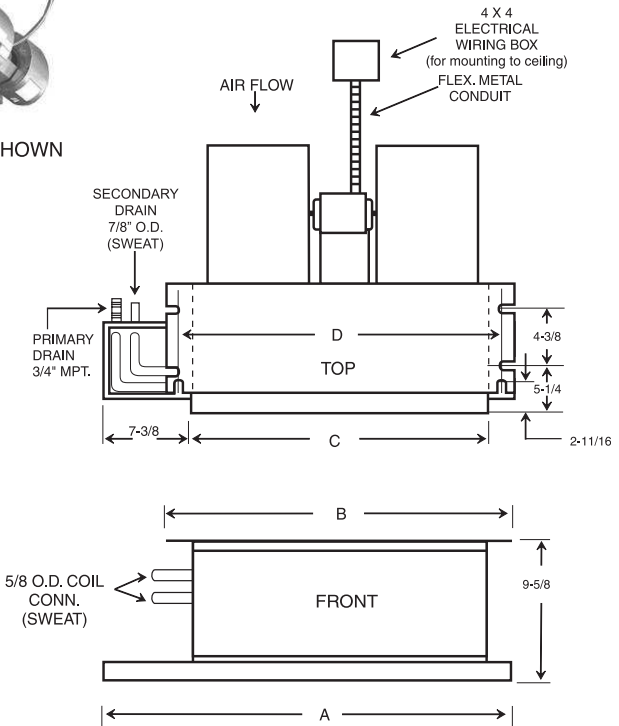
LEFT HAND MODEL SHOWN



RIGHT HAND
REAR VIEW



4 - PIPE UNIT SHOWN



NOTE: RIGHT HAND MODEL SHOWN - LEFT HAND
MODEL HAS DRAIN AND PIPING CONNECTIONS ON
OPPOSITE SIDE OF FAN COIL.

GENERAL DIMENSIONS

MODEL	A	B	C	D
3*HBC	30-1/8	27-1/4	20-1/8	25-1/4
4*HBC(X)	36-1/8	33-1/4	26-1/8	31-1/4
5*HBC	40-1/8	37-1/4	30-1/8	35-1/4
6*HBC(X)	40-1/8	37-1/4	30-1/8	35-1/4
8*HBC(X)	46-1/8	43-1/4	36-1/8	41-1/4
10*HBC(X)	52-1/8	49-1/4	42-1/8	47-1/4
12*HBC(X)	59-1/8	56-1/4	49-1/8	54-1/4
13*HBC	59-1/8	56-1/4	49-1/8	54-1/4

(X)- Available with ECM motor

OPTIONAL FIELD MOUNTED RETURN AIR PLENUM KITS

PART NO	FOR MODEL NO.	DIMENSIONS (H X W X D)	SHIP WT.
916-1-STK	3*HBC	10 X 24 X 12-1/2	18
916-2-STK	4*HBC(X)	10 X 30 X 12-1/2	22
916-3-STK	5*HBC	10 X 34 X 12-1/2	22
916-3-STK	6*HBC(X)	10 X 34 X 12-1/2	22
916-4-STK	8*HBC(X)	10 X 40 X 12-1/2	24
916-5-STK	10*HBC(X)	10 X 46 X 12-1/2	27
916-6-STK	13*HBC	10 X 53 X 12-1/2	30

NOTES:

- 1) ALL DIMENSIONS IN INCHES.
- 2) COIL CONNECTION TOLERANCE $\pm 1/4"$.
- 3) RIGHT HAND UNIT SHOWN, LEFT HAND MIRROR IMAGE.
(HAND IS DETERMINED BY FACING THE BLOWER END)

HBC HEADER LOCATIONS

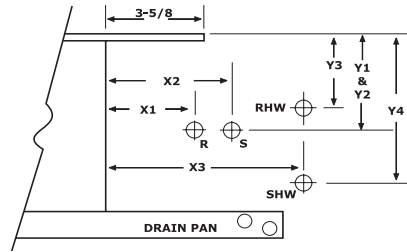
RIGHT HAND	X1	Y1	X2	Y2	X3	Y3	Y4
3 ROW	3	4-1/4	5	4	---	---	---
3/1 Split	3	4-1/4	5	4	8	3-1/2	5-1/2
3/2 Split	3	4-1/4	5	4	8	3-1/2	5-1/2
4 ROW	3	4-1/4	5	4	---	---	---
4/1 Split	3	4-1/4	5	4	8	4	6

HBC HEADER LOCATIONS

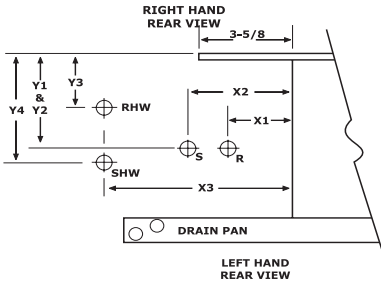
LEFT HAND	X1	Y1	X2	Y2	X3	Y3	Y4
3 ROW	3	3-3/4	5	4	---	---	---
3/1 Split	3	3-3/4	5	4	8	2-1/2	4-1/2
3/2 Split	3	3-3/4	5	4	8	2-1/2	4-1/2
4 ROW	3	3-3/4	5	4	---	---	---
4/1 Split	3	3-3/4	5	4	8	2	4

Product Specifications
Horizontal Fan Coils
2-Pipe/4-Pipe Hydronic

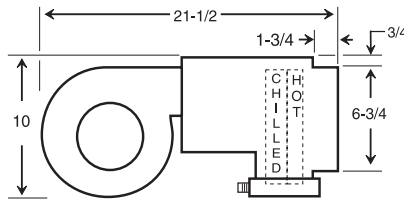
***HBC
PHYSICAL DATA**



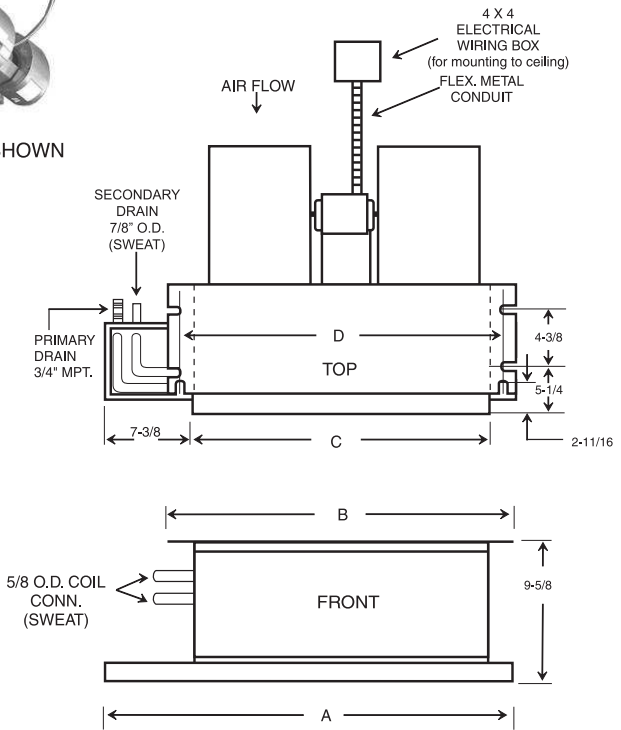
LEFT HAND MODEL SHOWN



RIGHT SIDE



4 - PIPE UNIT SHOWN



NOTE: RIGHT HAND MODEL SHOWN - LEFT HAND MODEL HAS DRAIN AND PIPING CONNECTIONS ON OPPOSITE SIDE OF FAN COIL.

GENERAL DIMENSIONS				
MODEL	A	B	C	D
3*HBC	30-1/8	27-1/4	20-1/8	25-1/4
4*HBC(X)	36-1/8	33-1/4	26-1/8	31-1/4
5*HBC	40-1/8	37-1/4	30-1/8	35-1/4
6*HBC(X)	40-1/8	37-1/4	30-1/8	35-1/4
8*HBC(X)	46-1/8	43-1/4	36-1/8	41-1/4
10*HBC(X)	52-1/8	49-1/4	42-1/8	47-1/4
12*HBC(X)	59-1/8	56-1/4	49-1/8	54-1/4
13*HBC	59-1/8	56-1/4	49-1/8	54-1/4

(X)- Available with ECM motor

NOTES:

- 1) ALL DIMENSIONS IN INCHES.
- 2) COIL CONNECTION TOLERANCE $\pm 1/4"$.
- 3) RIGHT HAND UNIT SHOWN, LEFT HAND MIRROR IMAGE.
(HAND IS DETERMINED BY FACING THE BLOWER END)

OPTIONAL FIELD MOUNTED RETURN AIR PLENUM KITS			
PART NO	FOR MODEL NO.	DIMENSIONS (H X W X D)	SHIP WT.
916-1-STK	3*HBC	10 X 24 X 12-1/2	18
916-2-STK	4*HBC(X)	10 X 30 X 12-1/2	22
916-3-STK	5*HBC	10 X 34 X 12-1/2	22
916-3-STK	6*HBC(X)	10 X 34 X 12-1/2	22
916-4-STK	8*HBC(X)	10 X 40 X 12-1/2	24
916-5-STK	10*HBC(X)	10 X 46 X 12-1/2	27
916-6-STK	13*HBC	10 X 53 X 12-1/2	30

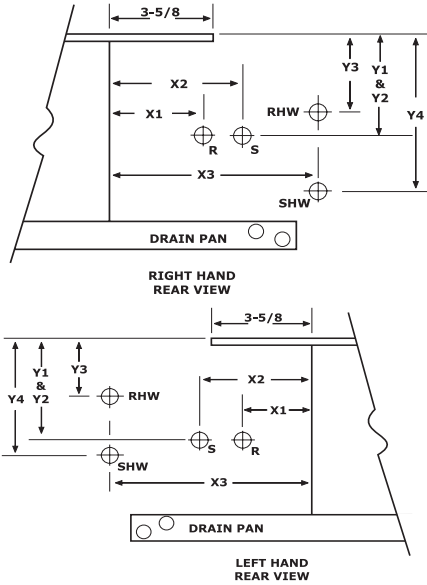
HBC HEADER LOCATIONS							
RIGHT HAND	X1	Y1	X2	Y2	X3	Y3	Y4
3 ROW	3	4-1/4	5	4	---	---	---
3/1 Split	3	4-1/4	5	4	8	3-1/2	5-1/2
3/2 Split	3	4-1/4	5	4	8	3-1/2	5-1/2
4 ROW	3	4-1/4	5	4	---	---	---
4/1 Split	3	4-1/4	5	4	8	4	6

HBC HEADER LOCATIONS							
LEFT HAND	X1	Y1	X2	Y2	X3	Y3	Y4
3 ROW	3	3-3/4	5	4	---	---	---
3/1 Split	3	3-3/4	5	4	8	2-1/2	4-1/2
3/2 Split	3	3-3/4	5	4	8	2-1/2	4-1/2
4 ROW	3	3-3/4	5	4	---	---	---
4/1 Split	3	3-3/4	5	4	8	2	4

Product Specifications

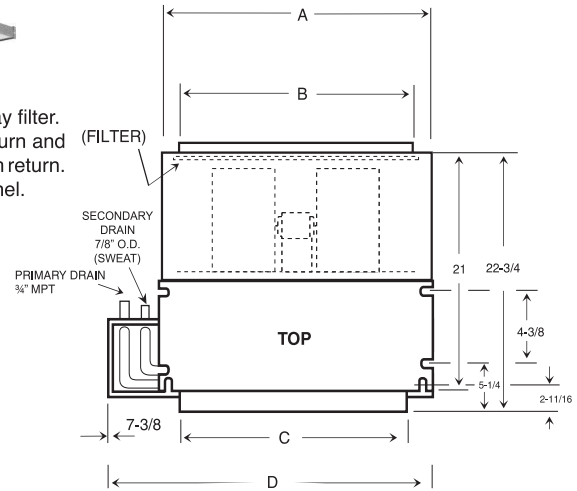
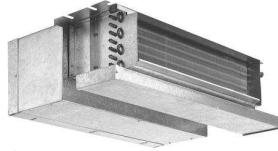
Horizontal Fan Coils
2-Pipe/4-Pipe Hydronic

*PHBC PHYSICAL DATA

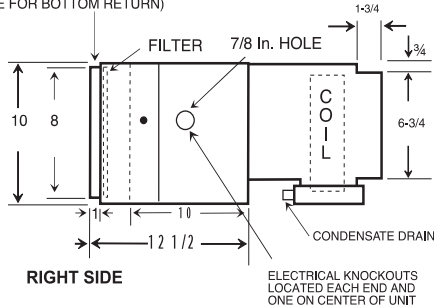


NOTES:

1. Return plenums are insulated.
2. All plenums include throw-away filter.
3. Standard plenums are end return and can be field converted to bottom return.
4. Filter has separate access panel.



DUCT FLANGE
(REMOVE FOR BOTTOM RETURN)



NOTE: RIGHT HAND MODEL SHOWN - LEFT HAND MODEL HAS DRAIN AND PIPING CONNECTIONS ON OPPOSITE SIDE OF FAN COIL.

GENERAL DIMENSIONS							
MODEL	A	B	C	D	E	FILTER SIZE (INCL.)	CONNECTIONS PRIMARY O.D.
3*PHBC	24	22	20-1/8	30-1/8	27-1/4	10 X 24	5/8"
4*PHBC(X)	30	28	26-1/8	36-1/8	33-1/4	10 X 30	
5*PHBC	34	32	30-1/8	40-1/8	37-1/4	10 X 34	
6*PHBC(X)	34	32	30-1/8	40-1/8	37-1/4	10 X 34	
8*PHBC(X)	40	38	36-1/8	46-1/8	43-1/4	10 X 40	
10*PHBC(X)	46	44	42-1/8	52-1/8	49-1/4	10 X 46	
12*PHBC(X)	53	51	49-1/8	59-1/8	56-1/4	10 X 53	
13*PHBC	53	51	49-1/8	59-1/8	56-1/4	10 X 53	

(X)- Available with ECM motor

NOTES:

- 1) ALL DIMENSIONS IN INCHES.
- 2) COIL CONNECTION TOLERANCE $\pm 1/4"$.
- 3) RIGHT HAND UNIT SHOWN, LEFT HAND MIRROR IMAGE.
(HAND IS DETERMINED BY FACING THE BLOWER END)

PHBC HEADER LOCATIONS							
RIGHT HAND	X1	Y1	X2	Y2	X3	Y3	Y4
3 ROW	3	4-1/4	5	4	---	---	---
3/1 Split	3	4-1/4	5	4	8	3-1/2	5-1/2
3/2 Split	3	4-1/4	5	4	8	3-1/2	5-1/2
4 ROW	3	4-1/4	5	4	---	---	---
4/1 Split	3	4-1/4	5	4	8	4	6

PHBC HEADER LOCATIONS							
LEFT HAND	X1	Y1	X2	Y2	X3	Y3	Y4
3 ROW	3	3-3/4	5	4	---	---	---
3/1 Split	3	3-3/4	5	4	8	2-1/2	4-1/2
3/2 Split	3	3-3/4	5	4	8	2-1/2	4-1/2
4 ROW	3	3-3/4	5	4	---	---	---
4/1 Split	3	3-3/4	5	4	8	2	4