

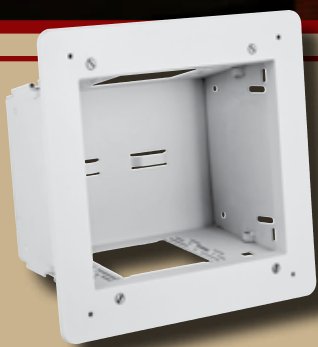
Hubbell's AV In-Wall Enclosure Solutions



Commercial Solutions



Residential Solutions



Connections You Can Count On

Reliable connections and wire management are easily achieved with Hubbell's variety of box and enclosure solutions for commercial and residential environments.

Commercial Solutions



Flat Panel Connection Enclosure

When high connectivity is required, use Hubbell's Flat Panel Connection Enclosure. This product accommodates connections for HDMI, DVI, RG6/UQ and VGA, and allows for high density cables to hide behind the wall or entertainment center. It is ideal for TV's, Smartboards, or entertainment centers in commercial environments including: education, restaurants, hotels, and offices where sacrificing data speed is not an option.

Features

- Integrated cable management
- Accepts standard electrical boxes
- Multiple device mounting options
- Sheet metal base, white powder coat finish
- Easily mounts to studs or sheetrock
- Trim ring covers rough-in

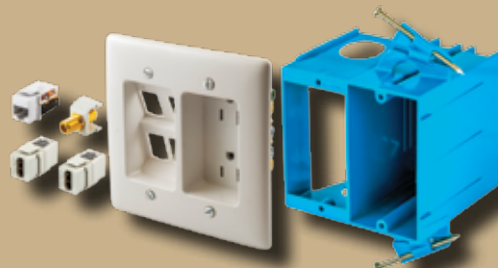


Utilize readily available and cost effective UTP data cables for AV with Hubbell's AV over UTP solutions. These AV extenders feature punch down terminations that provide quick high performance terminations.



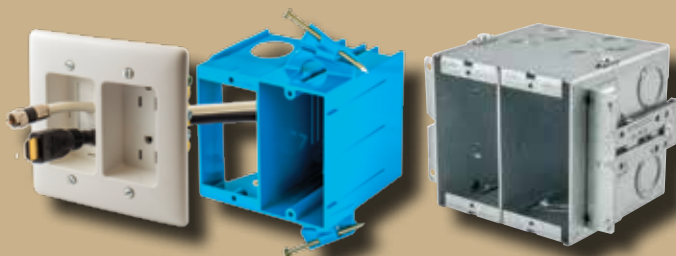


Residential Solutions



Recessed Receptacle with Snap Fit

Recessed Thermoplastic Box



Recessed Receptacle with Feed-Through

Metal Wallbox

Hubbell has solutions for residential environments where wire management is a concern. Products sit flush against the wall and are available in multiple colors, creating an aesthetically pleasing look. Large connectors and cables are held securely and bundled together neatly. All wires are concealed behind the wall and out of view. Snap Fit options are used for customizing your connections.

Features

Receptacles

- Snap Fit is configurable to accommodate multiple connectors such as: HDMI, AV, and Voice/Low-Speed Data
- Feed-Through options allows you to make direct connections
- 15A 125V
- Back and side wired

Boxes

- Available in plastic or metal boxes to accommodate local building requirements



Hubbell's AV In-Wall product line has solutions for even the most simple installations. These recessed cable plates protect low voltage cables and hold them securely, creating a direct connection.



NSAV6C



NSAV62M

FPTV Connection Enclosure

Description	Color	Catalog Number
2-Gang in-wall enclosure	White	NSAV62M
4-Gang in-wall enclosure	White	NSAV124M
Steel cover for NSAV6 series	White	NSAV6C
Steel cover for NSAV12 series	White	NSAV12C



NSOKPS

Power Kits

Description	Color	Catalog Number
Standard power kit	White	NSOKPTR
Surge protected power kit	Blue	NSOKPS



HBL985

Gangable AV Wallbox

Box	Catalog Number
2-Gang, 4 in. deep, 2" KO, 54 in ³ capacity	HBL985
Divider for low voltage	HBL989

Audio/Video Connectors



Color	Standard	Recessed
Almond	SFFGAL	-
Black	SFFGBK	SFGRFBK
Electric Ivory	SFFGEI	SFGRFEI
Gray	SFFGGY	SFGRFGY
Office White	SFFGOW	SFGRFOW
White	SFFGW	SFGRFW



NS801W



NS802W

HDMI Decorator Frames

Description	Color	1-Gang, 1-Port	1-Gang, 2-Port
HDMI, decorator frame, female to female	Almond	NS801AL	NS802AL
	Black	NS801BK	NS802BK
	Gray	NS801GY	NS802GY
	Ivory	NS801I	NS802I
	Light Almond	NS801LA	NS802LA
	White	NS801W	NS802W



RR1500

Recessed AV Wallbox

Description	Color	Catalog Number
2-Gang, nail-on box, thermoplastic	Blue	RR1500

Molded-In Voice/Low-Speed Data, Modular Snap Fit



NSJ5EW

Color	Cat. 5e Jack (single)	Cat. 5e Jack (25 pack)
Black	NSJ5EBK	NSJ5EBK25
Blue	NSJ5EB	NSJ5EB25
Gray	NSJ5EGY	NSJ5EGY25
Green	NSJ5EGN	NSJ5EGN25
Ivory	NSJ5EI	NSJ5EI25
Light Almond	NSJ5ELA	NSJ5ELA25
Orange	NSJ5EOR	NSJ5EOR25
Red	NSJ5ER	NSJ5ER25
White	NSJ5EW	NSJ5EW25
Yellow	NSJ5EY	NSJ5EY25



SFHC14W

HDMI Keystone Feed-Thru

Color	Catalog Number
Black	SFHC14BK
White	SFHC14W



RR1510I



RR1512I



RR1514I

Recessed Receptacles

Color	15A 125V, Tamper-Resistant Duplex Receptacle		
	1-Gang	2-Gang with Feed-Through	2-Gang with Snap Fit
Ivory	RR1510I	RR1512I	RR1514I
Light Almond	RR1510LA	RR1512LA	RR1514LA
White	RR1510W	RR1512W	RR1514W



NSAV1I



NSAV2I

Feed-Through Plates

Color	1-Gang	2-Gang
Ivory	NSAV1I*	NSAV2I*
White	NSAV1W*	NSAV2W*



NP26W



NSP16W

Plates

Description	Color	Catalog Number
1-Gang decorator	White	NP26W
1-Gang 6-port snap fit	White	NSP16W

Please see the tradeSELECT® and netSELECT® sections of the full line Hubbell Catalog for complete product offering.