

PLATINUM® SERIES VACUUM PUMPS

OPERATING INSTRUCTIONS & PARTS MANUAL

2-STAGE,
DIRECT DRIVE



TABLE OF CONTENTS

About the Platinum® Pump.....	2	Operation.....	3
Specifications.....	2	Digital Vacuum Gauge.....	3
Caring for your Pump.....	3	Repair parts.....	4
Oil.....	3	Troubleshooting.....	4
Changing Oil.....	3	Warranty.....	4

CONNECT WITH US



AMERICAN
MADE  JB

JB INDUSTRIES

WWW.JBIND.COM 800.323.0811 SALES@JBIND.COM



TM

ABOUT THE PLATINUM® PUMP

***25,400 MICRONS=1"**

Each PLATINUM® pump has been factory tested to guarantee 15 micron* or better and listed CFM performance. The serial number has been recorded. Complete and mail the Warranty Registration Card within 10 days of purchase to validate your warranty. Or you can register your product on-line at www.jbind.com. You will be notified of any technical updates.

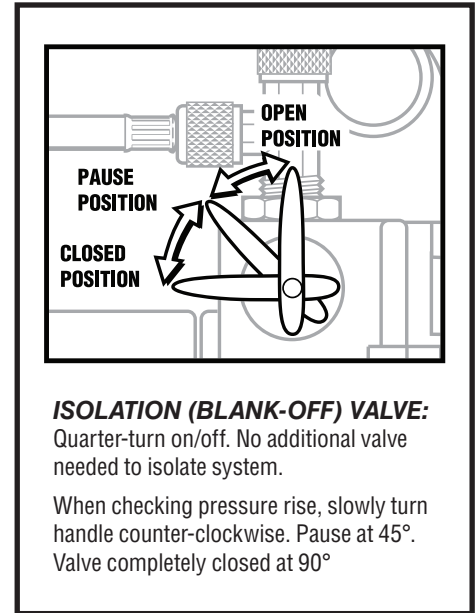
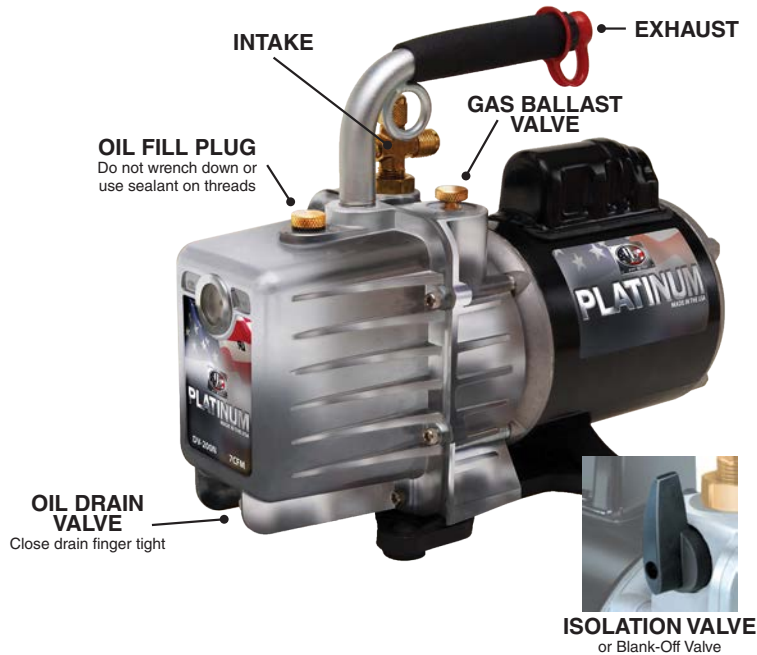
NOTE Platinum® pumps are not to be used on Ammonia or Lithium Bromide (salt water) systems. Pump maintenance is the responsibility of the owner.

**PLEASE READ THE
"KEEPING THE LIFE IN YOUR PUMP" BOOKLET**

SPECIFICATIONS

PUMP MOTOR:

Pump and oil must be above 30°F. Line voltage must be equal to motor nameplate ±10%. Normal operating temperature is approximately 160°F, which is hot to the touch. Line voltage and ambient conditions will affect this somewhat. Motor has automatic resetting thermal overload protection. Platinum® is designed for continuous duty and will run for extended periods without overheating.



US DOMESTIC

	DV-42N	DV-85N	DV-142N	DV-200N	DV-285N
CFM	1.5 CFM (42 l/m)	3 CFM (85 l/m)	5 CFM (142 l/m)	7 CFM (200 l/m)	10 CFM (285 l/m)
MOTOR	1/2 HP, 1725 RPM	1/2 HP, 1725 RPM	1/2 HP, 1725 RPM	1/2 HP, 1725 RPM	1/2 HP, 1725 RPM
VOLTAGE	115v, 60Hz	115v, 60Hz	115v, 60Hz	115v, 60Hz	115v, 60Hz
INTAKE PORT	1/4"	1/4" x 3/8"	1/2" x 1/4" x 3/8"	1/2" x 1/4" x 3/8"	1/2" x 1/4" x 3/8"
OIL CAPACITY	26 oz (798 cc)	26 oz (798 cc)	21 oz (680)	21 oz (680)	26 oz (798 cc)

DUAL VOLTAGE (-250 series)

	DV-42N-250	DV-85N-250	DV-142N-250	DV-200N-250	DV-285N-250
MOTOR	1/2 HP, 1725/1425 RPM	1/2 HP, 1725/1425 RPM	1/2 HP, 1725/1425 RPM	1/2 HP, 1725/1425 RPM	1/2 HP, 1725/1425 RPM
VOLTAGE	115v, 60Hz, 230v/50Hz	115v, 60Hz, 230v/50Hz	115v, 60Hz, 230v/50Hz	115v, 60Hz, 230v/50Hz	115v, 60Hz, 230v/50Hz

IMPORTANT:
THIS UNIT HAS BEEN DRAINED OF OIL FOR SHIPMENT. DO NOT ATTEMPT TO OPERATE WITHOUT ADDING OIL.

CARING FOR YOUR PUMP

In order to make the best use of your investment, familiarize yourself with the new features and operation instructions before starting pump. With just routine care your PLATINUM® will give you years of reliable service by following proper maintenance guidelines. PLATINUM® pumps are designed for deep vacuum work in refrigeration systems only.

IMPORTANT: Use oil specifically refined for deep vacuum pumps. Using oil not refined for deep vacuum pumps and/or operation with contaminated oil will void warranty.

OIL

Slowly add oil until oil level rises to the top of the OIL LEVEL line.
Replace oil fill plug.

If oil is too low, you will hear air out of the exhaust. If the oil level is too high, excess oil will be blown out the exhaust. Pump oil should be changed after each use. If system is heavily contaminated, oil may have to be changed several times during evacuation.

After initial fill up of oil, it is best to check oil level with pump running.

**AFTER EVACUATION, OIL CONTAINS RUST FORMING WATER AND CORROSIVE ACIDS.
DRAIN IMMEDIATELY WHILE PUMP IS WARM.**

CHANGING OIL

To reach deep vacuum, Platinum® pumps need clean, moisture-free oil throughout evacuation. Care should be taken to avoid contact on skin and clothing when changing oil. Used oil should be disposed of in leak-proof corrosive-resistant container.

- 1 After every evacuation while pump is warm and oil is thin, place pump on level surface and open oil drain. Oil can be forced from the pump by opening one intake and partially blocking the exhaust with a cloth while the pump is running. DO NOT operate the pump for more than 20 seconds using this method.
- 2 Close drain. Remove oil fill cap and fill to top of OIL LEVEL line with **BLACK GOLD Pump Oil**. Replace oil fill cap.

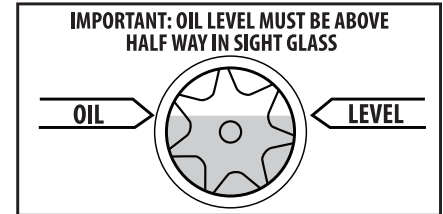
FLUSHING:

If the oil is badly contaminated, flushing may be necessary.

Slowly pour 1/3 - 1/2 cup of BLACK GOLD Pump Oil into the intake connection while pump is running. Repeat as required until contamination is removed from oil reservoir, pump rotors, vanes and housing.

Dispose of all oil used in flushing of pump.

IMPORTANT
DO NOT START PUMP BEFORE ADDING OIL



DIGITAL VACUUM GAUGES

DV-22N:

- Reads vacuum in 7 international Units: Microns, PSIA, InHg, MBars, Pascals, Torr, MTorr.
- Digital display with solid state circuitry +32°F to +120°F (0°C to 48.9°C) ambient temperature.
- NIST Traceable
- Solid state design - No adjustment necessary for temperature
- Automatic power off battery saver
- Saves last vacuum readout after shutdown
- Low battery indicator

OPERATION

The following procedures will prevent oil from being drawn into the pump cartridge and creating hard start-up.

START-UP:

Open one intake port and isolation valve, close gas ballast valve and start pump. Make vacuum connections.

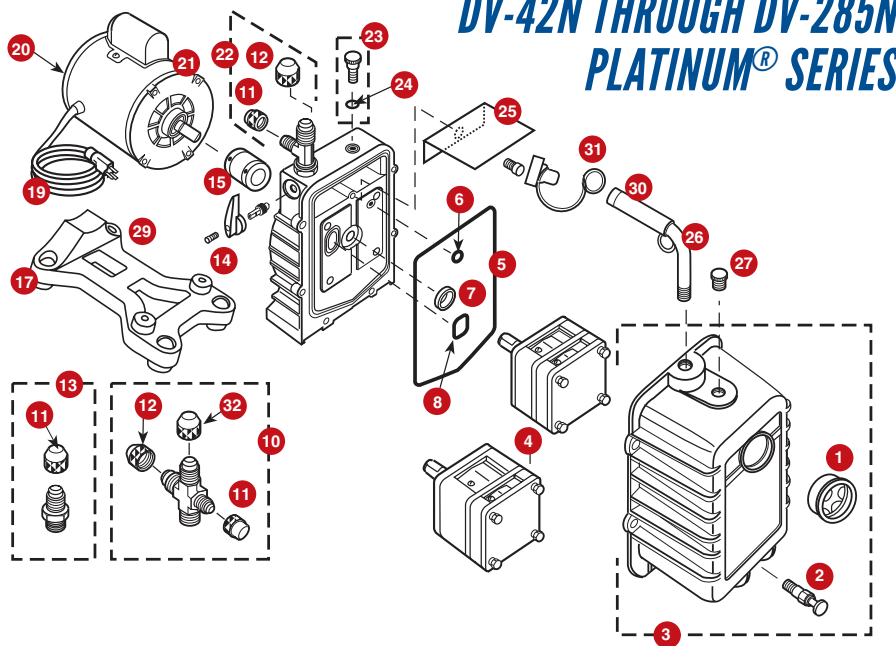
Crack gas ballast valve for the first part of the evacuation procedure. After pump quiets down from initial volume of air, close valve and continue evacuating. Failure to close valve will result in poor pump performance.

SHUT-DOWN:

Close isolation valve and open gas ballast valve all the way. Continue running pump for 2-3 seconds. With gas ballast valve still opened, stop pump and then close valve.

Remove hose connections and cap intakes.

REPAIR PARTS



DV-42N THROUGH DV-285N PLATINUM® SERIES

REF. NO. | PART NO. | DESCRIPTION

PLATINUM® PUMP REPAIR PARTS

1	PR-1	Sight glass
2	PR-2	Drain valve
3	PR-300	DV-42N through DV-200N cover Assy. w/sight glass and drain valve
3	PR-301	DV-285N cover Assy. w/sight glass and drain valve
3	PR-200	No longer available. Can substitute PR-201
3	PR-201	DV-142N & DV-200N cover Assy. w/ sight glass, drain valve & guard
4	PR-302	DV-85N cartridge w/O-rings and cover seal
4	PR-303	DV-142N cartridge w/O-rings and cover seal
4	PR-304	DV-200N cartridge w/O-rings and cover seal
4	PR-314	DV-285N cartridge w/O-rings and cover seal
5	PR-217	Cover seal
5	PR-311	Cover seal
6	PR-211	Trap O-ring, gas ballast
7	PR-3	Shaft seal
8	PR-215	Trap O-ring, intake
8	PR-315	Trap O-ring, intake
9	PR-4	Rubber foot & screw assembly (1 per package)
10	PR-76	Intake caps with cross
11	NFT5-4	1/4" O-ring, intake
12	NFT5-6	3/8" O-ring cap
12A	NFT5-8	1/2" O-ring cap
13	PR-32	1/4" Intake cap
14	PR-209	Plastic isolation valve handle and screw w/ stem and retainer (not interchangeable w/PR-210)
14	PR-210	Metal isolation valve handle and screw
15	PR-208	Flexible Coupler
15	PR-308	Flexible Section Only
15	PR-6	Flexible Coupler
15	PR-77	Flexible Section Only
16	PR-42	Motor Foot With Screw
17	PR-59	Base Foot
19	PR-31	Line Cord (Emerson Motor)
19	PR-58	Line Cord (Marathon Motor)
20	PR-35	Rocker Switch With Prongs (Marathon 1101-0105)
20	PR-54	Rocker Switch With Wire Leads (Emerson)
21	PR-206	1/2 Hp, 115v, 60 Hz Motor With Line Cord And Switch
21	PR-207	1/2 Hp, 115/230v, 50/60 Hz Motor w/ Line Cord And Switch
22	PR-5	Intake Tee With Caps
23	PR-7	Gas Ballast Valve With O-ring
24	P90009	O-ring, Gas Ballast Valve
25	PR-40	Splash Guard And Screw (Excludes 3 CFM Manufactured Before 1/01. Use PR-39.)
26	PR-75	Cushioned Handle With Lift Ring 1/2" NPT And DV-EP-8 As Of 2008
26	PR-205	Cushioned Handle 3/8" NPT
27	PR-22	Oil Fill Plug with O-ring
28	PR-56	Adapter Nut With O-ring
29	PR-62	Pump Base (Includes Feet)
30	PR-500	Cushion And Cap 3/8" NPT
30	PR-501	Cushion And Cap 1/2" NPT
31	DV-EP6	Tethered Safety Cap 3/8"
31	DV-EP8	Tethered Safety Cap 1/2"
32	NFT5-8	1/2 Cap With O-ring

TROUBLESHOOTING

Symptom	Possible Cause(s)	Corrective Action
Pump won't start	<ol style="list-style-type: none"> Power cord not plugged in securely Motor switch not on Pump temp. below 30°F Inconsistent line voltage 	<ol style="list-style-type: none"> Plug power cord in securely Turn motor switch to ON position Warm up pump to 30°F & turn motor switch on Line voltage must be within 10% of 115 volts
Pump won't pull deep vacuum	<ol style="list-style-type: none"> Contaminated oil Oil level too low Air leak in system being evacuated Pump inlet fittings missing or not tightened Coupler slipping 	<ol style="list-style-type: none"> Change oil Add oil Locate & repair leak(s) Clean or replace O-ring Tighten coupler setscrews to flats of cartridge and motor
Oil drips from point where shaft enters the pump housing	Damaged oil seal	Replace
Pump shuts down and will not start	Thermal overload may be open	Disconnect pump from system. Wait about 15 minutes for motor to cool and turn it on again. If it cycles off again, return pump to factory for repair.
Pump cycles on and off from a completely cold start and then runs smoothly	Oil backed up into cartridge and was being cleared out. Pump has not been shutdown properly.	Remove 1/4" cap then turn pump on

WARRANTY

Platinum® pumps are warranted against defects in materials and workmanship for 2 years. All JB products are guaranteed when used in accordance with our directions and recommendations, and we limit this warranty to the repair, replacement, or credit at invoice price (our option) of products which in our opinion are defective due to defects in workmanship and/or materials. In no case will we allow charges for labor, expense or consequential damage. Repairs performed on items out of warranty will be invoiced on a nominal basis. Contact your wholesaler for details.



JB INDUSTRIES INC.
Aurora IL 60505 USA
Form 10185-308
Printed in the USA
©2015 JB Industries, Inc.

Main Warehouse
JB INDUSTRIES, INC.
PO Box 1180 Dept. 85
Aurora, IL 60507-1180 USA
sales@jbind.com
Toll Free Technical Service #: 800.323.0811

CANADA
ALLTEMP products co., LTD.
827 Brock Road South Pickering,
Ont., Canada L1E 3J2
Phone: 905.831.3311
Fax: 905.831.1864