



T430.502 Bath/Shower Trim Shown

**GENERAL DESCRIPTION:**

**SHOWERHEAD**

All brass 6-3/4" rain showerhead at maximum 2.5 gpm/9.5 L/min. flow rate. 12" Brass right angle shower arm.

**WALL TUB SPOUT**

Slip-on diverter spout.

**WALL VALVE TRIM**

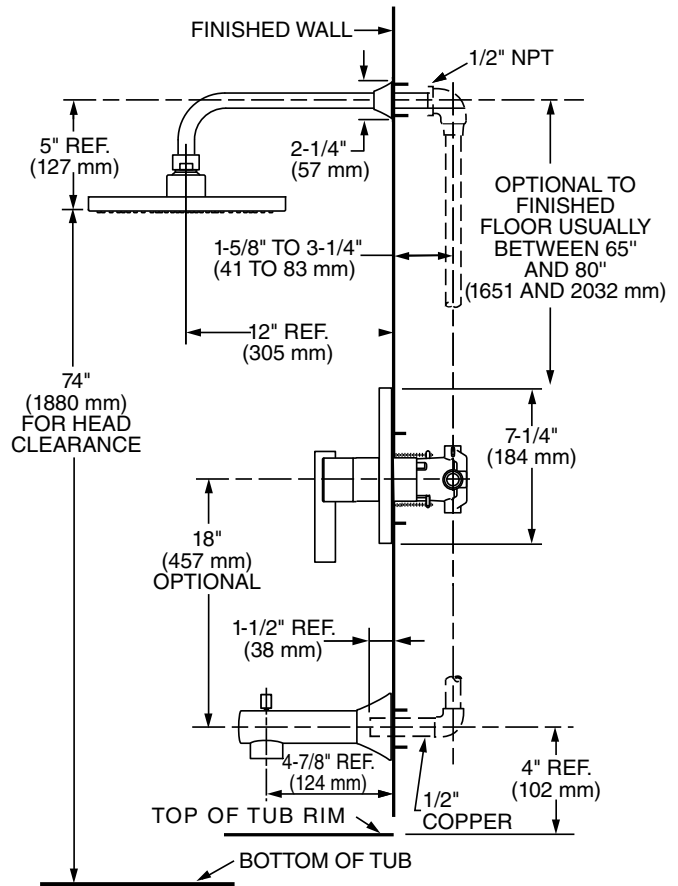
Available with metal lever handle.  
 Metal wall escutcheon.

**MODEL NUMBER:**

**TRIM KITS:**

- ☐ T430.502 Berwick BATH/SHOWER Trim Kit  
 Metal Lever Handle. LESS Valve Body.
- ☐ T430.501 Berwick SHOWER Only Trim Kit  
 Metal Lever Handle. LESS Valve Body.
- ☐ T430.500 Berwick VALVE ONLY Trim Kit  
 Metal Lever Handle. LESS Valve Body.

*For use with R110 Series Pressure Balance Valves.  
 See reverse side for available Rough Valves.*



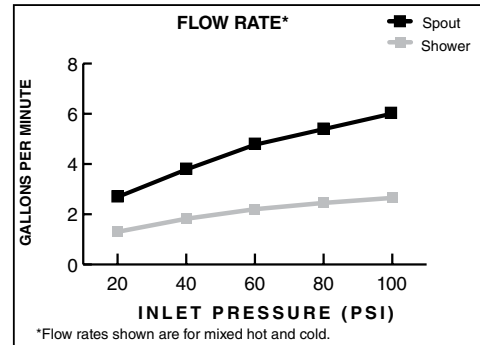
**SUGGESTED SPECIFICATION:**

Bath/shower fitting shall feature all brass rain 6-3/4" showerhead with Max. 2.5 gpm/9.5 L/min. flow rate. Fitting shall be: American Standard Trim Kit Model # T430.50\_ and Valve Body Model # R11\_.

**CODES AND STANDARDS**

These products meet or exceed the following codes and standards:

- ANSI A 117.1
- ASSE 1016
- ASME A112.18.1
- CSA B 125.1



Modifications	Parts Suffix*
	__IPT
	__WD

\*To modify a product, add suffix after the 4<sup>th</sup> digit (ex. T064**ITP**502.002)

TRIM KITS *	Product Number	Description	* TRIM & ROUGH MUST BE ORDERED SEPARATELY.		Finish Options	
					Polished Chrome	PVD Satin Nickel
					002	295
	T430.502	Bath/Shower Trim Kit. Metal Lever Handle. FloWise Showerhead. LESS Valve Body.				
	T430.501	Shower Only Trim Kit. Metal Lever Handle. FloWise Showerhead. LESS Valve Body.				
	T430.500	Valve Trim Only . Metal Lever Handle. LESS Valve Body.				

ROUGH VALVE BODIES	Product Number	Description
	R111	Rough Valve Body less trim. Universal inlets/outlets.
	R111SS	Rough Valve Body less trim. Universal inlets/outlets with Screwdriver Stops.
	R110	Rough Valve Body less trim. Direct sweat inlets/outlets.
	R110SS	Rough Valve Body less trim. Direct sweat inlets/outlets with Screwdriver Stops.
	R115	Rough Valve Body less trim. Female Thread inlets/outlets.
	R115SS	Rough Valve Body less trim. Female Thread inlets/outlets with Screwdriver Stops.
	R117	Rough Valve Body less trim. PEX inlets/universal outlets for Crimp Ring PEX system (ASTM F1807).
	R117SS	Rough Valve Body less trim. PEX inlets/universal outlets for Crimp Ring PEX system (ASTM F1807) with Screwdriver Stops.
	R118	Rough Valve Body less trim. PEX inlets/universal outlets for Cold Expansion PEX system (ASTM F1960).
	R118SS	Rough Valve Body less trim. PEX inlets/universal outlets for Cold Expansion PEX system (ASTM F1960) with Screwdriver Stops.
R119	Rough Valve Body less trim. CPVC inlets/universal outlets.	
R119SS	Rough Valve Body less trim. CPVC inlets/universal outlets with Screwdriver Stops.	

Meets the American Disabilities Act Guidelines and **ANSI A117.1** Requirements for the physically challenged.