



# FRIGIDAIRE

## Factory Parts Catalog

Product No.	FRA106CV114	FRA106CV115	FRA106CV116	FRA106CV117
Series	Compact II	Compact II	Compact II	Compact II
Color	white	white	white	white
Volts	115	115	115	115
BTU-Cooling	10000	10000	10000	10000
Owner's Guide	2020211a1827en	2020211a1827en	2020211a1827en	2020211a1827en
Installation Instructions	2020215a0474	2020215a0474	2020215a0474	2020215a0474
Market	North America	North America	North America	North America

### Frigidaire

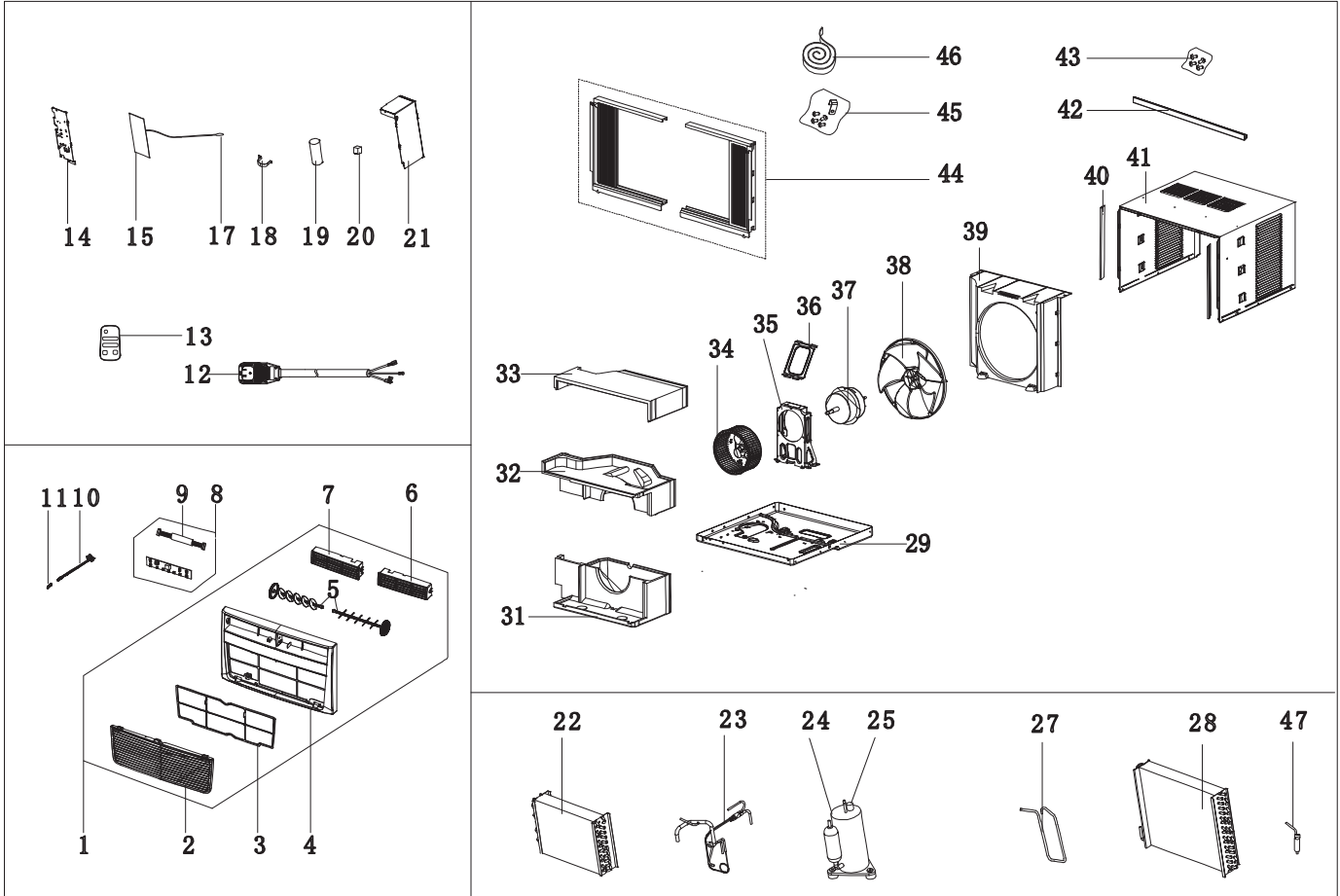
P.O. BOX 8020  
CHARLOTTE, NC 28262

### ROOM AIR CONDITIONER

Model No.  
FRA106CV1

Publication No.  
**5995615209**  
12/06/18  
(EN/SERVICE/KC)  
099

RECOMMENDED SPARE PARTS



FRA105CV110-Parts

**RECOMMENDED SPARE PARTS**

*Model Index:* A FRA106CV1 (FRA106CV114)  
 B FRA106CV1 (FRA106CV115)  
 C FRA106CV1 (FRA106CV116)  
 D FRA106CV1 (FRA106CV117)

POS. NO	PART NO.		DESCRIPTION
1 #	5304476848	A B C D	Front Assembly, complete panel
2	5304476793	A B C D	Panel, front grille, tilt-out
3 #	5304476794	A B C D	Filter, air, plastic frame
4	5304476849	A B C D	Frame, front assembly
5 #	5304476796	A B C D	Louver, vertical
6 #	5304476797	A B C D	Louver, horizontal, left
7 #	5304476798	A B C D	Louver, horizontal, right
8 #	5304476846	A B C D	PC Board, display/input
9 #	5304482356	A B C D	Wire, connecting
10 #	5304476178	A B C D	Door, vent control, with lever
11 #	5304476179	A B C D	Sleeve, vent door assy, guide
12 #	5304476180	A B C D	Power Cord, electric, LCDI
13 #	5304476851	A B C D	Remote Control, transmitter
14	5304476182	A B C D	Cover, control box
15 #	5304487534	A B C D	PC Board, main, control/power
17 #	5304476053	A B C D	Sensor, ambient temp, thermistor
18	5304471203	A B C D	Strap, capacitor clamp
19 #	5304476066	A B C D	Capacitor
20 #	5304472559	A B C D	Ionizer, anion generator
21	5304487222	A B C D	Control Box
22 #	5304485974	A B C D	Evaporator, with capillary tube
23 #	5304485965	A B C D	Tube, capillary
24 #	5304482634	A B C D	Compressor, with overload
25 #	5304482635	A B C D	Overload Protector
27 #	5304476187	A B C D	Tube, discharge
28 #	5304476233	A B C D	Condenser
29	5304485966	A B C D	Base, unit chassis
31	5304485967	A B C D	Scroll, blower housing, bottom
32	5304485968	A B C D	Scroll, blower housing, middle
33	5304485969	A B C D	Scroll, blower housing, top
34 #	5304485443	A B C D	Blower Wheel, centrifugal fan
35	5304476194	A B C D	Support, motor mount, left
36	5304476195	A B C D	Support, motor mount, right
37 #	5304485442	A B - -	Motor, fan
37 #	5304485973	- - C D	Motor, fan
38 #	5304476059	A B C D	Fan Blade, axial
39	5304487223	A B C D	Shroud, condenser fan
40	5304476197	A B C D	Retainer, shutter, cabinet sides
41	5304476198	A B C D	Cabinet, wrapper/sleeve
42	5304476843	A B C D	Rail, shutter track, top
43	5304472191	A B C D	Screw Kit, top rail mount
44	5304476200	A B C D	Window Filler Kit, slider panels, accordion
45	5304472192	A B C D	Hardware, mounting, screws/locks
46	5304472211	A B C D	Seal Kit, foam, sash filler
47 #	5304476201	A B C D	Dryer-filter

**WIRING DIAGRAM**

**MSII/COMI/COMII Electronic with Ionizer --- 202021190024**

