



Electric Drain Cleaner
Operation
Manual
1/2in. x 100ft.



HDS#125012

WARNING - Read all instructions. When using electric tools basic safety precautions should always be followed to reduce risk of fire, electric shock and personal injury.
Save These Instructions

Table of Contents

Machine and Safety Information **Page 3**

Operating Instructions **Page 4**

Machine Maintenance **Page 5**

Machine Diagram **Page 6**

Parts List **Page 7**

WORK AREA

ALWAYS keep your work area clean and well lit.

DO NOT operate power tools in the presence of flammable liquids, gases, or dust.

ALWAYS keep children and bystanders away from work area.

AVOID distractions while using the machine.

ELECTRIC SAFETY

ALWAYS plug tool into a properly installed outlet.

AVOID contact with other surfaces that could result in electronic shock.

ALWAYS use the machine in dry environment. If any moisture is present use a ground fault circuit interrupter(GFCI).

DO NOT use if cord is frayed, split, or damaged.

ALWAYS use a proper extension cord rated for outdoor use.

PERSONAL SAFETY

ALWAYS dress properly for the work being done.

ALWAYS make sure the switch is in the OFF position before plugging into an outlet.

ALWAYS adjust machine when in OFF position and unplugged.

ALWAYS maintain balance at all times to avoid injury.

DO NOT operate while fatigued or under the influence of drugs, alcohol or medication.

ALWAYS lift with your knees when moving heavy objects.

ALWAYS wear protective eyewear.

TOOL USE AND CARE

ALWAYS use the proper tool for your application.

NEVER force the tool when using.

ALWAYS make adjustments when the machine is unplugged.

ALWAYS confirm machine is not damaged and in good working order before use.

ALWAYS remove adjusting key or tools before use.

ALWAYS store tools in safe location away from children.

ALWAYS use the correct accesories and keep tool sharp for better results.

MACHINE SAFETY

ALWAYS select the right tool for the job.

DESIGNED for use in sinks, tubs, floor drains, and roof stacks.

DO NOT attempt to clear tree roots from pipes.

DO NOT modify tool, improper use could result in serious injury.

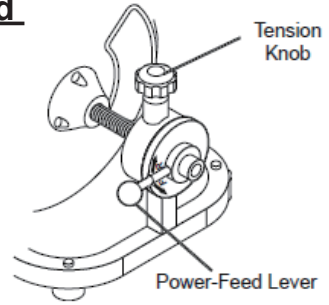
SERVICE

ALWAYS service tool by qualified service technician.

OPERATING INSTRUCTIONS - Auto feed

NOTE: Wear the following appropriate protective equipment

- **ANSI approved splash resistant safety goggles and respirator under face shield**
- **Liquid barrier gloves under heavy duty LEATHER work gloves**
- **Rubber soled, non-slip shoes to help prevent slipping and electric shock**



1. Position machine within 2 feet of drain. Position the machine so you are able to operate the foot pedal while having one hand on the cable at all time.
2. Loosen the Tension Knob, then feed at least 2 ft. of cable into the drain.
3. Tighten the Tension Knob. **Do not** over tighten.
4. Place the motor switch in the forward (FOR) position, confirm the power feed lever is in the F position.

(**DO NOT** operate the machine in the reverse (REV) position.)

5. Press the foot pedal and continue to feed the cable into the sewer outlet or drain until the blockage is reached.

NOTE: Cable may encounter blockage or become lodged.

- a. Put power feed lever to neutral position. (In between the F and R) and allow cable to work through obstruction.
- b. If cable does not pass through obstruction on its own. Release foot pedal. Put power feed lever in (R) position to pull cable back from blockage, then put power feed lever back in (F) position.
- c. Continue this process until the blockage is removed

NOTE: When working through a blockage, tool and cable can build up with debris. The cable and tool will need to be retrieved from drain to remove the debris.

6. Once the drain is cleared: Retrieve the cable by setting the power feed lever in (R) position, feed cable back into the drum.

(**NOTE: DO NOT** retrieve cable with motor switch in REV position.)

- a. While retrieving the cable, clean the cable using a hose with cold water as it is being fed back into the drum.
 - b. Retrieve cable until you can finish by pulling cable by hand. Release the foot pedal. **DO NOT** pull cable from drain while cable is rotating.
7. Place motor switch in OFF position and unplug the machine.
 8. Release Tension Knob and pull remaining cable by hand into machine.

HOW TO REMOVE DRUM FROM FRAME

Remove the belt guard

Push down on the motor housing and remove the drive belt

Pull the release hook located behind the drum upward to remove from frame

HOW TO CONNECT THE DRUM TO THE FRAME

Center the drum on the drive shaft. Pull the release hook upward and secure drum.

Push down motor housing to install belt on the pulley wheel and around the drum.

Secure belt guard.

HOW TO INSTALL REPLACEMENT CABLE

Confirm machine is unplugged and motor is turned OFF.

Remove existing cable from machine.

Disconnect cable end

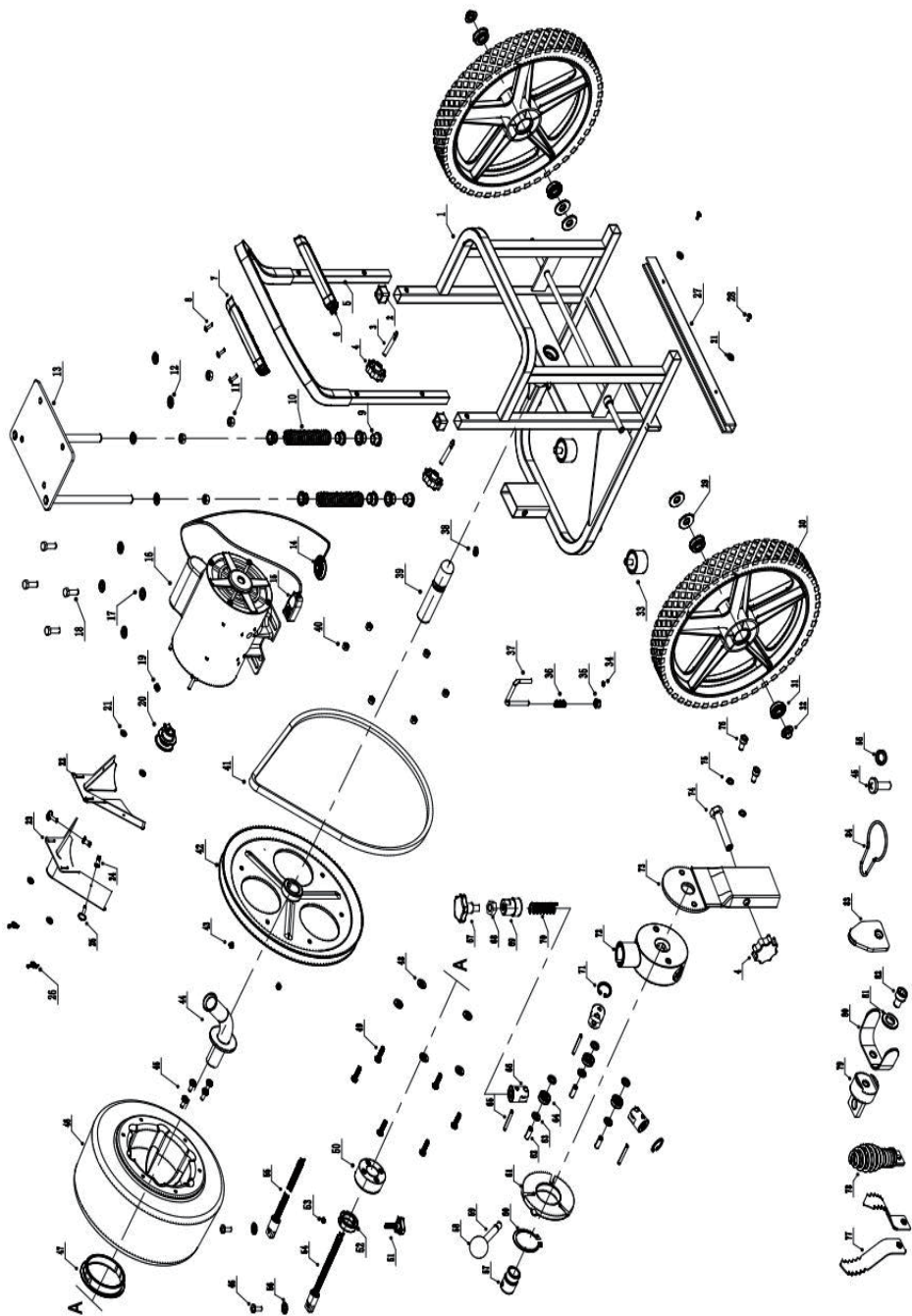
SPECIAL APPLICATIONS

Reverse Operation- Machine should only be run in reverse operations for a few minutes and only to remove when stuck.

Lubrication- Grease all exposed moving parts

Storage- Store machines in dry, safe place, out of the reach of children.

Cables- Metal cables should be thoroughly cleaned with water to prevent unpleasant odors and the damaging effect of drain cleaning solutions.



Spare Parts List

No.	Description	Q'ty		No.	Description	Q'ty
1	Frame	1		43	Screw	2
2	Guide Bushing	2		44	Guide Tube Assem.	1
3	Pin	2		45	Screw	7
4	M8 Nut	3		46	Drum	1
5	Frame-Handle	1		47	Drum Plug	1
6	Handle	1		48	Flat Washer	5
7	Handle Cover	1		49	Screw	6
8	Screw	3		50	Fixed Bushing	1
9	Motor Seat Bushing	8		51	Button	1
10	Shocking Spring	2		52	Lock Bushing	1
11	Screw	4		53	Screw	1
12	Washer	4		54	Inner Cable Assem.	1
13	Frame-Motor Seat Assem.	1		55	Cable Assem.	1
14	Foot Switch	1		56	Spring Washer	3
15	GFCI	1		57	Bit- Holder Terminal	1
16	Motor Assem.	1		58	M8 Wheel	1
17	Washer	4		59	Ball Pole	1
18	Bolt	4		60	Shaft Circlip	1
19	Screw	1		61	Guide Cover	1
20	Belt	1		62	Spring Pin1	3
21	Washer	6		63	Flat Washer	6
22	Cover Plate	1		64	Deep-Ball Bearing	3
23	Belt Guard	1		65	Spring Pin2	3
24	Pin	2		66	Guide Terminal	3
25	Cover Pin	2		67	Adjustment Wheel	1
26	Nut	2		68	Nut	1
27	U Washer	1		69	Speed-adjust Terminal	1
28	Screw	2		70	Adjustment Spring	1
29	Washer	2		71	Circlip	2
30	Wheels	2		72	Guide Seat	1
31	Bowl Bearing	4		73	Guide Connect Plate	1
32	Cap	2		74	Bolt	1
33	Rubber Foot Assem.	2		75	Spring Washer	2
34	Screw	1		76	Screw	2
35	Pin Bushing	1		77	Arrow Cutter	2
36	Pin Spring	1		78	Boring Bulb Cutter	1
37	Shaft Pin	1		79	Spade Cutter	1
38	Grease Port	1		80	C-cutter	1
39	Drum Shaft	1		81	Washer	1
40	Nut	6		82	Screw	1
41	Belt	1		83	Accessory Rotor Plate	1
42	Big Belt Wheel	1		84	Hook	1

