

**MAINTENANCE®  
WAREHOUSE**

**Electric Drain Cleaner**

# **Operation Manual**

**3/8in. x 100ft.**



**HDS#125010**

**WARNING** - Read all instructions. When using electric tools basic safety precautions should always be followed to reduce risk of fire, electric shock and personal injury.

**Save These Instructions**

# Table of Contents

**Machine and Safety Information** ..... **Page 3**

**Operating Instructions** ..... **Page 4**

**Machine Maintenance** ..... **Page 5**

**Machine Diagram** ..... **Page 6**

**Parts List** ..... **Page 7**

## **WORK AREA**

**ALWAYS** keep your work area clean and well lit.

**DO NOT** operate power tools in the presence of flammable liquids, gases, or dust.

**ALWAYS** keep children and bystanders away from work area.

**AVOID** distractions while using the machine.

## **ELECTRIC SAFETY**

**ALWAYS** plug tool into a properly installed outlet.

**AVOID** contact with other surfaces that could result in electronic shock.

**ALWAYS** use the machine in dry environment. If any moisture is present use a ground fault circuit interrupter(GFCI).

**DO NOT** use if cord is frayed, split, or damaged.

**ALWAYS** use a proper extension cord rated for outdoor use.

## **PERSONAL SAFETY**

**ALWAYS** dress properly for the work being done.

**ALWAYS** make sure the switch is in the OFF position before plugging into an outlet.

**ALWAYS** adjust machine when in OFF position and unplugged.

**ALWAYS** maintain balance at all times to avoid injury.

**DO NOT** operate while fatigued or under the influence of drugs, alcohol or medication.

**ALWAYS** lift with your knees when moving heavy objects.

**ALWAYS** wear protective eyewear.

## **TOOL USE AND CARE**

**ALWAYS** use the proper tool for your application.

**NEVER** force the tool when using.

**ALWAYS** make adjustments when the machine is unplugged.

**ALWAYS** confirm machine is not damaged and in good working order before use.

**ALWAYS** remove adjusting key or tools before use.

**ALWAYS** store tools in safe location away from children.

**ALWAYS** use the correct accesories and keep tool sharp for better results.

## **MACHINE SAFETY**

**ALWAYS** select the right tool for the job.

**DESIGNED** for use in sinks, tubs, floor drains, and roof stacks.

**DO NOT** attempt to clear tree roots from pipes.

**DO NOT** modify tool, improper use could result in serious injury.

## **SERVICE**

**ALWAYS** service tool by qualified service technician.

# OPERATING INSTRUCTIONS

**NOTE: Wear the following appropriate protective equipment**

- **ANSI approved splash resistant safety goggles and respirator under face shield**
- **Liquid barrier gloves under heavy duty LEATHER work gloves**
- **Rubber soled, non-slip shoes to help prevent slipping and electric shock**

1. Position machine within 2 feet of drain. Position the machine so you are able to operate the foot pedal while having one hand on the cable at all time.
2. Loosen thumbscrew
3. Pull the cable out of the drum and feed it into the drain. Slowly work the cable as far as it will go.
4. Attach the air foot switch to the air press box.
5. Attach the drill motor cord to the press box
6. Create a slight loop of cable between the machine and the inlet.
7. Place the drill motor switch in the forward (FOR) position and depress the foot pedal. **DO NOT** operate the machine in the reverse (REV) position.
8. Continue to push the cable into the sewer outlet or drain until the blockage is reached.

**NOTE:** Cable may encounter change in drain line or build up of mud or grease. To clear the obstruction, gradually move the cable back and forth. If the cable doesn't move then release the foot switch and give a hard push to try and get past.

9. Cable will start to wind up or twist when the blockage is reached. When this happens, do the following:
  - a. Put power level to neutral position
  - b. Release tension and slightly pull back on the cable to get tool turning again
  - c. Slowly feed tool back into the blockage
  - d. Continue to process until the blockage is removed
10. To retrieve the cable, feed it back into the drum by first stopping the machine. then retrieve the cable by feeding the cable back into the drum. Clean the cable with cold water as it is being fed back into the drum
11. Tighten the thumbscrew to avoid the cable becoming loose.

## **HOW TO REMOVE DRUM FROM FRAME**

Remove the belt guard

Push down on the motor housing and remove the drive belt

Pull the release hook located behind the drum upward to remove from frame

## **HOW TO CONNECT THE DRUM TO THE FRAME**

Center the drum on the drive shaft. Pull the release hook upward and secure drum.

Push down motor housing to install belt on the pulley wheel and around the drum.

Secure belt guard.

## **HOW TO INSTALL REPLACEMENT CABLE**

Confirm machine is unplugged and motor is turned OFF.

Remove existing cable from machine.

Disconnect cable end

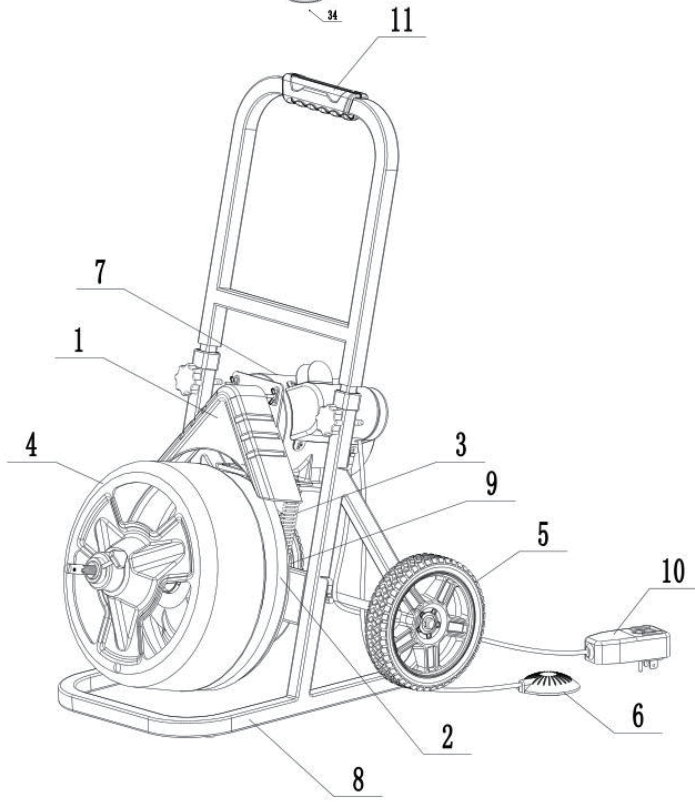
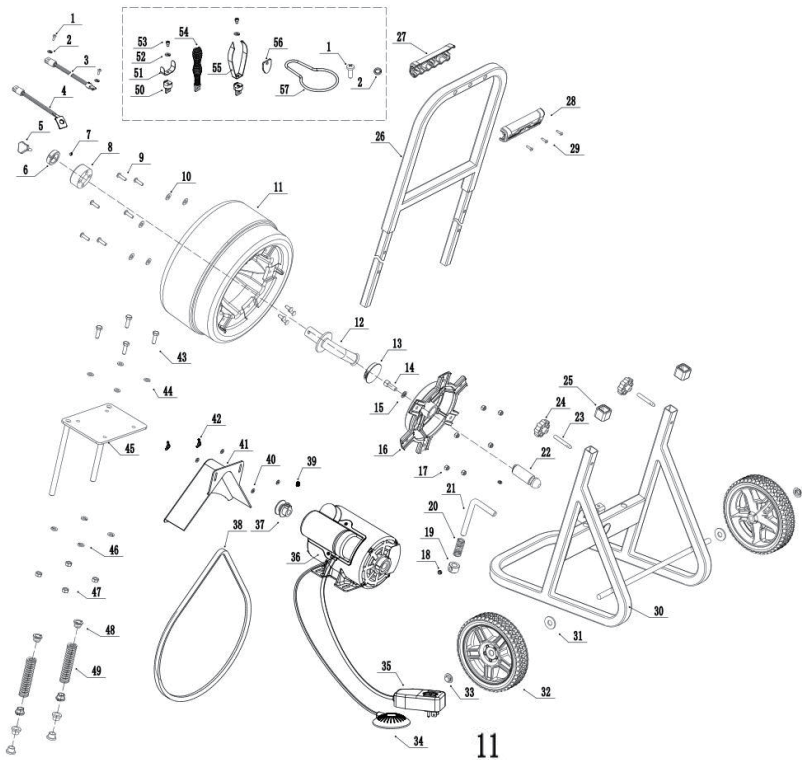
## **SPECIAL APPLICATIONS**

**Reverse Operation-** Machine should only be run in reverse operations for a few minutes and only to remove when stuck.

**Lubrication-** Grease all exposed moving parts

**Storage-** Store machines in dry, safe place, out of the reach of children.

**Cables-** Metal cables should be thoroughly cleaned with water to prevent unpleasant odors and the damaging effect of drain cleaning solutions.



Spare Parts List

1	Screw	7
2	Spring Washer	3
3	Out Cable Assem.	1
4	Inner Cable Assem.	1
5	Button	1
6	Lock Bushing	1
7	Screw	1
8	Fixed Bushing	1
9	Screw	6
10	Flat Washer	5
11	Drum	1
12	Guide Tube Assem.	1
13	Drum Plug	1
14	Screw	1
15	Spring Washer	1
16	Alu. Plate	1
17	Lock Nut	6
18	Screw	1
19	Lock Pin Tube	1
20	Lock Pin Spring	1
21	Shaft Lock Pin	1
22	Drum Shaft	1
23	Lock Pin	2
24	M8 Nut	2
25	Guide Bushing	2
26	Frame Handle Assem.	1
27	Handle	1
28	Handle Cover	1
29	Screw	3

30	Frame Assem.	1
31	Flat Washer	2
32	Wheel	2
33	Cap	2
34	Foot Air Switch	1
35	GFCI	1
36	Motor	1
37	Belt Wheel	1
38	Belt	1
39	Screw	1
40	Flat Washer	4
41	Belt Guard	1
42	Butterfly Nut	2
43	Screw	4
44	Flat Washer	4
45	Frame-motor seat Assem.	1
46	Spring Washer	4
47	Nut	4
48	Motor Seated Tube	8
49	Shocking Spring	2
50	Side Cutter Connector	2
51	C-cutter	1
52	Flat Washer	2
53	Screw	2
54	Boring Bulb Cutter	1
55	Side Cutter	1
56	Spade Cutter	1
57	Hook	1

