

PRODUCT FEATURES:

Flexible Selectronic Platform with programmable, multi-function sensor.

Easy & Flexible Installation: 3-hole, 4" centerset installation. Water resistant solenoid enclosure mounts to wall.

Hygienic, touch-free operation

Durable Vandal-Resistant Brass Body: Ideal for high-use commercial applications.

Self-Cleaning Solenoid Valve: Wiper spring prevents clogging

Easy to Service Integrated Strainer: Patented integrated strainer protects solenoid from debris. Strainer is enclosed in removable debris cup for easy service.

Optional Auto Purge Feature: Faucet can be programmed to open at a pre-determined time after the last use to purge the faucet and water lines of stagnant water.

Safety Timer: Helps prevent vandalism by turning off the faucet if the sensor is covered for more than 1 minute. Timing is adjustable with optional remote control.

Adjustable Range: Detection zone can be adjusted manually or with optional remote control.

Fail-Safe: Faucet automatically shuts off upon loss of power or dead battery. Prevents costly excess water usage and potential flooding.

Low Lead: Faucet contains $\leq 0.25\%$ total lead content by weighted average.

GENERAL DESCRIPTION:

Electronic faucet with proximity operation. 4" centerset with vandal-resistant solid brass construction. Water pressure range from 20 to 125 psi. Single inlet. 18" flexible inlet hose with 3/8" compression fitting for connection to control box.

MODEL NUMBER:



■ **PWRX™ 10 YEAR BATTERY POWERED**

- 6053.205** 0.5 gpm/1.9 L/min pressure compensating, vandal-resistant multi-laminar spray.
- 6053.204** 0.35 gpm/1.3 L/min pressure compensating, vandal-resistant multi-laminar spray. Faucet is factory set for 7.5 second running time to deliver 0.044 gpc/0.17 L per cycle.
- 6053.202** 1.5 gpm/5.7 L/min pressure compensating, vandal-resistant aerator.



■ **DC (CR-P2 LITHIUM BATTERY) POWERED**

- 6055.205** 0.5 gpm/1.9 L/min pressure compensating, vandal-resistant multi-laminar spray.
- 6055.204** 0.35 gpm/1.3 L/min pressure compensating, vandal-resistant multi-laminar spray. Faucet is factory set for 7.5 second running time to deliver 0.044 g/0.17 L per cycle.
- 6055.202** 1.5 gpm/5.7 L/min pressure compensating, vandal-resistant aerator.



■ **OPTIONAL Mixing Valve**

- 605XTMV1070** Thermostatic mixing valve. 20" flexible inlet hoses with 3/8" compression fittings. ASSE 1070 certified down to 0.35 gpm/1.3 L/min.

■ **OPTIONAL Remote Control**

- 605XRCT** Adjusts setup parameters and allows for customization of functions. Can be used to program all Selectronic faucets and flush valves.

POWER OPTIONS:

- **PWRX 10 Year Battery System:** Battery Life - 480,000 cycles (10 years @ 4,000 cycles per month). Advanced battery & electronics reduce the downtime and maintenance costs associated with changing batteries. Safety Circuitry prevents overheating in case of short circuit and protects the electronics from damage.
- **DC (Battery):** Includes CR-P2 lithium battery. Battery Life - 192,000 cycles (4 years @ 4,000 cycles per month).

RECOMMENDED SPECIFICATION:

Electronic, sensor-operated lavatory faucet shall feature a programmable, multi-function sensor and an electronically operated self-cleaning solenoid valve. Shall also feature a vandal resistant solid brass construction with single inlet and in-line strainer. Shall meet ANSI A112.18.1 and ANSI 117.1 codes. Fitting shall be American Standard Model # 605B__20__.

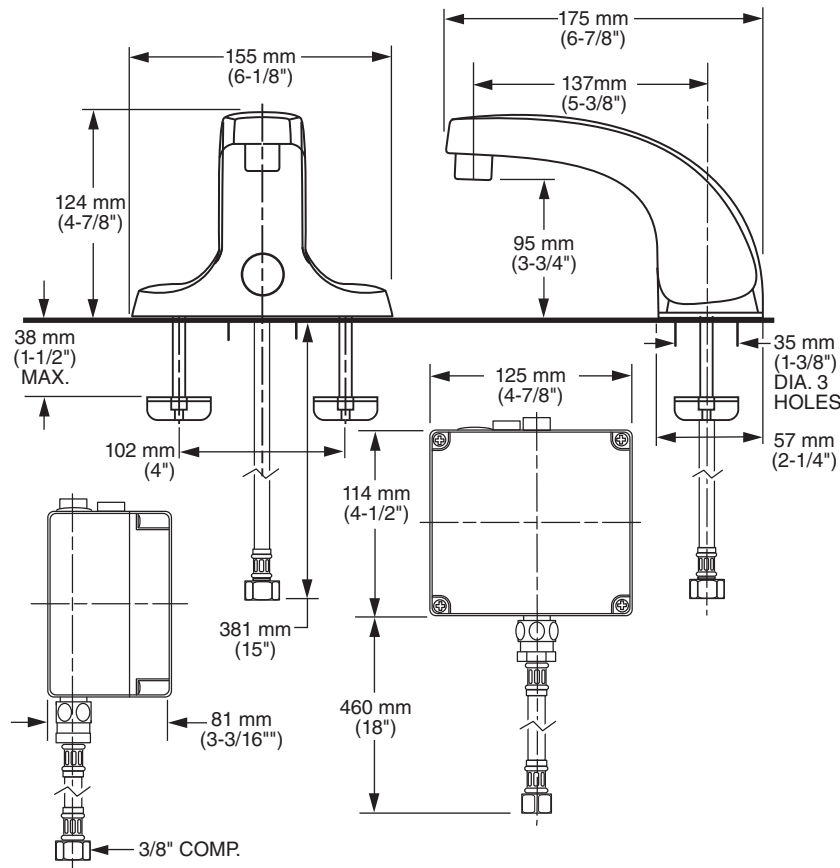
CODES AND STANDARDS

These products meet or exceed the following codes and standards:

- ANSI A117.1**
- ASME A112.18.1**
- CSA B125.1**
- NSF 372**

| Other Aerators Available: | |
|----------------------------------|--|
| Part Suffix | Description |
| LV15 | 1.5 gpm/5.7 L/min PCA Vandal-Resistant Non-Aerated Laminar Flow Outlet |
| LV10 | 1.0 gpm/3.8 L/min PCA Vandal-Resistant Non-Aerated Laminar Flow Outlet |
| V10 | 1.0 gpm/3.8 L/min PCA Vandal-Resistant Aerator |
| V035* | 0.35 gpm/1.3 L/min PCA Vandal-Resistant Multi-Laminar Spray |

PCA - Pressure Compensating
 * Meets Cal Green Code



ADA Meets the American Disabilities Act Guidelines and **ANSI A117.1** Requirements for accessible and usable building facilities - check local codes

PART OF LIXIL